



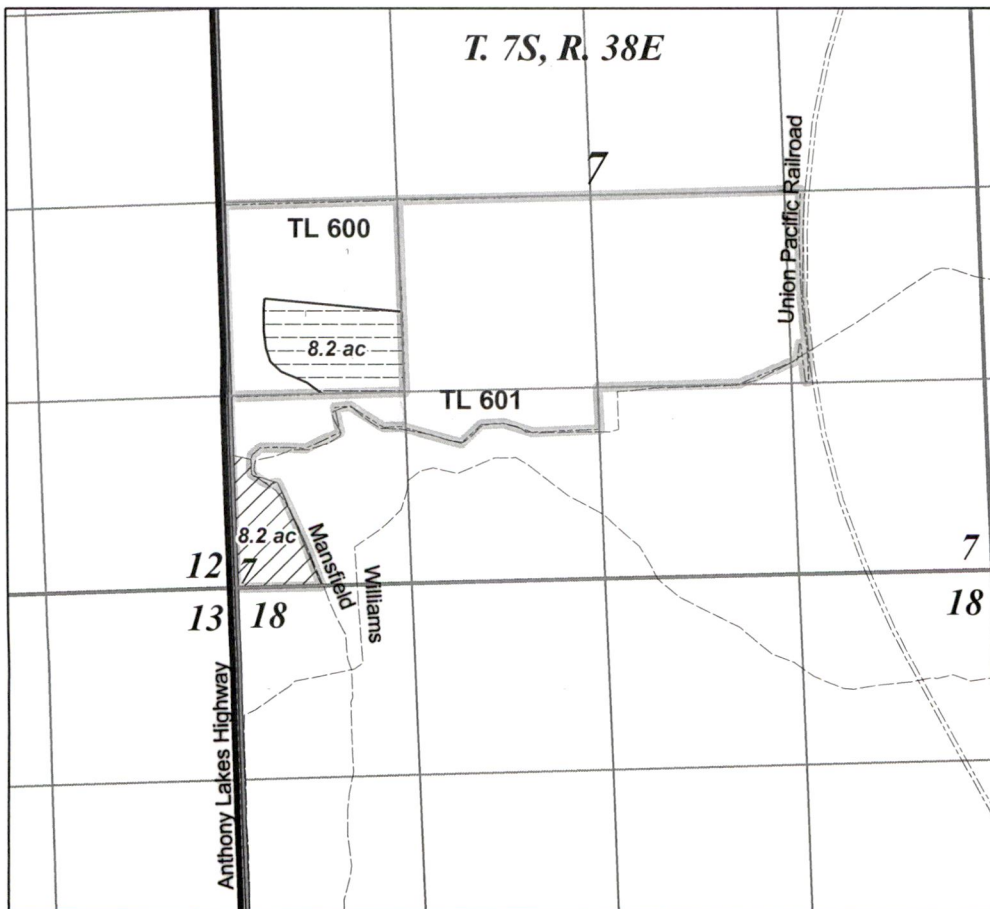
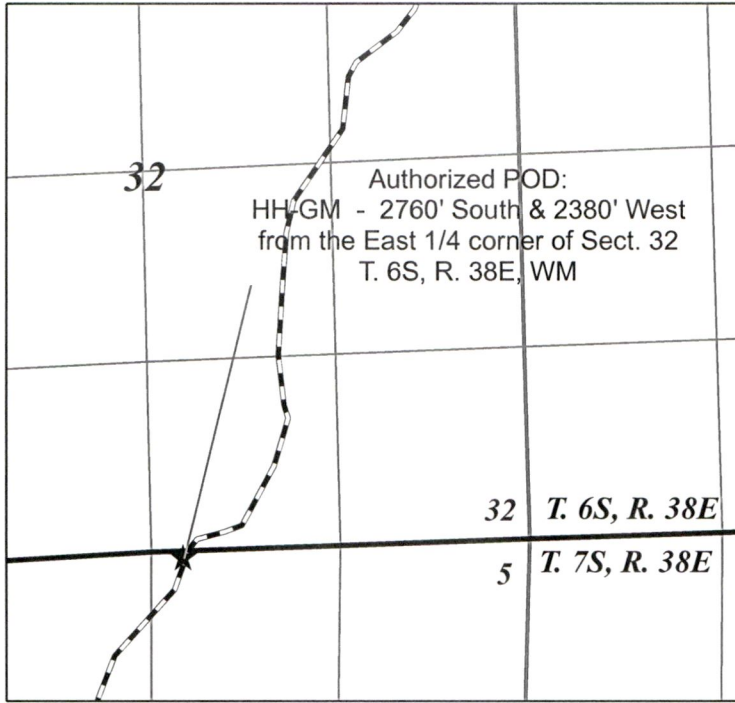
**Map to Accompany a
Place of Use Change
for
Sexton Land LLC**


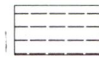


Scale: 1" = 1320'

RECEIVED

JAN 23 2019

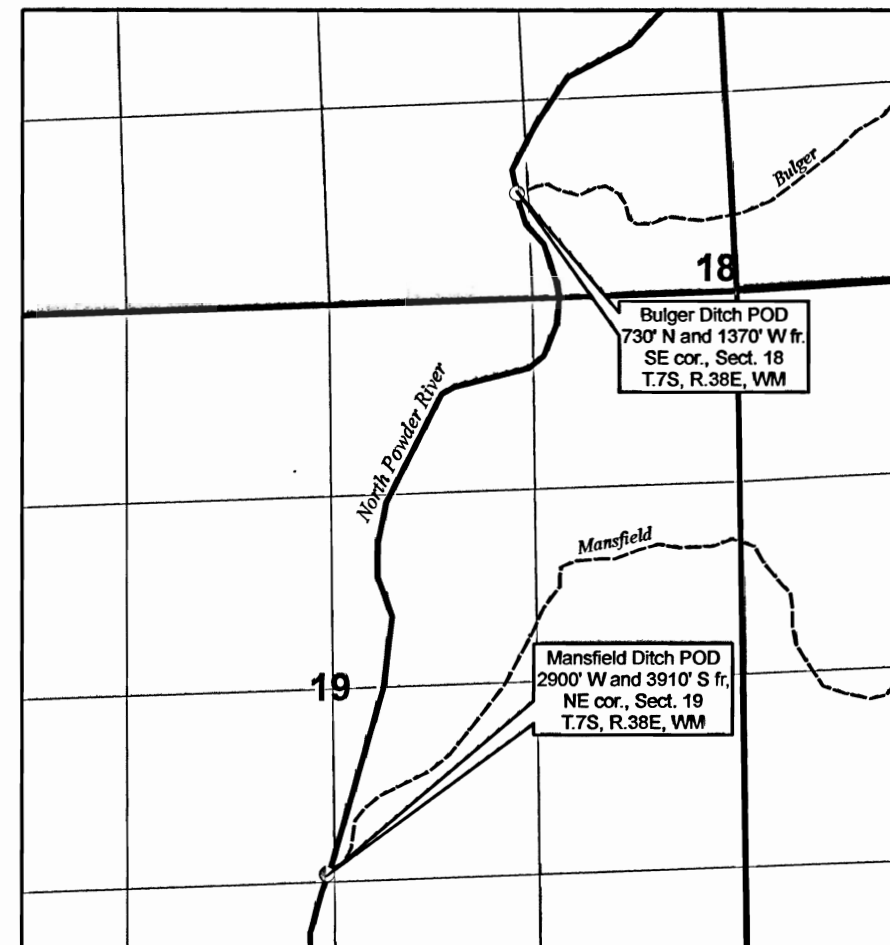
OWRD



-  C-83738
"FROM" - 1873 8.2 ac
"TO" - 1895 8.2 ac
-  C-83738
"FROM" - 1895 8.2 ac
"TO" - 1873 8.2 ac
-  Taxlots
-  Authorized POD

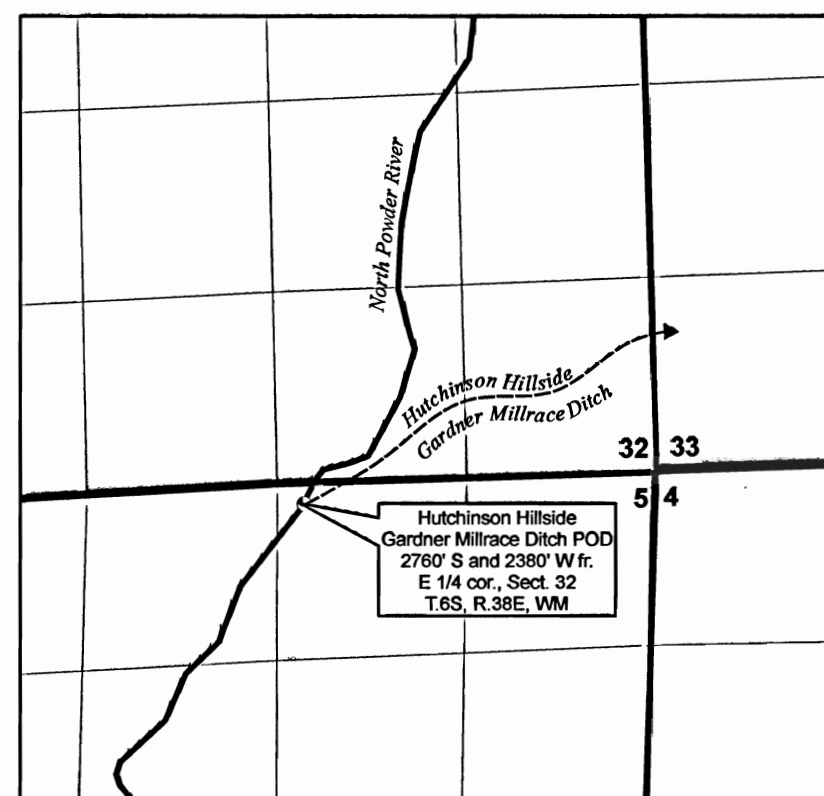
13111

T. 7S, R. 39E, WM



AUTHORIZED POINTS OF DIVERSION FOR BULGER DITCH AND MANSFIELD DITCH

T. 6S, R. 38E, WM



T. 7S, R. 38E, WM
AUTHORIZED POINT OF DIVERSION FOR HUTCHINSON HILLSIDE GARDNER MILLRACE DITCH

NOTE: All lands in Sec. 17, 18 and 8.6 acres lying East of U.P.R.R. in the NE 1/4 NE 1/4 of Sec. 7 are irrigated from the Mansfield and Bulger ditch systems.

Lands in Sec. 7 lying South and East of the Mansfield Ditch are irrigated from the Mansfield-Bulger ditch system.

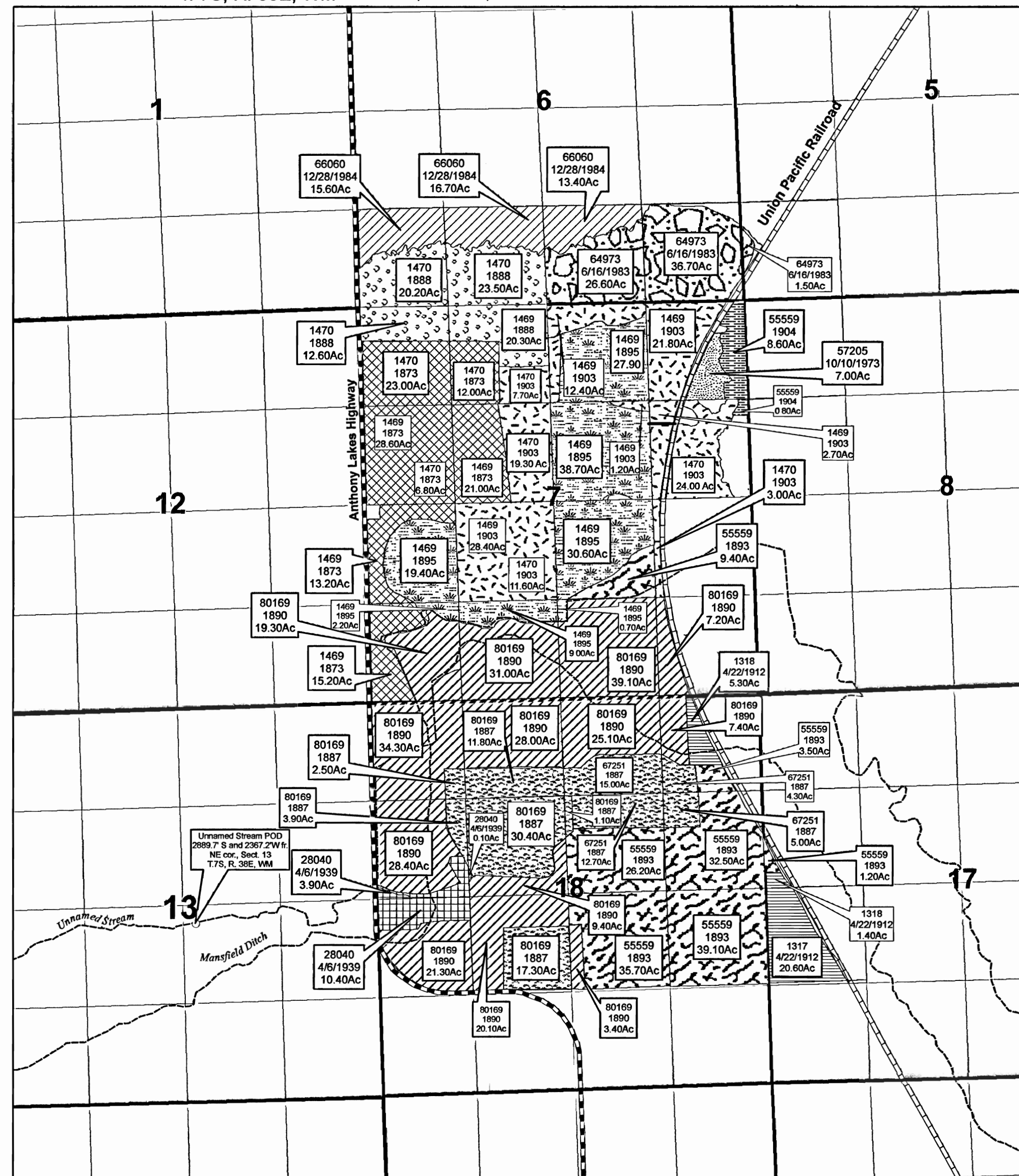
The lands to the West and North of the Mansfield Ditch in Sec. 5, 6, and 7 are irrigated from the Hillside Ditch System.

SEXTON (SCHOENINGH) HB-3111 PETITION MAP POWDER VALLEY WATER CONTROL DISTRICT

RECEIVED
FEB 22 2008
WATER RESOURCES DEPT
SALEM, OREGON

REVISED 2-5-2008

T. 7S, R. 38E, WM T. 7S, R. 39E, WM



SCALE: 1" = 1320'

NOTE: There are supplemental water rights, not petitioned, relating to all of the mapped property as shown. These rights are to remain in place as they were prior to petitioning. Do not cancel.

SUPPLEMENTAL CERTIFICATES