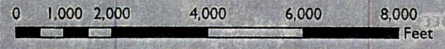
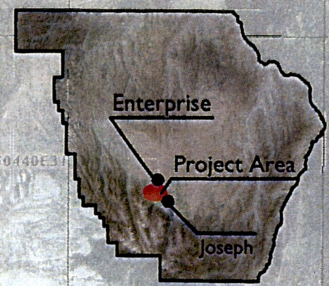


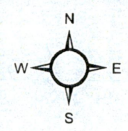
Legend



- Proposed Powerhouse
- Point of Diversion (POD)
- Pipeline Intake
- Existing Pipeline
- Project Area Property Boundaries
- Section Lines



POD
 LAT/LONG -117.292 45.338
 NW 1/4, NW 1/4, SEC 2, T3S, R44E



REVISION	BY	DATE
DESIGNED BY	K. PETROCINE	
DRAWN BY	T. PORTER	
REVIEWED BY		

SCALE IS ACCURATE WHEN PRINTED ON 11X17	
HORIZ. SCALE	VERT. SCALE
1" = 2500'	
JOB NUMBER	DATE
ACAD FILE	2018

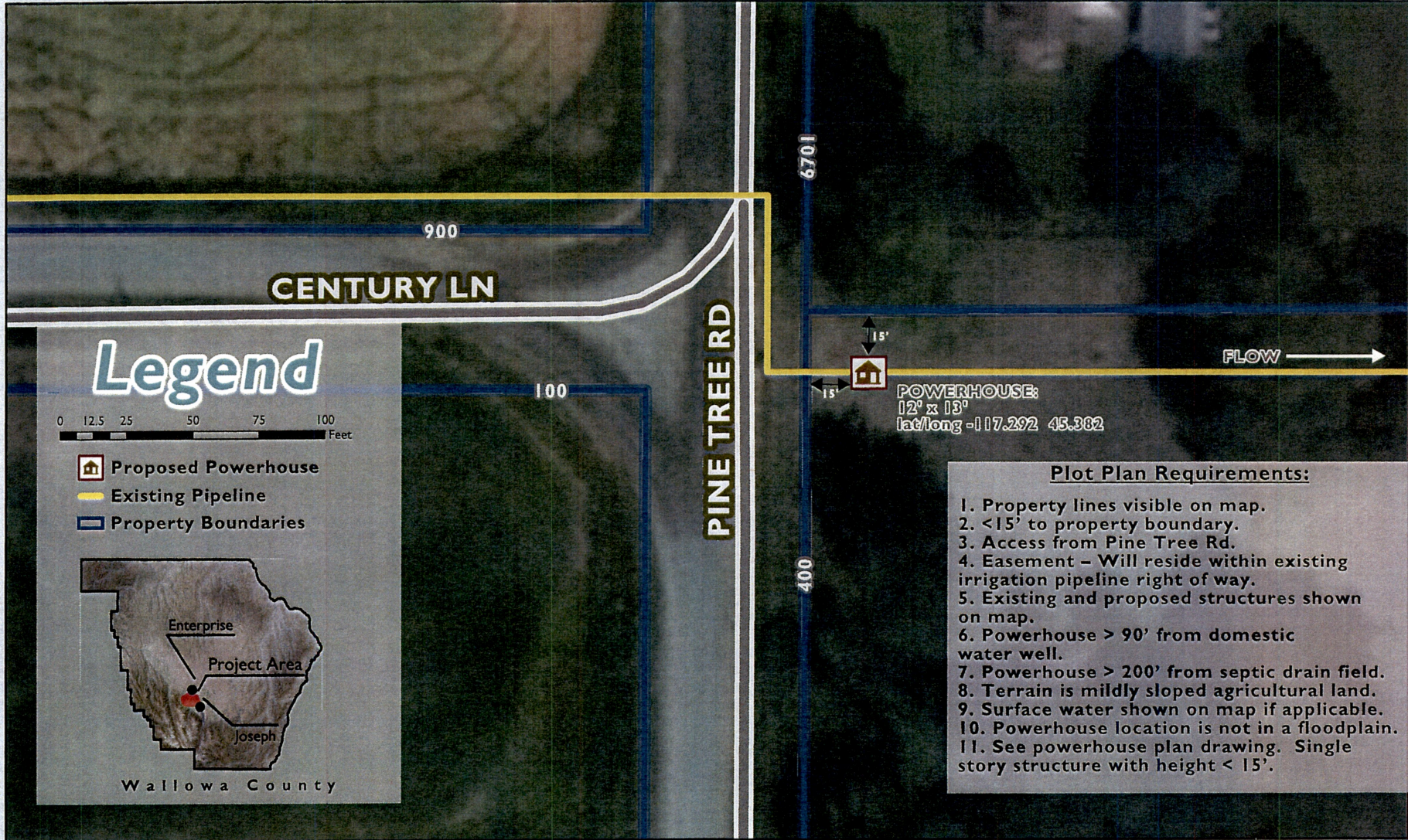
--

WALLOWA RESOURCES
 COMMUNITY SOLUTIONS, INC.
 ENTERPRISE, OR

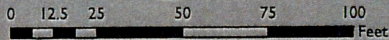
Arrowhead Pipeline Hydro
 2018
 Project Map

SHEET
1

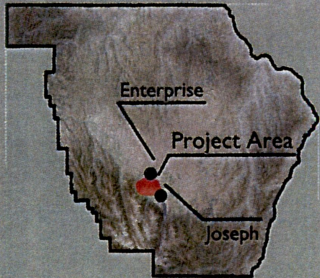
OWRD



Legend



- Proposed Powerhouse
- Existing Pipeline
- Property Boundaries

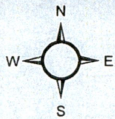


Wallowa County

POWERHOUSE:
 12' x 13'
 lat/long -117.292 45.382

Plot Plan Requirements:

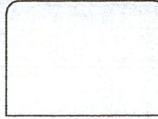
1. Property lines visible on map.
2. <15' to property boundary.
3. Access from Pine Tree Rd.
4. Easement - Will reside within existing irrigation pipeline right of way.
5. Existing and proposed structures shown on map.
6. Powerhouse > 90' from domestic water well.
7. Powerhouse > 200' from septic drain field.
8. Terrain is mildly sloped agricultural land.
9. Surface water shown on map if applicable.
10. Powerhouse location is not in a floodplain.
11. See powerhouse plan drawing. Single story structure with height < 15'.



REVISION	BY	DATE
DESIGNED BY K. PETROCCINI		
DRAWN BY T. PORTER		
REVIEWED BY		

SCALE IS ACCURATE WHEN PRINTED ON E11X17

HORIZ. SCALE 1" = 35'	VERT. SCALE DATE 2018
JOB NUMBER	
ACAD FILE	



WALLOWA RESOURCES
COMPLIANCE SOLUTIONS, INC.
ENTERPRISE, OR

Arrowhead Pipeline Hydro
2018
Hydro Site Plan

SHEET
2