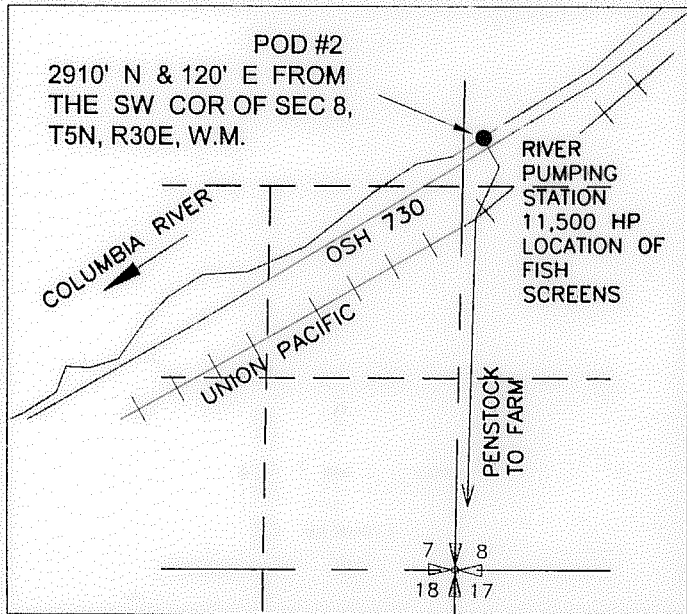
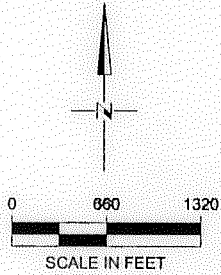


CLAIM OF BENEFICIAL USE MAP FOR TRANSFER T 11770
 IN THE NAME OF STANFIELD HUTTERIAN BRETHERN
 T4N, R26E, W.M., MORROW COUNTY & T4N, R30E, W.M., UMATILLA COUNTY

950

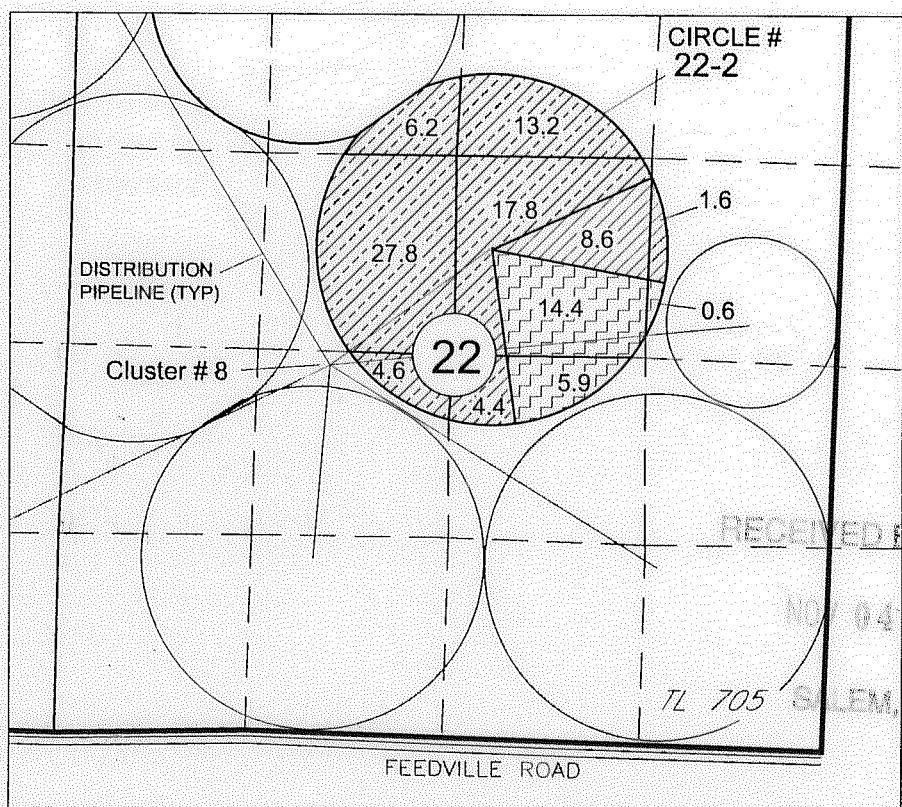
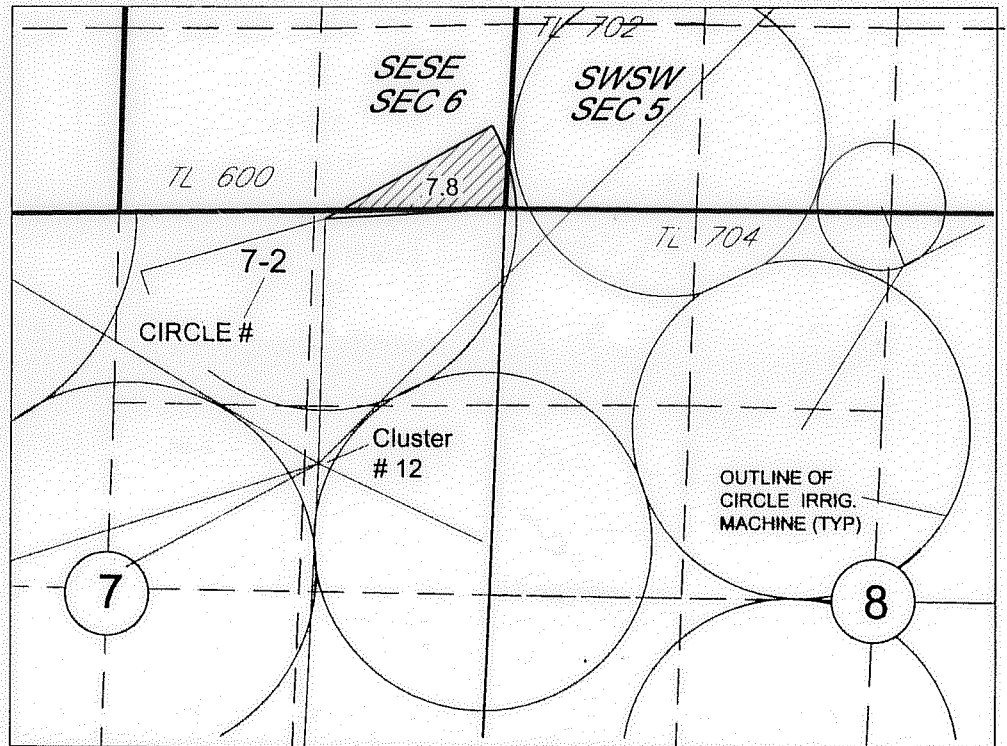
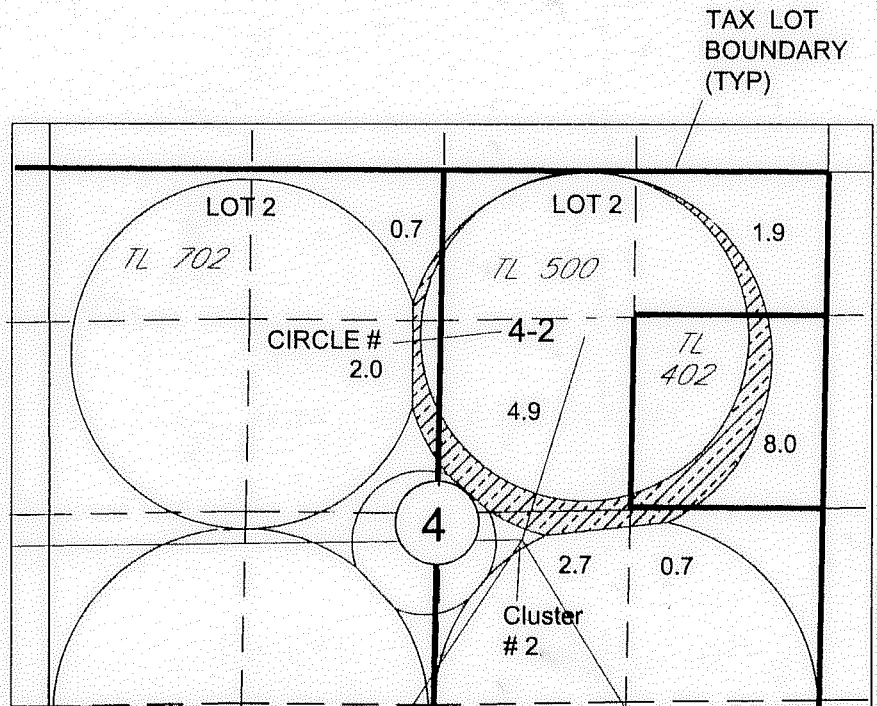
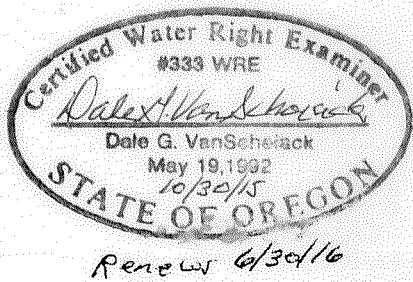
SHEET 2 OF 2
 (UMATILLA CO.)



LOCATION OF POINT OF DIVERSION

LEGEND

-  AREA IRRIGATED ASSOCIATED WITH ORIGINATING CERT 52222
20.9 AC
-  AREA IRRIGATED ASSOCIATED WITH ORIGINATING CERT 87073
94.9 AC
-  AREA IRRIGATED ASSOCIATED WITH ORIGINATING CERT 56158
18.0 AC



RECEIVED BY OWRD
 NOV 04 2015
 SALEM, OR

NOTE:
 THE PURPOSE OF THIS MAP IS TO IDENTIFY THE APPROXIMATE LOCATION OF THE WATER RIGHT. IT IS NOT INTENDED TO PROVIDE INFORMATION RELATIVE TO THE LOCATION OF PROPERTY OWNERSHIP BOUNDARY LINES. THE CIRCLE LAYOUT AND PIPE DISTRIBUTION SYSTEM ARE BASED ON FARM MAPS, FIELD OBSERVATIONS AND DESCRIPTIONS PROVIDED BY THE OWNER.