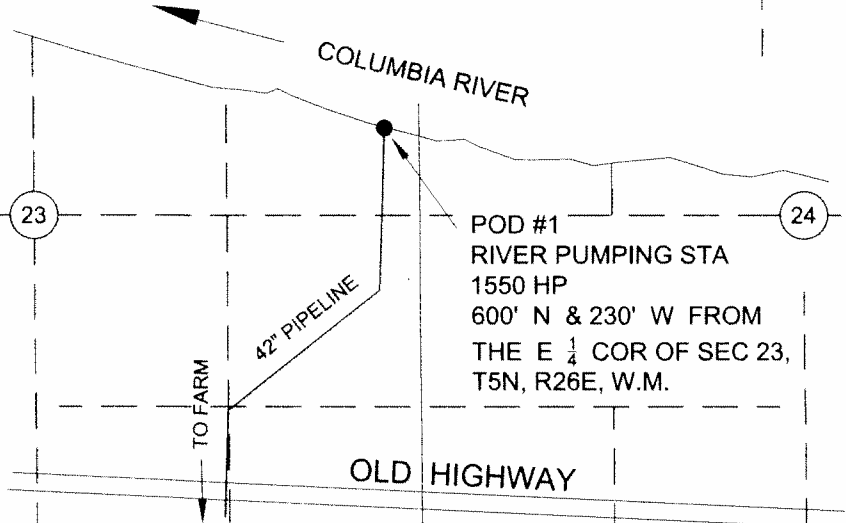
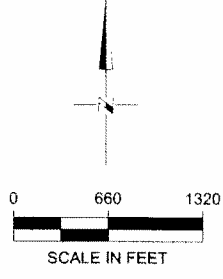
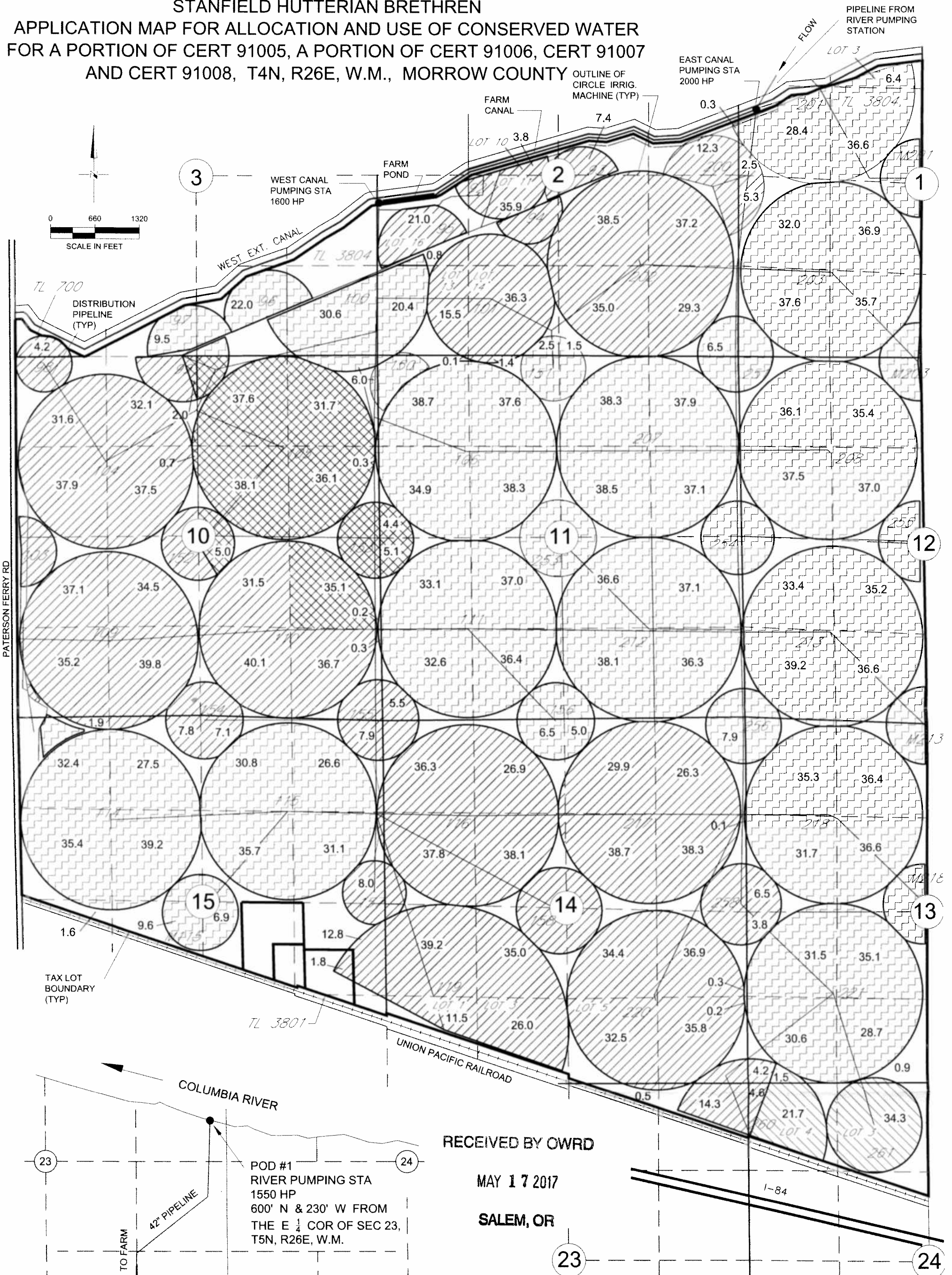
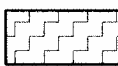





EXHIBIT B
STANFIELD HUTTERIAN BRETHERN
APPLICATION MAP FOR ALLOCATION AND USE OF CONSERVED WATER
FOR A PORTION OF CERT 91005, A PORTION OF CERT 91006, CERT 91007
AND CERT 91008, T4N, R26E, W.M., MORROW COUNTY



RECEIVED BY OWRD
MAY 17 2017
SALEM, OR

LEGEND

- | | | | |
|--|--|---|---|
|  | AREA IRRIGATED ASSOCIATED WITH CERT 91005
1756.1 AC |  | AREA IRRIGATED ASSOCIATED WITH CERT 91007
195.8 AC |
|  | AREA IRRIGATED ASSOCIATED WITH CERT 91006
1290.0 AC |  | AREA IRRIGATED ASSOCIATED WITH CERT 91008
58.4 AC |

NOTE: THE PURPOSE OF THIS MAP IS TO IDENTIFY THE APPROXIMATE LOCATION OF THE WATER RIGHT. IT IS NOT INTENDED TO PROVIDE INFORMATION RELATIVE TO THE LOCATION OF PROPERTY OWNERSHIP BOUNDARY LINES. THE CIRCLE LAYOUT AND PIPE DISTRIBUTION SYSTEM ARE BASED ON FARM MAPS, FIELD OBSERVATIONS AND DESCRIPTIONS PROVIDED BY THE OWNER.

261 CIRCLE # (TYPICAL)