

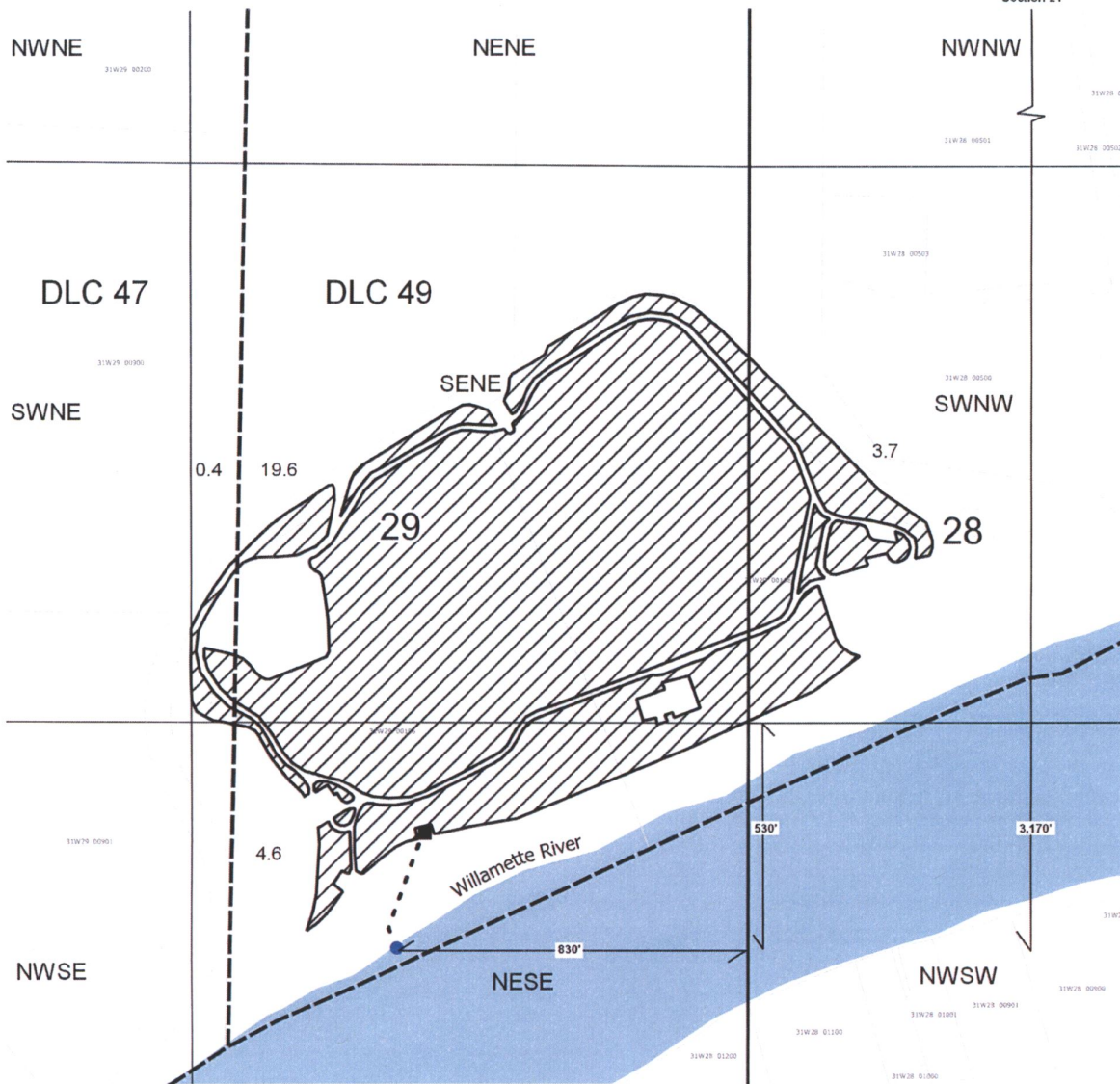
T3S, R1W WM, Section 28 & 29  
 Clackamas County, Oregon  
 Application S-84039 Permit S-53642

RECEIVED

JAN 23 2020

OWRD

SW Corner  
 Section 21



Point of Diversion is located 530' S and 830' W from the W 1/4 Corner of Section 28 (or as 3,170' S and 830' W of SW Corner of Section 21)

**Explanation**

- Point of Diversion (Hunter Creek Farms) with Pump / Fish Screen
- - - Mainline to Place of Use
- Irrigation House with Meter
- ▨ Irrigation (28.3 Acres)
- 0.2000 Tax Lots
- Roads
- Streams

0 100 200 300 400 ft



1 inch = 400 feet

NAD 1983 HARN  
 Datum of 1983  
 Prepared January 21, 2020

Sources: BLM CadNDSI PLSS, roads, county lines & tax lots (Metro RLIS), Oregon Spatial Data Library water features, DLC lines, et al.

This map was prepared for the purpose of identifying the location of a water right only and is not intended to provide legal dimensions or locations of a property.