

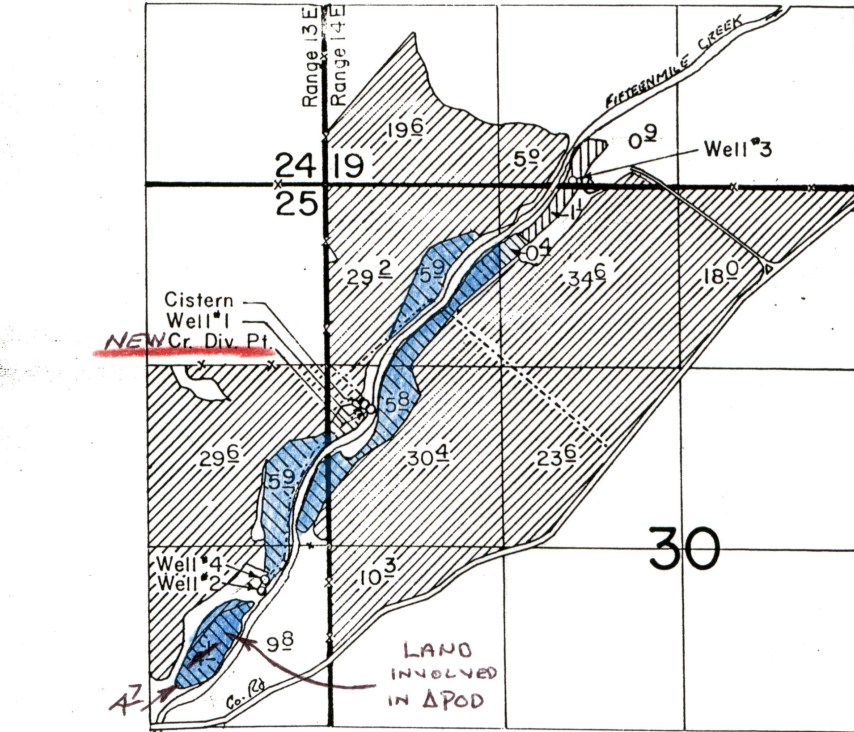
T-5894

T.1S., R.13&14E., W.M.




RECEIVED

JAN 2 1987

WATER RESOURCES DEPT.
SALEM, OREGON



Well #1 (App. G-8440) Loc. 1030' N. & 280' E.
 Well #2 (App. G-9193) Loc. 330' S. & 500' W.
 Well #3 (App. G-9476) Loc. 2650' N. & 1810' E.
 Well #4 (App. G-10018) Loc. 230' S. & 470' W.
 Creek Div. (App. 59516) Loc. 980' N. & 310' E.
 All Measurements are from the W1/4 Cor. Sec. 30

-  Primary Well #1 (App. G-8440)
Supplemental Well #2 (App G-9193), Well #4 (App. G-10018) & Creek (App. 59516)
-  Supplemental Well #1 (App. G-8440), Well #2 (App. G-9193), & Well #4 (App. G-10018)
-  Supplemental Well #3 (App. G-9476)

~~FINAL PROOF SURVEY~~

UNDER	
59516	44816
G-8440	G-7869
G-9193	G-8673
G-9476	G-8835

Application No. ~~G-10018~~ Permit No. ~~G-9552~~
IN NAME OF

.....WILBUR J. PETERSEN.....

Surveyed Oct. 25, 1982, by T. J. Paul.....