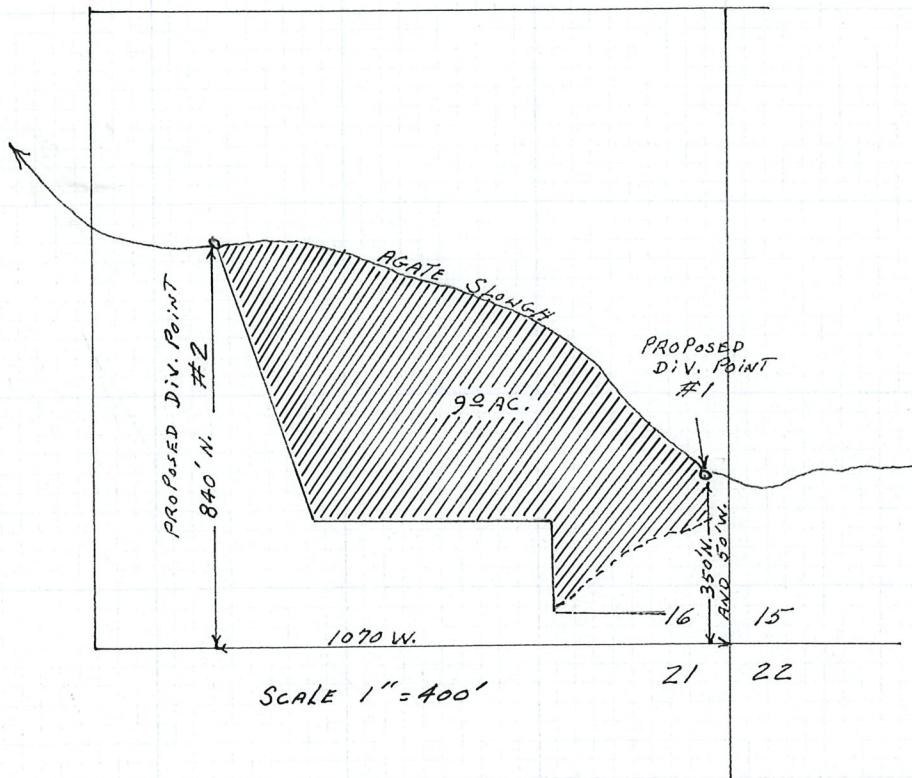
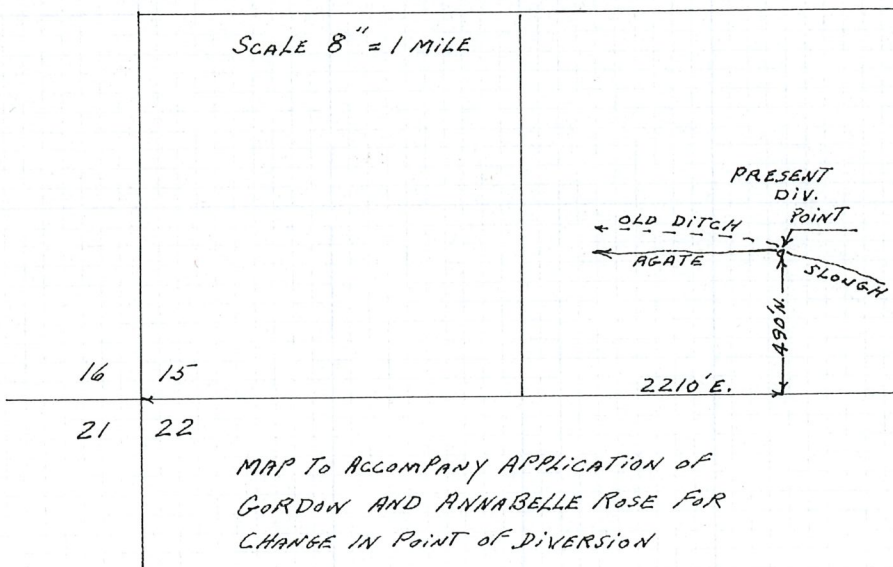




T.36S. R.2W. W. M.

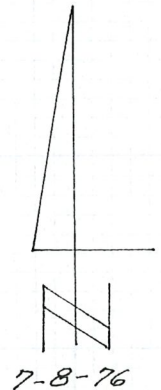


T.36S. R.2W. W. M.



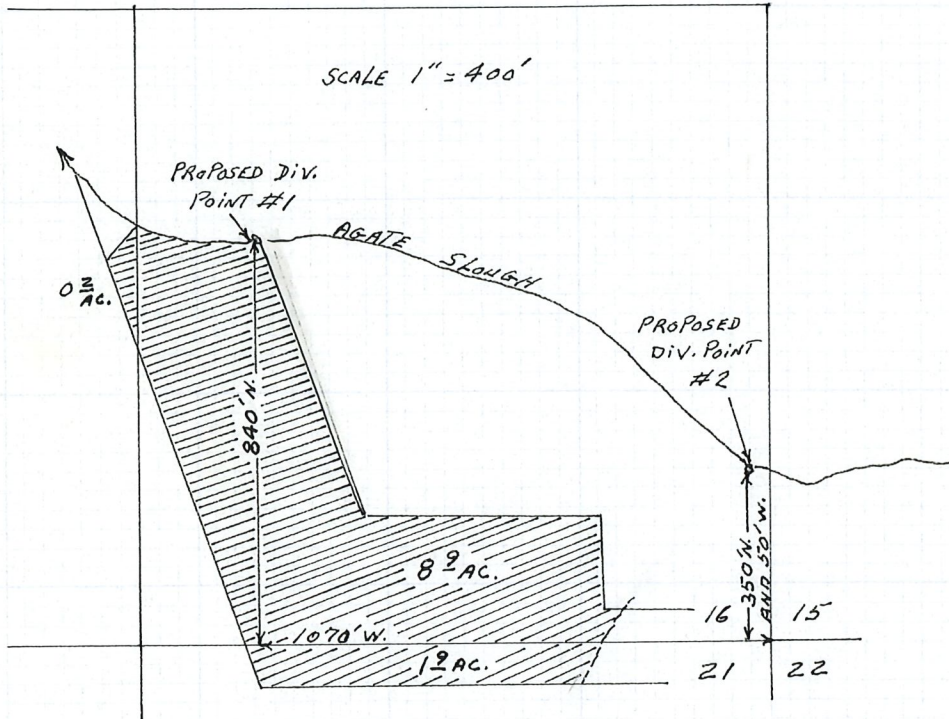
MAP TO ACCOMPANY APPLICATION OF GORDON AND ANNABELLE ROSE FOR CHANGE IN POINT OF DIVERSION

RECEIVED JUL 13 1976 WATER RESOURCES DEPT SALEM, OREGON

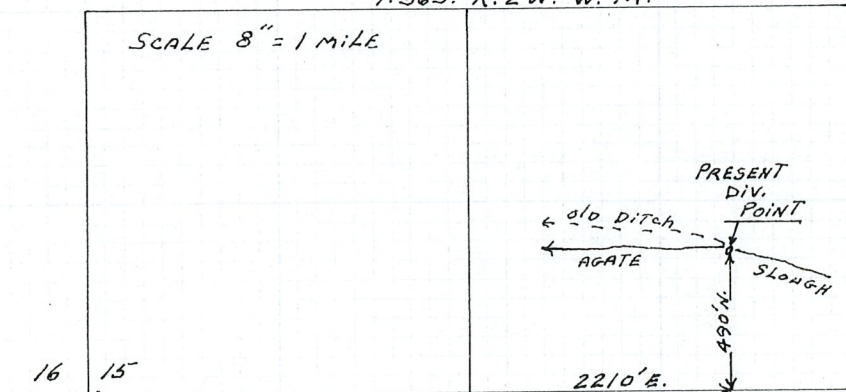




T.36S. R.2W. W.M.



T.36S. R.2W. W.M.

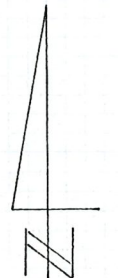


MAP TO ACCOMPANY APPLICATION OF  
HENRY L. AND FAE L. MORSS FOR  
CHANGE IN POINT OF DIVERSION

RECEIVED

JUL 13 1976

WATER RESOURCES DEPT  
SALEM, OREGON



7-8-76