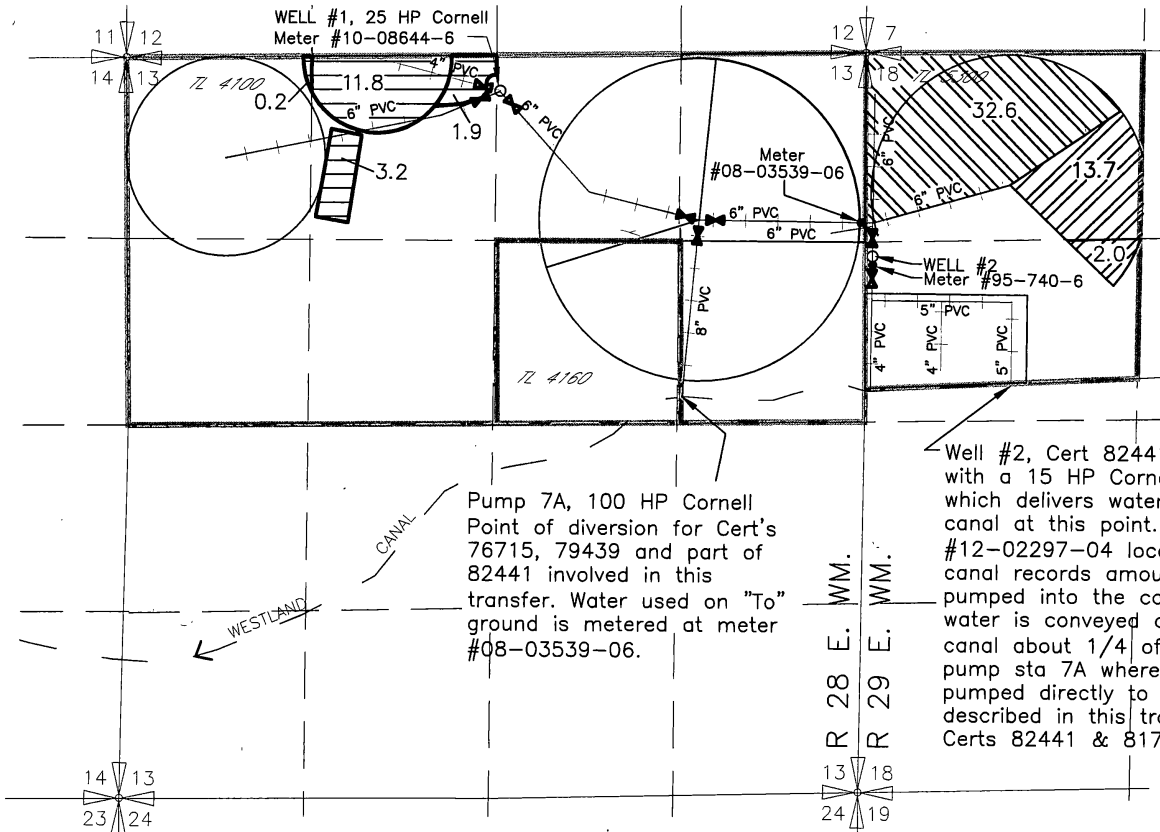


AMENDED CLAIM OF BENEFICIAL USE MAP WESTLAND IRRIGATION DISTRICT DOUBLE M RANCH, INC - TRANSFER T-11328 CERT'S 76715, 79439, 82441 AND 81752 T3N, R 28 & 29 E, W.M.



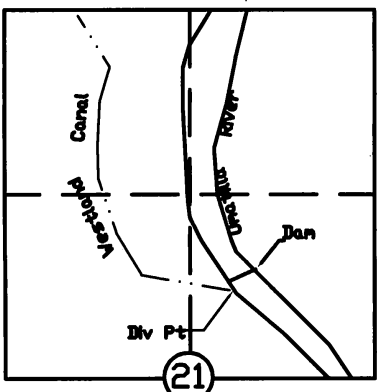
Pump 7A, 100 HP Cornell
Point of diversion for Cert's
76715, 79439 and part of
82441 involved in this
transfer. Water used on "To"
ground is metered at meter
#08-03539-06.

Well #2, Cert 82441 is equipped
with a 15 HP Cornell pump
which delivers water to the WID
canal at this point. Flow meter
#12-02297-04 located at the
canal records amount of water
pumped into the canal. This
water is conveyed down the
canal about 1/4 of a mile to
pump sta 7A where it is
pumped directly to areas
described in this transfer for
Certs 82441 & 81752.

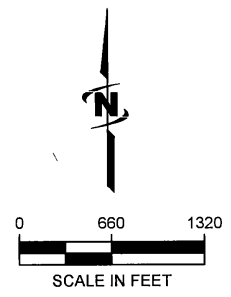
WELL #1 Located 270' South & 2540' West from
the NE corner section 13, T3N, R28E, WM

WELL #2 Located 1450' South & 3160' West from
the N 1/4 corner section 18, T3N, R29E, WM
T3N., R 29E., W.M.

- 15.7 ac Primary Cert. 76715 & Supplemental Cert. 79439
- 32.6 ac Cert 82441
- 17.1 ac Cert 81752



Control Valve



NOTE: THE PURPOSE OF THIS MAP IS TO IDENTIFY THE APPROXIMATE LOCATION OF THE WATER RIGHT. IT IS NOT INTENDED TO PROVIDE INFORMATION RELATIVE TO THE LOCATION OF PROPERTY OWNERSHIP BOUNDARY LINES.

DRAWING: ':\WP FILES\Public Project_30-02-016 - Partly Water Rights Consulting\02 Misc Engineering Cat\052 Double M.2012 TRF.dwg
PRINTED By: rwillard on 04/21/20 06:09 AM