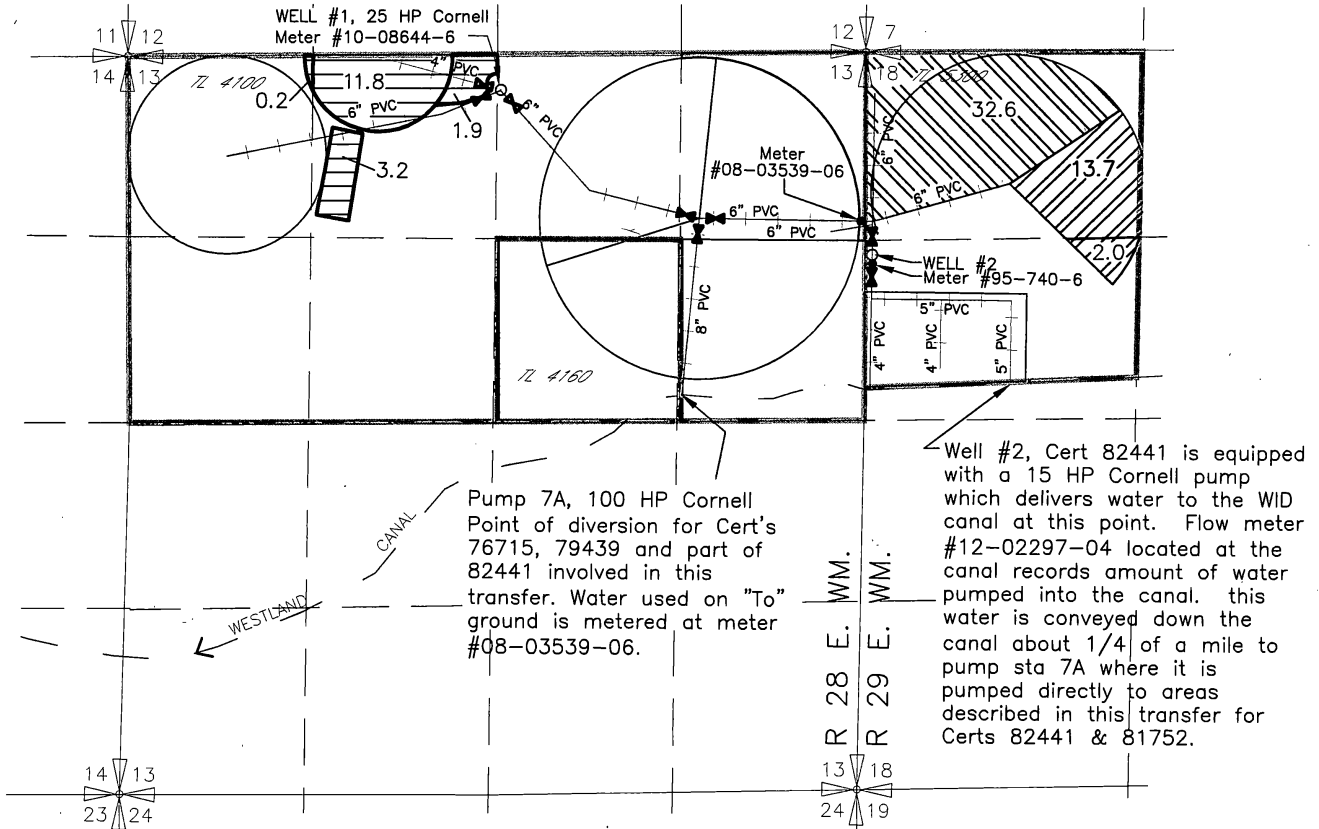


AMENDED CLAIM OF BENEFICIAL USE MAP WESTLAND IRRIGATION DISTRICT DOUBLE M RANCH, INC - TRANSFER T-11328 CERT'S 76715, 79439, 82441 AND 81752 T3N, R 28 & 29 E, W.M.



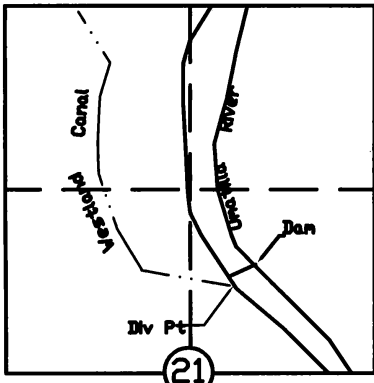
WELL #1 Located 270' South & 2540' West from the NE corner section 13, T3N, R28E, WM

WELL #2 Located 1450' South & 3160' West from the N 1/4 corner section 18, T3N, R29E, WM T3N., R 29E., W.M.

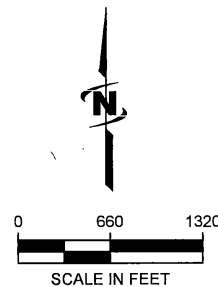
15.7 ac Primary Cert. 76715 & Supplemental Cert. 79439

32.6 ac Cert 82441

17.1 ac Cert 81752



Control Valve



NOTE: THE PURPOSE OF THIS MAP IS TO IDENTIFY THE APPROXIMATE LOCATION OF THE WATER RIGHT. IT IS NOT INTENDED TO PROVIDE INFORMATION RELATIVE TO THE LOCATION OF PROPERTY OWNERSHIP BOUNDARY LINES.