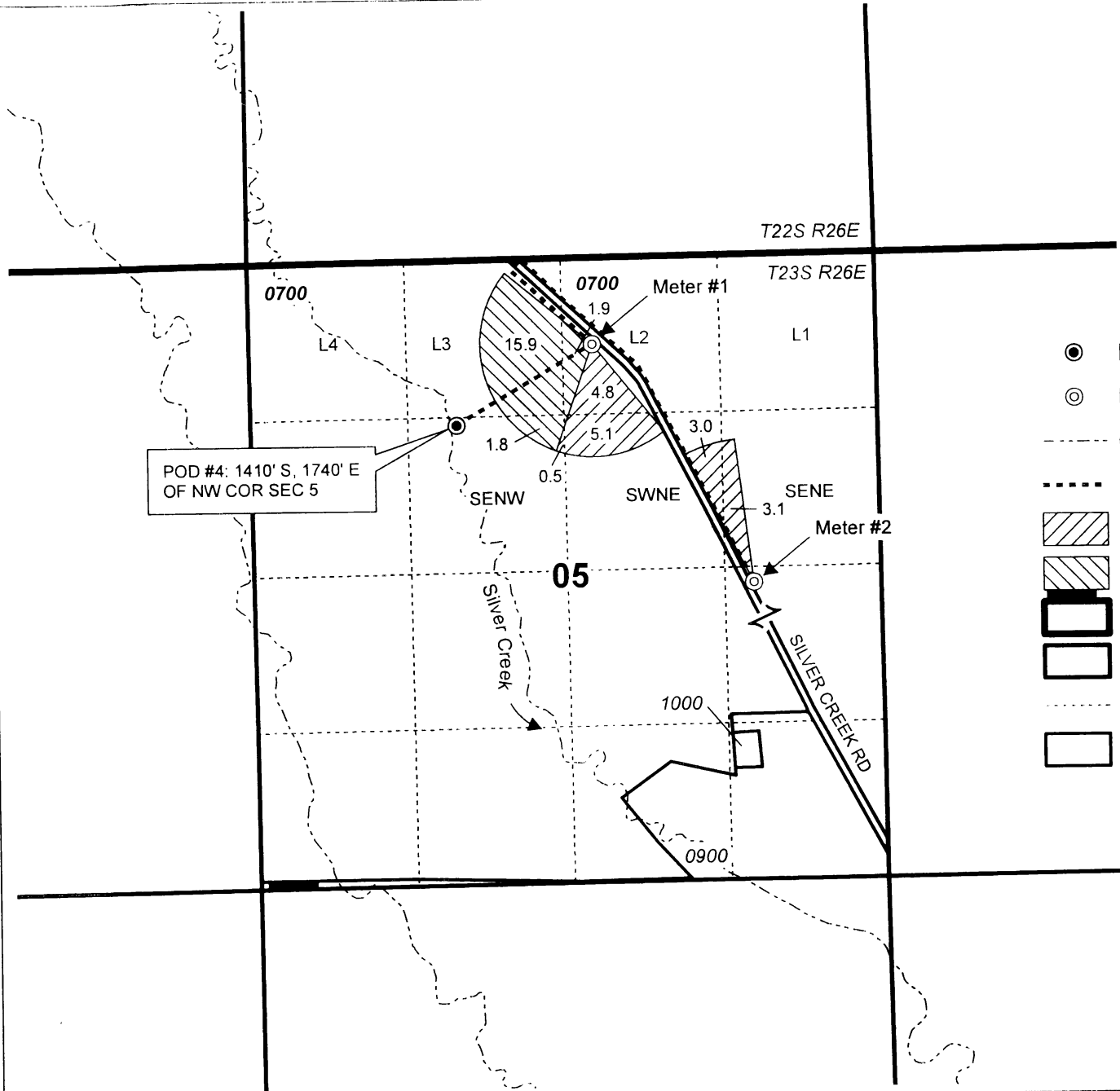


T23S R26E, WM
HARNEY COUNTY, OREGON

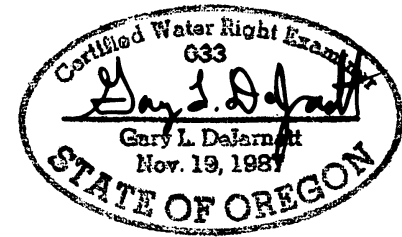


0 1,320
Feet
1" = 1,320'



- POD
- ⊙ Pivot Meter (For POD #4 Measuring Devices)
- - - - - Creek
- - - - - Pipeline
- POU IR (1877) - from C-14058
- POU IR (1877) - from C-14067
- Township
- Section
- - - - - Quarter Quarter
- Tax Lot

RECEIVED
MAY 13 2020
WBRD



RENEWAL DATE 12/31/2021

CLAIM OF BENEFICIAL USE MAP
Dry Mountain Ranch, LLC

NOTE: THIS MAP IS NOT INTENDED TO
PROVIDE LEGAL DIMENSIONS OR LOCATIONS
OF PROPERTY OWNERSHIP LINES.

WATER RIGHT SERVICES, LLC
PO BOX 1830, BEND, OR 97709
CCB# 197121 www.oregonwater.us
541-389-2837 JOHNSHORT@USA.COM