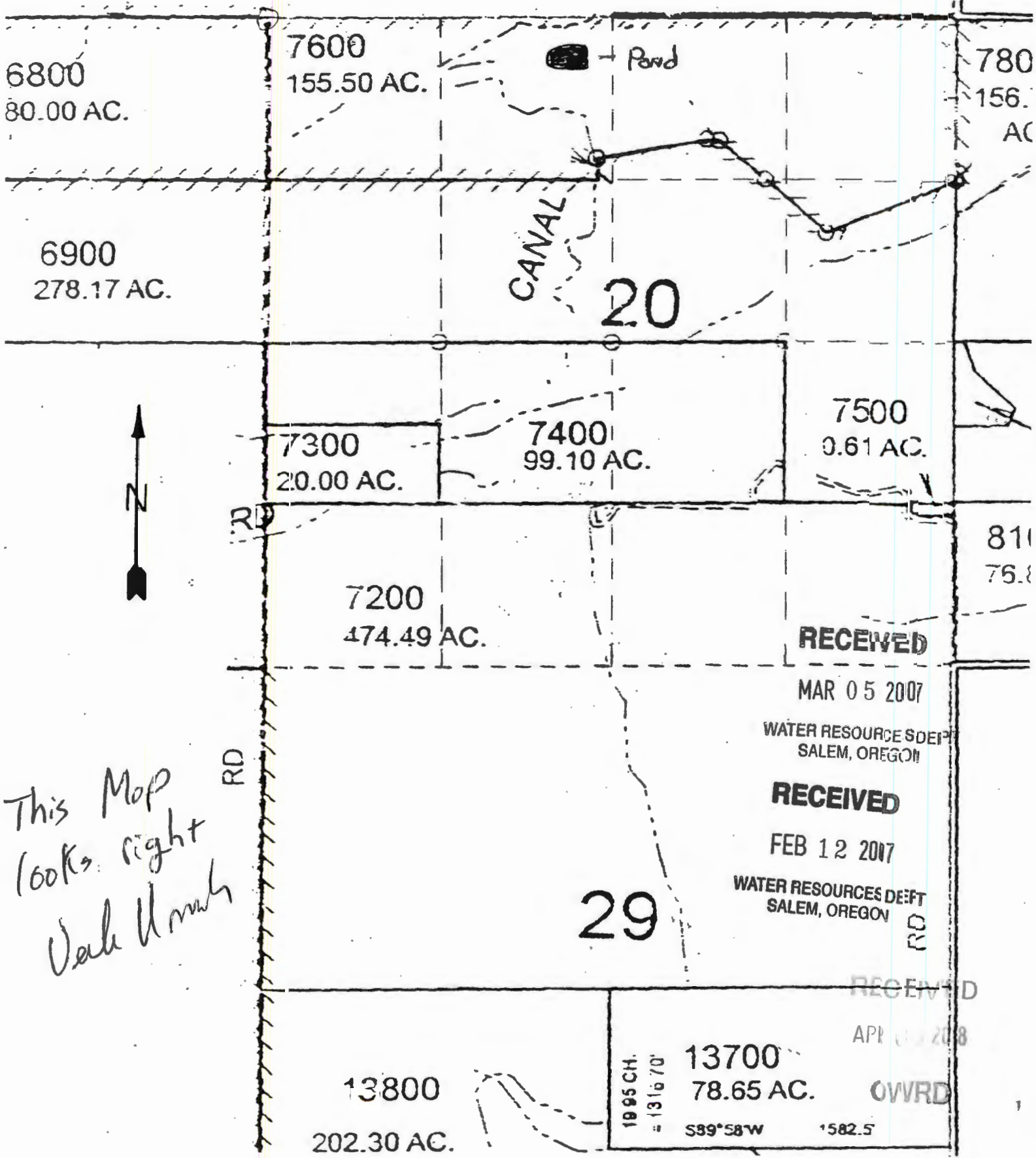


N 00111  
R 14446

# SW1/4 T.16S. R.47E. W.M. MALHEUR COUNTY

1" = 1000'  
2420' EAST 275' South  
off NW CORNER Sec. 20



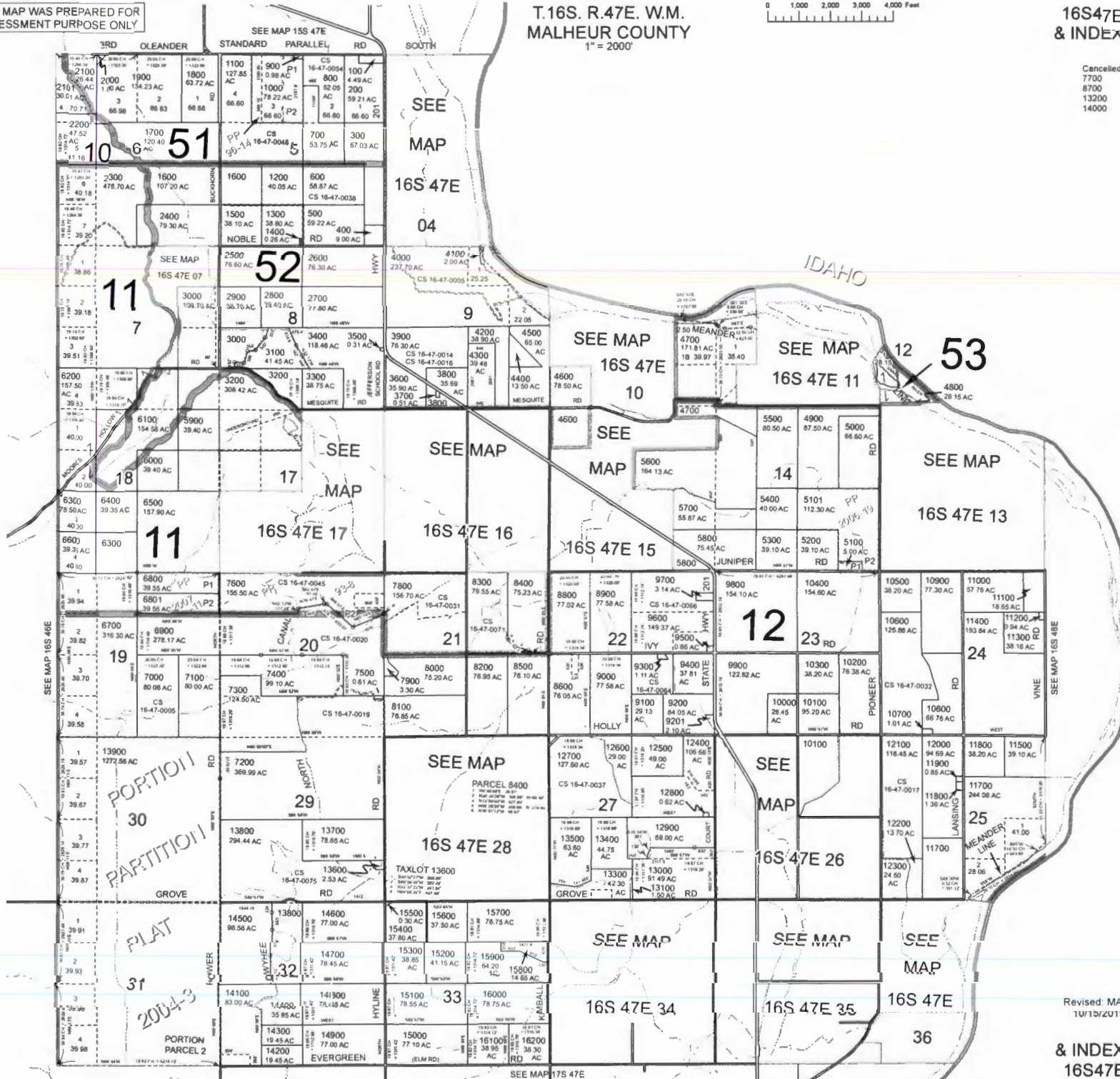
THIS MAP WAS PREPARED FOR ASSESSMENT PURPOSE ONLY

T.16S. R.47E. W.M. MALHEUR COUNTY 1" = 2000'



16S47E & INDEX

Cancelled  
7700  
8700  
13200  
14000



Revised: MA 11/15/2019

& INDEX 16S47E