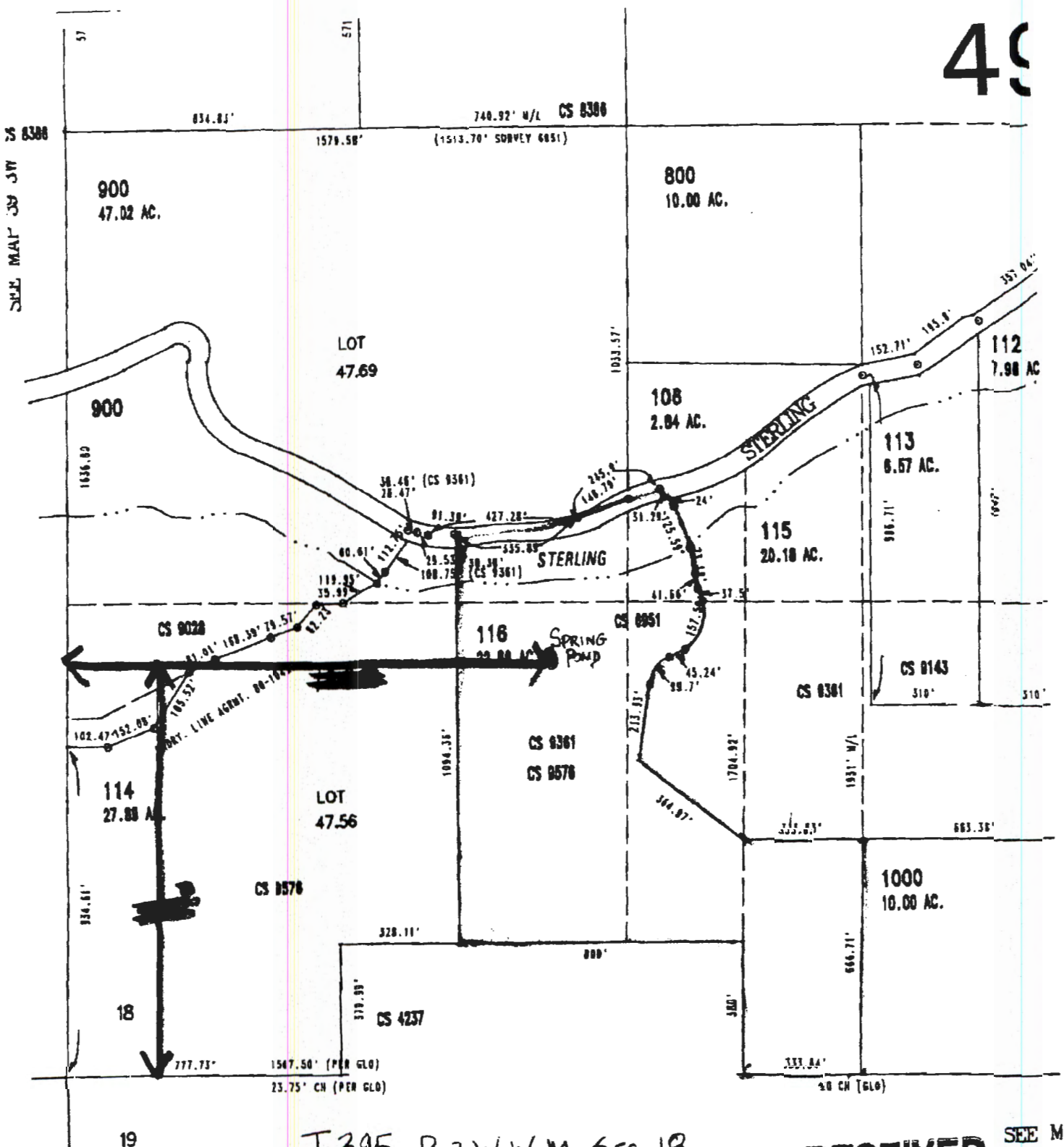


49



T. 345 R. 2 W. W. M. SEC. 18

Mark Charles / Ila Sacks  
10275 STERLING CREEK RD  
JACKSONVILLE, OR 97530

RECEIVED SEE M

JAN 07 2008

WATER RESOURCES DEPT  
SALEM, OREGON

RECEIVED

MAR 15 2018

OWRD

RECEIVED

MAR 20 2018

OWRD

SEE MAP 39 SW

CS 8388

19

1547.50' (PER GLO)  
23.75' CH (PER GLO)

50 CH (GLO)

900  
47.02 AC.

800  
10.00 AC.

LOT  
47.69

108  
2.84 AC.

112  
7.98 AC.

113  
6.57 AC.

115  
20.18 AC.

116  
22.88 AC.

CS 8361  
CS 8578

114  
27.88 AC.

CS 8578

1000  
10.00 AC.

CS 4237

18

777.75'

328.11'

800'

360'

666.71'

663.38'

1931' W/L

1704.92'

213.31'

1094.35'

102.47-152.08'

CS 9028

CS 8851

CS 8143

CS 8381

36.46' (CS 8361)  
28.47'

245.9'  
148.75'

81.38' 427.28'  
29.53' 38.38'

51.76' 23.59'  
24'

119.92'  
39.89'

100.75' (CS 8361)

41.66' 37.5'

41.01' 169.39' 78.57'

SPRING POND

CS 8851

1636.89'

1033.57'

152.71'

155.8'

357.06'

1047'

916.71'

900

1636.89'

834.84'

1579.58'

748.92' W/L CS 8388

(1513.70' SURVEY 6851)

57

571

19