

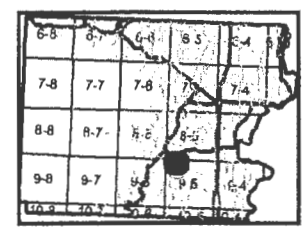
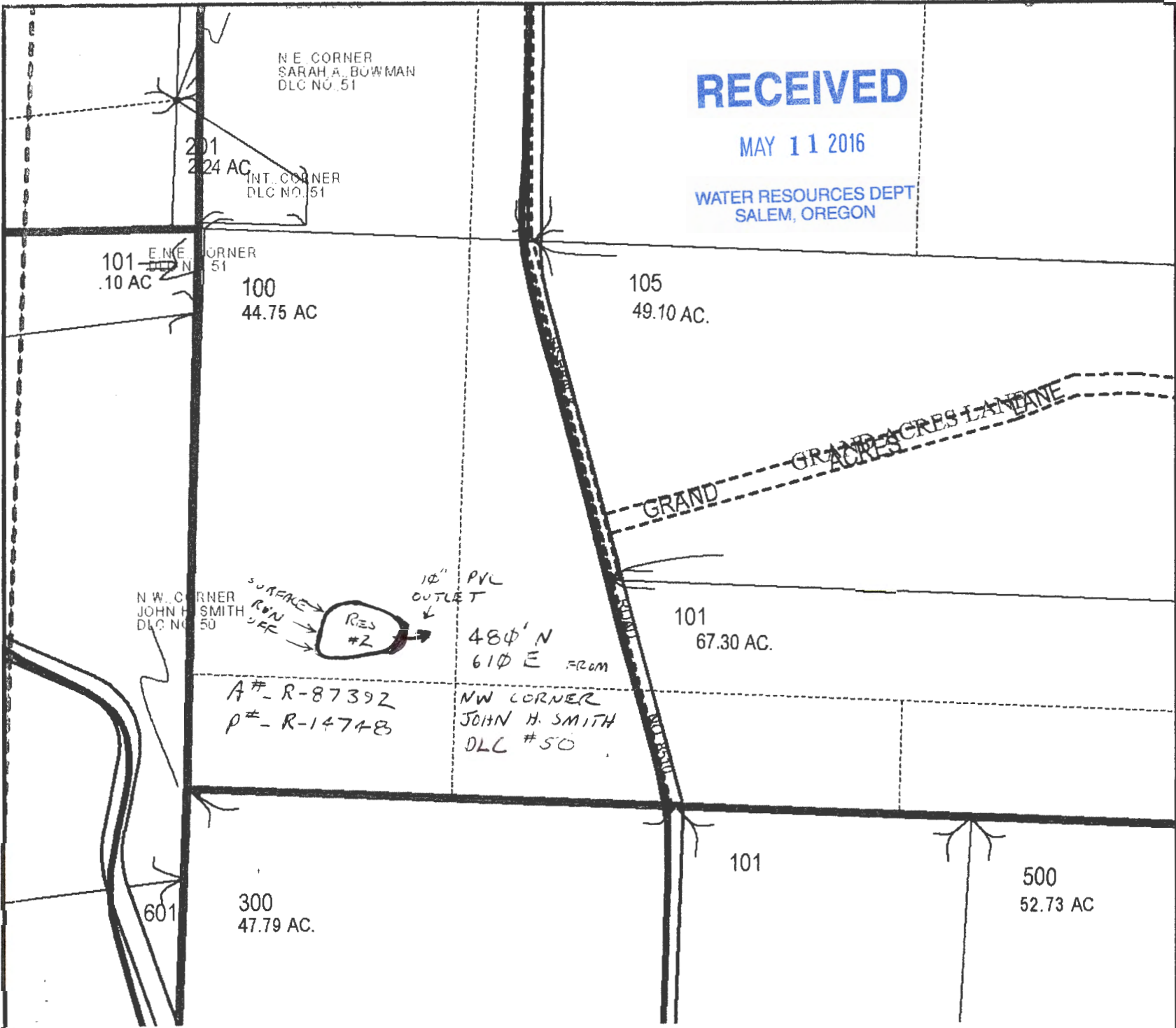
RECEIVED

MAY 11 2016

WATER RESOURCES DEPT
SALEM, OREGON

9.5.5

- CntlMap
- cntlarc
- cntlmap
- DLC
- Railroad
- Roads
- GRAVEL
- Section
- Subdivision
- Taxlot14
- Taxlot Arrows14
- Taxlot Boundary14
- taxlot14
- TaxMap
- 2
- 32
- 33
- 34
- 47
- 7
- 8
- Updates



6/16/2014

1 in. = 400 ft.

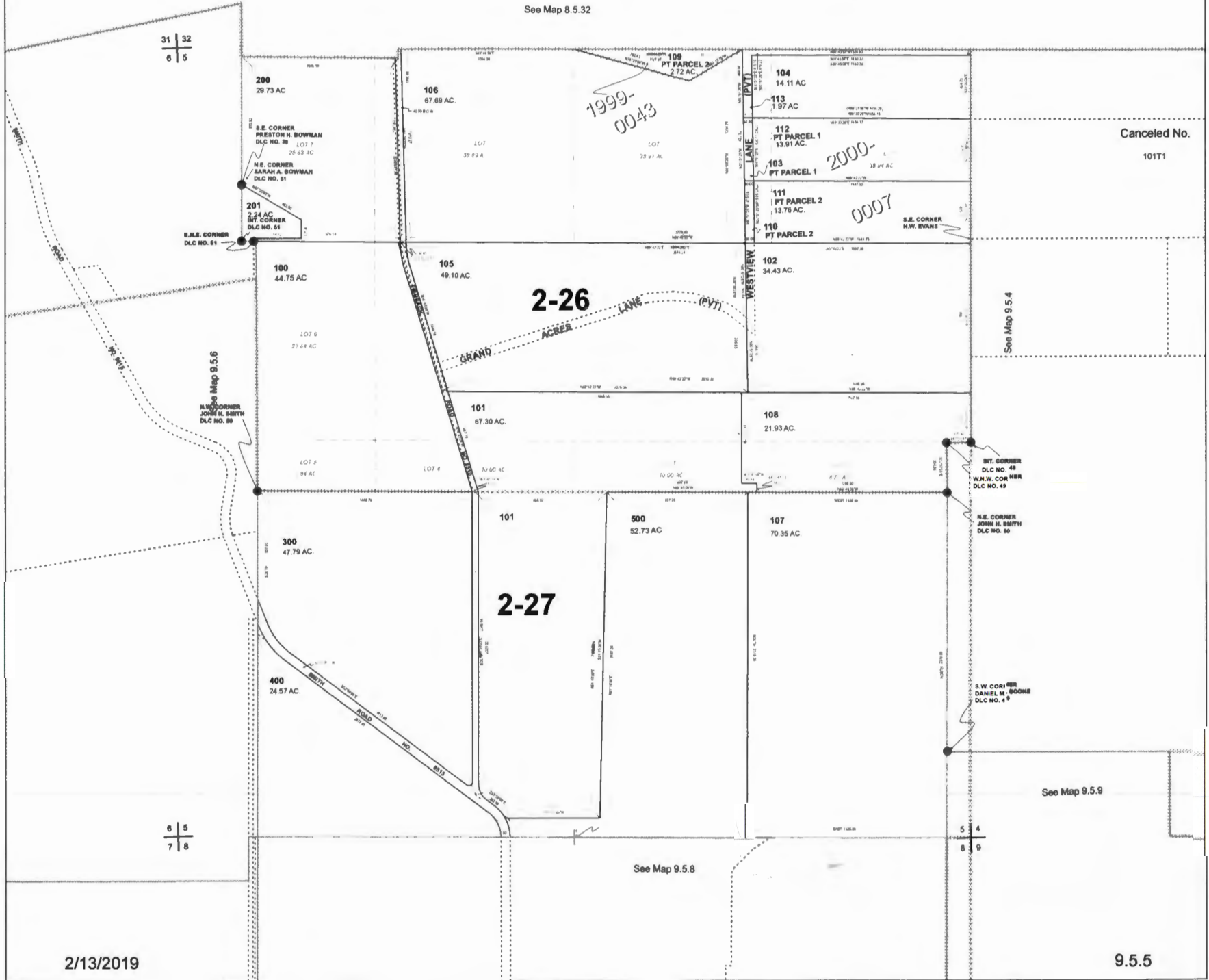
This map was produced using the Polk County GIS data. The GIS data is maintained by the county to support its governmental activities. The county is not responsible for map errors, omissions, misuse or misinterpretation.

THIS MAP IS FOR ASSESSMENT AND TAXATION PURPOSES ONLY

SEC. 5 T.9S. R.5W. W.M.
Polk County
1" = 400'

9.5.5

See Map 8.5.32



31 | 32
6 | 5

200
29.73 AC

S.E. CORNER
PRESTON H. BOWMAN
DLC NO. 38
LOT 7
25.63 AC

N.E. CORNER
SARAH A. BOWMAN
DLC NO. 51

201
2.24 AC
INT. CORNER
DLC NO. 51

S.W. CORNER
DLC NO. 51

See Map 9.5.6

S.W. CORNER
JOHN G. SMITH
DLC NO. 89

100
44.75 AC

LOT 9
23.24 AC

LOT 5
94 AC

300
47.79 AC

400
24.57 AC

6 | 5
7 | 8

106
67.69 AC

LOT
33.29 AC

105
49.10 AC

101
67.30 AC

LOT 4
10.00 AC

2-27

500
52.73 AC

See Map 9.5.8

1999-0043

109
PT PARCEL 2
2.72 AC

LOT
33.91 AC

104
14.11 AC

113
1.97 AC

112
PT PARCEL 1
13.91 AC

103
PT PARCEL 1
39.94 AC

111
PT PARCEL 2
13.76 AC

110
PT PARCEL 2

102
34.43 AC

108
21.93 AC

107
70.35 AC

2000-0007

S.E. CORNER
H.W. EVANS

SIT. CORNER
DLC NO. 48
N.W. CORNER
DLC NO. 49

S.E. CORNER
JOHN G. SMITH
DLC NO. 89

S.W. CORNER
DANIEL M. BOOHE
DLC NO. 49

5 | 4
8 | 9

See Map 9.5.9

Canceled No.
101T1

See Map 9.5.4