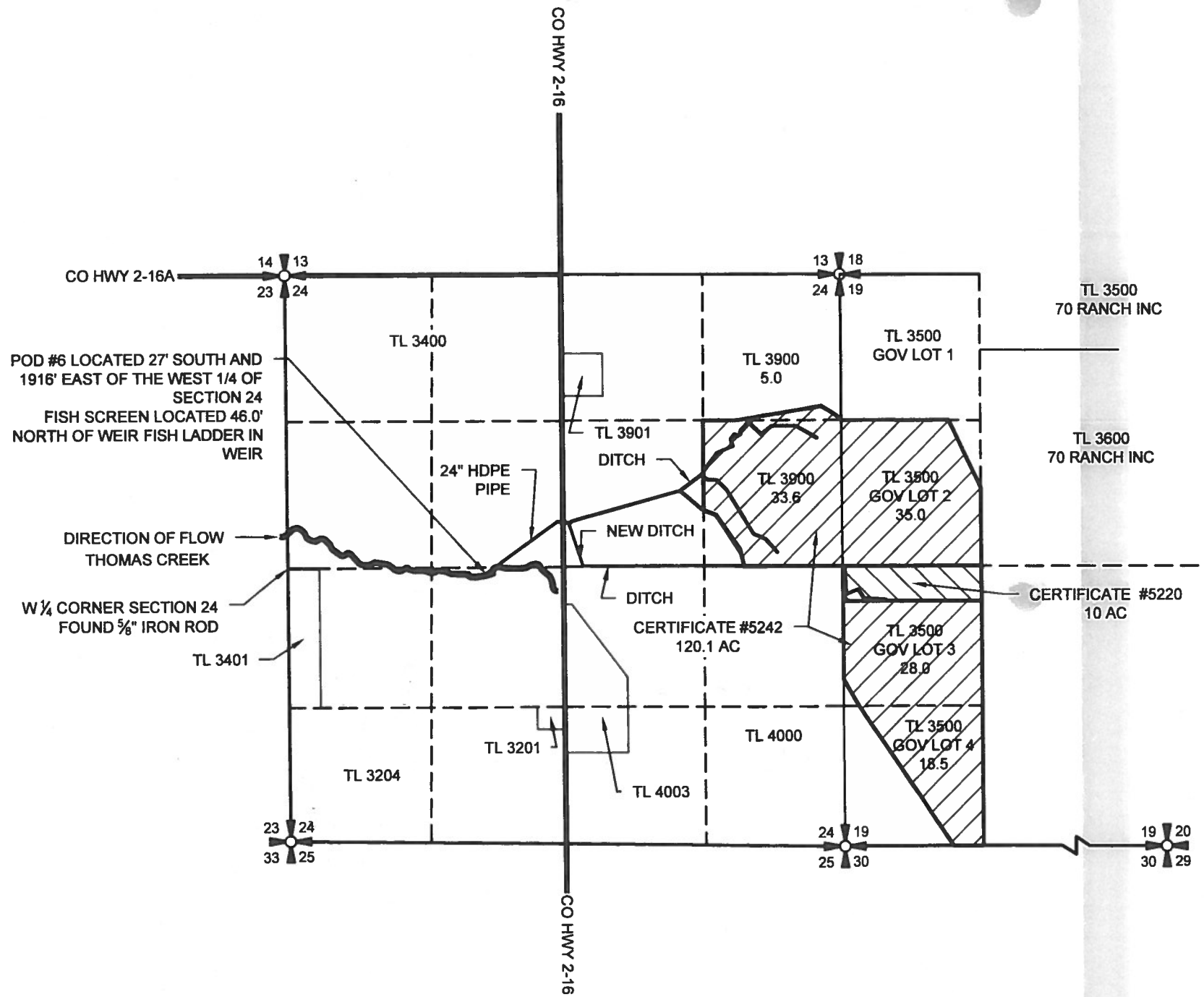


1062

# CLAIM OF BENEFICIAL USE MAP

FOR  
**JIM McNELEY-70 RANCH INC.**  
SECTION 24 TOWNSHIP 38 SOUTH RANGE 19 EAST  
AND  
SECTION 19 TOWNSHIP 38 SOUTH RANGE 20 EAST  
W.M.,  
LAKE COUNTY, OREGON



RENEWAL 12/31/17

### LEGEND

- SECTION LINE
- RANGE LINE
- 1/4 1/4 LINE
- LOT/TAX LINES
- DISTRIBUTION DITCH
- ROAD

- PRIMARY IRRIGATION PER CERTIFICATE #5242
- PRIMARY IRRIGATION PER CERTIFICATE #5220

SHOWING WATER RIGHTS #5242 & #5220  
PRIORITY DATE APRIL 21, 1871

NOTE:  
PREPARATION OF THIS MAP IS FOR IDENTIFYING PROPOSED  
WATER RIGHTS ONLY. IT HAS NO INTENT TO PROVIDE  
LOCATIONS OR DIMENSIONS OF PROPERTY BOUNDARIES.  
POD - POINT OF DIVERSION

# COBU MAP # 1062

REVISION	BY

**ANDERSON ENGINEERING  
AND SURVEYING, INC.**  
P.O. BOX 28  
LAKEVIEW, OREGON 97630  
(541) 947-4407  
FAX: 947-2321

FOR:  
70 RANCH INC  
22013 THOMAS CR RD  
LAKEVIEW OR, 97630  
541-947-4703

**CLAIM OF BENEFICIAL USE MAP**  
T-11748  
**JIM McNELEY - 70 RANCH**

DATE:	1/03/2017
SCALE:	1"=1320'
DWG. BY:	R.C.
JOB:	2016-102
FILE:	2016-102
SHEET:	1 OF 1

RECEIVED BY OWRD

JAN 25 2017

SALEM, OR