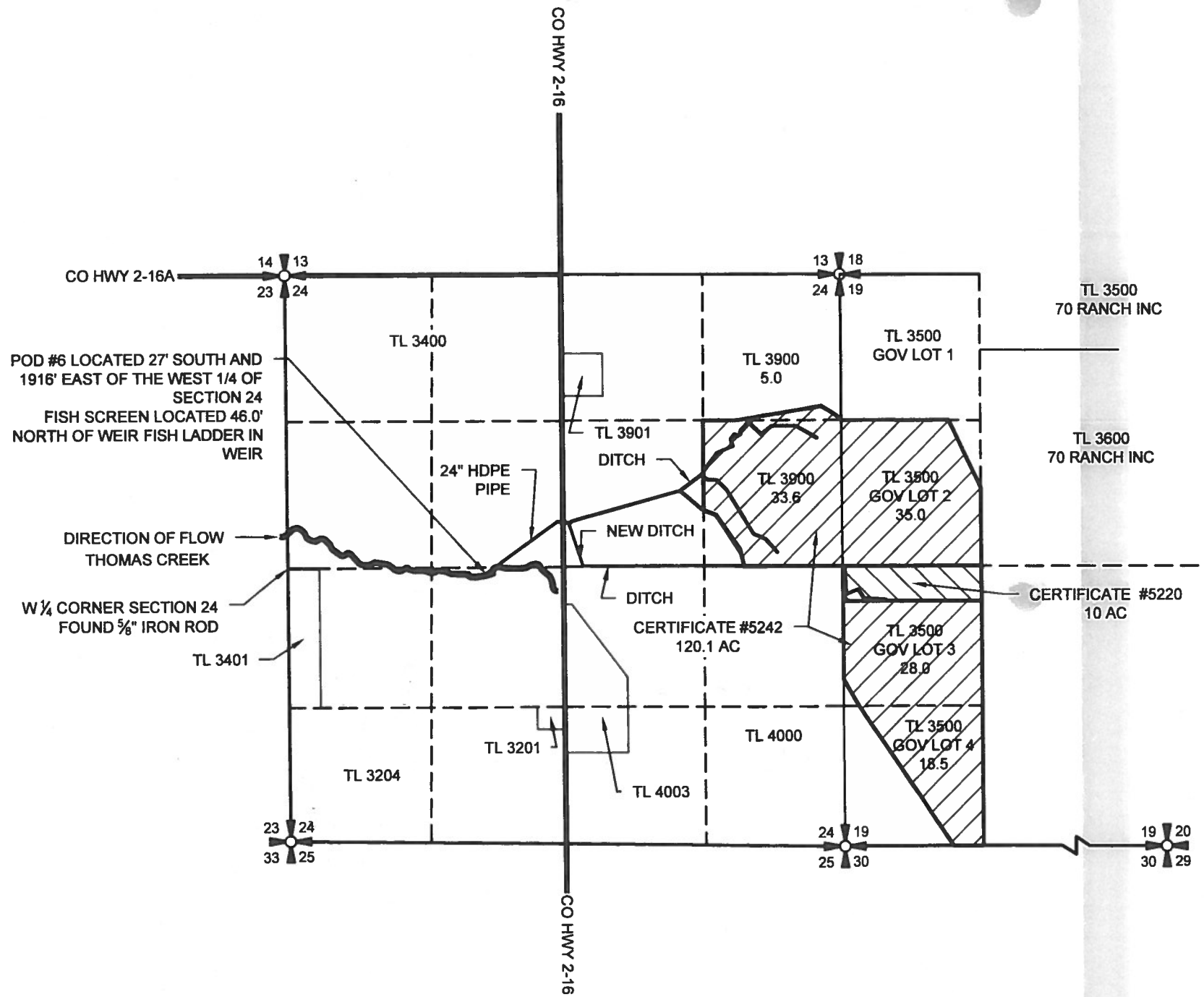


1062

CLAIM OF BENEFICIAL USE MAP

FOR
JIM McNELEY-70 RANCH INC.
SECTION 24 TOWNSHIP 38 SOUTH RANGE 19 EAST
AND
SECTION 19 TOWNSHIP 38 SOUTH RANGE 20 EAST
W.M.,
LAKE COUNTY, OREGON



RENEWAL 12/31/17

LEGEND

- SECTION LINE
- RANGE LINE
- 1/4 1/4 LINE
- LOT/TAX LINES
- DISTRIBUTION DITCH
- ROAD

- PRIMARY IRRIGATION PER CERTIFICATE #5242
- PRIMARY IRRIGATION PER CERTIFICATE #5220

SHOWING WATER RIGHTS #5242 & #5220
PRIORITY DATE APRIL 21, 1871

NOTE:
PREPARATION OF THIS MAP IS FOR IDENTIFYING PROPOSED
WATER RIGHTS ONLY. IT HAS NO INTENT TO PROVIDE
LOCATIONS OR DIMENSIONS OF PROPERTY BOUNDARIES.
POD - POINT OF DIVERSION

COBU MAP # 1062

REVISION	BY

**ANDERSON ENGINEERING
AND SURVEYING, INC.**
P.O. BOX 28
LAKEVIEW, OREGON
97630
(541) 947-4407
FAX: 947-2321

FOR:
70 RANCH INC
22013 THOMAS CR RD
LAKEVIEW OR, 97630
541-947-4703

CLAIM OF BENEFICIAL USE MAP
T-11748
JIM McNELEY - 70 RANCH

DATE:	1/03/2017
SCALE:	1"=1320'
DWG. BY:	R.C.
JOB:	2016-102
FILE:	2016-102
SHEET:	1 OF 1

RECEIVED BY OWRD

JAN 25 2017

SALEM, OR