
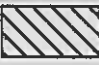




COBU MAY #1222


T5N, R35E, WM
Sections 3, 4, 5, 8, 9, 10
T6N, R35E, WM
Sections 31 and 32
UMATILLA COUNTY

 Place of Use (Cert 86441)
Water used for Primary Irrigation of 1528.0 acres previously authorized by Cert 86441.

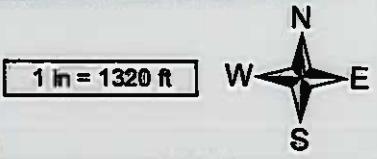
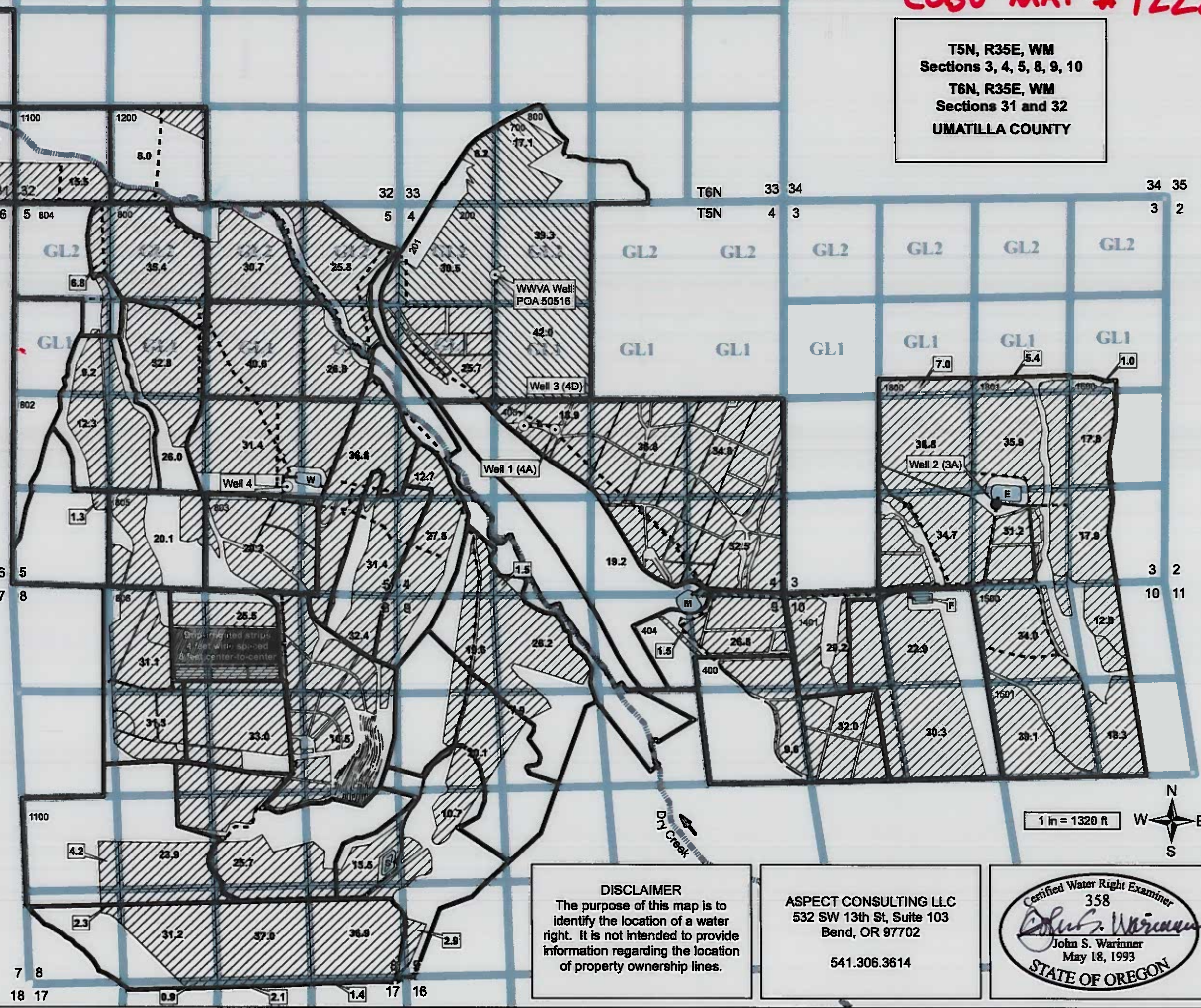
 Place of Use (Cert 88639)
Water used for Supplemental Irrigation of 135.1 acres previously authorized by Cert 88639.

 Points of Appropriation
SeVein Well 1 (POA 4A): 415 ft S and 500 ft W from Center of Section 4. Flowmeter in same location. Well Log UMAT 55523.
SeVein Well 3 (POA 4D): 375 ft S and 940 ft W from Center of Section 4. Flowmeter in same location. Well Log UMAT 56982.
SeVein Well 4 (West Pond Well): 1360 ft N and 1575 ft W from SE Corner of Section 5. Flowmeter in same location. Well Log UMAT 57714.
WWVA Well 1 (POA 50516): 930 ft S and 1355 ft E from NW Corner of Section 4. Flowmeter in same location. Well Log UMAT 50516.

 POA Excluded
SeVein Well 2 (POA 3A): 1156 ft N and 314 ft E from S/4 Corner of Section 3. Flowmeter in same location. Well Log UMAT 55526. Use of this well is now authorized by Certificate 93971.

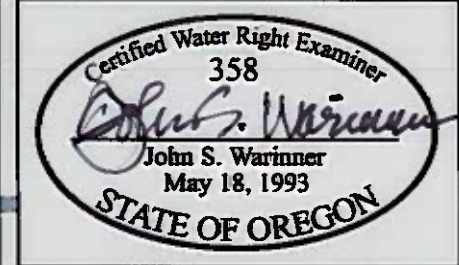
 Conveyance
Water distributed in buried pressure pipelines ranging in size from 6 to 15 inches in diameter.

RECEIVED
APR 28 2019
OWRD



DISCLAIMER
The purpose of this map is to identify the location of a water right. It is not intended to provide information regarding the location of property ownership lines.

ASPECT CONSULTING LLC
532 SW 13th St, Suite 103
Bend, OR 97702
541.306.3614



CLAIM OF BENEFICIAL USE MAP
Transfer 12234
in the name of
SEVEN HILLS PROPERTIES, LLC
Revised: 2020-03-26