

THIS MAP WAS PREPARED FOR ASSESSMENT PURPOSE ONLY

RECEIVED

JUL 16 2001

WATER RESOURCES DEPT. SALEM, OREGON

SEE MAP 27 7 36C

SEC. 11, T.28S. R.7W. W.M. DOUGLAS COUNTY

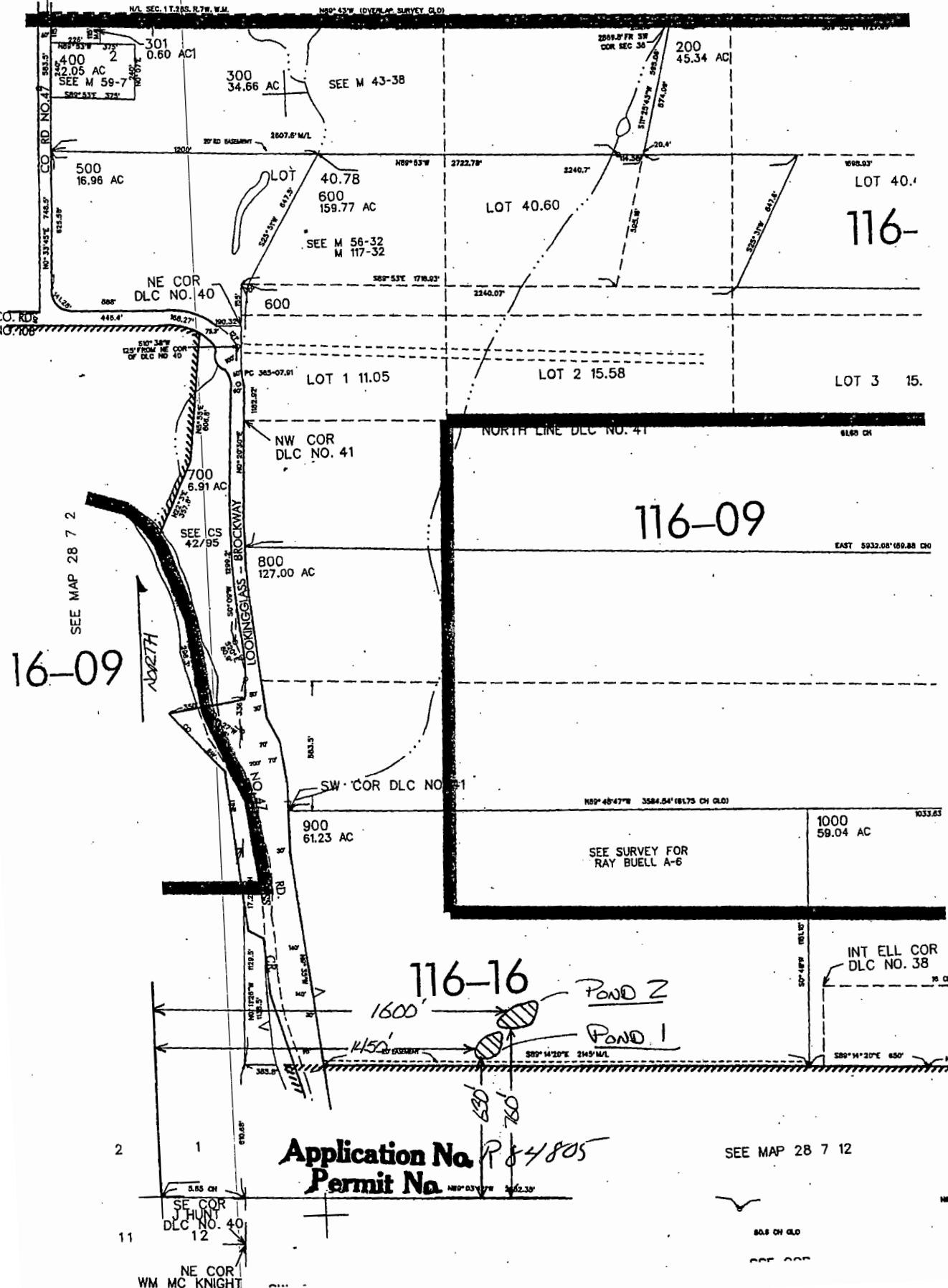
1" = 400'

RECEIVED

JUN 26 2018

OWRD

35 36



16-09

116-09

116-16

POND 2

POND 1

Application No. R 4805
Permit No.

SEE MAP 28 7 12

2 1 11
SE COR HUNT DLC NO. 40
NE COR WM MC KNIGHT

50.5 CH

50.5 CH

NSP