

Polk County Map

app no. R-86059  
Permit no.

Community Development

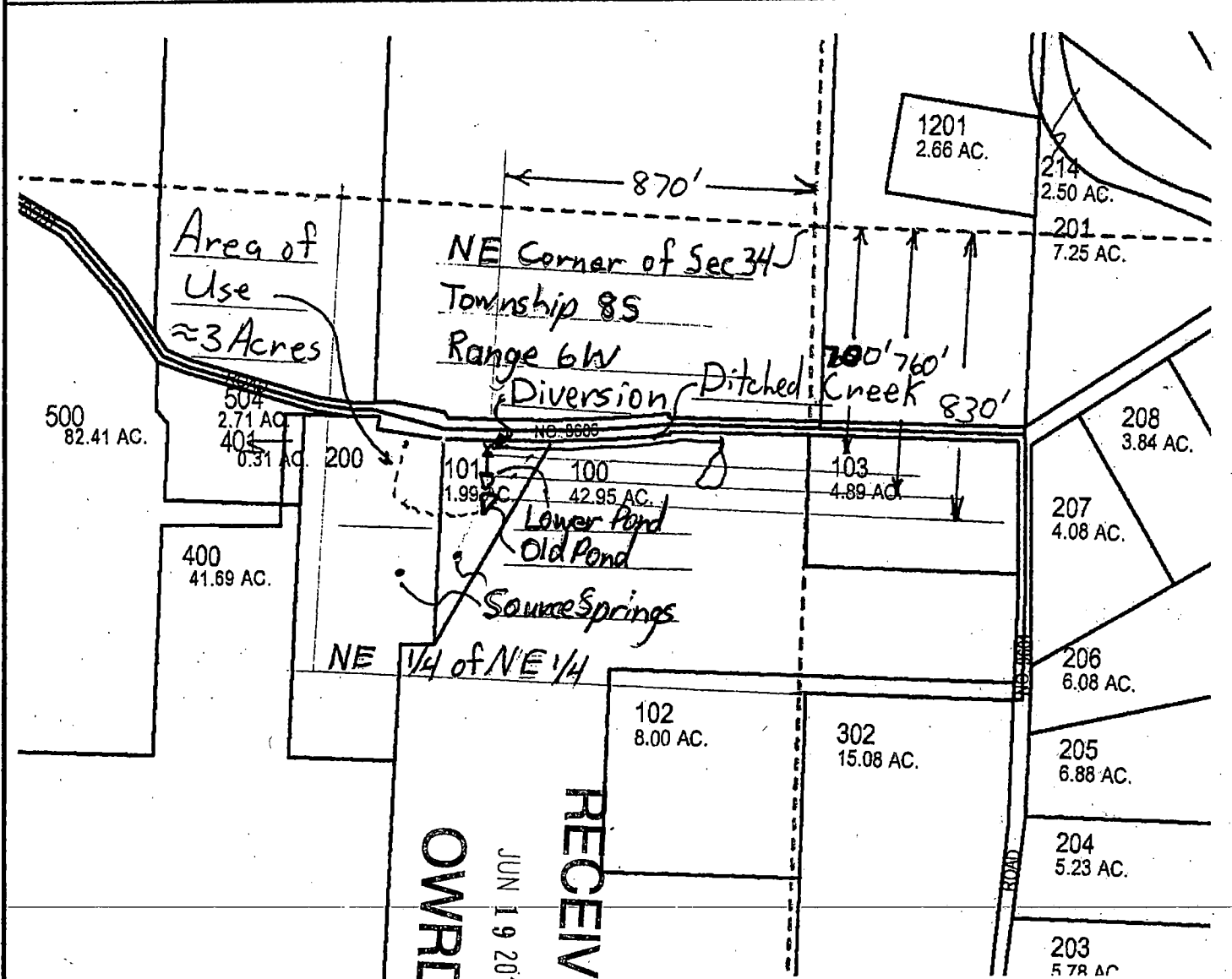
- Roads
  - OTHER
  - CO-GRAVL
  - STATEHWY
  - CO-PAVED
- Section
  - 1
  - 5
- Taxlot
  - Taxlot Arrows
  - Taxlot Boundary

The Dams form  
the North Edge  
of Both Ponds

RECEIVED

JUL 22 2004

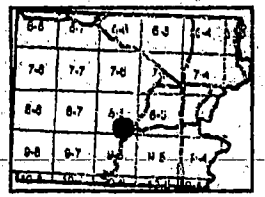
WATER RESOURCES DEPT  
SALEM, OREGON



NE 1/4 of NE 1/4

RECEIVED  
JUN 19 2018  
OWPRD

This map was produced using the Polk County GIS data. The GIS data is maintained by the county to support its governmental activities. The county is not responsible for map errors, omissions, misuse or misinterpretation.



4/14/2004

1 in. = 400 ft.