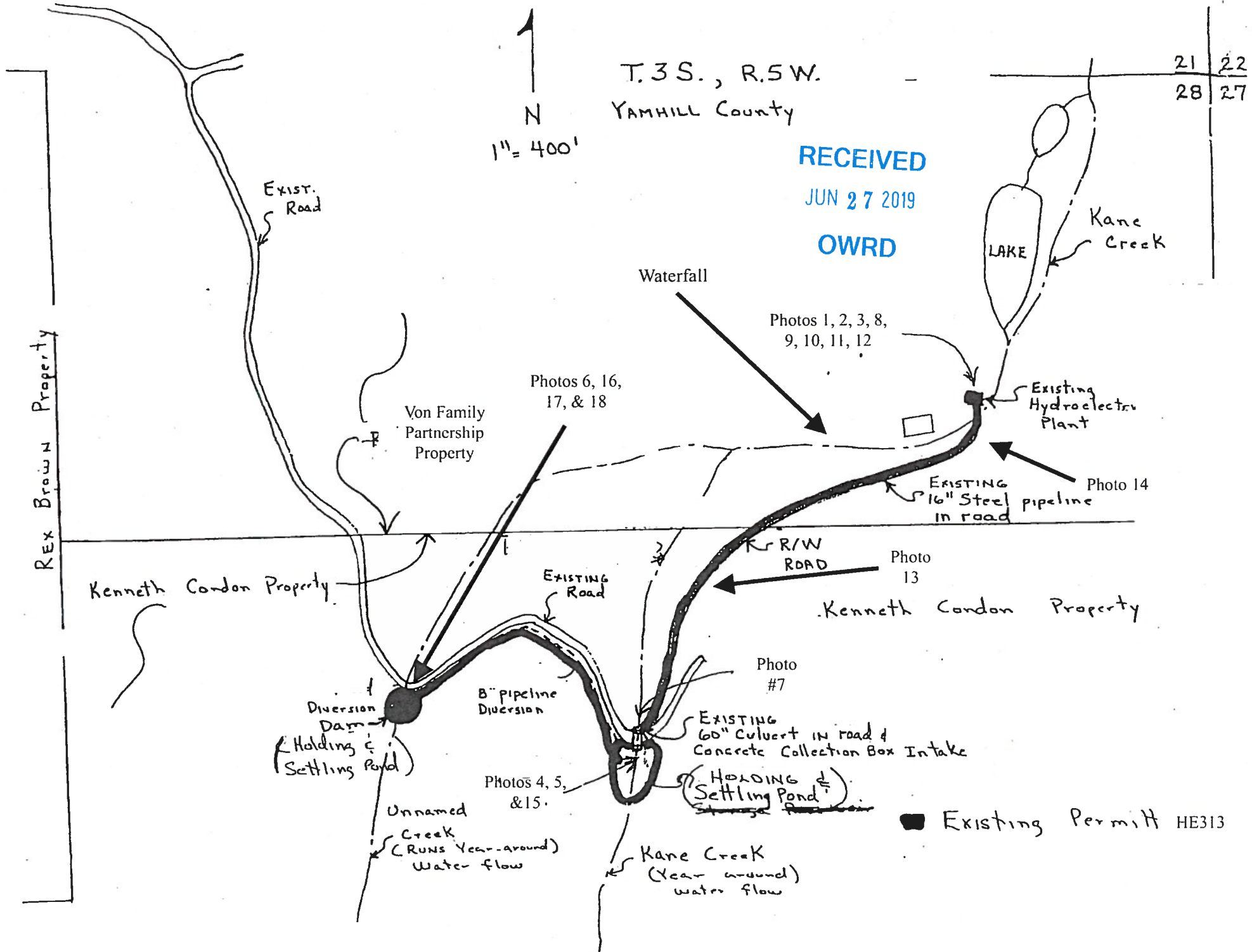


T.3 S., R.5 W.
YAMHILL County

21 22
28 27

N
1" = 400'

RECEIVED
JUN 27 2019
OWRD



Application to Reauthorize Hydroelectric Project HE313

76825

EXHIBIT A

RECEIVED
MAR 07 2019
OWRD

Text



1" = 400'

Point of Diversion Coordinates
2200 South and 1900 feet West
from the S.E. Corner of Sec. 21
T.3S., R.5.W., W.M.
S.W. 1/4 of N.E. 1/4 of Sec 28

N.W. 1/4, N.E. 1/4

Additional Future
Power Plant Sites

Power Plant

Water falls

Pipeline

N.E. 1/4, N.E. 1/4 Sec 28

Section 28

Township 3 South 5 WEST W.M.

Point of Diversion

S.W. 1/4, N.E. 1/4

N.E. 1/4, N.E. 1/4

21-22
28-27

RES.
G. VON

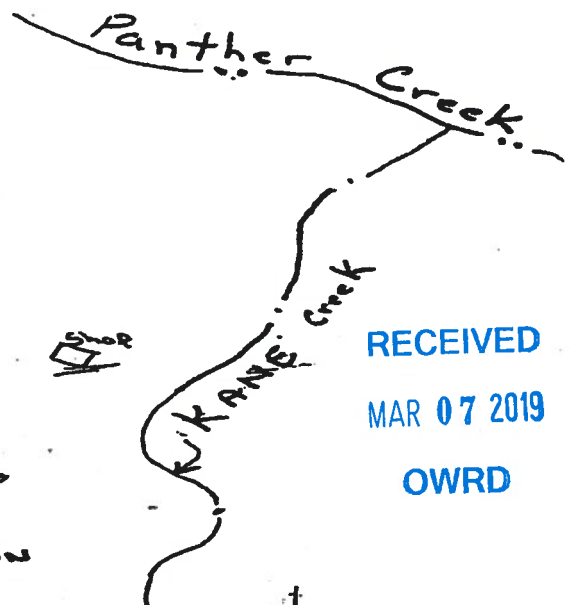
D. VON

RES.

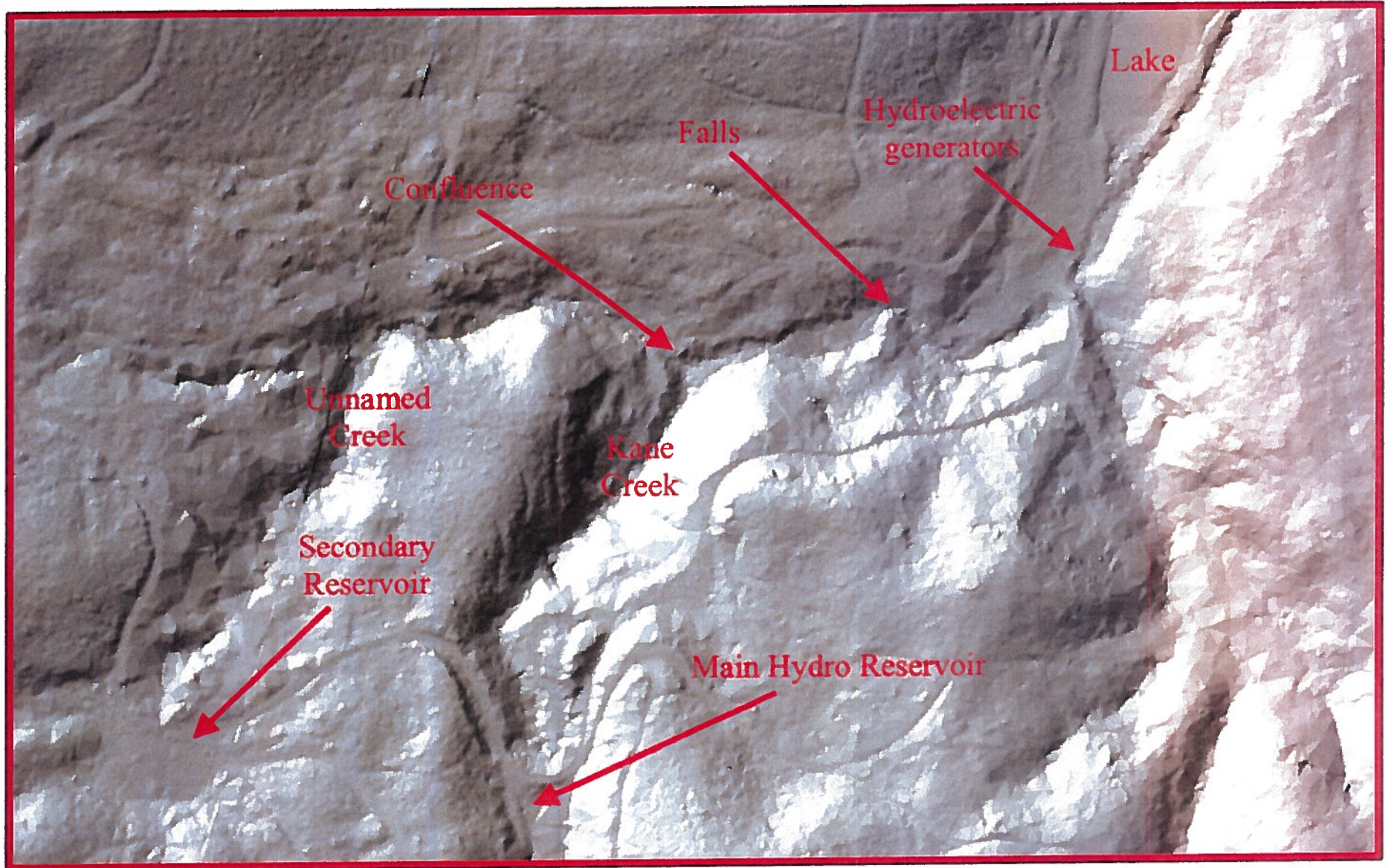
Shop

RES.

RES.



Kane Creek Falls



June 27, 2019

Bare Earth Lidar Hillshade

0
255

RECEIVED

JUN 27 2019

OWRD

