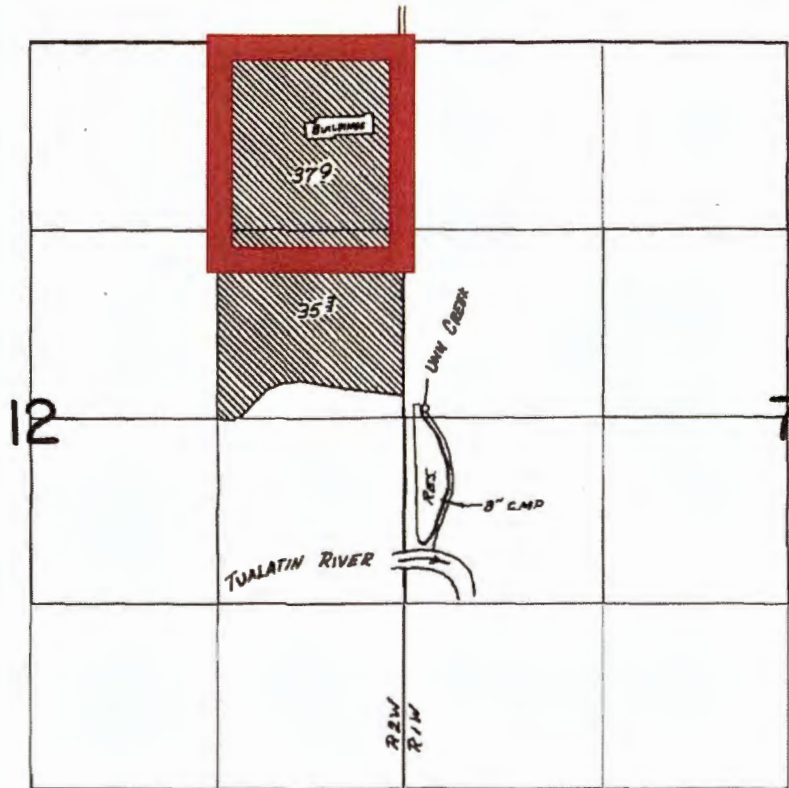


T.2S. R.1&2W. W.M.

Certificate 41911



44.9 acres to be voluntarily cancelled shown in red. Cancel all acres in TL 100: 37.9 acres in NENE, 7 acres in SENE.

CRPEX Div. Loc. 2580'S ± 150'E; RES. Loc. 3210'S ± 280'E BOTH FROM NW COR SEC 7.

FINAL PROOF SURVEY
UNDER

R-49470 R-6019
Application No. 49471 Permit No. 37057
IN NAME OF

FRED B. GRABHORN

Surveyed June 19, 1974, by R. G. MUCKEN

2.2 acres to be voluntarily cancelled
shown in red.

C. 41911

23089

23081

20143

2 S 2 W

41911

12

SENE

TL 2302

TL 2600

C1/4 Corner, Section 12

Part
CN
2.2

RECEIVED

OCT 26 2020

OWRD



1.7 acres to be voluntarily cancelled
shown in red.
C. 41911
TL 2302

TL
2302

TL
2302

Part CN
1.7

RECEIVED

OCT 26 2020

OWRD

C14 Corner, Section 12

SENE

SENE

SENE