

CLAIM OF BENEFICIAL USE R88660 R-15364

This map was prepared for assessment purposes only.

SECTION 30 T2S. R4E. W.M.

CLACKAMAS COUNTY

D.L.C.

JOHN R. GLOVER NO. 38, 48

2 4E 30

T2S R4E Section 30

TL 1105

Center of reservoir is located:

2550' N, 1180' E

from the SW corner of Section 30

Scale 1"=1000'

RECEIVED

SEP 03 2019

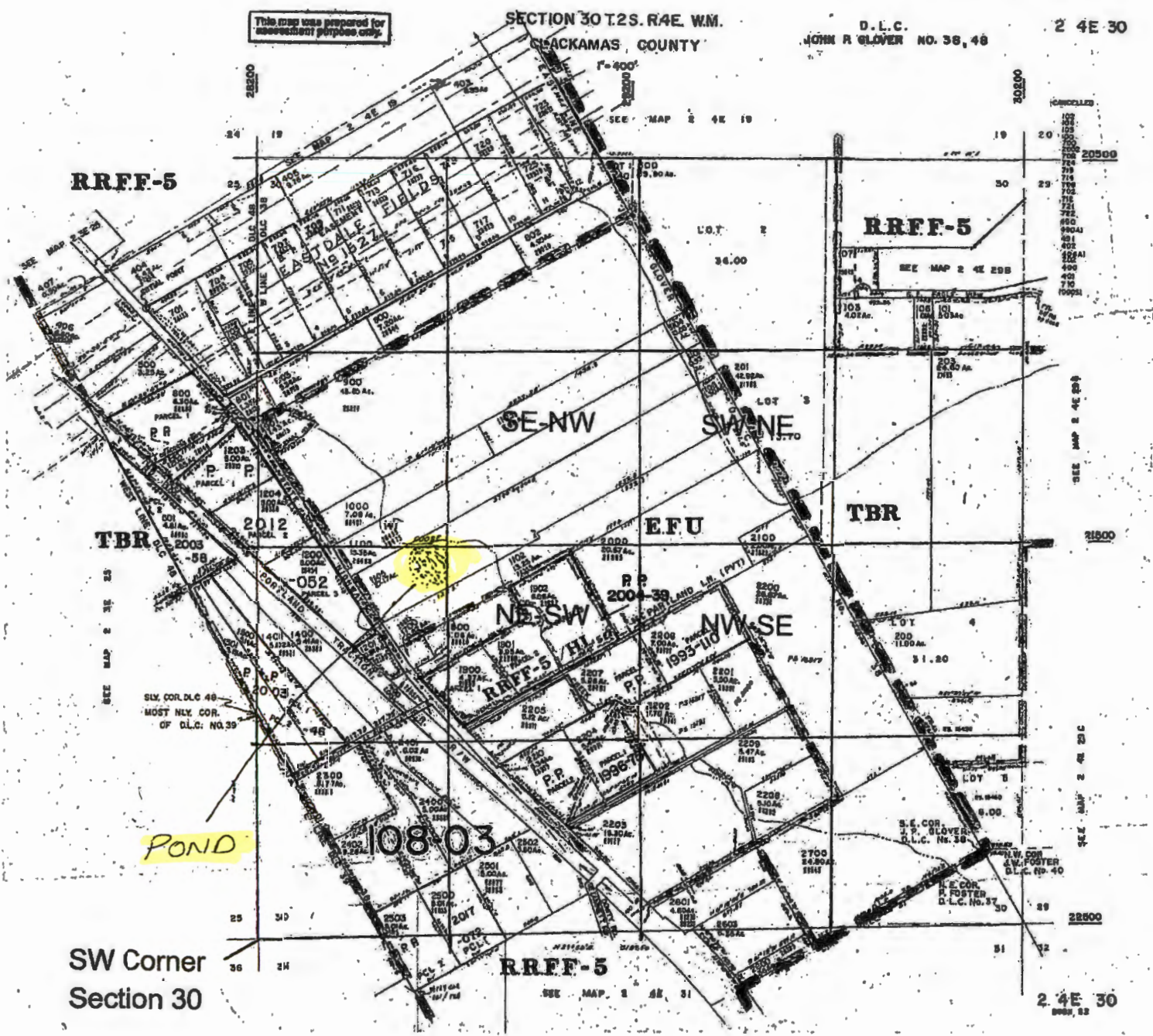
OWRD

RECEIVED

AUG 10 2018

OWRD

R-88660



RRFF-5

RRFF-5

TBR

EFU

TBR

POND

108.03

SW Corner Section 30

RRFF-5

2 4E 30