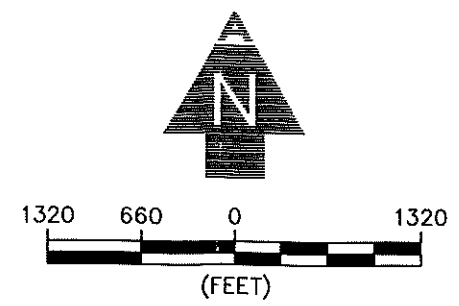
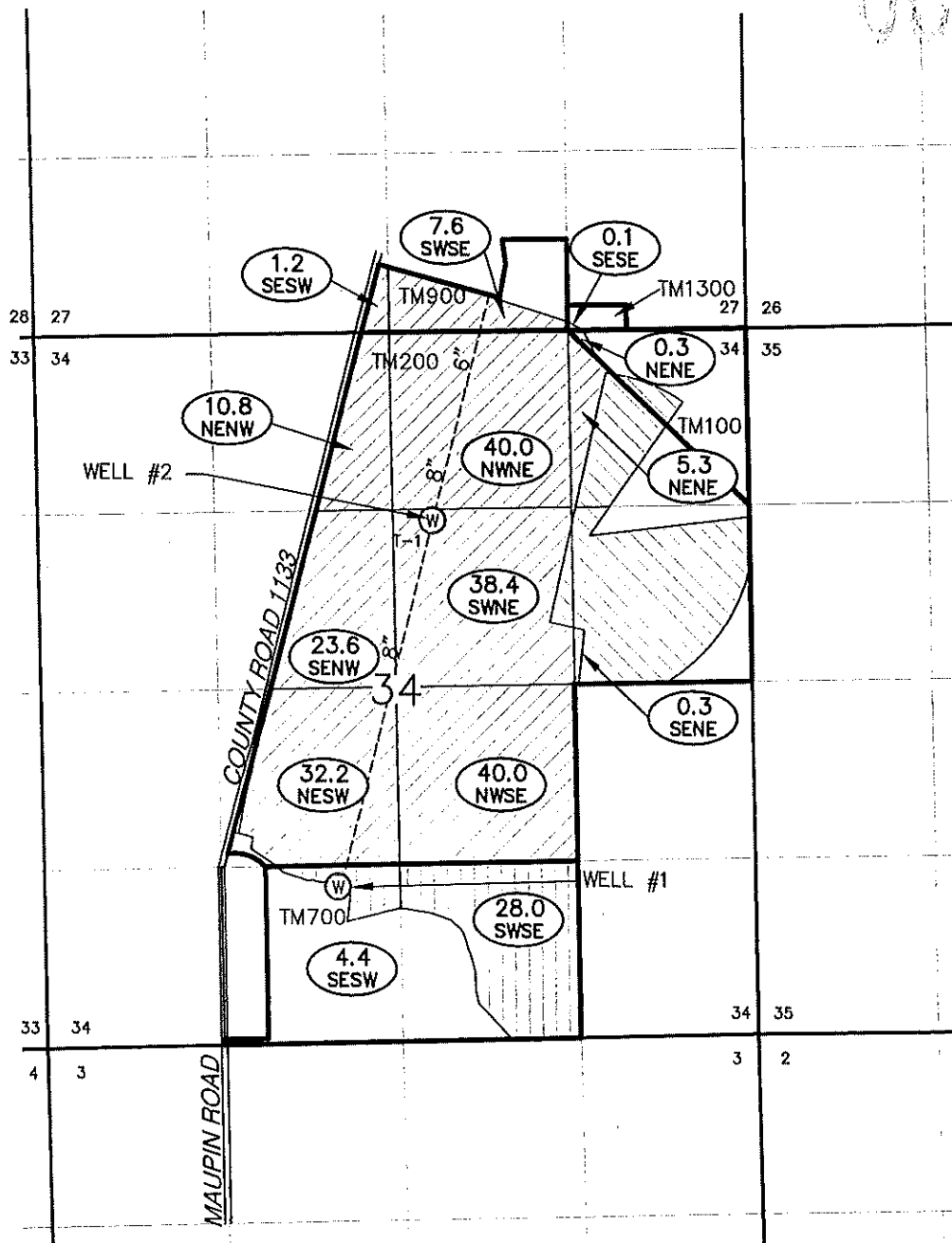


COBU MAP # 1122

COBU & FINAL PROOF MAP
FOR
CALIFORNIA GIANT, INC.
 IN SECTIONS 27 & 34, T40S, R12E W.M.
 KLAMATH COUNTY, OREGON
 TRANSFER T-11185



WELL TIES:

WELL #1: 1,125' NORTH AND 450' WEST OF THE S¼ OF SECTION 34, T41S, R12E, W.M.
WELL #2: 1,400' SOUTH AND 2,370' WEST FROM THE NE CORNER SECTION 34, T40S, R12E, W.M.

TAX MAP NUMBER	1/4 1/4	SECTION	TOWNSHIP	RANGE	WELL #	# IRRIGATED ACRES
900	SE SW	27	40S	R12E, WM	2	1.2
900	SW SE	27	40S	R12E, WM	2	7.6
1300	SE SE	27	40S	R12E, WM	2	0.1
100	NE NE	34	40S	R12E, WM	2	0.3
200	NE NE	34	40S	R12E, WM	2	5.3
200	NW NE	34	40S	R12E, WM	2	40.0
200	SW NE	34	40S	R12E, WM	2	38.4
200	SE NE	34	40S	R12E, WM	2	0.3
200	NE NW	34	40S	R12E, WM	2	10.8
200	SE NW	34	40S	R12E, WM	2	23.6
200	NE SW	34	40S	R12E, WM	2	32.2
200	NW SE	34	40S	R12E, WM	2	40.0
700	SW SE	34	40S	R12E, WM	1	28.0
700	SE SW	34	40S	R12E, WM	1	4.4

TOTAL ACRES IRRIGATED: 232.2

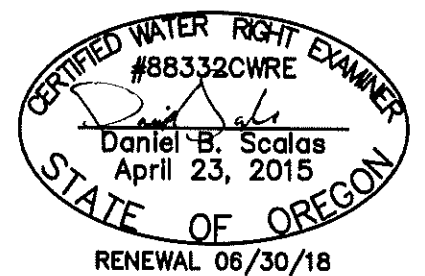
NOTES:

1. THIS MAP WAS PREPARED FROM FIELD VISIT, NAIP 2012 AERIAL PHOTOGRAPH, OREGON GLO MAP, AND KLAMATH COUNTY TAX MAPS 401227 & 401234.
2. THE PURPOSE OF THIS MAP IS TO IDENTIFY THE LOCATION OF THE WATER RIGHT ONLY, AND IS NOT INTENDED TO PROVIDE DIMENSIONS OR LOCATION OF PROPERTY LINES.
3. PRIORITY DATE OF ALL IRRIGATED LANDS SHOWN HEREON IS SEPTEMBER 26, 1950.

LEGEND

- IRRIGATED LANDS WELL #1
- IRRIGATED LANDS WELL #2
- CERTIFICATE 68137 IRRIGATED LANDS FROM WELL #2 (UNCHANGED)
- IRRIGATED ACREAGE
- 1/4 1/4 SECTION
- ROADWAY
- TAX MAP NUMBER
- SECTION NUMBER AND CENTER
- SECTION LINES
- SECTION, 1/4 1/4 LINE
- TAX LOT BOUNDARY
- EXISTING WELL
- WHEEL LINE

[Signature]
 APPLICANT SIGNATURE



1435 Esplanade Ave · Klamath Falls, Oregon 97601 · (541) 884-4666 · FAX (541) 884-5335
 Oregon · California

1122