

WESTLAND IRRIGATION DISTRICT

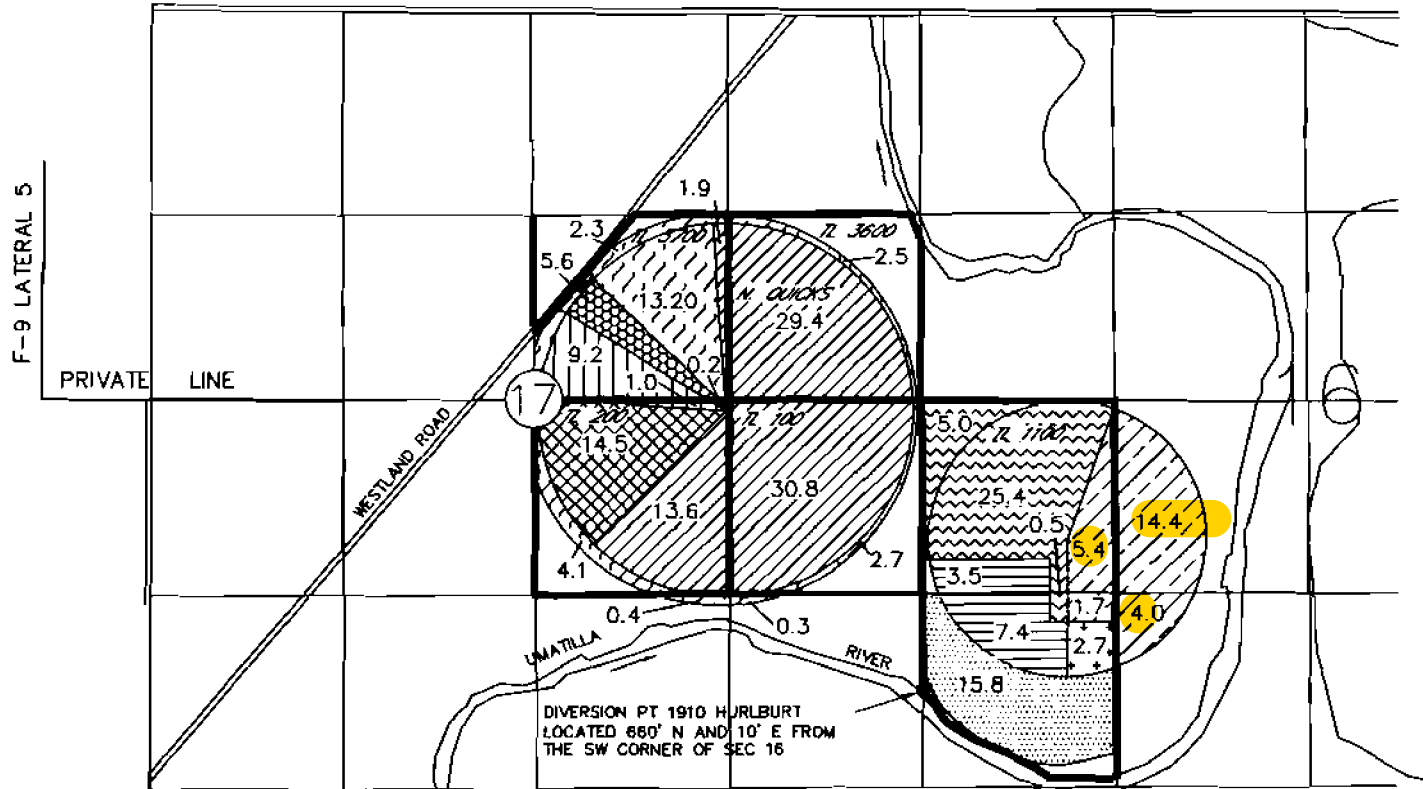
Final Proof Map for Transfer T-8320

4N 28E W.M.

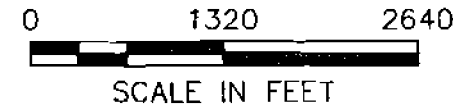
RECEIVED

APR 17 2006

WATER RESOURCES DEPT
SALEM, OREGON



T-8320 c.2554 25.5 ac POU CF and Dim



Primary 76718 - 1907 Westland
Supplemental 79439 (1924 McKay)
80395 (55323) 1979 Quick diminished to supplemental

Primary 76718 - 1907 Westland
Supplemental 79439 - 1924 McKay
2554 - 1910 Hurlburt diminished to supplemental

Diminish 80397 (2554) to
supplemental to 80396 (76718)

Diminish 80395 (55323) to
supplemental to 76799

55323 - 1979 Quick from T-8322
not involved with this transfer

2554 - 1910 Hurlburt from T-8322
not involved with this transfer

Primary 80397 (2554) - 1910 Hurlburt
not involved with this transfer

Primary 76799 - 1961 Westland w/McKay
Supplemental 80395 (55323) - 1979 Quick
not involved with this transfer

Primary 80395 (55323) - 1979 Quick
not involved with this transfer

Primary 76717 (1907 Westland)
Supplemental 79439 - 1924 McKay
Supplemental 80395 (55323) - 1979 Quick
not involved with this transfer

NOTE:
The purpose of this map is to identify the approximate location of the water right. It is not intended to provide information relative to the location of property ownership boundary lines.