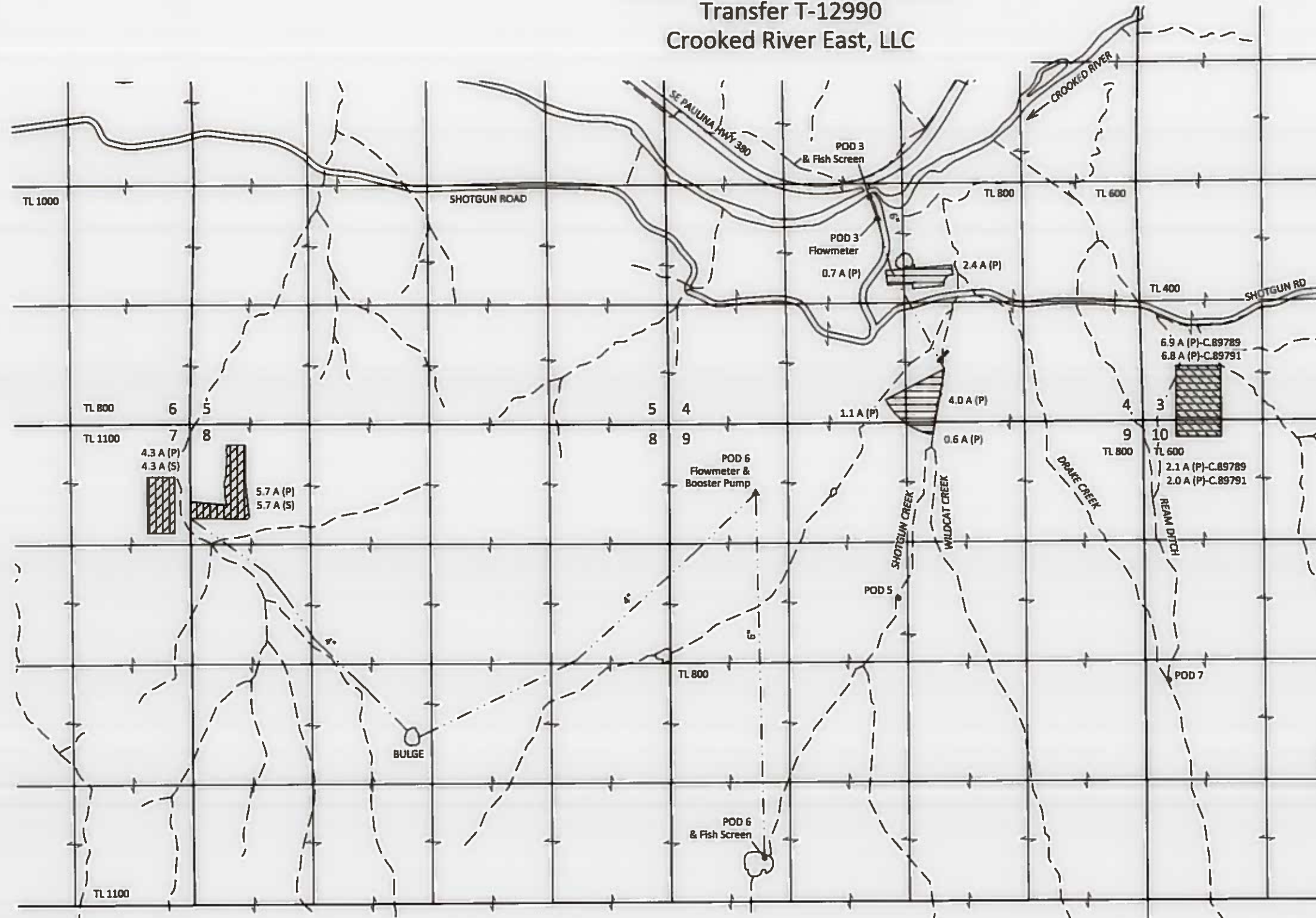


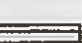





Sections 3, 4, 7, 8, 9, & 10, T17S, R20E, W.M.,
Crook County, Oregon

CLAIM OF BENEFICIAL USE MAP
Transfer T-12990
Crooked River East, LLC

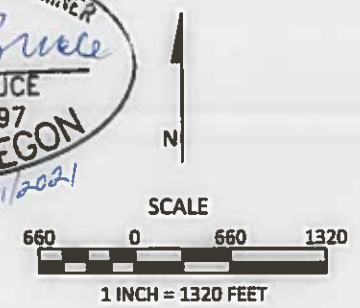


RECEIVED
NOV 20 2020
OWRD

- EXPLANATION**
-  PLACE OF USE - IRRIGATION - 9.0 ACRES (P)
CANCELED CERTIFICATE 89789
PRIORITY: APRIL 9, 1917
 -  PLACE OF USE - IRRIGATION - 10.0 ACRES (P)
CANCELED CERTIFICATE 89790
PRIORITY: 1889
 -  PLACE OF USE - IRRIGATION - 17.6 ACRES (P)
CANCELED CERTIFICATE 89791
PRIORITY: MAY 23, 1961
 -  PLACE OF USE - SUPPLEMENTAL IRRIGATION - 10.0 ACRES (S)
CANCELED CERTIFICATE 89791
PRIORITY: MAY 23, 1961
 -  POINT OF DIVERSION (POD)
 -  FLOWMETER / BOOSTER PUMP
 - (P) PRIMARY ACRES
 - (S) SUPPLEMENTAL ACRES

Site inspection conducted:
July 28, 2020

CERTIFIED WATER RIGHT EXAMINER
439
Steven R. Bruce
STEVEN R. BRUCE
JUNE 13, 1997
STATE OF OREGON
Expires 12/31/2021



November 13, 2020

This map is not intended to provide legal
dimensions or locations of property
ownership lines

Figure 1

SKOOKUM
WATER ASSOCIATES INC
1626 VICTORIAN WAY
EUGENE, OR 97401
(503) 319-8926

POD 3 LOCATION: 140 FT S AND 2270 FT E FROM WEST 1/4 CORNER SECTION 4, T17S, R20E, W.M.
POD 5 LOCATION: 1940 FT S AND 100 FT W FROM NORTH 1/4 CORNER SECTION 9, T17S, R20E, W.M.
POD 6 LOCATION: 2150 FT S AND 1030 FT E FROM WEST 1/4 CORNER SECTION 9, T17S, R20E, W.M.
POD 7 LOCATION: 220 FT S AND 260 FT E FROM WEST 1/4 CORNER SECTION 10, T17S, R20E, W.M.