

MAP FOR

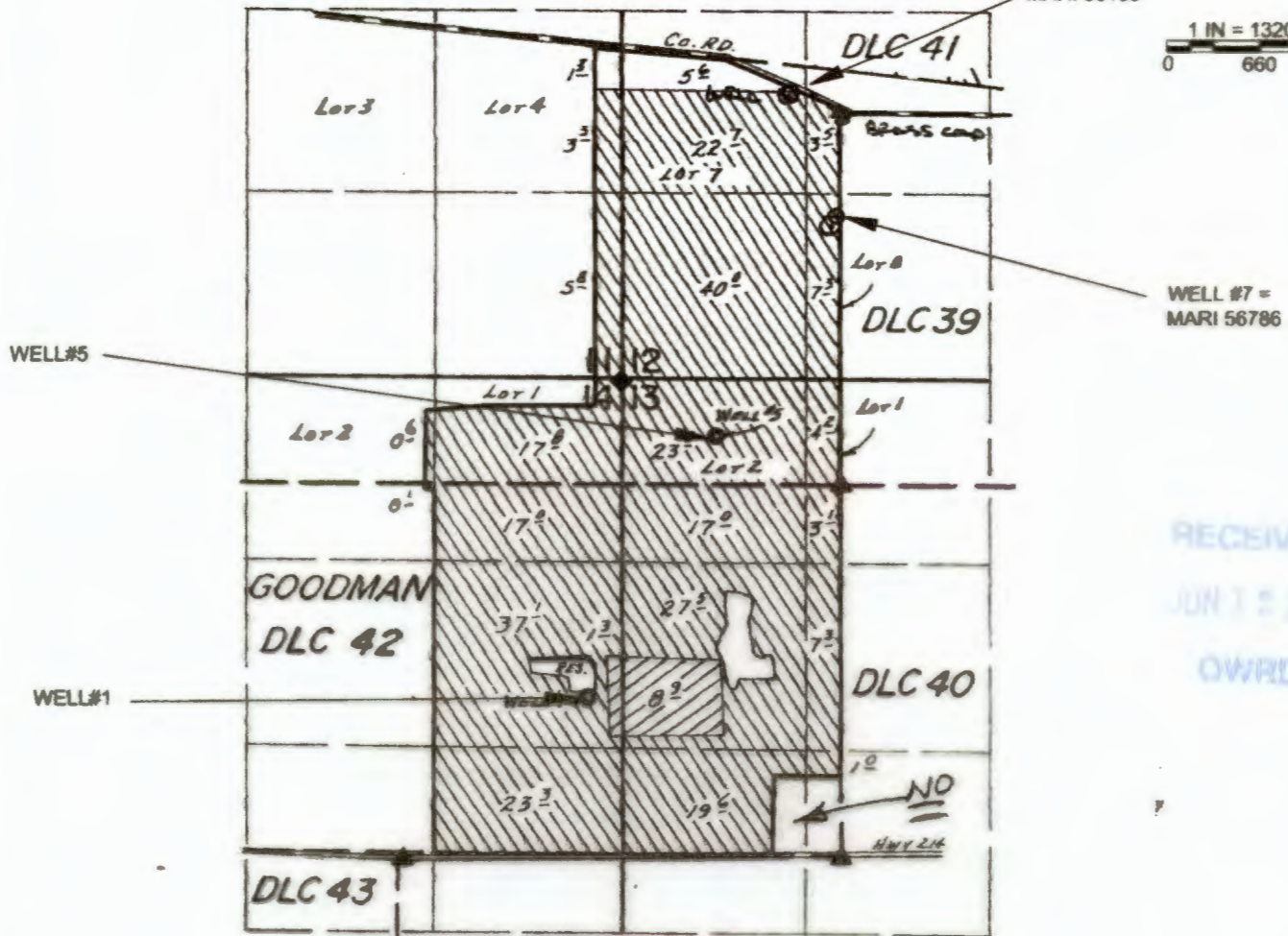
# Claim of Beneficial Use

## Sections 11, 12, 13, & 14, T8S, R2W, Marion County For T-9287





WELL #6 =  
MARI 56199

1 IN = 1320 FT  
0 660 1320



RECEIVED  
JUN 15 2019  
OWRD

WELLS LOC.: #1- 1140' N. & 1700' W., #5- 3000' N. & 880' W., BOTH FROM  
SE COR. GOODMAN DLC 42.

 PRIMARY  
 SUPPLEMENTAL

### LOCATIONS OF POA'S

- WELL #1 1140' N & 1700' W of SE DLC 42 (PER Cert 65869)
- WELL #5 3000' N & 880' W of SE DLC 42 (PER Cert 65869)
- WELL #6 100' N & 350' W of NW DLC 39 (PER T-9287)
- WELL #7 773' S & 10' W of NW DLC 39 (Measured)\*

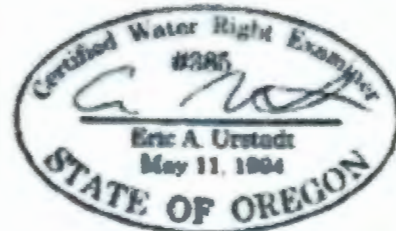
### NOTES:

- THIS MAP IS NOT INTENDED TO PROVIDE LEGAL DIMENSIONS OR LOCATIONS OF PROPERTY OWNERSHIP LINES.
- THE MAJORITY OF THE MAP IS BASED ON THE APPLICATION MAP FOR Cert. 65869; THE MAP WAS VERIFIED BY AERIAL PHOTOGRAPHS, THE GLO MAP, AND THE TAX ASSESSOR MAPS.
- \*THE EXISTING COORDINATES FOR WELL #7 ARE CONFLICTED, SO THESE COORDINATES WERE MEASURED.
- CONVEYANCE STRUCTURES ARE NOT REQUIRED.
- METERS ARE LOCATED AT THE WELLS FOR WELLS 6 AND 7.



### LEGEND

- ▲ DONATION LAND CLAIM (DLC) CORNER
- ◆ SECTION CORNER
- POINTS OF APPROPRIATION - WELLS



MAP BY:  
**ASPEN RURAL LAND CONSULTING**  
 ERIC URSTADT, PE, PLS  
 971-250-1520  
 May 2019  
 D&DFrank1C