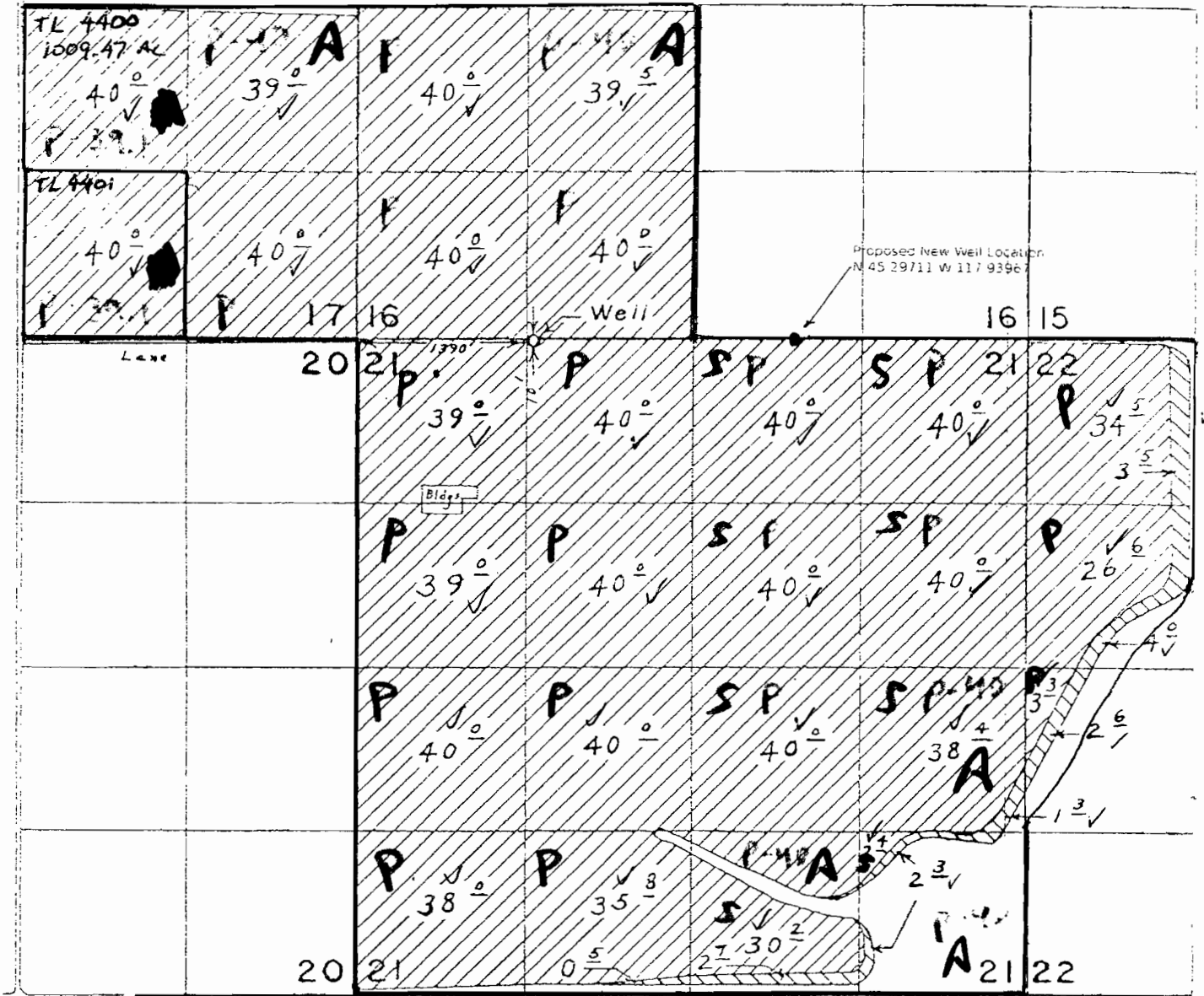


T.3 S. R.39 E. W.M.



Change      Primary  
Supplemental to Primary      New Alternate POA  
For All Land

FINAL PROOF SURVEY

UNDER

P - primary is cut 28028

S - supplemental is cut 28028

Application No. G-4048 Permit No. G-3470  
IN NAME OF

Scale 1"=1320'

ANDREWS & SONS RANCHES

RECEIVED

Surveyed Sept. 12, 1974, by L. E. Gould.

NOV 07 2005

T.10026

RECEIVED  
MAR 01 2006  
WATER RESOURCES DEPT  
SALEM, OREGON

WATER RESOURCES DEPT  
SALEM, OREGON