

# APPLICATION FOR TRANSFER

Change in Place of Use – Certificate 54510  
 IN THE NAME OF MURPHY ELECTRIC IRRIGATION CO.

SECTIONS 19 & 20, TOWNSHIP 37 SOUTH, RANGE 5 WEST, W.M.

JOSEPHINE COUNTY OREGON

RECEIVED

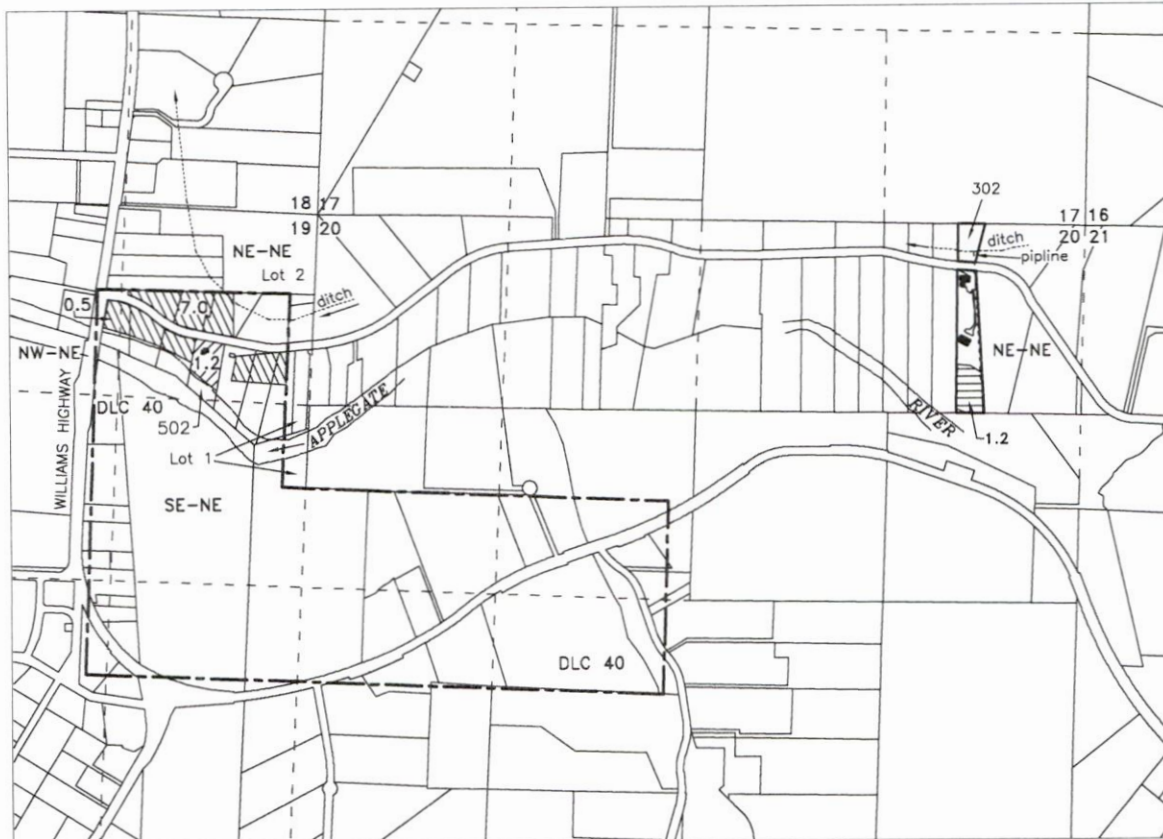
MAR 11 2020

JOCO - PLANNING

RECEIVED


JUL 23 2020

OWRD




### Legend

Points of Diversion – #1 SE/NW Section 21, T37S, R5W, WM: 1550 feet South & 2200 feet East from NW corner Section 21: #2 SW/SW Section 6, T38S, R4W, WM: Northside Ditch – 950 feet North & 200 feet East from SW corner Section 6

 FROM: 1.2 Acres

 TO: 1.2 Acres

 \*REMAINING RIGHT – 7.5 Acres (\*Interpretation of Murphy Electric Irrigation, Inc. records, Inchoate Map, Permit Map S-23592 and current Google aerial photos. Previous mapping appears to have included approximately 0.5 Acres in the NW-NE as being within NE-NE of Sec. 19)

**13498**



Base map Josephine County GIS Tax Lots over Inchoate Map, Oregon Map aerial photo & 6-29-18 Google aerial photo for assumed best fit

### Scale

1 inch = 1320 feet



**JORDAN ENGINEERING**  
 460 JORDAN LANE  
 ROSEBURG, OR 97471  
 (541) 673-1931

This map is not intended to provide legal dimensions or locations of property ownership lines

Revised 2/13/2020 – n.e.d.