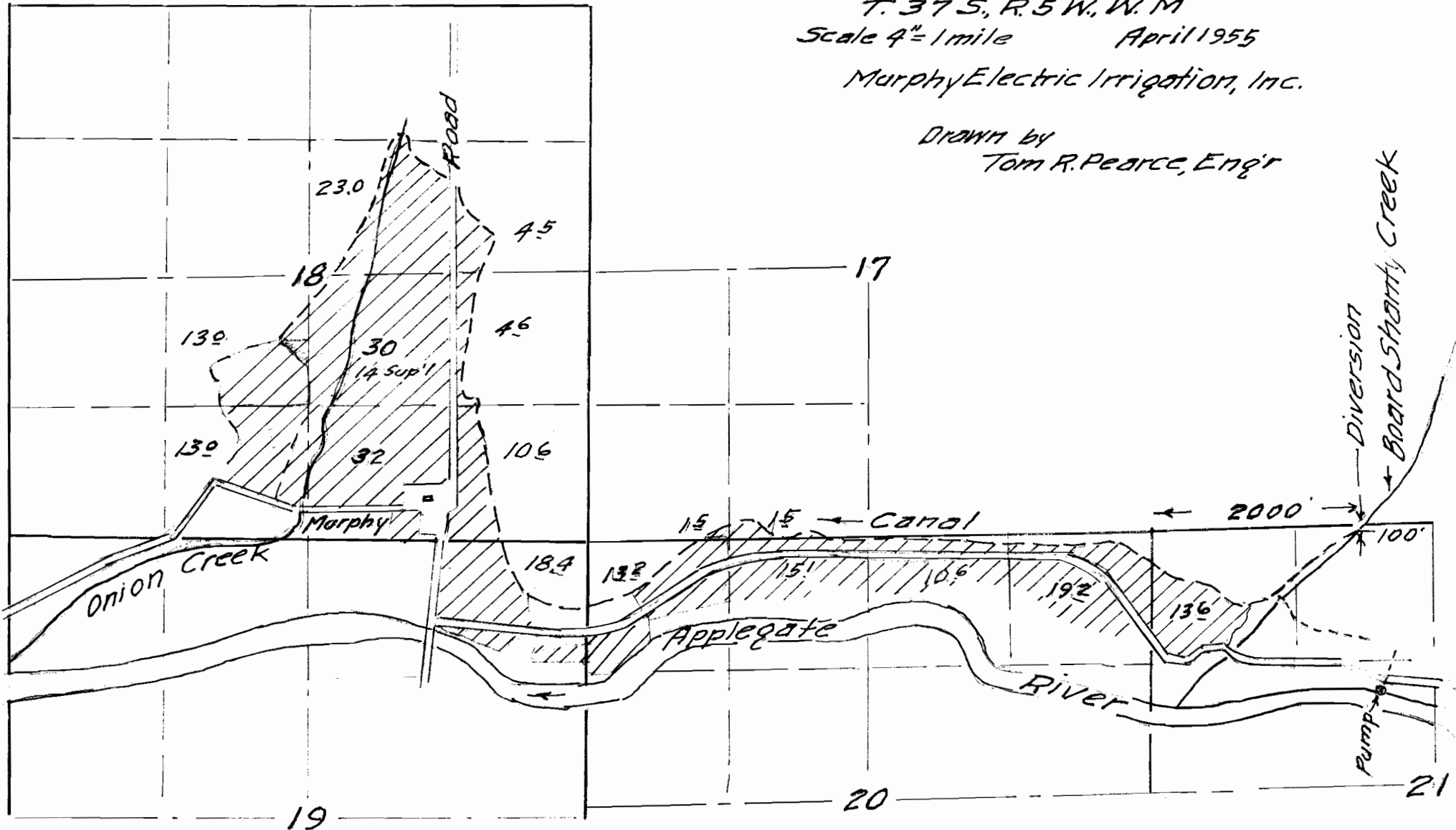


T. 37 S., R. 5 W., W. M
 Scale 4" = 1 mile April 1955
 Murphy Electric Irrigation, Inc.

Drawn by
 Tom R. Pearce, Eng'r



Application No. 29945
 Permit No. 23592

APPLICATION FOR TRANSFER

RECEIVED

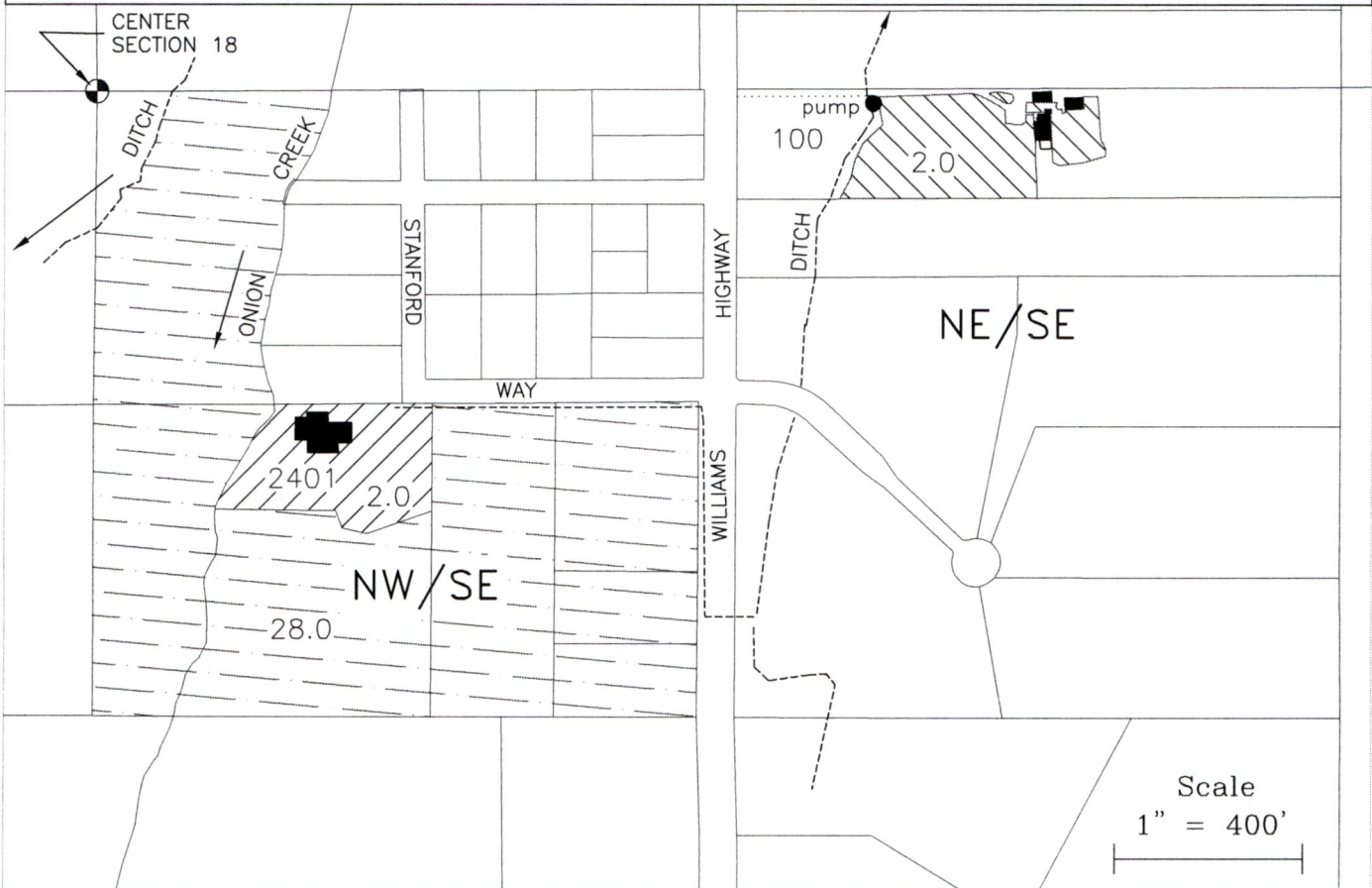
FEB 13 2019

CHANGE IN PLACE OF USE
CERTIFICATE 54521

OWRD

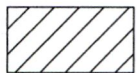
IN THE NAME OF: MURPHY ELECTRIC IRRIGATION, INC
SECTION 18, TOWNSHIP 37S, RANGE 5W, W.M.
JOSEPHINE COUNTY OREGON

ASSESSOR MAP #
T37S R5W Sec. 18D



POD-1 Murphy Electric Ditch - SE/NW, Section 21, T37S R5W, WM. 1550 feet South & 2200 feet East from the NW Corner Section 21 (per certificate)

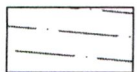
POD-2 Northside Ditch - SW/SW, Section 6, T38S R4W, WM. 950 feet North & 200 feet East from the SW Corner Section 6 (per certificate)



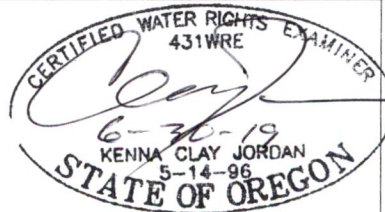
FROM: 2.0 AC. - TL-2401
Bowden Rev. Living Trust
2.0 Ac. Certificates 8718 & 27462
to be canceled



TO: 2.0 AC. - TL-100
Jonathon & Jennifer Catlett



Assumed location of remaining right - 28 AC.
Murphy Electric Irrigation, Inc. - Chuck Olinghouse, President



Base map Josephine County GIS tax lots over Oregon Map Aerial Photo downloaded 10-6-2016 & Google aerial photo dtd 5-27-2016 oriented to survey map CS-173-69

This map is not intended to provide legal dimensions or locations of property ownership lines

JORDAN ENGINEERING
460 JORDAN LANE
ROSEBURG, OR 97471
(541) 673-1931
drawn 12/5/2018 n.e.d.

13124

RECEIVED

FEB 13 2019

OWRD

SEE MAP 37 5 18 A

37-05-18-DO

C. 18

2300
5.25 Ac.

1890
3' STREET PLUG
0.03 Ac.

1990 0.03 ac
3' STREET PLUG

1900
0.80 Ac.

1800
0.50 Ac.

1300
0.50 Ac.

1200
0.50 Ac.

400
0.50 Ac.

500
0.50 Ac.

100
6.80 Ac.

2000
0.85 Ac.

2100
1.00 Ac.

2200
0.80 Ac.

1700
0.50 Ac.

1400
0.50 Ac.

1100
0.50 Ac.

1600
0.50 Ac.

1500
0.50 Ac.

1000
0.50 Ac.

800
0.50 Ac.

900
0.50 Ac.

602
0.25 Ac.

600
0.50 Ac.

601
0.25 Ac.

800
0.50 Ac.

900
0.50 Ac.

602
0.25 Ac.

600
0.50 Ac.

601
0.25 Ac.

800
0.50 Ac.

900
0.50 Ac.

200
4.85 Ac.

301
4.79 Ac.

2401
2.16 Ac.

2402
4.98 Ac.

2600
2.46 Ac.

2602
1.05 Ac.

2603
1.12 Ac.

2700
6.01 Ac.

2800
19.50 Ac.

2900
0.29 Ac.

2901
0.32 Ac.

3000

305
6.07 Ac.

3400
5.04 Ac.

3403
4.85 Ac.

3502

3502

HARTMAN

VILLAGE SUB

JACKSONVILLE HIGHWAY (WILLIAMS)

5

PARTITION

EAST STANFORD

HARTMAN

CREEK

CANAAN STREET

WAY

STANFORD

HARTMAN

SEE C.S. 116-61

C.S. 118-89

C.S. 170-63

C.S. 170-69

C.S. 170-69

C.S. 170-69

C.S. 170-69

C.S. 170-69

C.S. 170-69

C.S. 170-69

C.S. 170-69

C.S. 170-69

C.S. 170-69

13124

Assessor's Map 37-05-18-D0 tl 2401

RECEIVED

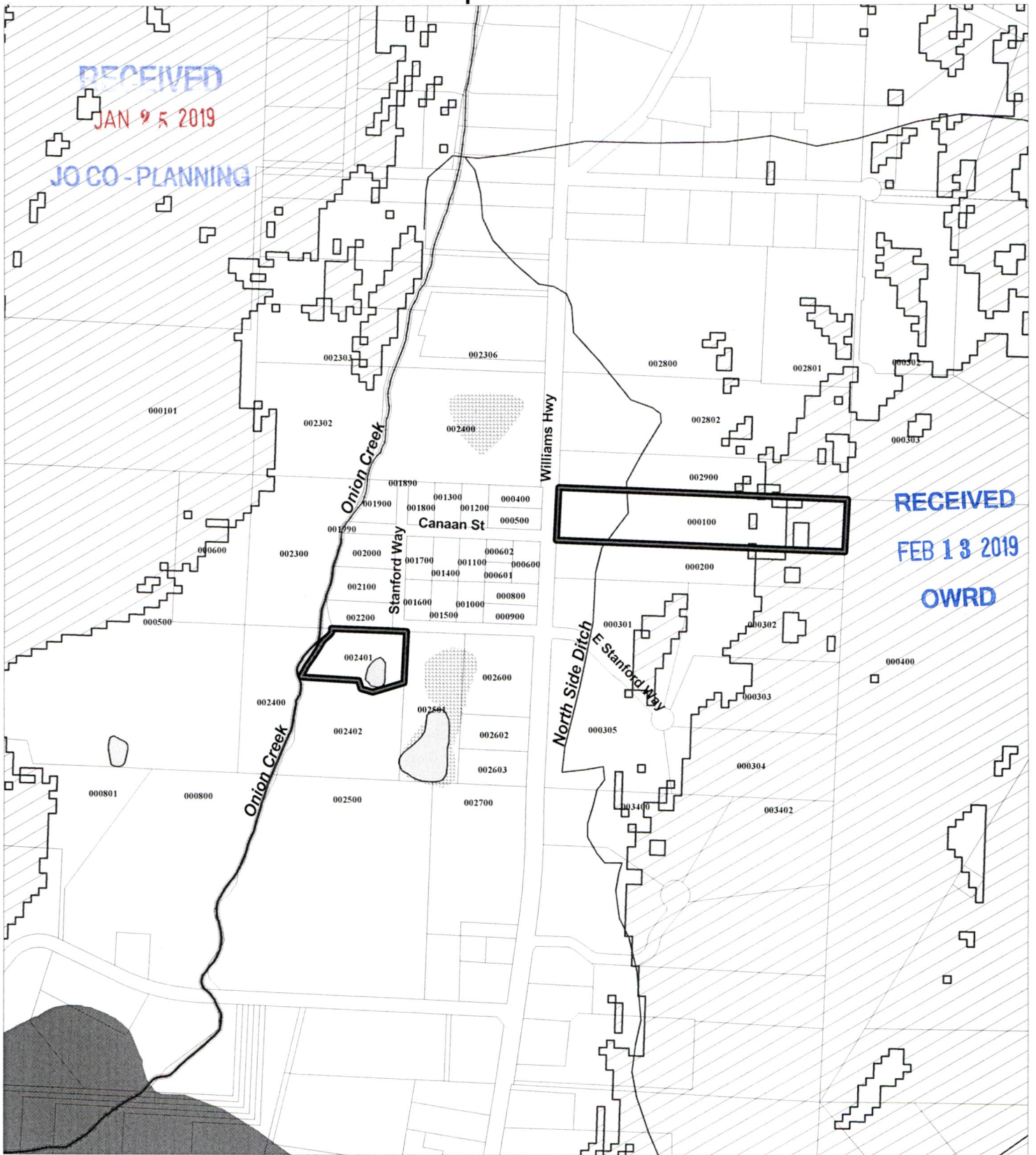
JAN 9 5 2019

JO CO - PLANNING

RECEIVED

FEB 13 2019

OWRD



Legend

- Slope > 15 %
- Taxlots
- Water (line)**
 - Class 1
 - Class 2
- Water (polygon)**
 - Water Bodies
 - Wetlands (Line)
 - Wetlands (polygon)

600 0 600 1200 Feet



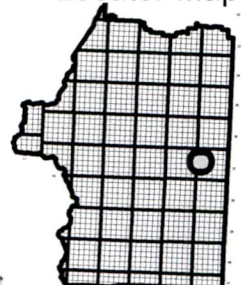
The information on this map is furnished for general interest purposes only. This information is provided without warranties of any kind, express or implied, and it should not be used to support any purchase or other investment. Neither Josephine County, Cave Junction, nor Grants Pass will accept responsibility for any errors or inaccuracies in the depicted information.



Scale
1:7105



Locator Map



13124