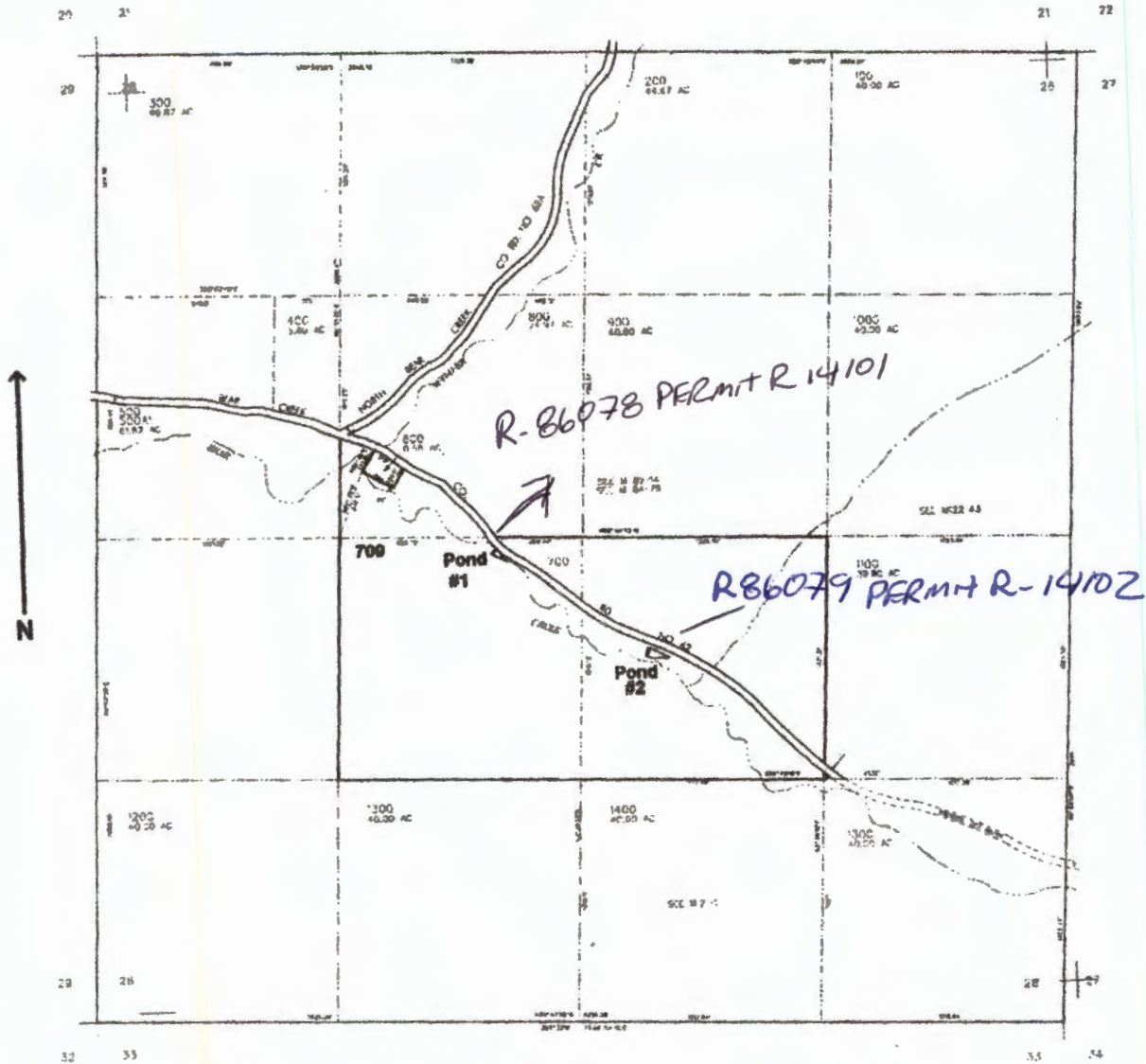


SEC. 28 T.21S. R. 4W. W.M.
DOUGLAS COUNTY
Scale: 1" = 1000'



Pond #1: Dam is located 500 ft. W. and 76 ft. S.) from the center of Sec. 28
Pond #2: Dam is located 350 ft. E. and 825 ft. S. }

RECEIVED

SEP 09 2004

WATER RESOURCES D
SALEM, OREGON

app no. R 86078

Permit no. R-14101

RECEIVED

OCT 19 2010

OWRD