

MAP FOR

# Claim of Beneficial Use

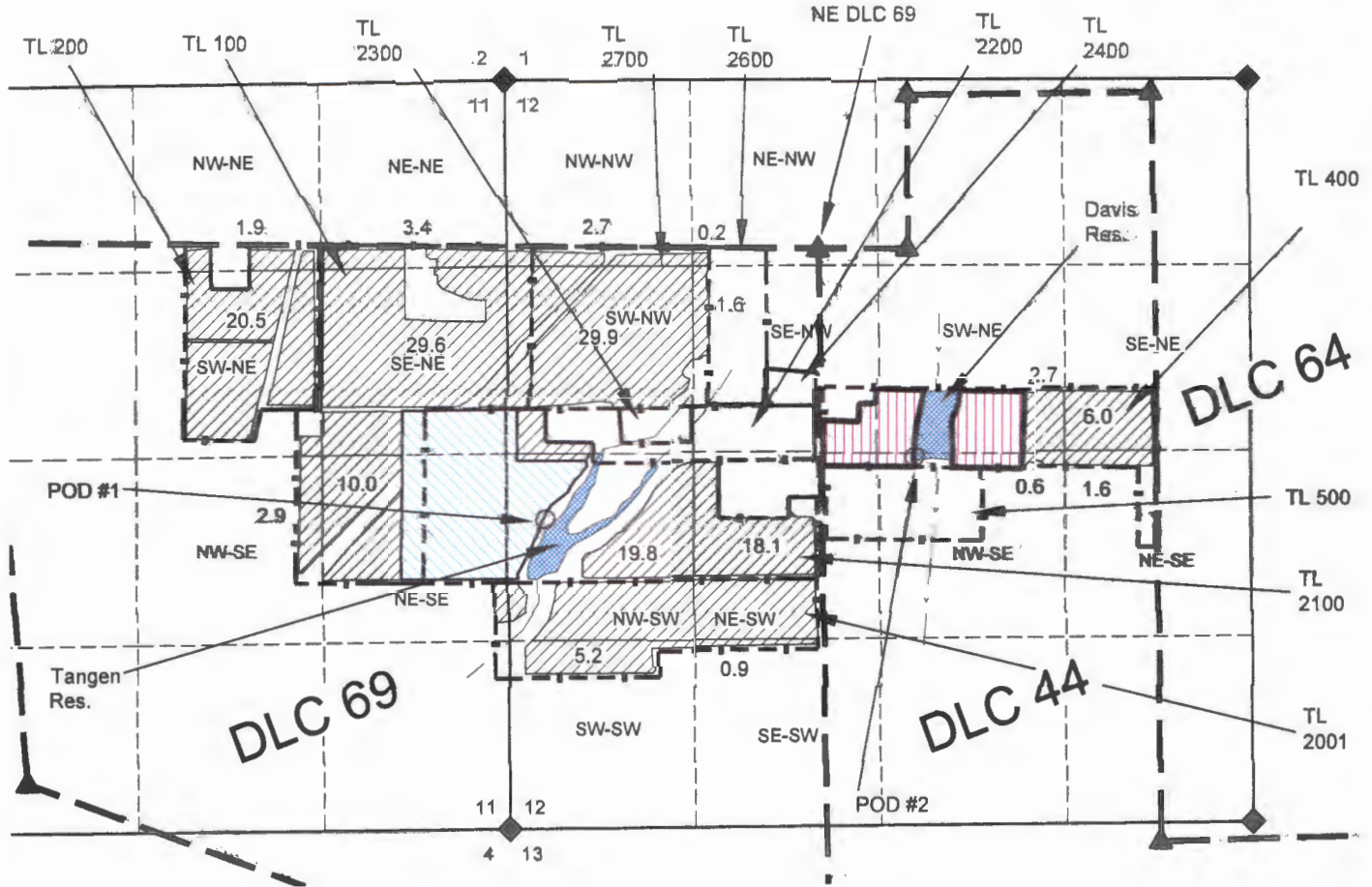
S11 & S12, T3S, R3W, YAMHILL COUNTY  
 Appl S-88358, Permit S-55066

RECEIVED  
 FEB 22 2021

OWRD



1 IN = 1320 FT  
 0 660 1320



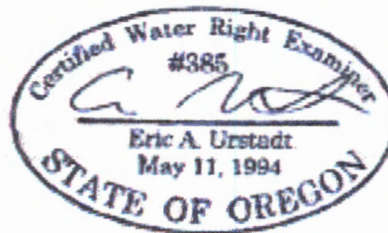
**NOTES:**

- THIS MAP IS NOT INTENDED TO PROVIDE LEGAL DIMENSIONS OR LOCATIONS OF PROPERTY OWNERSHIP LINES.
- PROPERTY LINES AND QUARTER-QUARTER LINES ARE BASED ON THE TAX ASSESSOR MAP FOR SECTIONS 1, 2, 11, & 12, T3S, R3W. PRIOR IRRIGATION AREAS ARE BASED ON CERTIFICATE MAPS. IRRIGATION FOR THIS CLAIM IS BASED ON A MAY 2019 GOOGLE AERIAL PHOTO
- FISH SCREEN AND METERS ARE LOCATED AT THE POINTS OF DIVERSIONS
- WATER CONVEYANCE LINES ARE WITHIN THE PROPERTIES AND THEREFORE ARE NOT SHOWN.

LOCATIONS OF POINTS OF DIVERSION (POD):  
 POD #1 (TANGEN RES.) 1900' S & 1930' W  
 POD #2 (DAVIS RES.) 1460' S & 700' E  
 ALL FROM NE CORNER DLC 69.

**LEGEND**

- ◆ ▲ DONATION LAND CLAIM (DLC) CORNER
- SECTION CORNER
- POINT OF DIVERSION
- STREAM OR SURFACE DRAINAGE
- TAX LOT LINE
- SECTION LINE
- QUARTER-QUARTER LINE
- DLC LINES (NOT SHOWN)
- IRRIGATION PERMIT S-55066
- IRRIGATION CERT. 22285
- IRRIGATION CERT. 22119



MAP BY:  
**ASPEN RURAL LAND CONSULTING**  
 ERIC URSTADT, PE, PLS  
 971-250-1520  
 Jan 2021  
 FlyingFeather2J