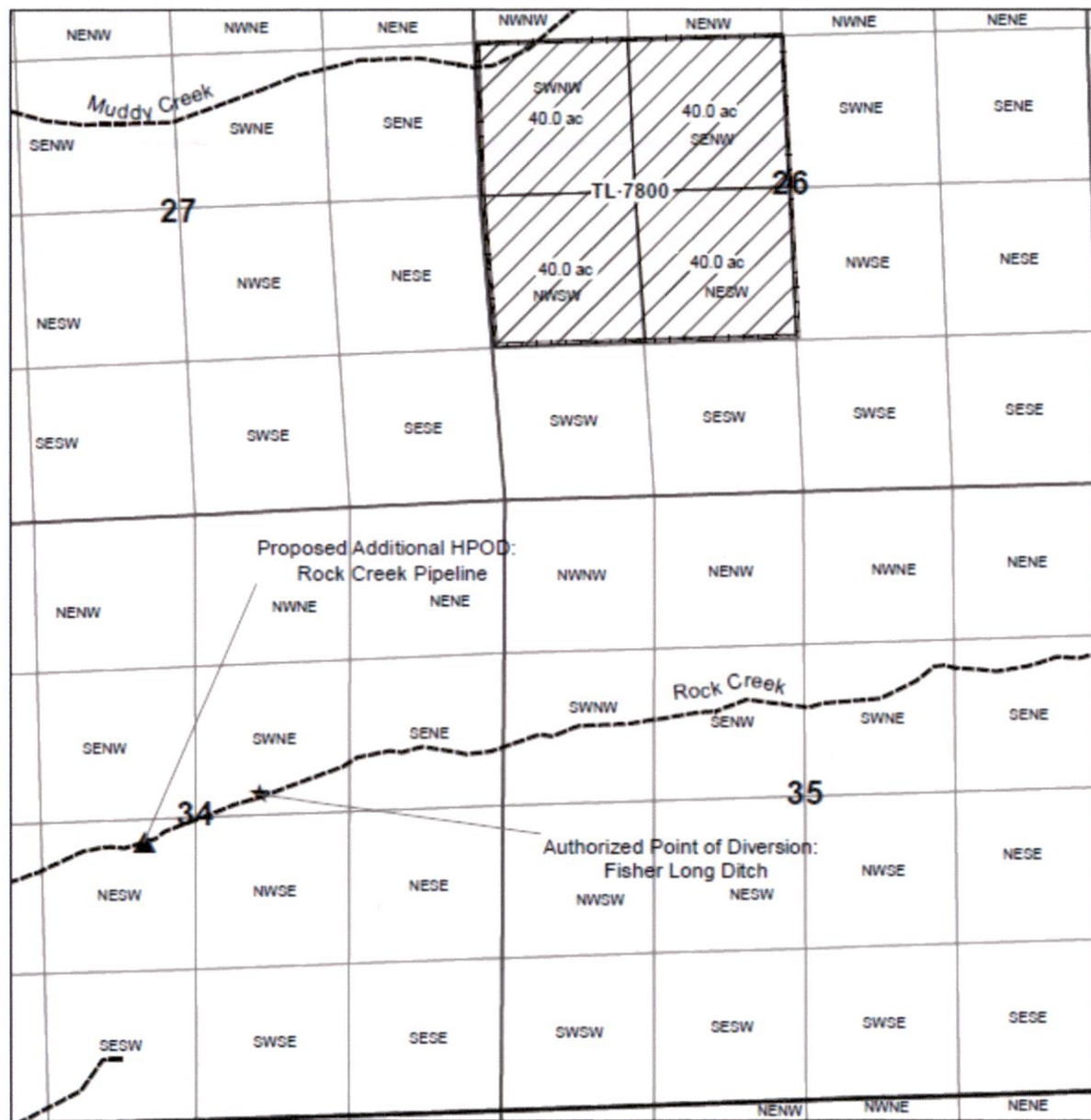


T.7S, R. 38E



Map to accompany an additional
Historic Point of Diversion
for
Arlene Dethloff

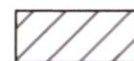


Scale: 1" = 1320'

RECEIVED

AUG 04 2020

OWRD



C-68433
160.0 ac - 1872



Proposed Additional HPOD:
Rock Creek Pipeline:
3040' S & 3102' W
from the NE corn. of Sect. 34



Authorized Point of Diversion:
Fisher Long Ditch:
2500' S & 2100' W
from the NE corn. of Sect. 34
(Distances from HB311 -
Cert does not give
metes and bounds)



Creeks

RECEIVED

AUG 20 2020

OWRD

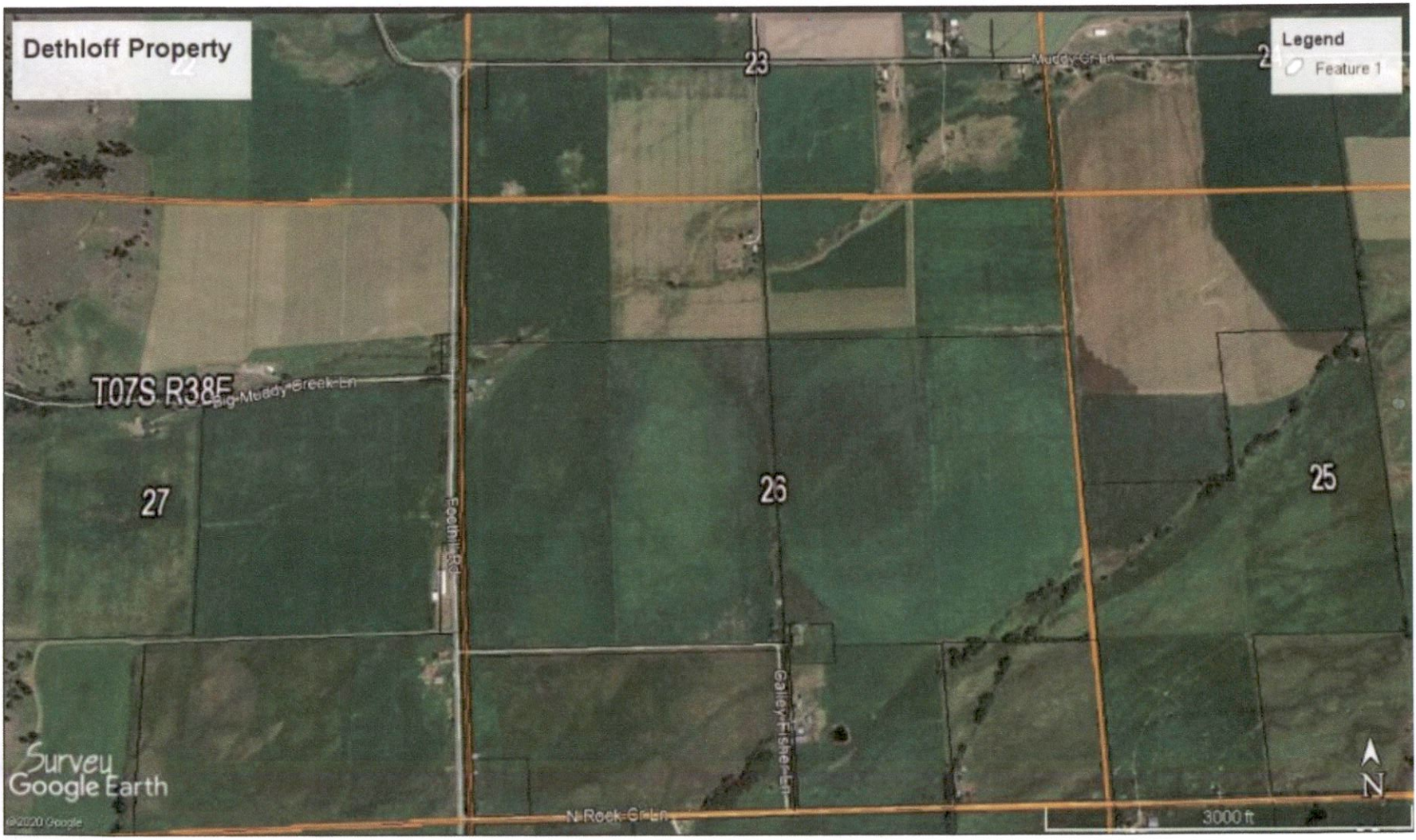
13513

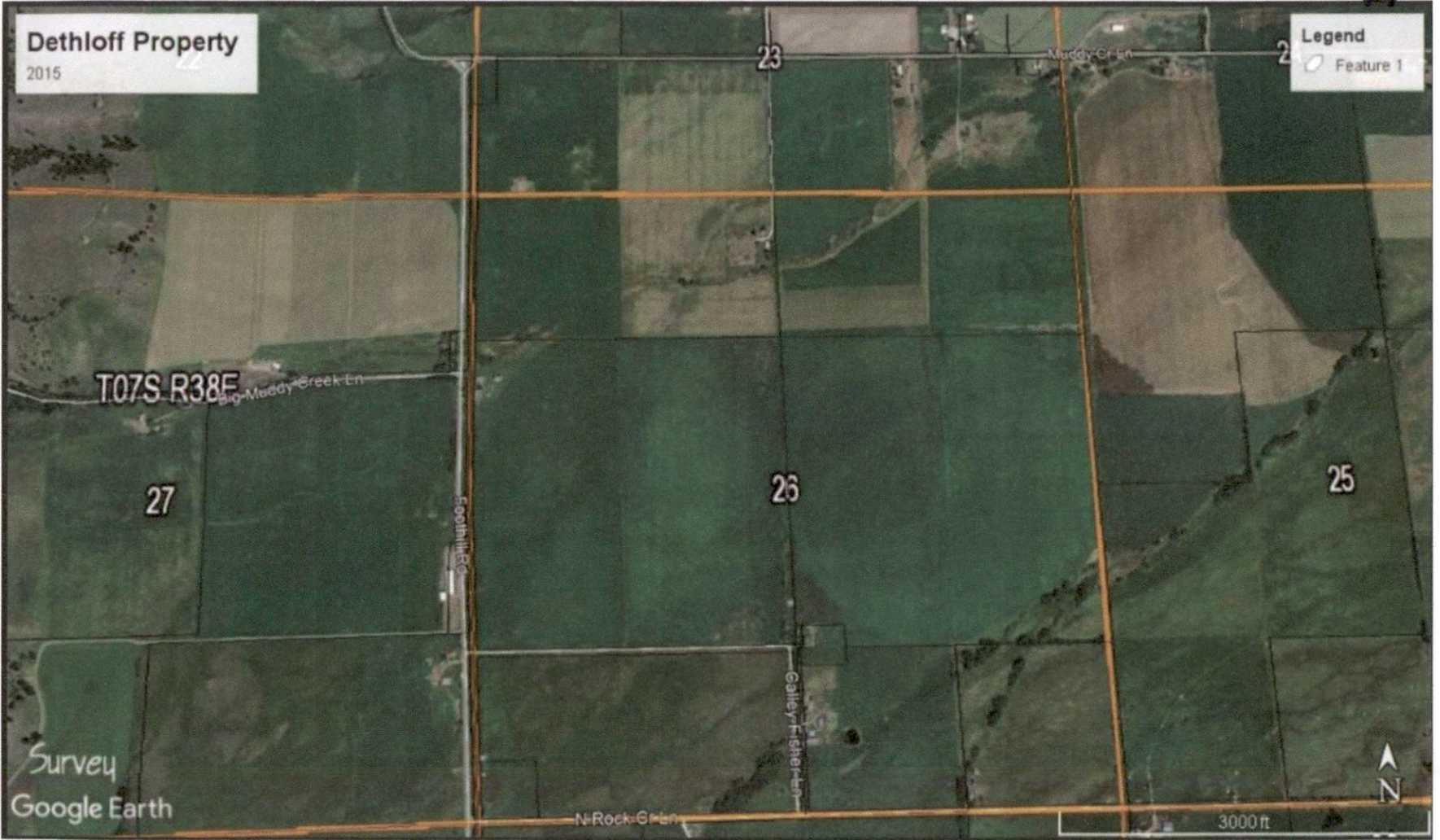
19513

RECEIVED
AUG 04 2020
OWRD

RECEIVED
AUG 20 2020
OWRD

19513





Dethloff Property

2015

Legend

Feature 1

T07S R38E

27

26

25

23

Survey
Google Earth

3000 ft



RECEIVED
AUG 20 2020
OWRD

RECEIVED
AUG 04 2020
OWRD

13513

13513