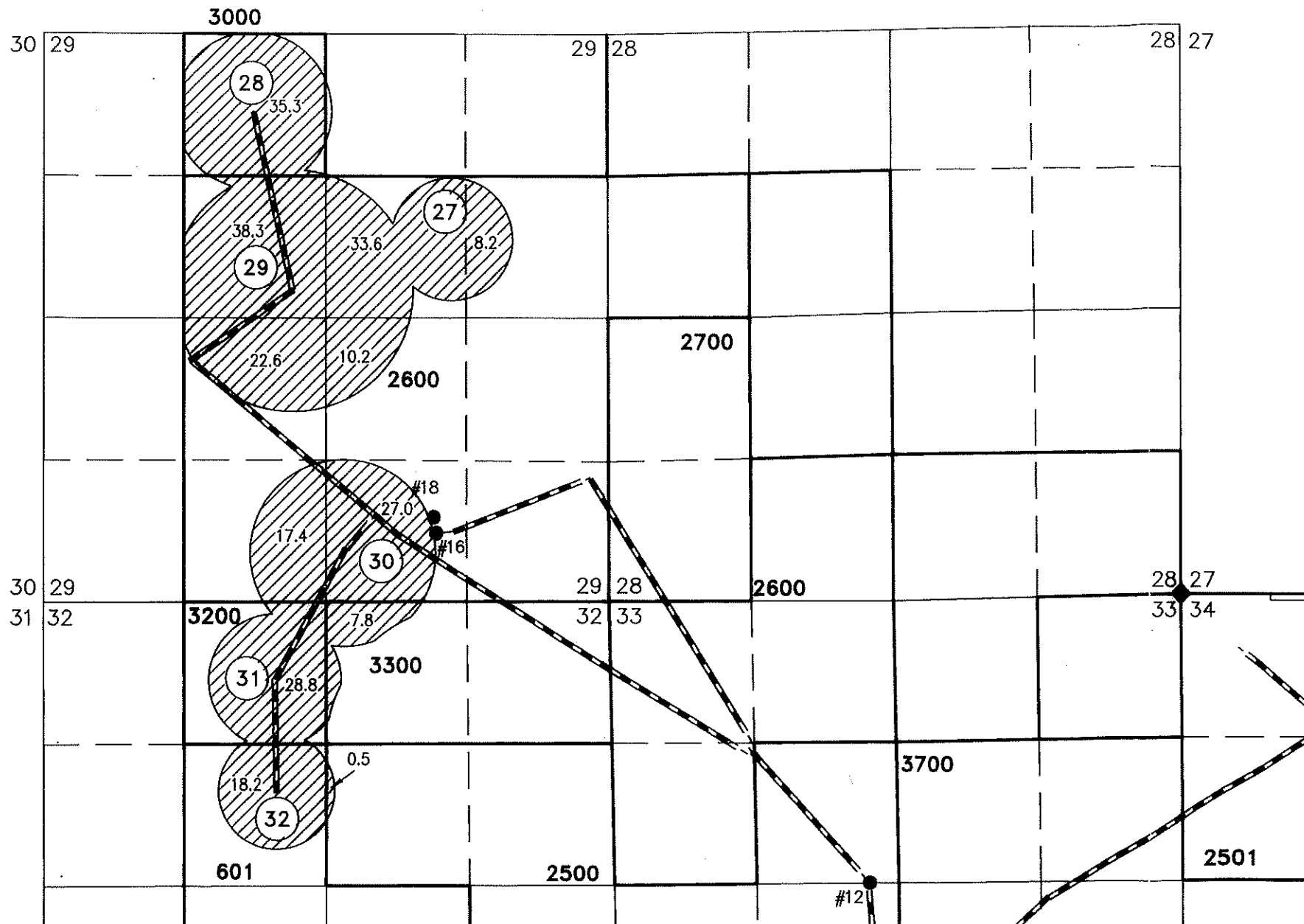





# FINAL PROOF MAP

## TO ADD POINTS OF APPROPRIATION FOR PERMIT APPLICATION G-17561

SECTIONS 29 & 32, TOWNSHIP 25 SOUTH, RANGE 30 EAST, W.M.  
TAX LOTS: 601, 2500, 2600, 3000, 3200, & 3300



- #7  
WELL #7 (HARN 51272) LOCATED 4725' SOUTH & 1877' EAST FROM THE NW CORNER SECTION 34. FLOW METER IS LOCATED 6 FEET SW FROM WELL.
- #10  
WELL #10 (HARN 51765) LOCATED 6310' SOUTH & 415' EAST FROM THE NW CORNER SECTION 34. FLOW METER IS LOCATED 7 FEET SOUTH FROM WELL.
- #11  
WELL #11 (HARN 51760) LOCATED 6340' SOUTH & 330' EAST FROM THE NW CORNER SECTION 34. FLOW METER IS LOCATED 7 FEET SOUTH FROM WELL.
- #12  
WELL #12 (HARN 51817) LOCATED 2690' SOUTH & 2890' WEST FROM THE NE CORNER SECTION 33. FLOW METER IS LOCATED 6 FEET WEST FROM WELL.
- #13  
WELL #13 (HARN 51445) LOCATED 6415' SOUTH & 2745' WEST FROM THE NE CORNER SECTION 33. FLOW METER IS LOCATED 6 FEET NORTH FROM WELL.
- #14  
WELL #14 (HARN 51871) LOCATED 4314' SOUTH & 870' WEST FROM THE NE CORNER SECTION 33. FLOW METER IS LOCATED 6 FEET SOUTH FROM WELL.
- #15  
WELL #15 (HARN 51970) LOCATED 4314' SOUTH & 920' WEST FROM THE NE CORNER SECTION 33. FLOW METER IS LOCATED 7 FEET SOUTH FROM WELL.
- #16  
WELL #16 (HARN 52121) LOCATED 635' NORTH & 1605' WEST FROM THE SE CORNER OF SECTION 29. FLOW METER IS LOCATED 6 FEET SOUTH FROM WELL.
- #17  
WELL #17 (HARN 52154) LOCATED 6300' SOUTH & 440' EAST FROM THE NW CORNER SECTION 34. FLOW METER IS LOCATED 7 FEET WEST FROM WELL.
- #18  
WELL #18 (HARN 52170) LOCATED 785' NORTH & 1630' WEST FROM THE SE CORNER OF SECTION 29. FLOW METER IS LOCATED 6 FEET EAST FROM WELL.


 BURIED 6 OR 8 INCH STEEL PIPE  
 OWNER'S PIVOT NUMBER  
 247.9 ACRES OF 355.9 ACRES 'IR' FROM PERMIT APPLICATION G-17561, AS SHOWN.

THIS MAP IS FOR THE PURPOSE OF LOCATING A WATER RIGHT ONLY AND HAS NO INTENT TO PROVIDE LEGAL DIMENSIONS OR THE LOCATION OF PROPERTY LINES

1156  
(1083)



RENEWAL DATE: 12/31/2018

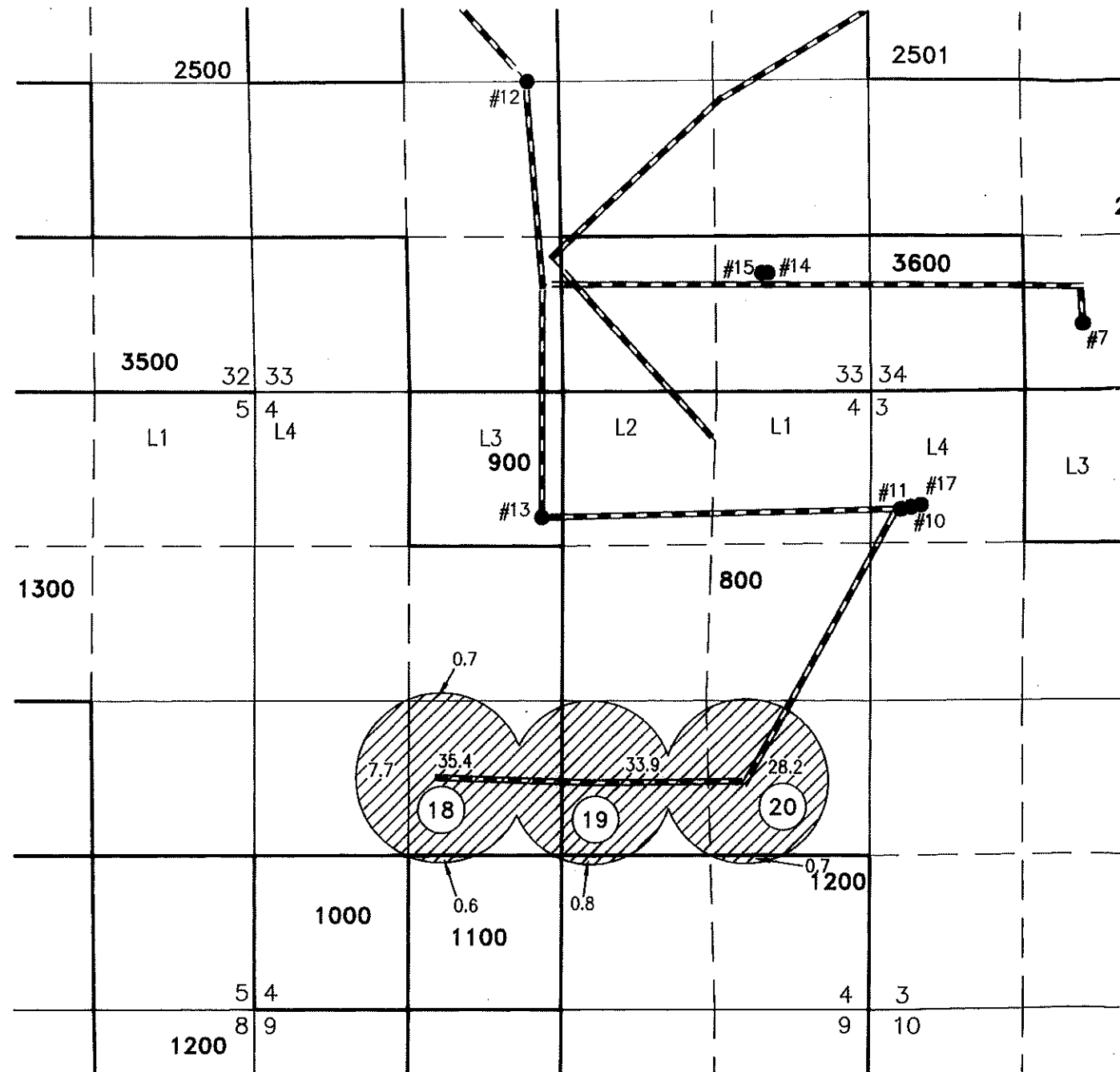
PREPARED FOR: ANDY ROOT 524 HWY 20N HINES, OR 97738	PREPARED BY:  ALL POINTS ENGINEERING AND SURVEYING, INC. P.O. BOX 767 TERREBONNE, OR 97760 (541) 548-5833 www.APEandS.com
--	---

1156 (1083)

# FINAL PROOF MAP

TO ADD POINTS OF APPROPRIATION  
FOR PERMIT APPLICATION G-17561

SECTION 4, TOWNSHIP 26 SOUTH, RANGE 30 EAST, W.M.  
TAX LOTS: 800, 1100, & 1200

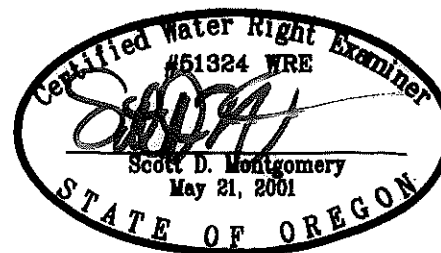


- #7  
WELL #7 (HARN 51272) LOCATED 4725' SOUTH & 1877' EAST FROM THE NW CORNER SECTION 34. FLOW METER IS LOCATED 6 FEET SW FROM WELL.
- #10  
WELL #10 (HARN 51765) LOCATED 6310' SOUTH & 415' EAST FROM THE NW CORNER SECTION 34. FLOW METER IS LOCATED 7 FEET SOUTH FROM WELL.
- #11  
WELL #11 (HARN 51760) LOCATED 6340' SOUTH & 330' EAST FROM THE NW CORNER SECTION 34. FLOW METER IS LOCATED 7 FEET SOUTH FROM WELL.
- #12  
WELL #12 (HARN 51817) LOCATED 2690' SOUTH & 2890' WEST FROM THE NE CORNER SECTION 33. FLOW METER IS LOCATED 6 FEET WEST FROM WELL.
- #13  
WELL #13 (HARN 51445) LOCATED 6415' SOUTH & 2745' WEST FROM THE NE CORNER SECTION 33. FLOW METER IS LOCATED 6 FEET NORTH FROM WELL.
- #14  
WELL #14 (HARN 51871) LOCATED 4314' SOUTH & 870' WEST FROM THE NE CORNER SECTION 33. FLOW METER IS LOCATED 6 FEET SOUTH FROM WELL.
- #15  
WELL #15 (HARN 51970) LOCATED 4314' SOUTH & 920' WEST FROM THE NE CORNER SECTION 33. FLOW METER IS LOCATED 7 FEET SOUTH FROM WELL.
- #16  
WELL #16 (HARN 52121) LOCATED 635' NORTH & 1605' WEST FROM THE SE CORNER OF SECTION 29. FLOW METER IS LOCATED 6 FEET SOUTH FROM WELL.
- #17  
WELL #17 (HARN 52154) LOCATED 6300' SOUTH & 440' EAST FROM THE NW CORNER SECTION 34. FLOW METER IS LOCATED 7 FEET WEST FROM WELL.
- #18  
WELL #18 (HARN 52170) LOCATED 785' NORTH & 1630' WEST FROM THE SE CORNER OF SECTION 29. FLOW METER IS LOCATED 6 FEET EAST FROM WELL.

- BURIED 6 OR 8 INCH STEEL PIPE
- ▨ 108.0 ACRES OF 355.9 ACRES 'IR' FROM PERMIT APPLICATION G-17561, AS SHOWN.
- ① OWNER'S PIVOT NUMBER

THIS MAP IS FOR THE PURPOSE OF LOCATING A WATER RIGHT ONLY AND HAS NO INTENT TO PROVIDE LEGAL DIMENSIONS OR THE LOCATION OF PROPERTY LINES

1156  
(243)



RENEWAL DATE: 12/31/2018

PREPARED FOR:

ANDY ROOT  
524 HWY 20N  
HINES, OR 97738

PREPARED BY:



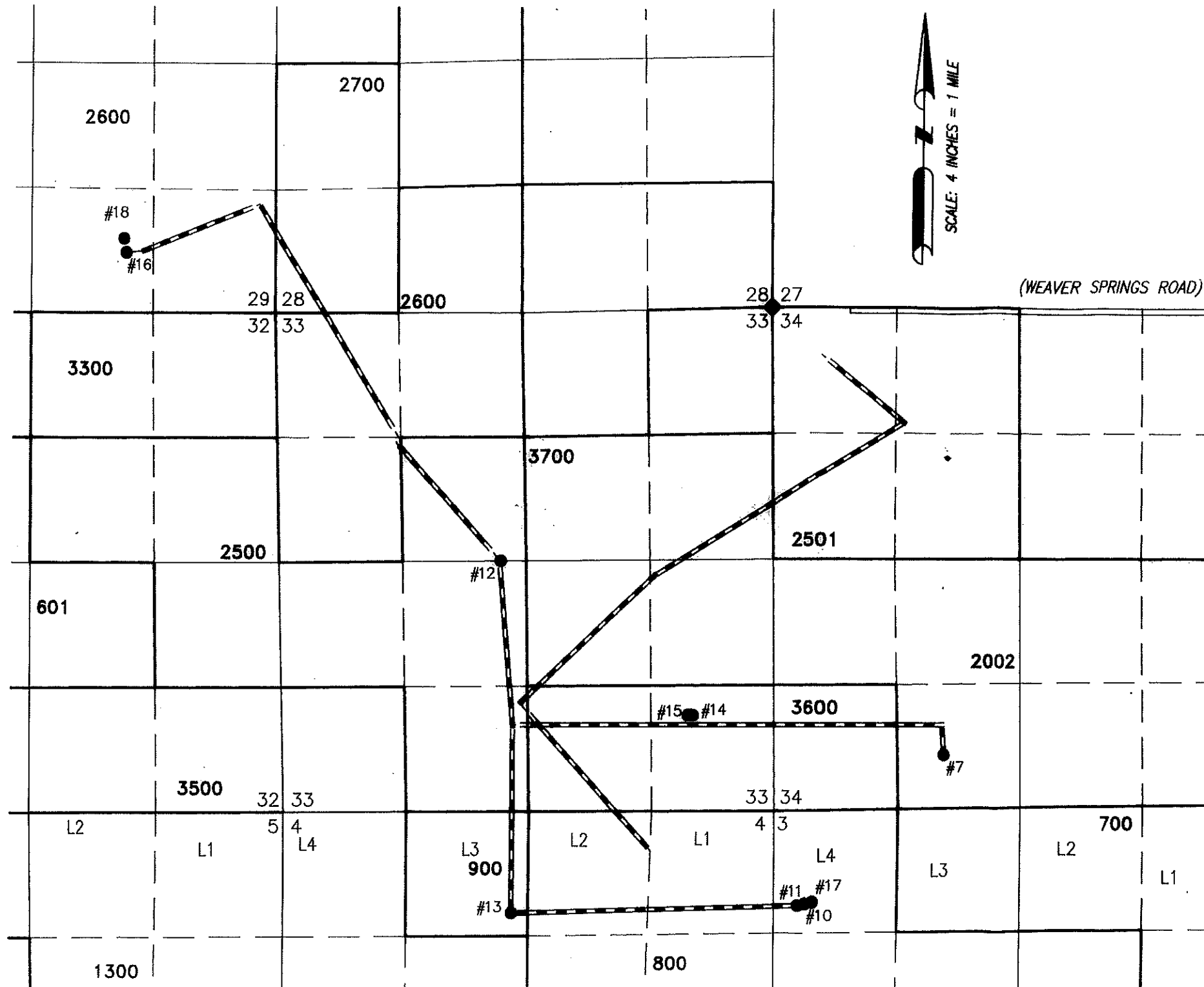
ALL POINTS ENGINEERING AND SURVEYING, INC.  
P.O. BOX 767 TERREBONNE, OR 97760  
(541) 548-5833 www.APEandS.com

1156 (2043)

# FINAL PROOF MAP

TO ADD POINTS OF APPROPRIATION  
FOR PERMIT APPLICATION G-17452

SECTION 34, TOWNSHIP 25 SOUTH, RANGE 30 EAST, W.M.  
TAX LOT: 2002 &  
SECTIONS 3, 4, 9, & 10 TOWNSHIP 26 SOUTH, RANGE 30 EAST, W.M.  
TAX LOTS: 700, 800, & 1200



- #7  
WELL #7 (HARN 51272) LOCATED 4725' SOUTH & 1877' EAST FROM THE NW CORNER SECTION 34. FLOW METER IS LOCATED 6 FEET SW FROM WELL.
- #10  
WELL #10 (HARN 51765) LOCATED 6310' SOUTH & 415' EAST FROM THE NW CORNER SECTION 34. FLOW METER IS LOCATED 7 FEET SOUTH FROM WELL.
- #11  
WELL #11 (HARN 51760) LOCATED 6340' SOUTH & 330' EAST FROM THE NW CORNER SECTION 34. FLOW METER IS LOCATED 7 FEET SOUTH FROM WELL.
- #12  
WELL #12 (HARN 51817) LOCATED 2690' SOUTH & 2890' WEST FROM THE NE CORNER SECTION 33. FLOW METER IS LOCATED 6 FEET WEST FROM WELL.
- #13  
WELL #13 (HARN 51445) LOCATED 6415' SOUTH & 2745' WEST FROM THE NE CORNER SECTION 33. FLOW METER IS LOCATED 6 FEET NORTH FROM WELL.
- #14  
WELL #14 (HARN 51871) LOCATED 4314' SOUTH & 870' WEST FROM THE NE CORNER SECTION 33. FLOW METER IS LOCATED 6 FEET SOUTH FROM WELL.
- #15  
WELL #15 (HARN 51970) LOCATED 4314' SOUTH & 920' WEST FROM THE NE CORNER SECTION 33. FLOW METER IS LOCATED 7 FEET SOUTH FROM WELL.
- #16  
WELL #16 (HARN 52121) LOCATED 635' NORTH & 1605' WEST FROM THE SE CORNER OF SECTION 29. FLOW METER IS LOCATED 6 FEET SOUTH FROM WELL.
- #17  
WELL #17 (HARN 52154) LOCATED 6300' SOUTH & 440' EAST FROM THE NW CORNER SECTION 34. FLOW METER IS LOCATED 7 FEET WEST FROM WELL.
- #18  
WELL #18 (HARN 52170) LOCATED 785' NORTH & 1630' WEST FROM THE SE CORNER OF SECTION 29. FLOW METER IS LOCATED 6 FEET EAST FROM WELL.

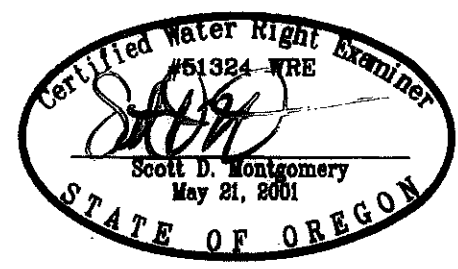
— BURIED 6 OR 8 INCH STEEL PIPE

① OWNER'S PIVOT NUMBER


THIS MAP IS FOR THE PURPOSE OF LOCATING A WATER RIGHT ONLY AND HAS NO INTENT TO PROVIDE LEGAL DIMENSIONS OR THE LOCATION OF PROPERTY LINES

RECEIVED  
NOV 27 2008  
OWRD

1156  
(343)



RENEWAL DATE: 12/31/2018

<p>PREPARED FOR:</p> <p>ANDY ROOT 524 HWY 20N HINES, OR 97738</p>	<p>PREPARED BY:</p>  <p>ALL POINTS ENGINEERING AND SURVEYING, INC. P.O. BOX 767 TERREBONNE, OR 97760 (541) 548-5833 www.APEandS.com</p>
---	--

1156 (343)