

WORK COPY
Scale approx.
1" = 100 ft.

POND EXHIBIT
FOR
ROBERT H. AND DELORES I. FOSS

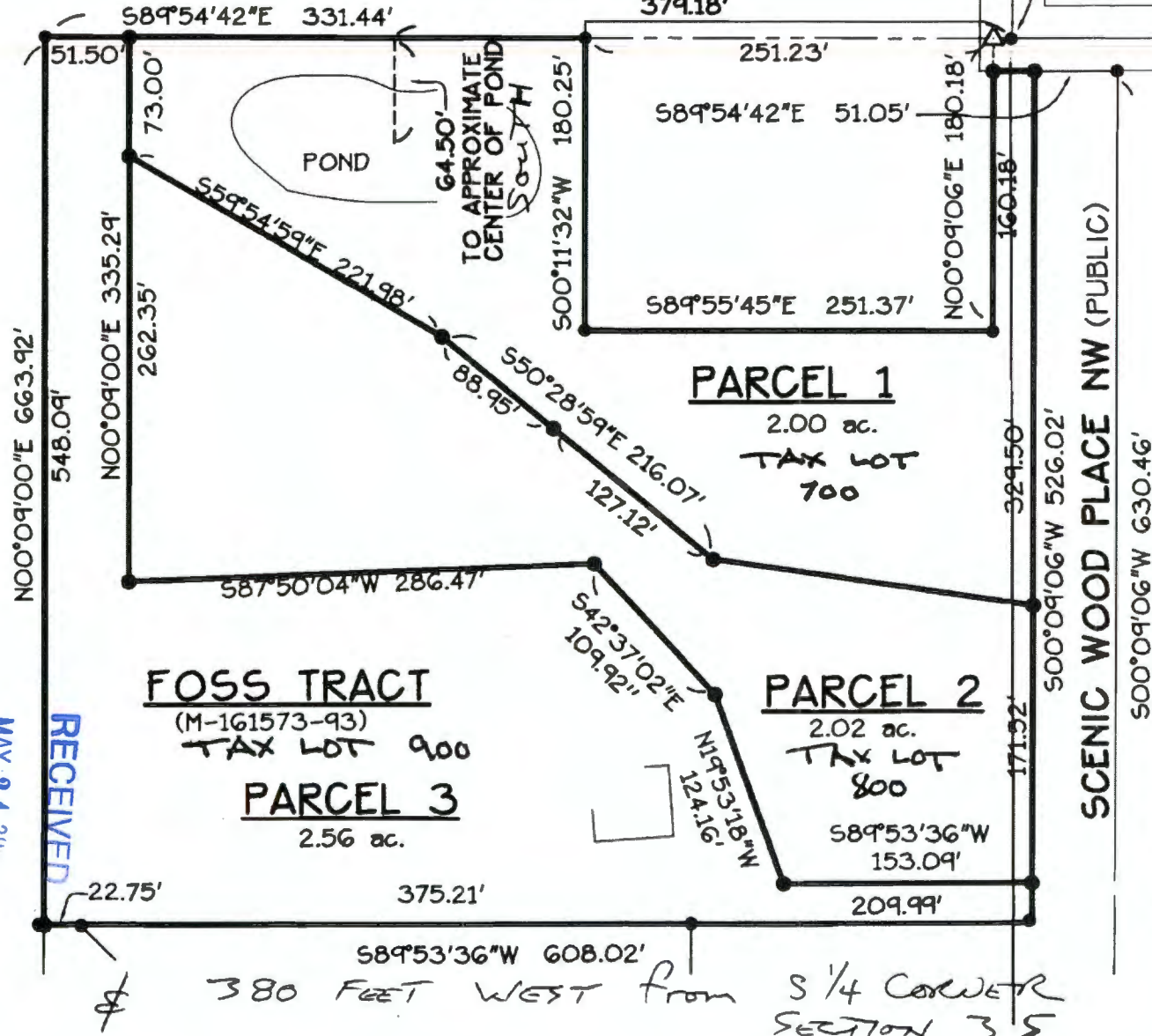
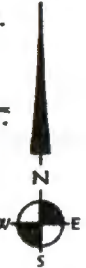
LOCATED IN
NW 1/4 OF SEC. 2, T. 11 S., R. 4 W., W.M.
BENTON COUNTY, OREGON
MARCH 30, 2005 58°54'42"E 593.58'
379.18'

S. 1/4 COR. SEC. 35
T. 10 S., R. 4 W.
FD. 5/8" I.R. W/ YPC STAMPED
"BENTON COUNTY SURVEYOR"
IN MON. BOX PER
RESTORATION No. 3156.
HELD.

0 60 120 FT.

SCALE: 1" = 60'
APPROX
100 FT.

T. 10 S. R. 4 W.
T. 11 S. R. 4 W.



LEGEND:

- FD. MONUMENT
- △ CALCULATED POINT

app# R86252

RECEIVED

APR 04 2005

WATER RESOURCES DEPT.
SALEM, OREGON

RECEIVED

APR 11 2005

WATER RESOURCES DEPT.
SALEM OREGON

Date: 3/30/2005 Time: 16:55
Scale: 1=60(PS)
File: dwg\2004\04-71\71-Pond.dwg (Brian E)



K & D ENGINEERING, Inc.
276 N.W. Hickory Street P.O. Box 726
Albany, Oregon 97321
(541) 928-2583

OWRD

MAY 24 2015

RECEIVED