

# FINAL PROOF MAP

TO SHOW WATER RIGHTS AND  
POINTS OF APPROPRIATION  
FOR TRANSFER T-11615  
ANDY ROOT

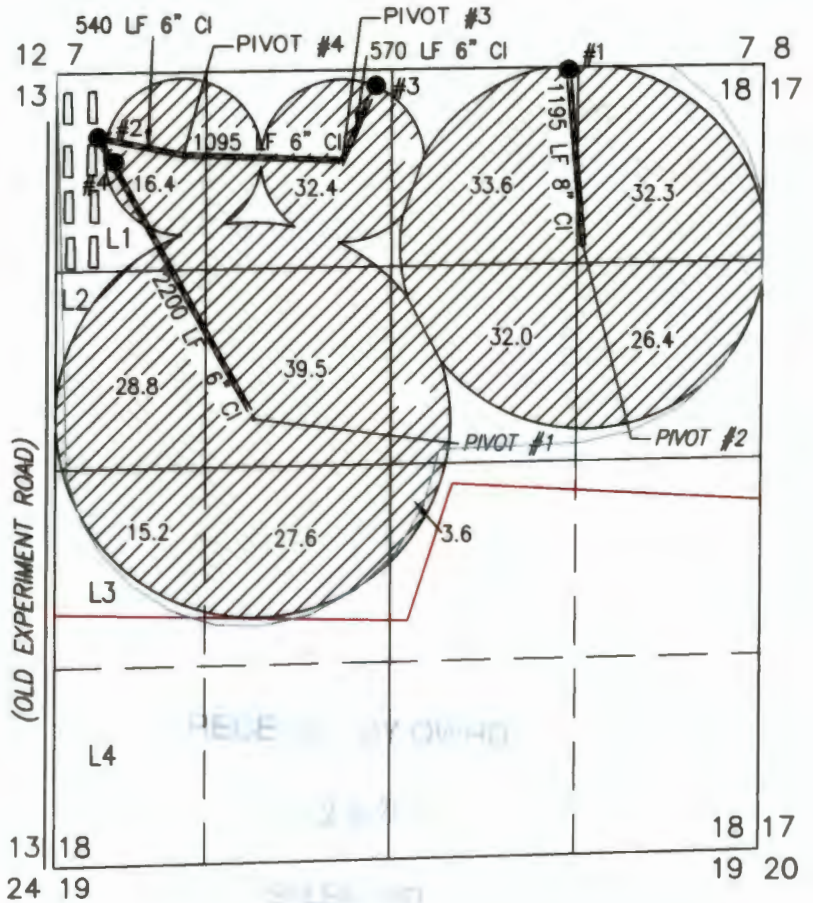
TOWNSHIP 23 SOUTH, RANGE 32 EAST, SECTION 18, W.M.  
TAX LOT: 2500 HARNEY COUNTY, OREGON




RENEWAL DATE: 12/31/2016

THIS MAP IS FOR THE PURPOSE OF LOCATING  
A WATER RIGHT ONLY AND HAS NO INTENT TO  
PROVIDE LEGAL DIMENSIONS OR THE LOCATION  
OF PROPERTY LINES

- #1  
WELL #1 (HARN 50927) PERMIT: G-15942  
50' SOUTH & 3520' EAST FROM THE NW CORNER  
SECTION 18 FLOWMETER IS LOCATED ON THE  
SUPPLY PIPE 6 FEET SOUTH FROM THE WELL.
- #2  
WELL #2 (HARN 51150) PERMIT: G-15942  
410' SOUTH & 300' EAST FROM THE NW  
CORNER SECTION 18. FLOWMETER IS LOCATED  
ON SUPPLY PIPE 8 FEET SOUTH FROM WELL.
- #3  
WELL #3 (HARN 51157) PERMIT: G-15942  
140' SOUTH & 2200' EAST FROM THE NW  
CORNER SECTION 18. FLOWMETER IS LOCATED ON  
SUPPLY PIPE 7 FEET SOUTH FROM WELL.
- #4  
WELL #4 (HARN 52181) TRANSFER: T-11615  
580' SOUTH & 415' EAST FROM THE NW CORNER  
SECTION 18. FLOWMETER IS LOCATED ON SUPPLY  
PIPE 6 FEET SE FROM WELL.



— — — — —  
BURIED 6 OR 8 INCH STEEL PIPE

 287.8 ACRES PRIMARY IRRIGATION FROM  
WELLS 1, 2, 3, & 4, AS SHOWN

PREPARED FOR:  
ANDY ROOT  
524 HIGHWAY 20 N  
HINES, OR 97738

PREPARED BY:  
 ALL POINTS ENGINEERING AND SURVEYING, INC.  
P.O. BOX 767 TERREBONNE, OR 97760  
(541) 548-5833 www.APEandS.com