

**Final Proof Survey Map
for Sunnyside Dairy, LLC
Permit # G-17816, Transfer # T12438
T26S, R30 & 31 E, W.M.
Harney County, Oregon**

- Legend**
- ⊗ Well Locations
 - Pivot Points
 - 12-Inch Buried Mainline
 - - - 8-Inch Buried Mainline
 - ▨ Irrigated Area

Well Location

Well 6
1239 feet South and 2289 feet West from the NE Corner of Section 13, T26S 30E, WM

Well 8
167 feet North and 462 feet West from the SE Corner of Section 12, T26S 30E, WM

Well 9
1260 feet South and 1290 feet East from the NW Corner of Section 18, T26S 31E, WM

Well 12
2628 feet South and 806 feet East from the NW Corner of Section 12, T26S 30E, WM

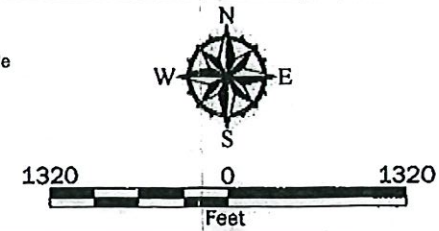
Well 13
2555 feet South and 110 feet East from the NW Corner of Section 11, T26S 30E, WM

Well 14
660 feet South and 2307 feet West from the NE Corner of Section 13, T26S 30E, WM

Newest Well
2206 feet South and 82 feet West from the NE Corner of Section 11, T26S 30E, WM

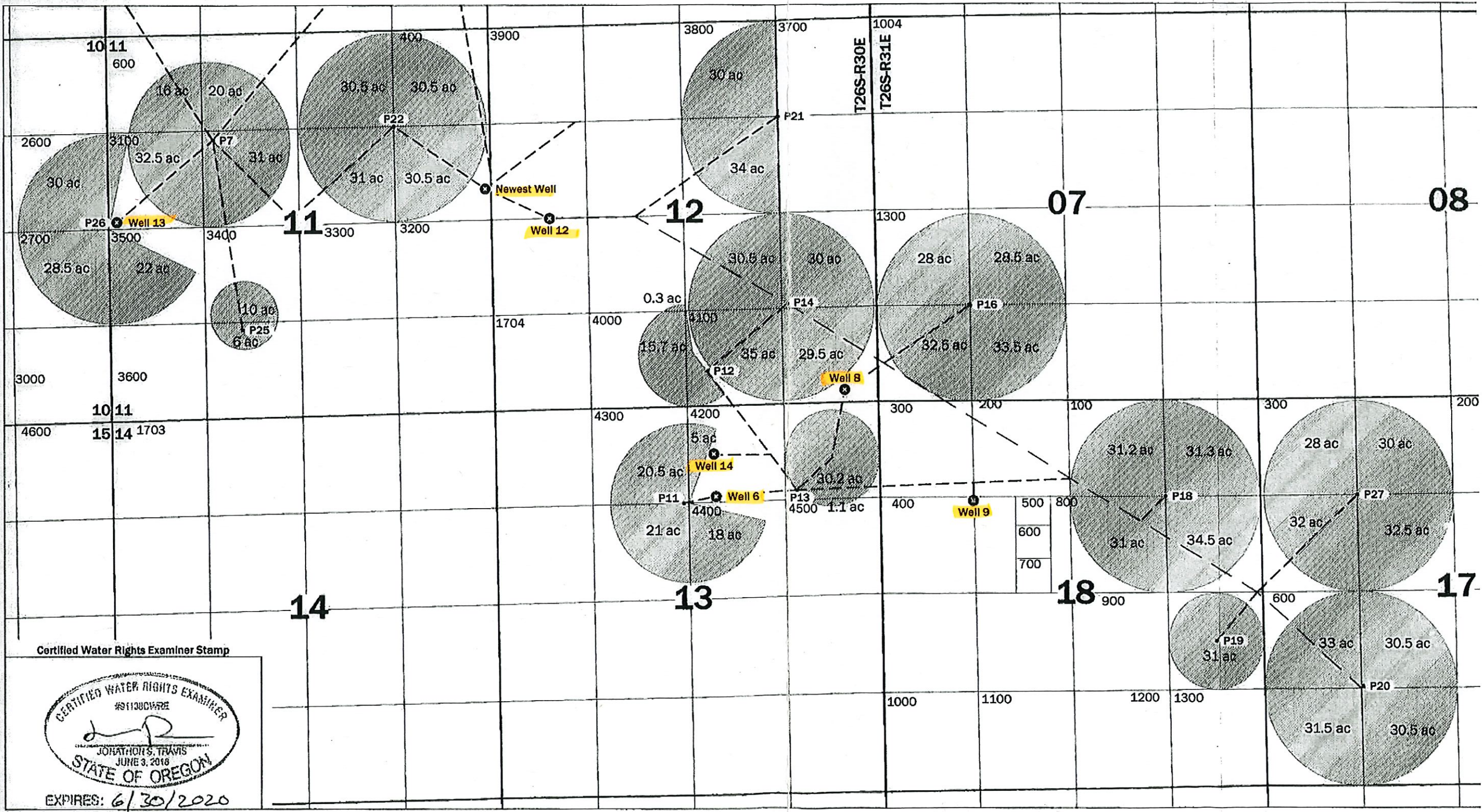
Disclaimer
This map was prepared for the purpose of identifying the location of a water right only and it is not intended to provide legal dimensions or location of property ownership lines.

Map Notes
Date: 4/15/2020
Data Sources: ESRI
Prepared By: GeoEngineers



GEOENGINEERS

P:\23\23418001\CAD\00 Sunnyside Dairy - FPS Map\2341800100_Sunnyside FPS Map.dwg TAB:11x17 Landscape Date Exported: 04/15/20 - 14:12 by hmare



Certified Water Rights Examiner Stamp



EXPIRES: 6/30/2020