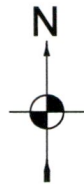


MAP FOR

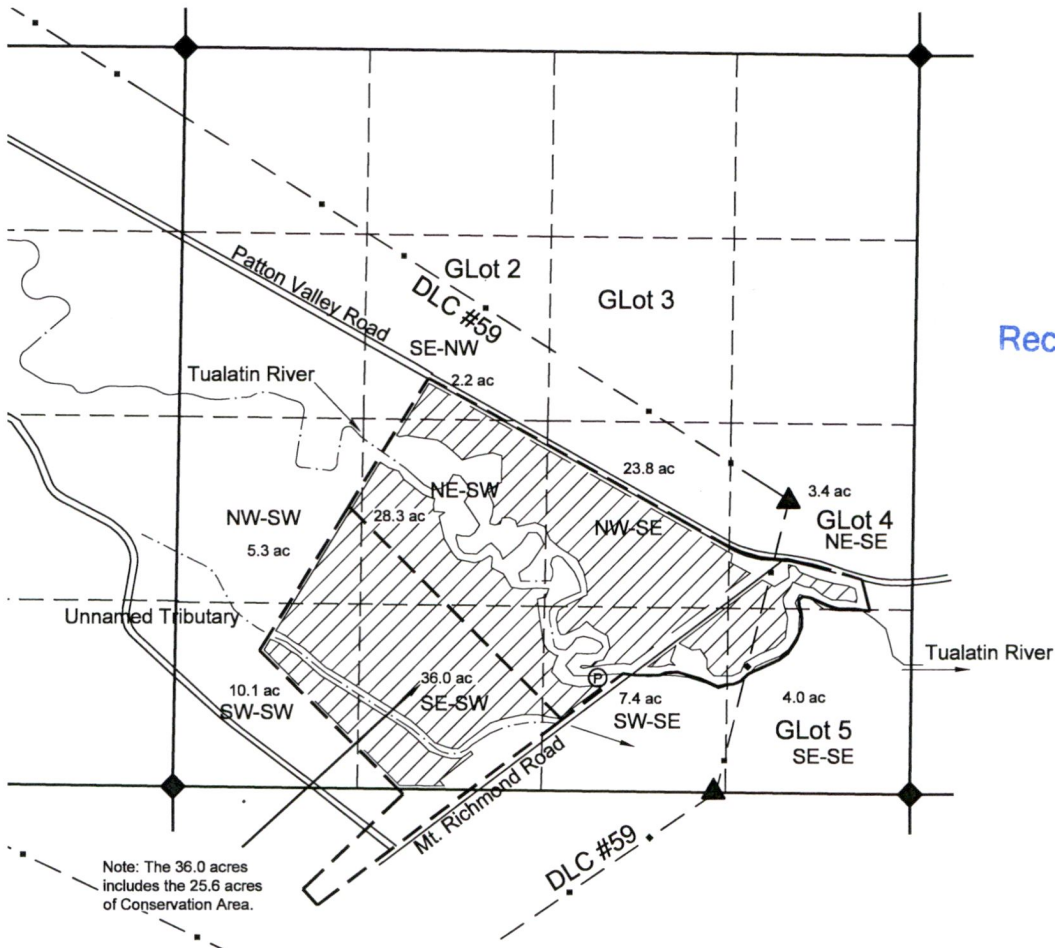
# Allocation of Conserved Water

## S32, T1S, R4W, WASHINGTON COUNTY

### CERTIFICATE 16677



1 IN = 1320 FT  
0 660 1320



Received by OWRD

MAR 04 2021

Salem, OR

THE PROPOSED POD IS 820' NORTH AND 2200' WEST FROM THE SE CORNER S32.

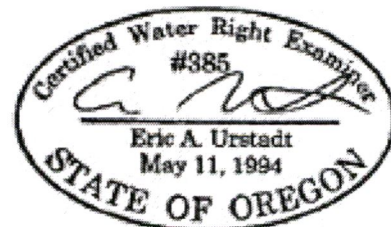
#### NOTES:

- THE SECTION, DLC, AND AND PROPERTY LINES ARE FROM A SCALED TAX ASSESSOR MAP.
- GOVERNMENT LOTS (GLot) ARE FROM GENERAL LAND OFFICE RECORDS.
- WATER CONVEYANCE PIPELINES ARE NOT SHOWN; ALL ARE WITHIN THE PROPERTY OWNERSHIP.

#### LEGEND

- DONATION LAND CLAIM (DLC) CORNER
- SECTION OR QUARTER CORNER
- PROPOSED POINT OF DIVERSION (POD)
- QUARTER-QUARTER LINE
- DLC LINE
- TAX LOT LINE
- SECTION LINE
- LOCATION OF 5.03 FOOT WIDE STRIPS SPACED TWENTY FEET APART; ROWS ALIGNED WITH HATCHING; PER T-12204 & T-12996.

THIS MAP IS NOT INTENDED TO PROVIDE LEGAL DIMENSIONS OR LOCATIONS OF PROPERTY OWNERSHIP LINES.



#### ASPEN RURAL LAND CONSULTING

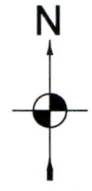
ERIC URSTADT, PE, PLS  
971-250-1520  
Mar2021  
WVL-Patton5D

MAP FOR

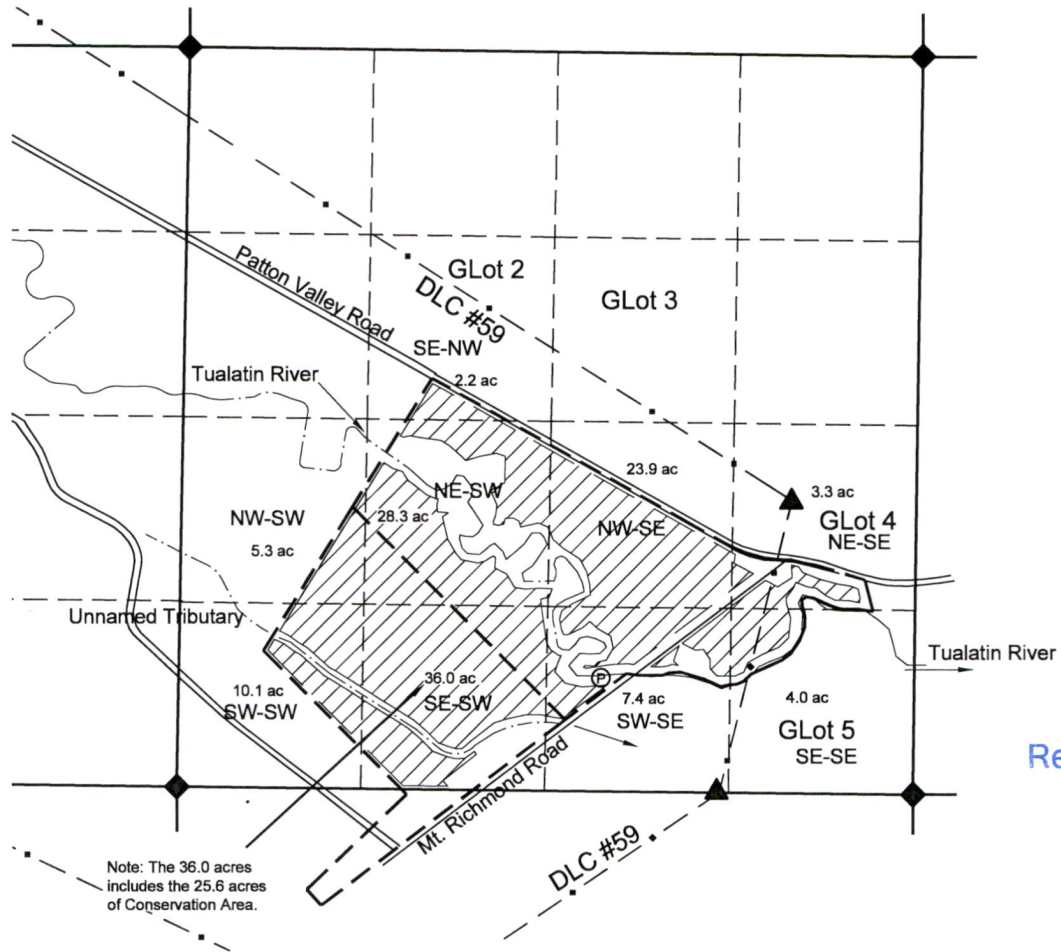
# Allocation of Conserved Water

## S32, T1S, R4W, WASHINGTON COUNTY

### CERTIFICATE 16677



1 IN = 1320 FT  
0 660 1320



Note: The 36.0 acres includes the 25.6 acres of Conservation Area.

Received by OWRD

MAR 04 2021

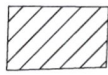
Salem, OR

THE PROPOSED POD IS 820' NORTH AND 2200' WEST FROM THE SE CORNER S32.

- NOTES:
- THE SECTION, DLC, AND AND PROPERTY LINES ARE FROM A SCALED TAX ASSESSOR MAP.
  - GOVERNMENT LOTS (GLot) ARE FROM GENERAL LAND OFFICE RECORDS.
  - WATER CONVEYANCE PIPELINES ARE NOT SHOWN; ALL ARE WITHIN THE PROPERTY OWNERSHIP.

#### LEGEND

- ▲ DONATION LAND CLAIM (DLC) CORNER
- ◆ SECTION OR QUARTER CORNER
- ⊙ PROPOSED POINT OF DIVERSION (POD)
- QUARTER-QUARTER LINE
- - - DLC LINE
- TAX LOT LINE
- SECTION LINE

 LOCATION OF 5.03 FOOT WIDE STRIPS SPACED TWENTY FEET APART; ROWS ALIGNED WITH HATCHING; PER T-12204 & T-12996.

THIS MAP IS NOT INTENDED TO PROVIDE LEGAL DIMENSIONS OR LOCATIONS OF PROPERTY OWNERSHIP LINES.



#### ASPEN RURAL LAND CONSULTING

ERIC URSTADT, PE, PLS  
971-250-1520  
Mar2021  
WVL-Patton5D