

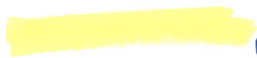
OCHOCO IRRIGATION DISTRICT

T. 14S., R. 16E., W.M., Section 28

SCALE: 1" = 400'



3111

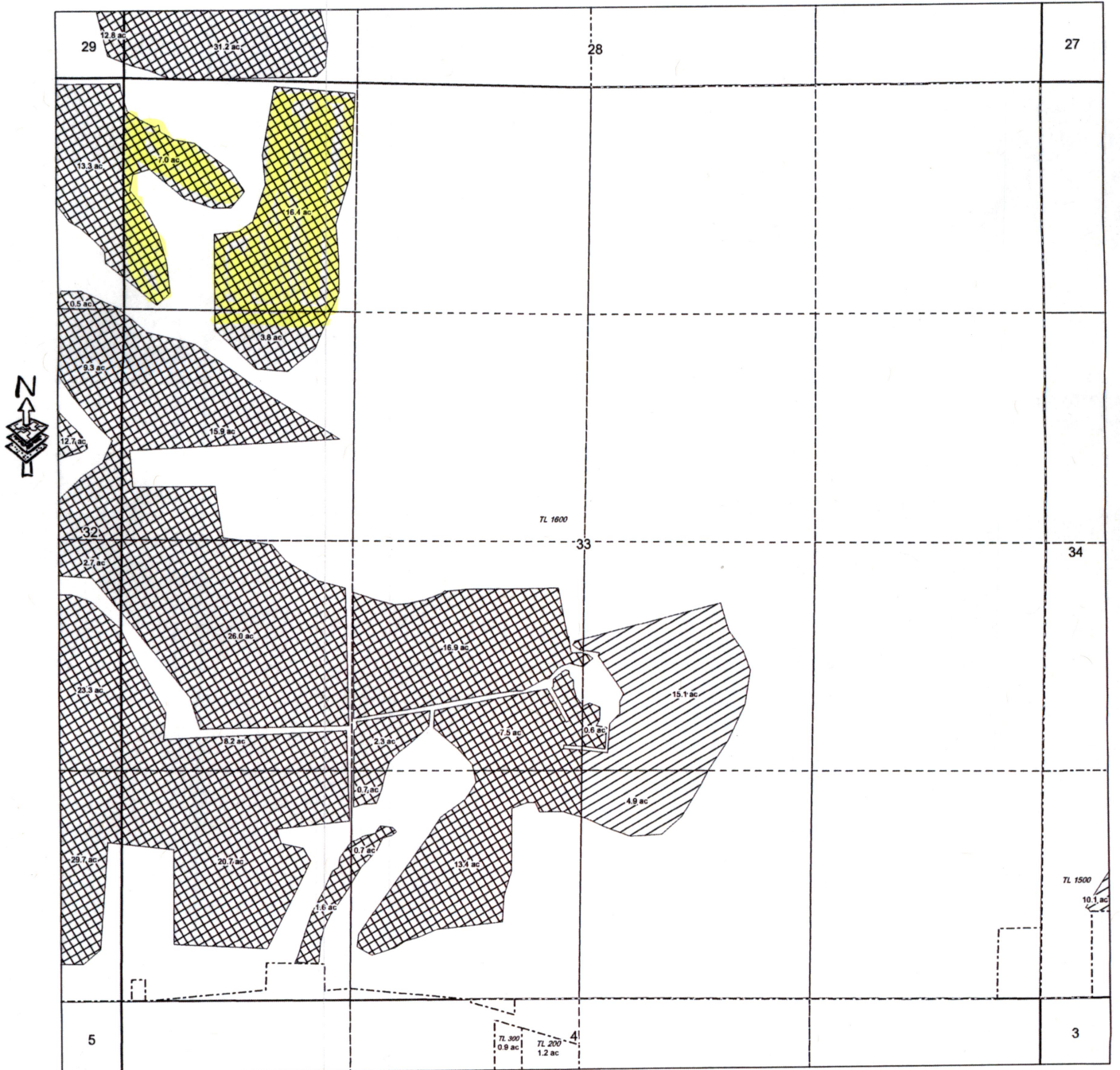


C. 82267 + 82268

OCHOCO IRRIGATION DISTRICT

T. 14S., R. 16E., W.M., Section 33

SCALE: 1" = 400'



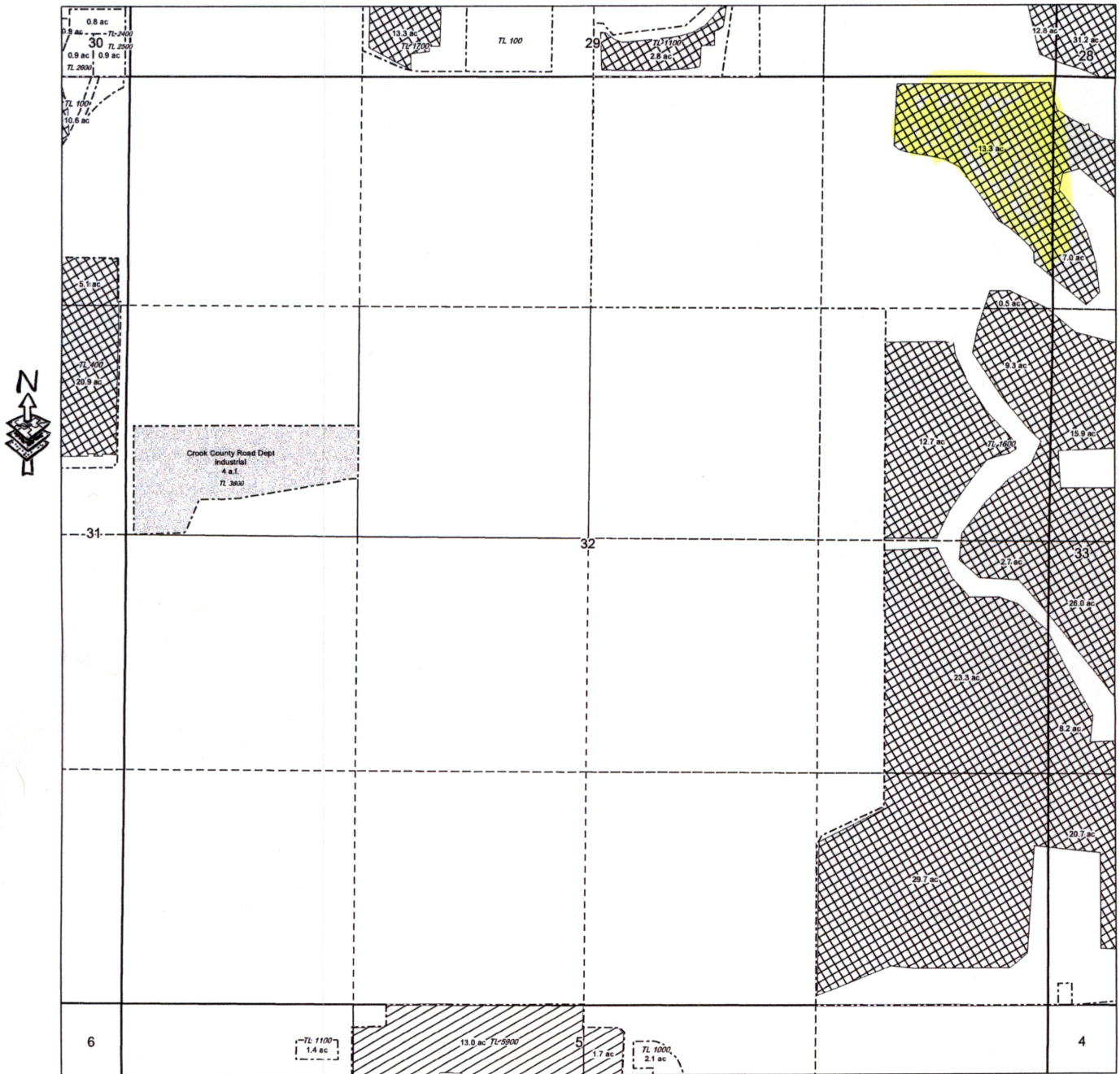
3111

Cert. 82267 & Cert 82268

OCHOCO IRRIGATION DISTRICT

T. 14S., R. 16E., W.M., Section 32

SCALE: 1" = 400'



3111

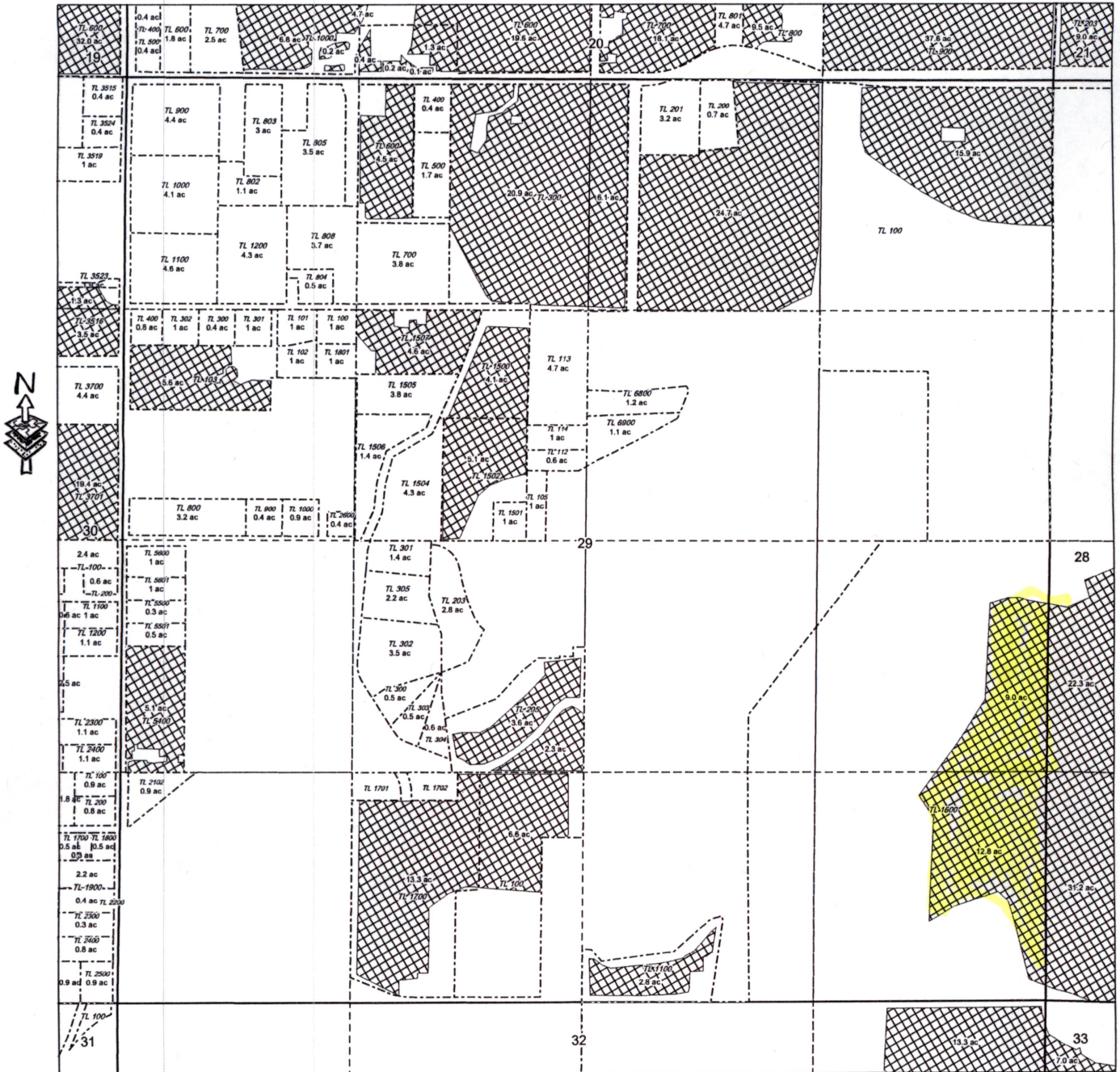


82267 + 82268

OCHOCO IRRIGATION DISTRICT

T. 14S., R. 16E., W.M., Section 29

SCALE: 1" = 400'



3111 [Yellow Box] 82267 & 82268

Crook County

T 14S R 16E Sec. 28 Tax Lot 1601

NW Of The SW

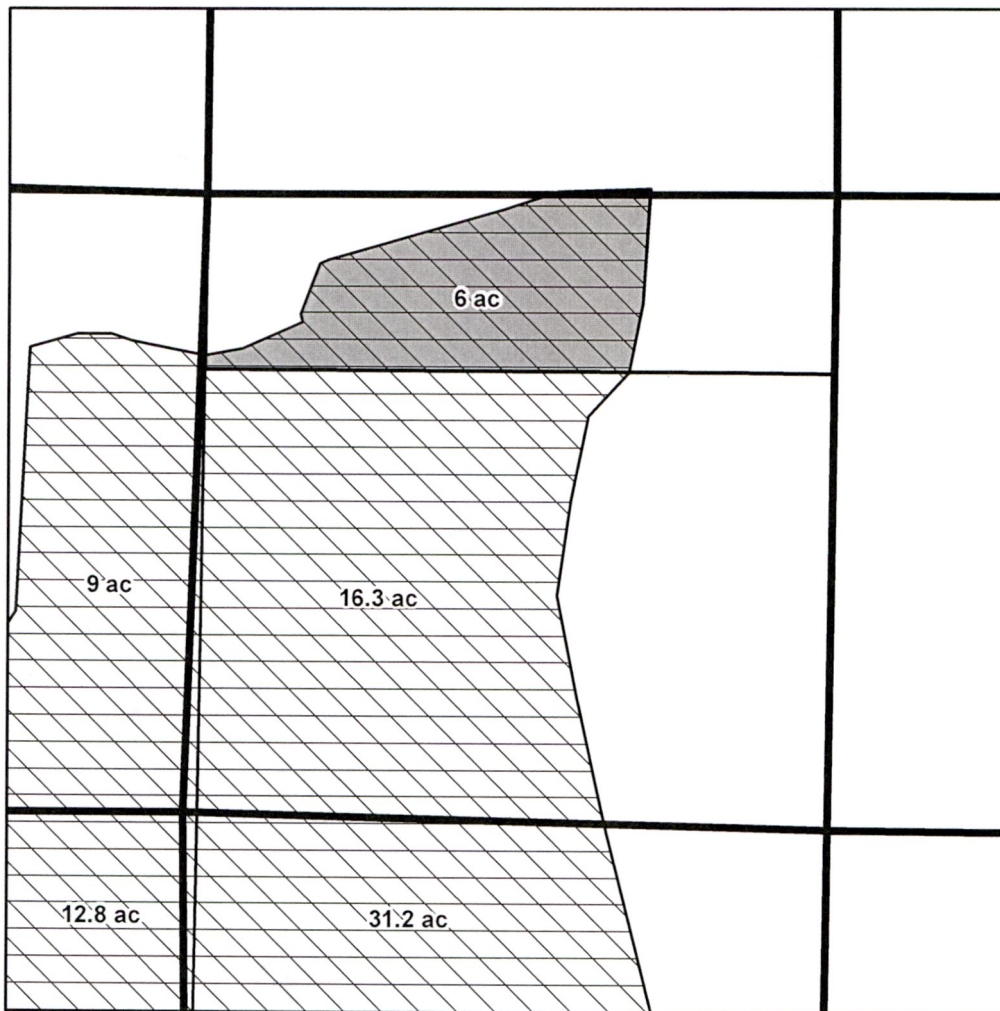
RECEIVED

DEC 28 2018

OWRD



OFF Map



1 in = 400 ft

District Internal Notice #: 2

Certificate #: 82246 IR

- Transfer
- Cert 82246 IR
- Cert 82246 IR / 82247 IS
- Less than 5 acres
- Cert 82247 IR
- Cert 82249 IS
- Tax Lot
- QQ



Permanent Transfer

DeBaca Land and Cattle Co

Acres: 6.0 acres Off 82246 Primary

13091