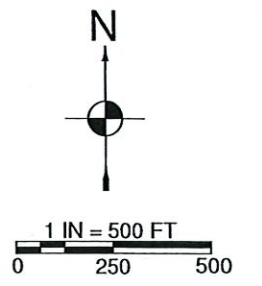


MAP FOR
Claim of Beneficial Use
 SE 1/4, S6, T10S, R5W, POLK COUNTY
 APPLICATIONS R-88284 & S-88285, PERMITS R-15290 & S-55110

THIS MAP IS NOT INTENDED
 TO PROVIDE LEGAL DIMENSIONS
 OR LOCATIONS OF PROPERTY
 OWNERSHIP LINES.

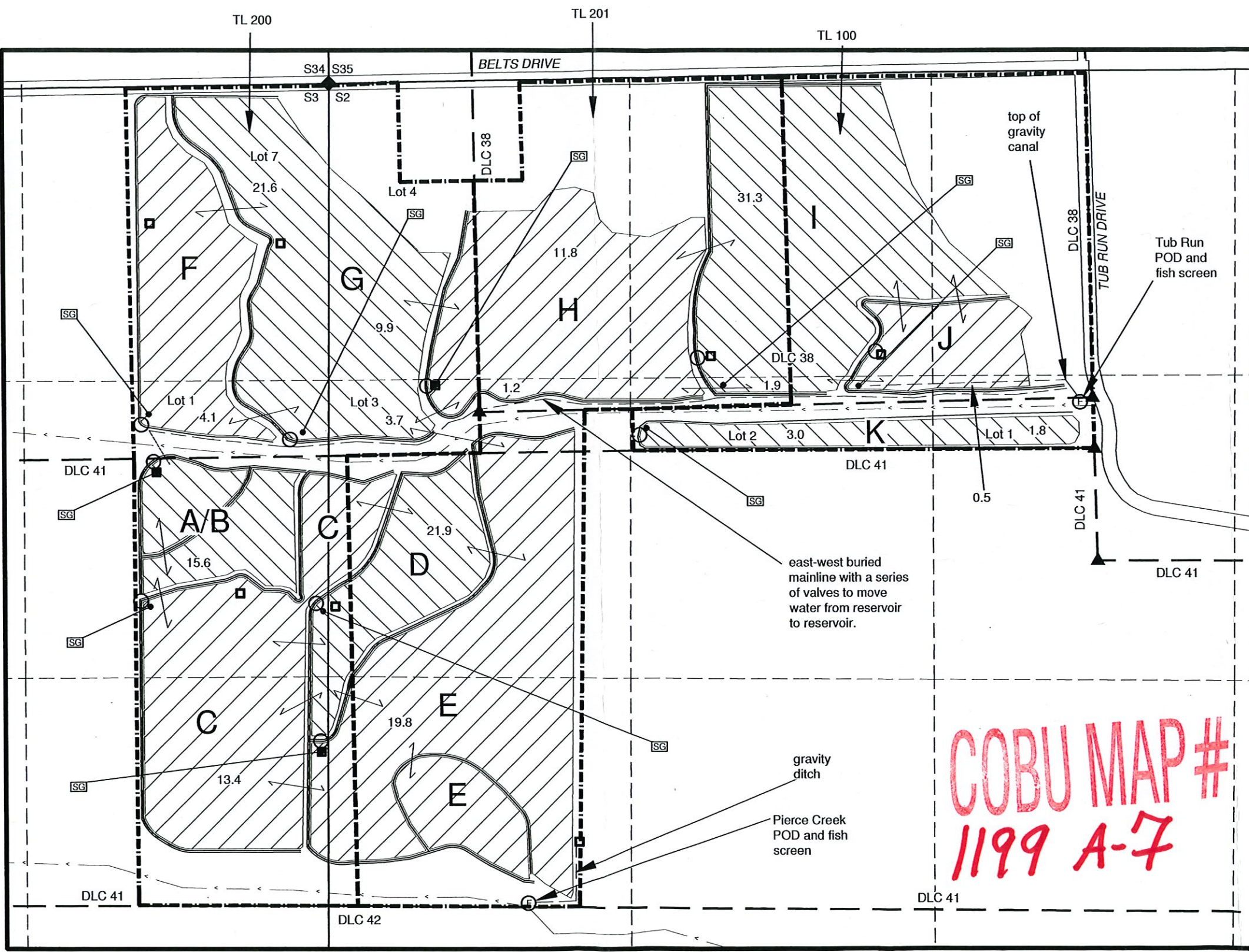
POD	POD LOCATIONS
A/B	1670' S & 790' W of NW S2
C	2280' S & 850' W of NW S2
D	2290' S & 75' W of NW S2
E	2900' S & 55' W of NW S2
F	1505' S & 840' W of NW S2
G	1565' S & 185' W of NW S2
H	1335' S & 420' E of NW S2
I	1210' S & 1620' E of NW S2
J	1170' S & 2395' E of NW S2
K	1550' S & 1370' E of NW S2
Pierce Cr.	1405' S & 3315' E of NW S2
Tub Run	3620' S & 860' W of NW S2



RECEIVED
 SEP 16 2019
 RECEIVED
 OWRD

OCT 07 2019

OWRD



NOTES:
 -SCALED TAX ASSESSOR MAPS WERE USED TO FOR SECTION AND QUARTER-QUARTER LINES. A 2017 GOOGLE AERIAL PHOTO WAS USED TO DETERMINE DAM LOCATIONS AND FOR OCCUPATION LINES TO ESTIMATE DLC AND PROPERTY BOUNDARIES.
 -POD'S FOR THE DAMS ARE AT THE ESTIMATED HIGHEST POINT OF THE DAMS.
 -THE UPPER EXTENTS OF THE RESERVOIRS (HAVING ZERO WAER DEPTH) WERE PROVIDED BY SKETCHES FROM THE LANDOWNERS AND CONFIRMED WITH VEGETATION LINES ON THE AERIAL PHOTO WHERE POSSIBLE.
 -RESERVOIRS A/B AND E HAVE DIKES IN THE MIDDLE OF THE RESERVOIRS; HOWEVER, THE WATER CAN FLOW FREELY THROUGH THE INNER DIKES.

- LEGEND
- ▲ DONATION LAND CLAIM (DLC) CORNER
 - ◆ SECTION OR QUARTER CORNER
 - POINT OF DIVERSION (POD) (BLANK=DAM & F=LIVE FLOW POD AND FISH SCREEN)
 - SG STAFF GAUGE (AT DOT)
 - 12 INCH CULVERT WITH FLASHBOARD HEADGATE INLET.
 - TAX LOT LINE
 - - - SECTION LINE
 - - - QUARTER-QUARTER LINE
 - - - DLC LINES
 - - - STREAM OR SURFACE DRAINAGE
 - - - CONVEYANCE PIPELINE, DITCH OR CANAL
 - RESERVOIR, NAME, & ACRES OF IN-RESERVOIR IRRIGATION (BY QUARTER-QUARTER)

COBU MAP #
 1199 A-7



MAP BY:
ASPEN RURAL LAND CONSULTING
 ERIC URSTADT, PE, PLS
 971-250-1520
 Sep 2019
 RiverRefuge4C