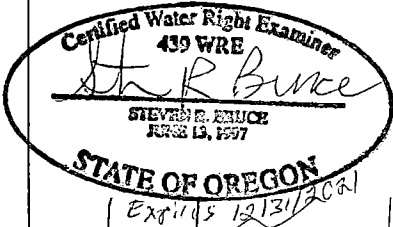


Sections 31 & 32, T12S, R5W and Section 6, T13S, R5W, W.M.,
Benton County, Oregon

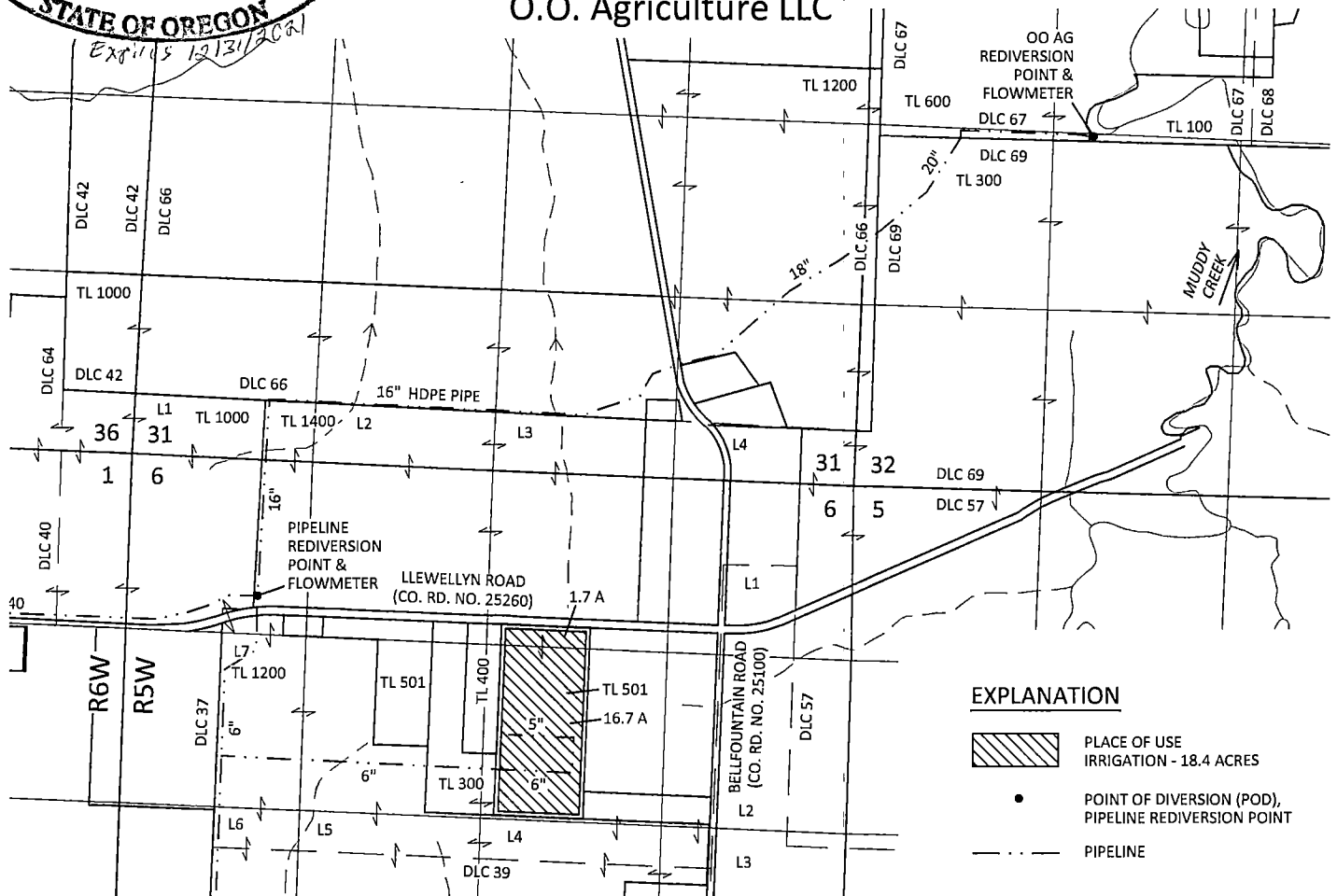
RECEIVED

JUN 30 2021



Application S-88666, Permit S-55211
CLAIM OF BENEFICIAL USE MAP
O.O. Agriculture LLC

OWRD



EXPLANATION

- PLACE OF USE IRRIGATION - 18.4 ACRES
- POINT OF DIVERSION (POD), PIPELINE REDIVERSION POINT
- PIPELINE

Site inspection conducted 3/11/2021

WILLAMETTE MAINSTREAM DIVERSION POINT LOCATED:
1,700 FT S AND 980 FT E
FROM NW CORNER OF SECTION 19, T13S, R4W

OO AG REDIVERSION POINT LOCATED:
2,590 FT N AND 1,800 FT E
FROM SW CORNER OF SECTION 32, T12S, R5W

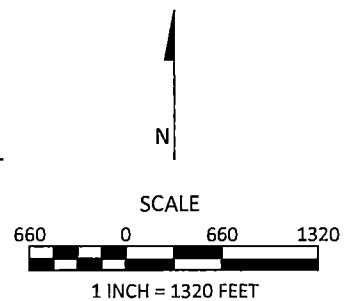
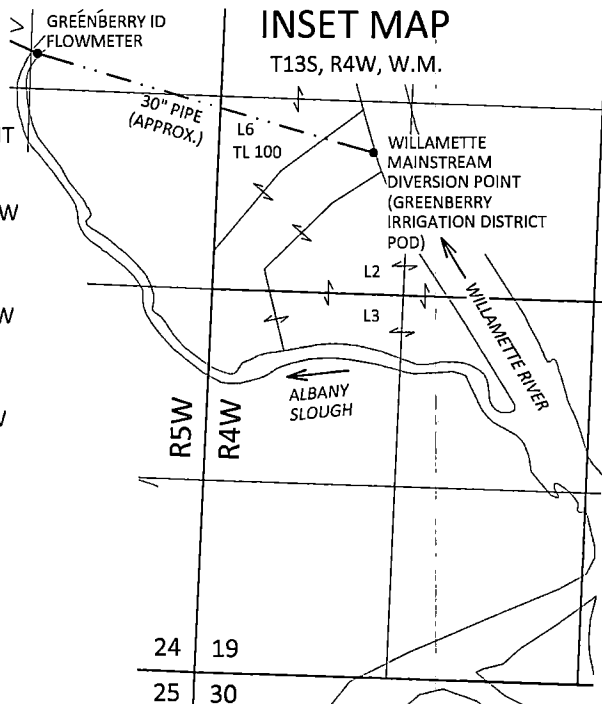
PIPELINE REDIVERSION POINT LOCATED:
1,040 FT S AND 930 FT E
FROM NW CORNER OF SECTION 6, T13S, R5W

SKOOKUM
WATER ASSOCIATES INC

1626 VICTORIAN WAY
EUGENE, OR 97401
(503) 319-8926

KPFF NO. 1700014.41

INSET MAP
T13S, R4W, W.M.



April 14, 2021

This map is not intended to provide legal dimensions or locations of property ownership lines

Figure 1