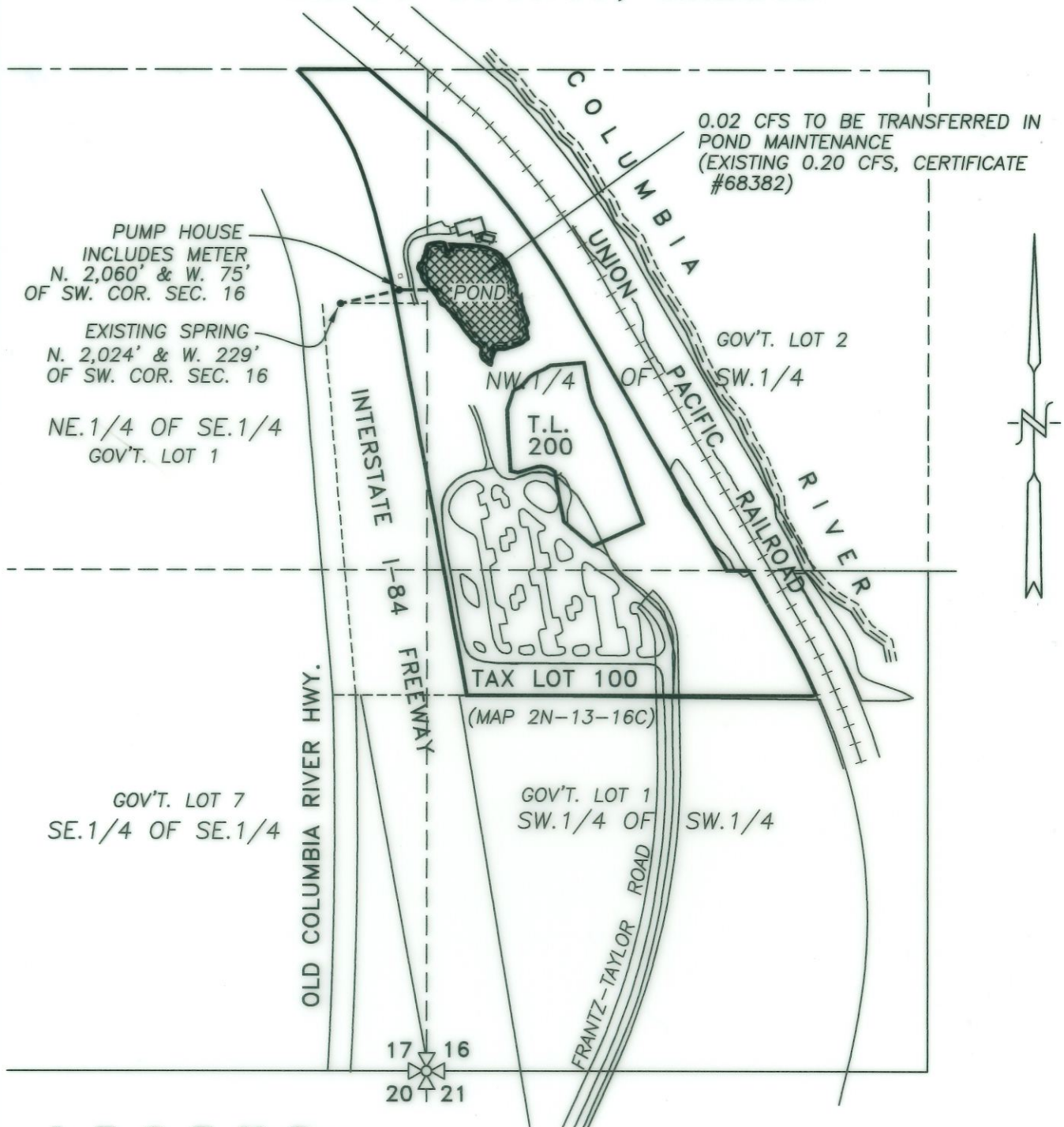


SECTIONS 16 & 17, TWP.2 N. RANGE 13 E. W.M.  
 WASCO COUNTY, OREGON



**LEGEND:**



AREA TO BE TRANSFERRED IN (1.6 AC. TOTAL = 0.02 C.F.S.)  
 (FOR POND MAINTENANCE, LIMITED TO IRRIG. SEASON ONLY)

----- PIPELINE

RECEIVED BY OWFD

JUN 08 2015

**CLAIM OF BENEFICIAL USE MAP**

SALEM, OR

SCALE: 1" = 400'



TRANSFER No. 7821

IN THE NAME OF:  
WASCO COUNTY

DATE: MAY 26, 2015



EXPIRES: 06/30/2016

BY: **TENNESON ENGINEERING CORP.**

3775 CRATES WAY  
 THE DALLES, OREGON. 97058  
 PH. 541-296-9177  
 FAX 541-296-6657



**NOTE:**

"THIS MAP IS NOT INTENDED TO PROVIDE DIMENSIONS OR LOCATIONS OF PROPERTY OWNERSHIP LINES."

W.O. #8431wrt1