

Zenith pond is 1.625 feet south and 250 feet west of the quarter section monument between section 23 and 26

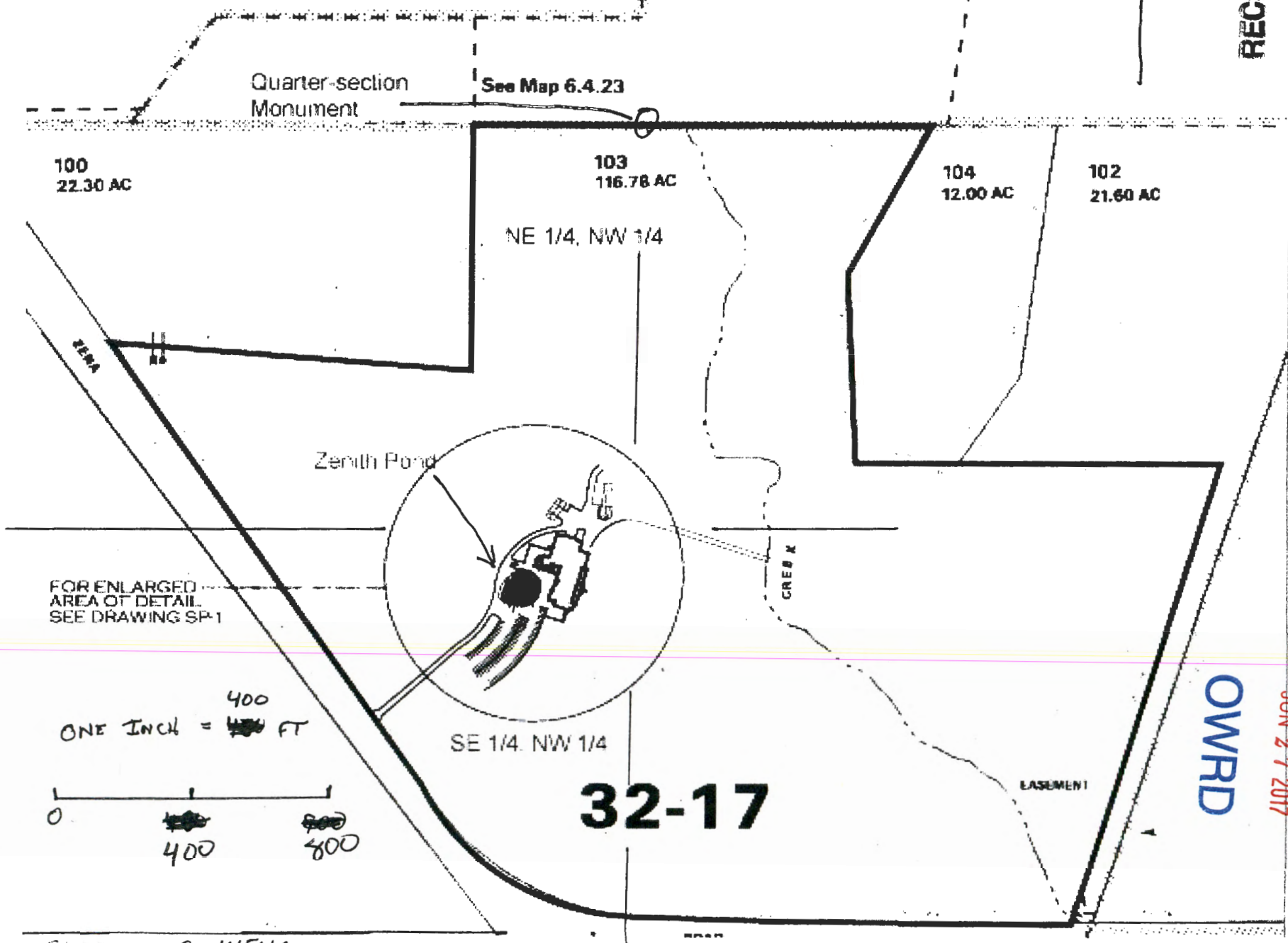
SEC. 26 16S R4W WM POLK COUNTY



RECEIVED

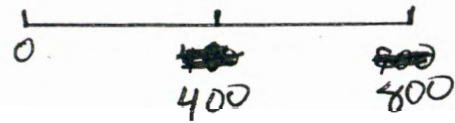
SEP 25 2007

WATER RESOURCES DEPT
SALEM, OREGON



FOR ENLARGED AREA OF DETAIL SEE DRAWING SP-1

ONE INCH = ~~400~~ 400 FT



JUN 27 2017

RECEIVED