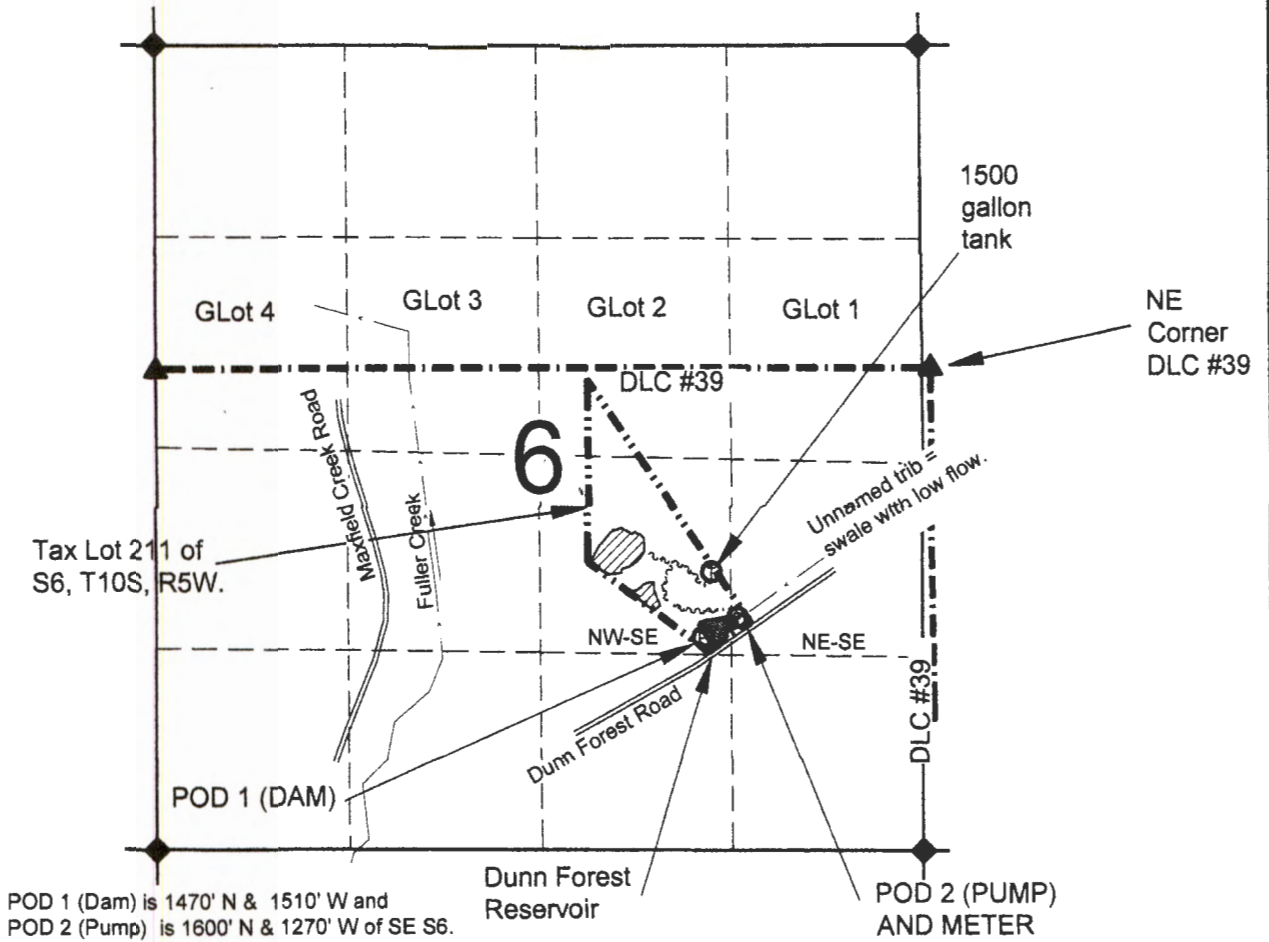


MAP FOR  
**Claim of Beneficial Use**  
 SE 1/4, S6, T10S, R5W, POLK COUNTY  
 APPLICATION R-87587, PERMIT R-14871 AND  
 APPLICATION S-87712, PERMIT S-54718



POD 1 (Dam) is 1470' N & 1510' W and  
 POD 2 (Pump) is 1600' N & 1270' W of SE S6.

**NOTES:**

- THE SECTION, DLC, AND AND PROPERTY LINES ARE FROM A SCALED TAX ASSESSOR MAP FOR SECTION 6 OF T10S, R5W.
- GOVERNMENT LOTS (GLot) ARE FROM GENERAL LAND OFFICE RECORDS.
- NO CREEK FLOWS IN OR OUT THE SUBJECT RESERVOIR, IT IS A SMALL DRAINAGE SWALE.

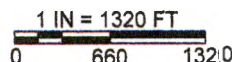
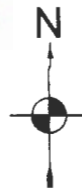
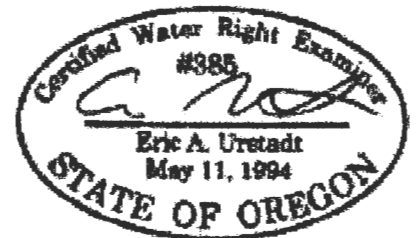
**LEGEND**

- ▲ DONATION LAND CLAIM (DLC) CORNER
- ◆ SECTION OR QUARTER CORNER
- ⊙ PROPOSED POINT OF DIVERSION (POD)
- ⊙ STORAGE TANK
- ~~~~~ UNDERGROUND PIPELINE (APPROXIMATE LOCATION)
- - - - QUARTER-QUARTER LINE
- - - - DLC LINE
- - - - TAX LOT LINE
- - - - SECTION LINE
- - - - STREAM OR SURFACE DRAINAGE.
- ▨ IRRIGATED AREA; 2.2 acres in NW-SE

RECEIVED BY OWRD

AUG 25 2016

SALEM, OR



MAP BY:  
**ASPEN RURAL LAND CONSULTING**

ERIC URSTADT, PE, PLS  
 971-250-1520  
 July 2016  
 Swecker6

THIS MAP IS NOT INTENDED TO PROVIDE LEGAL DIMENSIONS OR LOCATIONS OF PROPERTY OWNERSHIP LINES.