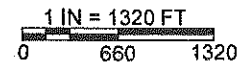
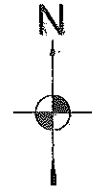
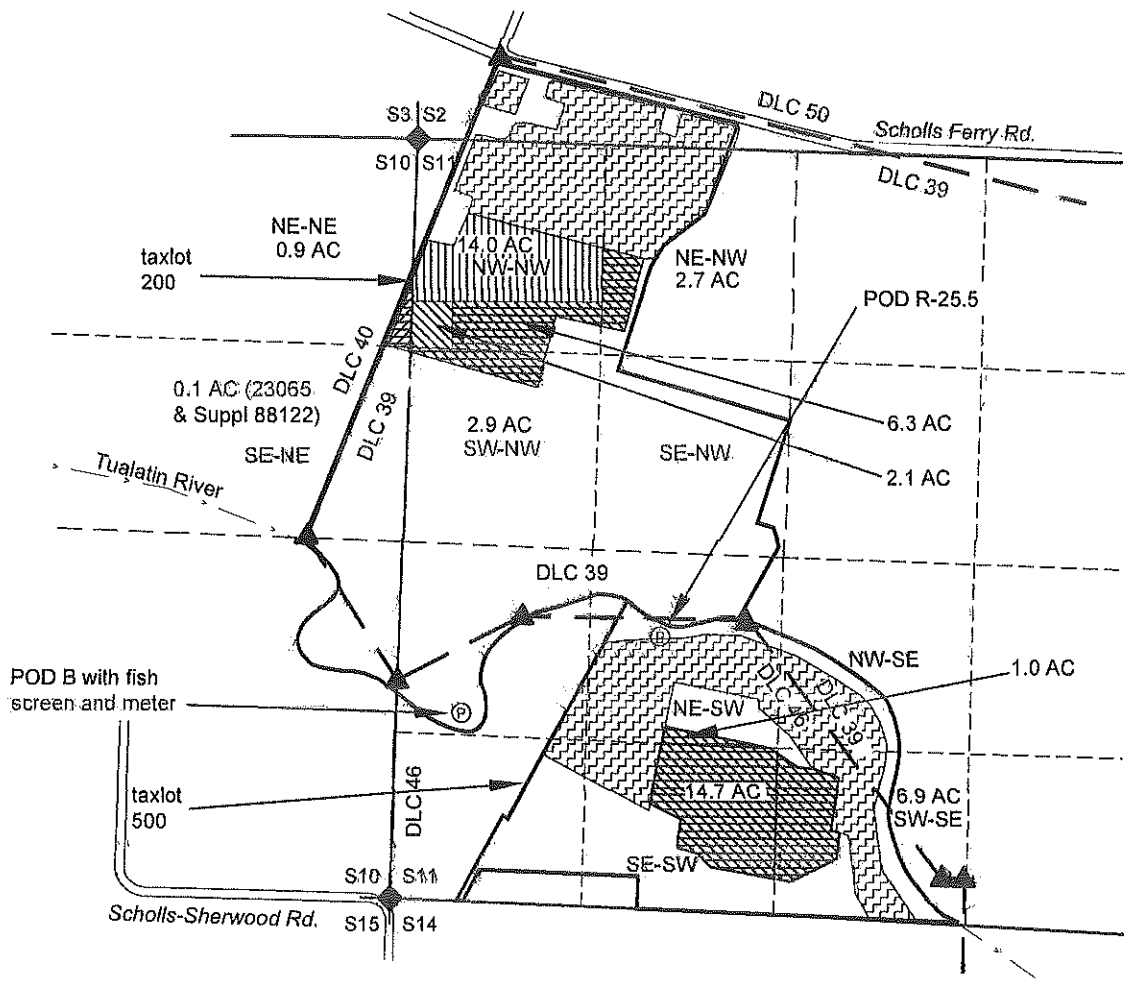


MAP FOR
Claim of Beneficial Use
S10 & S11, T2S, R2W, WASHINGTON COUNTY
Transfer T-12780 involving CERTS, 23038, 23065, 88122



RECEIVED
 OCT 29 2020
 OWRD



LOCATIONS OF POD'S:
 POD B 1280' N & 500' E of SW S11 for lands to North.
 R-25.5 1810' N & 1870' E of SW S11 for lands to South.

NOTES:
 -THIS MAP IS NOT INTENDED TO PROVIDE LEGAL DIMENSIONS OR LOCATIONS OF PROPERTY OWNERSHIP LINES.
 -PROPERTY LINES, DLC LINES, AND THE STREAM LOCATION ARE BASED ON THE TAX ASSESSOR MAP FOR S3, T2S, R2W. QUARTER-QUARTER LINES ARE BASED ON THE FINAL PROOF MAP FOR THE CERT. 88122 WHICH MATCHES THE MAP FOR T-11071. ALTHOUGH THESE QUARTER-QUARTER LINES ARE OUT OF TRUE POSITION, THEY WERE UTILIZED SO THAT THIS MAP AND ACREAGES CORRESPOND TO THE PREVIOUS MAPS AND DOCUMENTS. THE MAP FOR T-11071 WAS USED TO DETERMINE EXISTING TVID AREAS PER T-11071.
 -WATER CONVEYANCE LINES SHALL BE ALL WITHIN THE PROPERTY AND THEREFORE ARE NOT SHOWN.
 -POD R-25.8 SERVICES LANDS TO THE NORTH AND POD R-25.5 SERVICES LANDS TO THE SOUTH OF THE RIVER.

LEGEND

- DONATION LAND CLAIM (DLC) CORNER
- SECTION CORNER
- POINT OF DIVERSION
- STREAM OR SURFACE DRAINAGE
- TAX LOT LINE
- SECTION LINE
- QUARTER-QUARTER LINE
- DLC LINES
- POINT OF DIVERSION

POD

- TO LANDS CERT 23038
- TO LANDS CERT. 23065
- TO LANDS CERT 88122 PRIMARY
- TO LANDS CERT. 88122 SUPPLEMENTAL
- EXISTING TVID PER T-11071



MAP BY:
ASPEN RURAL LAND CONSULTING
 ERIC URSTADT, PE, PLS
 971-250-1520
 Oct. 2020
 Hoffman4A