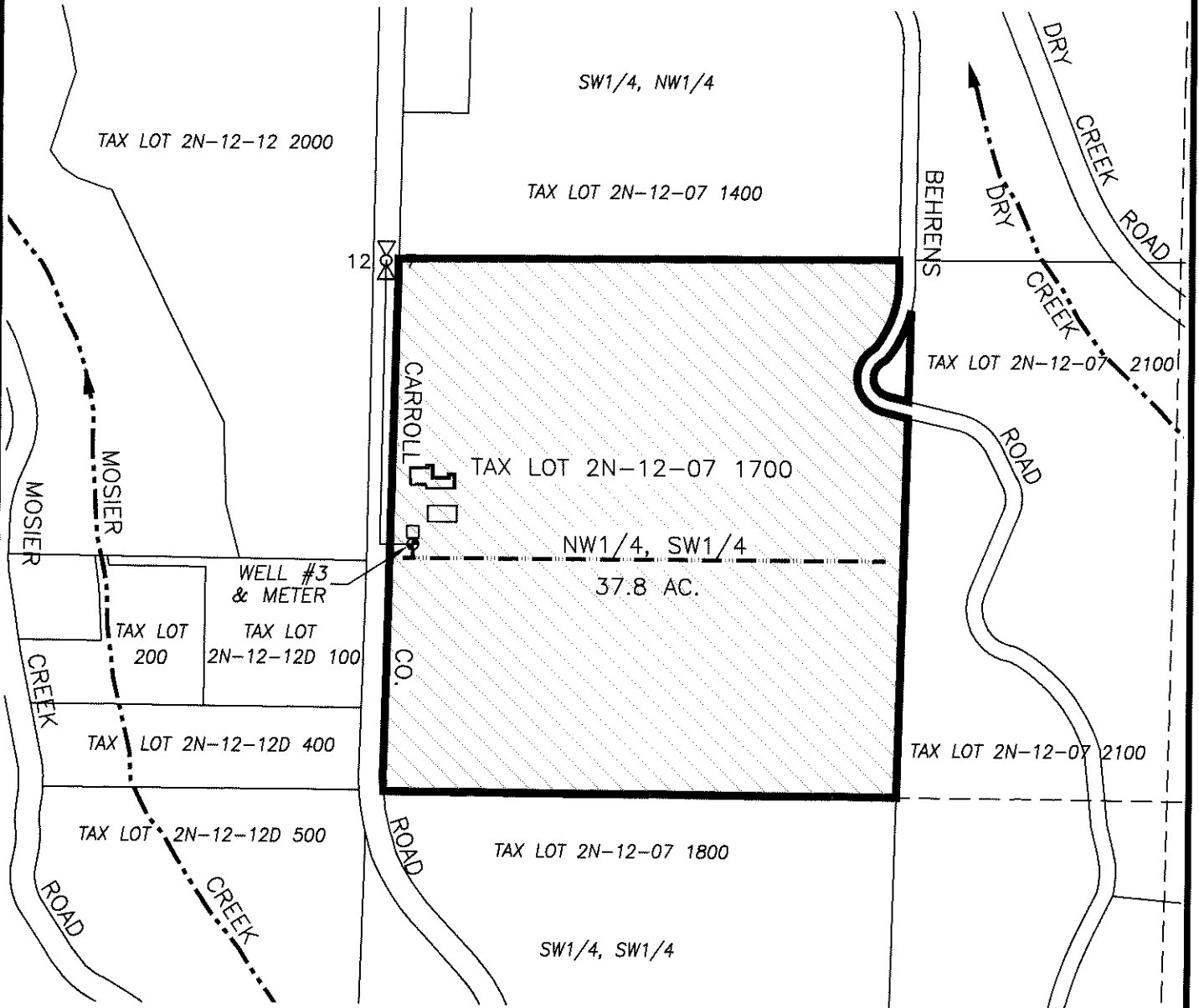





SECTION 7, TWP.2 N. RANGE 12 E. W.M.  
WASCO COUNTY, OREGON



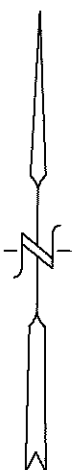
**LEGEND :**

- WELL #3 (WASC 52265): 705' SOUTH & 80' EAST FROM W1/4 CORNER, SECTION 7
-  IRRIGATION AREA = 37.8 ACRES
-  IRRIGATION MAIN
-  MOSIER CREEK WITH DIRECTIONAL FLOW

RECEIVED

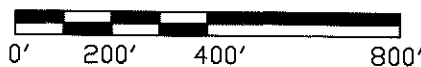
OCT 24 2019

OWRD



**CLAIM OF BENEFICIAL USE MAP**

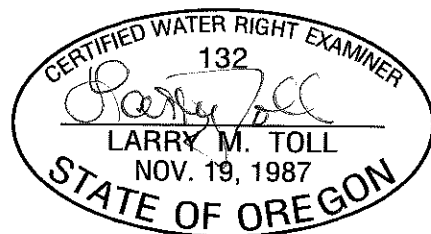
SCALE: 1" = 400'



TRANSFER No. 11952

IN THE NAME OF:  
DARIN MOLESWORTH

DATE: OCTOBER 17, 2019



EXPIRES: 06/30/2020

BY: **TENNESON ENGINEERING CORP.**  
3775 CRATES WAY  
THE DALLES, OREGON, 97058  
PH. 541-296-9177  
FAX 541-296-6657



**NOTE:**

"THIS MAP IS NOT INTENDED TO PROVIDE LEGAL DIMENSIONS OR LOCATIONS OF PROPERTY OWNERSHIP LINES."

W.O. #14424wr