

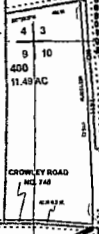
THIS MAP IS FOR ASSESSMENT AND TAXATION PURPOSES ONLY

SEC. 10 T.7S. R.4W. W.M.
Polk County
1" = 400'

7.4.10



See Map 7.4.4



See Map 7.4.8

See Map 7.4.3

See Map 7.4.3

3 2

McMahan Branch

13-25

13-17

Canceled No.

300
17.21 AC

600
151.41 AC

201
35.56 AC

100
58.90 AC

2030'

2190'

2270'

Pond #1

Pond #2

Pond #3

3150'

2630'

2360'

13-25

600

See Map 7.4.11

S.E. CORNER
RICHARD NEWMAN
D.L.C. NO. 48

602
9.82 AC

603
17.91 AC
Parcel 1

LOT 3
73.73 AC

LOT 4
21.90 AC

600
1.77 AC

600
1.50 AC

604
6.37 AC

600
175.56 AC

S.E. CORNER
WILLIAM H. GOODWIN
D.L.C. NO. 41

Goodwin Branch

1100
24.94 AC

1100
24.94 AC

N.W. CORNER
CLAM NO. 41

9 10

16 15

ANGLE CORNER
WILLIAM H. GOODWIN
D.L.C. NO. 41

See Map 7.4.15

601
2.22 AC

1002
4.67 AC

1000
5.22 AC

1100
24.94 AC

1100
24.94 AC

1100
24.94 AC

See Map 7.4.15

2/14/2019

7.4.10