

Butte Creek Mill Water Supply Security and Instream Transfer



Legend

- ★ Project Features
- Project Taxlots
- Jackson County Taxlots
- Conveyance Ditch
- Dewatered Reach (1800 ft)/Project Area

RECEIVED
FEB 14 2022
OWRD

Butte Creek Mill
Taxlot 361W03AA4501
42.47421, -122.79818

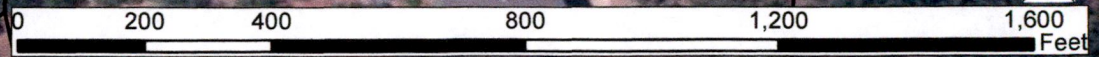
OWRD Gauge 14347798;
Ditch Measurement Location

C86767 POD and
New Instream Right (Point)
Location; 42.47677, -122.79283

OWRD Gauge 14347800;
Instream Right Measurement
Location

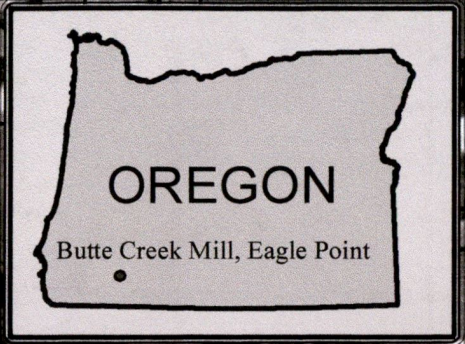
Fish Screen

Little Butte Creek



Source: Esri, DigitalGlobe, GeoEye, Earthstar Geographics, CNES/Airbus DS, USDA, USGS, AeroGRID, IGN, and the GIS User Community

Butte Creek Mill Water Supply Security and Instream Transfer

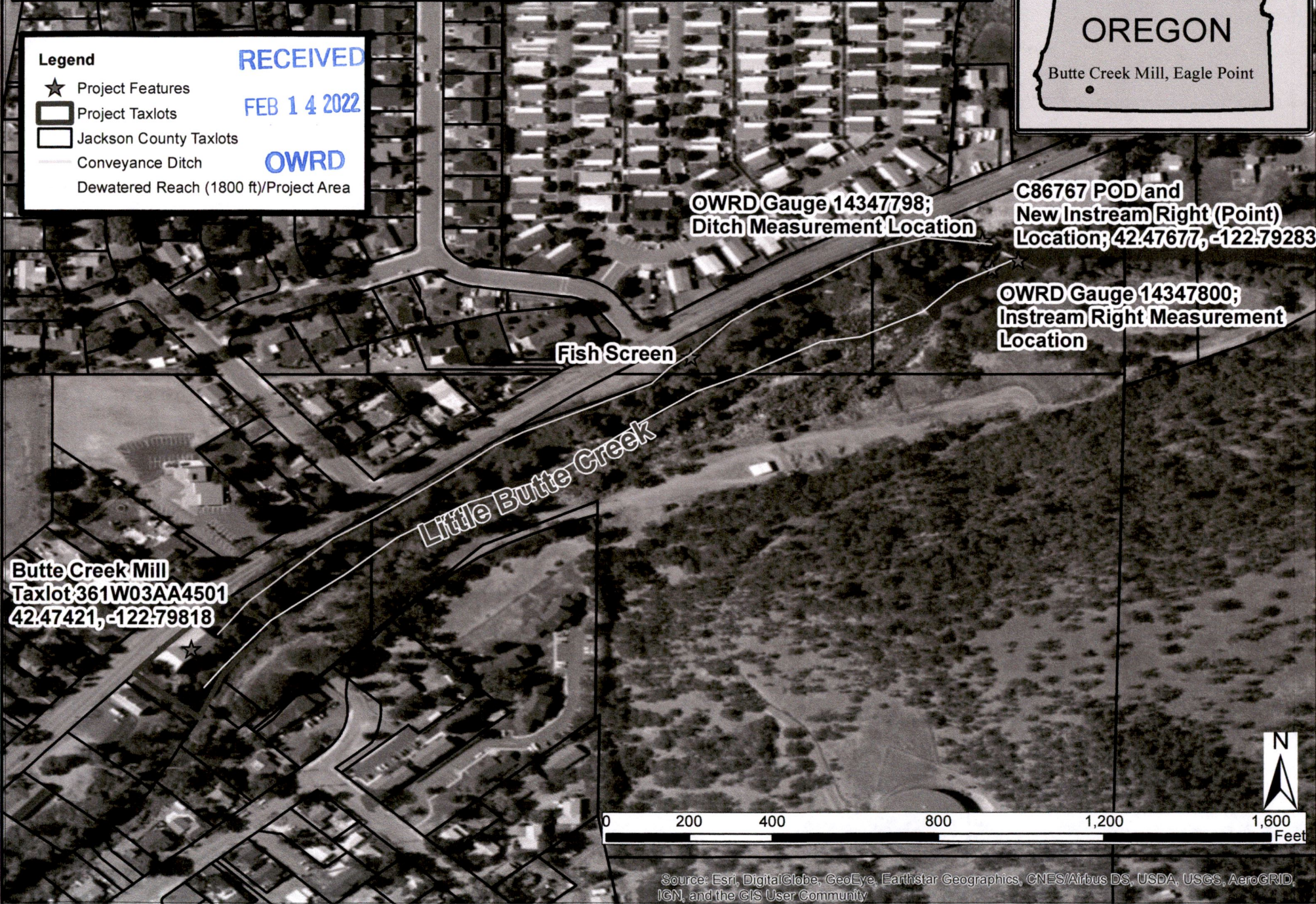


Legend

- ★ Project Features
- ▭ Project Taxlots
- ▭ Jackson County Taxlots
- Conveyance Ditch
- Dewatered Reach (1800 ft)/Project Area

RECEIVED
FEB 14 2022

OWRD



OWRD Gauge 14347798;
Ditch Measurement Location

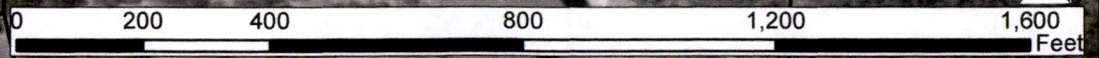
C86767 POD and
New Instream Right (Point)
Location; 42.47677, -122.79283

OWRD Gauge 14347800;
Instream Right Measurement
Location

Fish Screen

Little Butte Creek

Butte Creek Mill
Taxlot 361W03AA4501
42.47421, -122.79818



Source: Esri, DigitalGlobe, GeoEye, Earthstar Geographics, CNES/Airbus DS, USDA, USGS, AeroGRID, IGN, and the GIS User Community