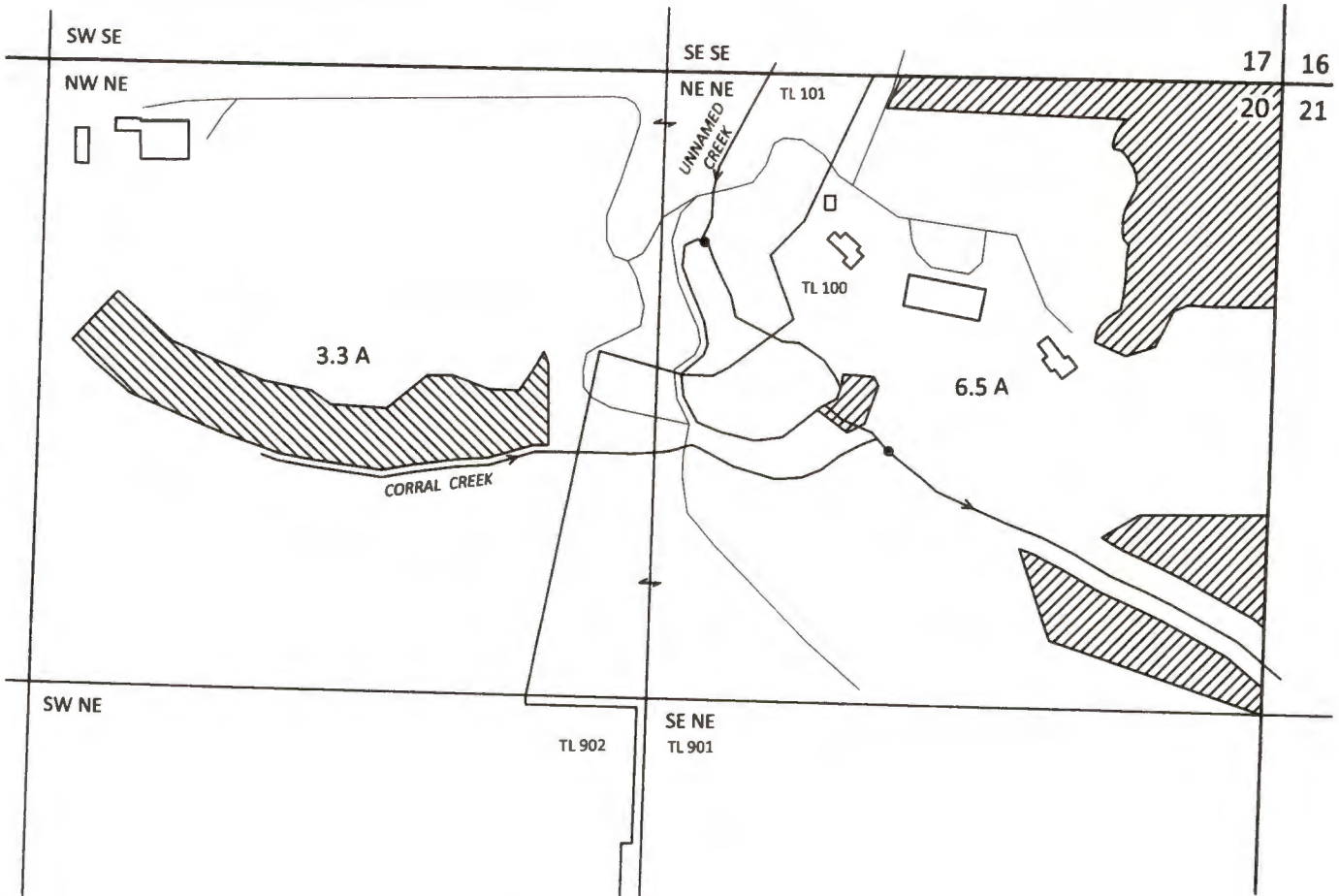


Section 20, T3S, R1W, W.M., Clackamas County




Transfer T-11996
CLAIM OF BENEFICIAL USE MAP
James A. Bisenius, Janet L. Bisenius and Bizzy B Seven LLC.

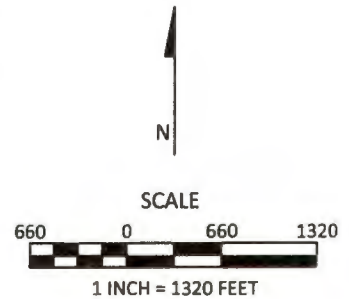


CORRAL CREEK POD: 780 FT S AND 850 FT W FROM NE CORNER OF SECTION 20, T3S, R1W, W.M.
UNNAMED CREEK POD: 330 FT S AND 1250 FT W FROM NE CORNER OF SECTION 20, T3S, R1W, W.M.



EXPLANATION

-  PLACE OF USE - IRRIGATION - 3.3 ACRES
UNNAMED CREEK SOURCE
PRIORITY: 5/28/1947
-  PLACE OF USE - IRRIGATION - 6.5 ACRES
CORRAL CREEK SOURCE
PRIORITY: 5/17/1947
-  POINT OF DIVERSION (POD)



Site Inspection Conducted:
December 10, 2021

KPFF 1700014.88

SKOOKUM
WATER ASSOCIATES INC

1626 VICTORIAN WAY
EUGENE, OR 97401
(503) 319-8926

January 6, 2022
RECEIVED
This map is not intended to provide legal dimensions or locations of property ownership lines

Figure 1