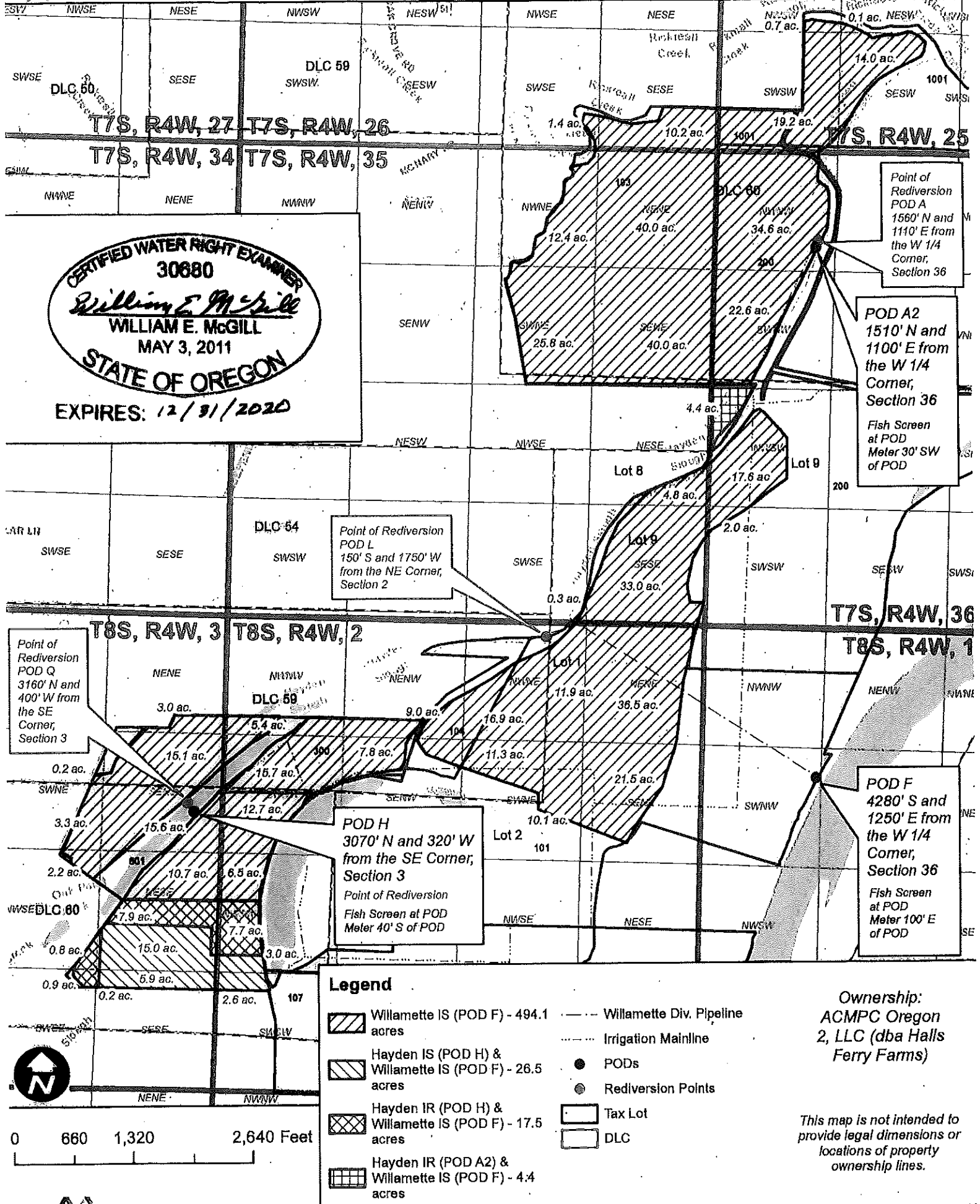


Application S-71058, Permit S-51684 - Claim of Beneficial Use



CERTIFIED WATER RIGHT EXAMINER
 30680
William E. McGill
WILLIAM E. MCGILL
 MAY 3, 2011
STATE OF OREGON
 EXPIRES: 12/31/2020

Point of Rediversion
 POD L
 150' S and 1750' W
 from the NE Corner,
 Section 2

Point of
 Rediversion
 POD A
 1560' N and
 1110' E from
 the W 1/4
 Corner,
 Section 36

POD A2
 1510' N and
 1100' E from
 the W 1/4
 Corner,
 Section 36
 Fish Screen
 at POD
 Meter 30' SW
 of POD

Point of
 Rediversion
 POD Q
 3160' N and
 400' W from
 the SE
 Corner,
 Section 3

POD H
 3070' N and 320' W
 from the SE Corner,
 Section 3
 Point of Rediversion
 Fish Screen at POD
 Meter 40' S of POD

POD F
 4280' S and
 1250' E from
 the W 1/4
 Corner,
 Section 36
 Fish Screen
 at POD
 Meter 100' E
 of POD

Legend

- Willamette IS (POD F) - 494.1 acres
- Hayden IS (POD H) & Willamette IS (POD F) - 26.5 acres
- Hayden IR (POD H) & Willamette IS (POD F) - 17.5 acres
- Hayden IR (POD A2) & Willamette IS (POD F) - 4.4 acres
- Willamette Div. Pipeline
- Irrigation Mainline
- PODs
- Rediversion Points
- Tax Lot
- DLC

Ownership:
 ACMPC Oregon
 2, LLC (dba Halls
 Ferry Farms)

*This map is not intended to
 provide legal dimensions or
 locations of property
 ownership lines.*