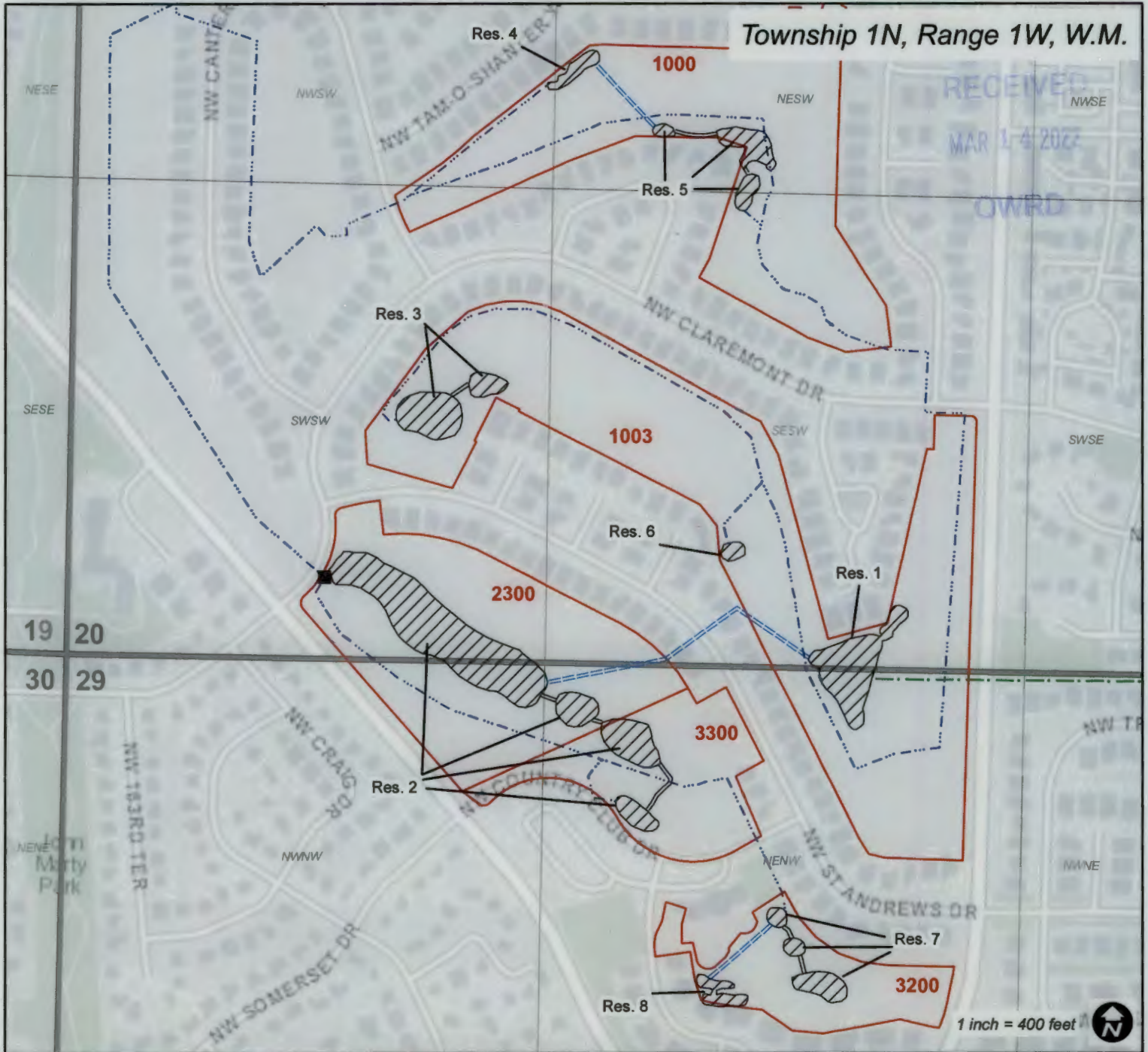
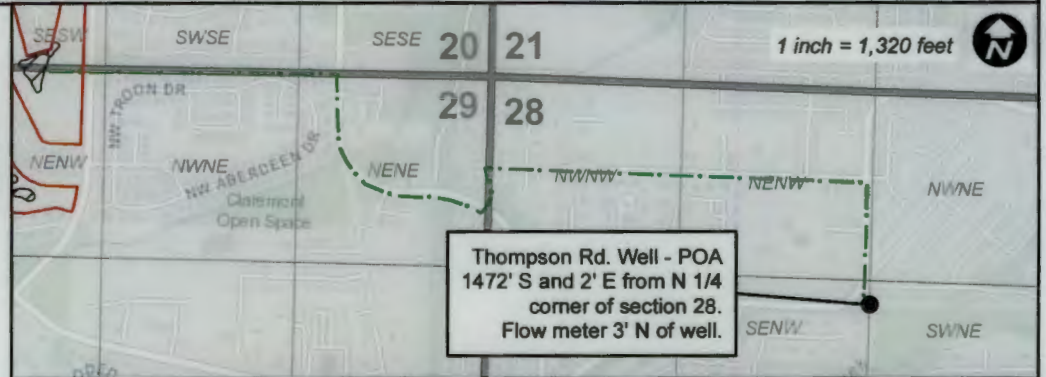


Claim of Beneficial Use - App. G-18856, Permit G-18517 - Claremont



CERTIFIED WATER RIGHT EXAMINER  
30680  
*William E. McGill*  
WILLIAM E. MCGILL  
MAY 3, 2011  
STATE OF OREGON

EXPIRES: 12-31-2022



Legend

- 6" Mainline from Well
- 4"-12" Irrigation Line
- ▨ POU
- Pond Pump House
- ==== Gravity Flow Pipe

This map is not intended to provide legal dimensions or locations of property ownership lines.