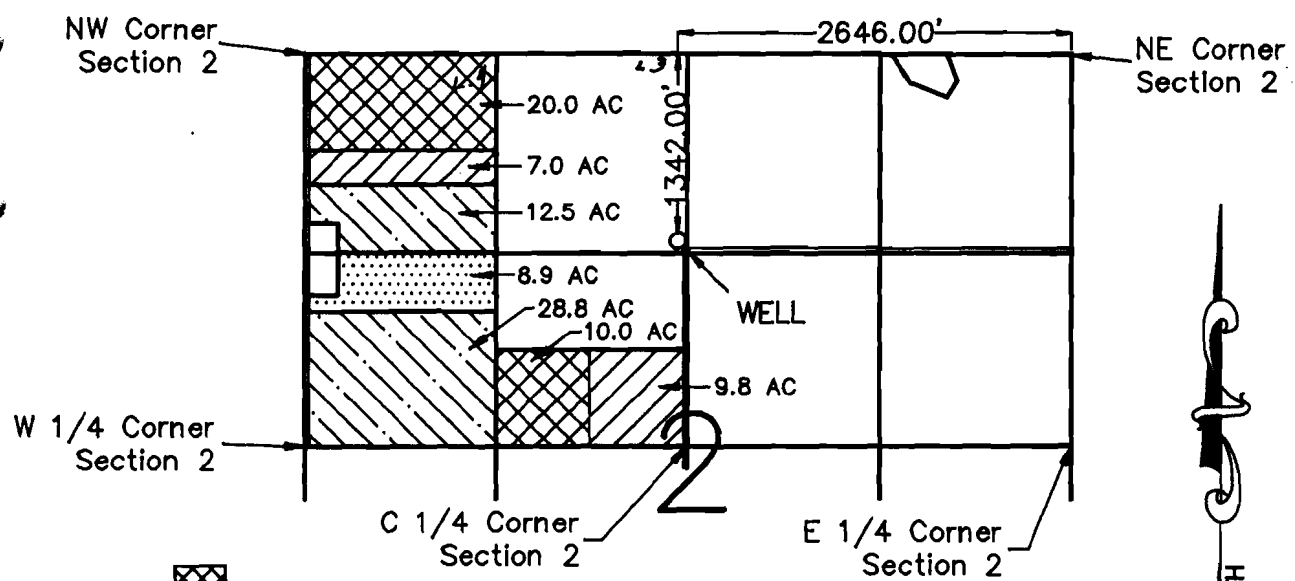





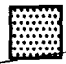
RECEIVED

OCT - 9 1992

WATER RESOURCES DIVISION
OREGON DEPARTMENT OF AGRICULTURE

**FINAL PROOF MAP:
CHANGE IN POINT OF APPROPRIATION
LLOYD MILES
LOCATED IN SECTION 2,
TOWNSHIP 27 SOUTH, RANGE 15 EAST,
WILLAMETTE MERIDIAN, IN
LAKE COUNTY, OREGON**



-  = C27430 PRIMARY
-  = C31369 PRIMARY
-  = C27427 PRIMARY
-  = C27427 SECONDARY *supplemental*

31369

T-6248 TOTAL IRRIGATED AREA = 97.0 ACRES



SCALE: 1"=1320'

I, Michael W. Tye, Certified Water Right Examiner in the State of Oregon, hereby certify that this final proof map was prepared under my direct supervision.

The preparation of this map is for the purpose of identifying the location of the water right only and has no intent to provide dimensions or locations of property ownership lines.



SCALE	1"=1320'	DATE	9-17-92	SURVEY BY	MT&BM	DRAWN BY	P.A.R.	ORDER NO.	3101A
-------	----------	------	---------	-----------	-------	----------	--------	-----------	-------

SUN COUNTRY ENGINEERING & SURVEYING, INC.
 61555 PARRELL ROAD BEND, OREGON 97702 PHONE 382-8882

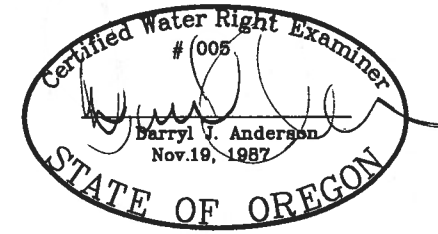
CLAIM OF BENEFICIAL USE MAP

FOR
LLOYD & REBECCA MILES
 SECTION 2, TOWNSHIP 27 SOUTH RANGE 15 EAST,
 LAKE COUNTY, OREGON

TRANSFER NO.
T-8588

- LEGEND**
- SECTION LINE
 - 1/4 SECTION LINE
 - - - 1/16 SECTION LINE
 - - - IRRIGATION MAIN LINE
 - - - WHEEL LINE

NOTE:
 PREPARATION OF THIS MAP IS FOR IDENTIFYING
 WATER RIGHTS ONLY. IT HAS NO INTENT TO PROVIDE
 LOCATIONS OR DIMENSIONS OF PROPERTY BOUNDARIES.



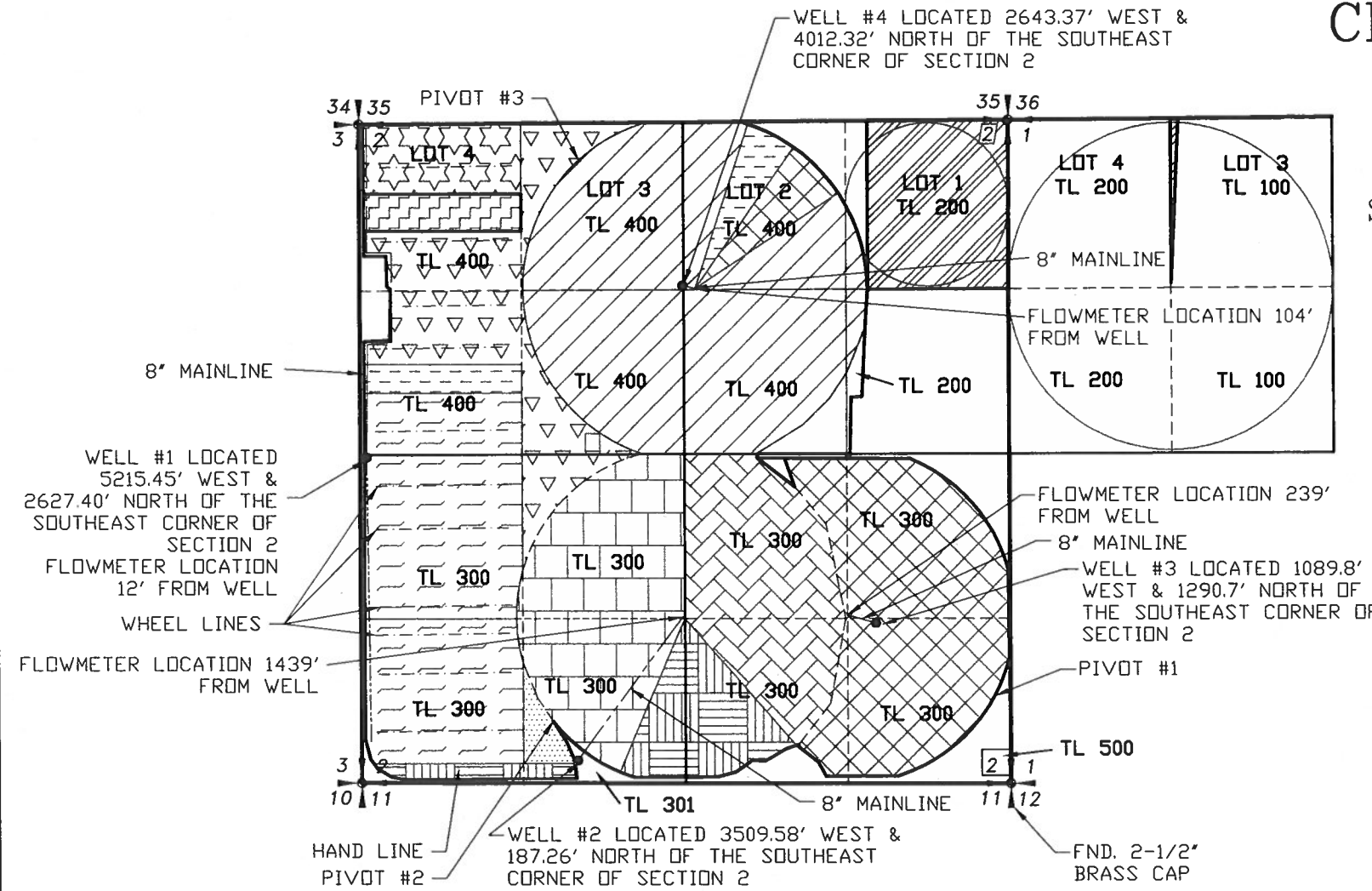
RENEWAL 12/31/19

SCALE: 1"=1320'

RECEIVED

JFC 17 2018

OWRD



WELL #4 LOCATED 2643.37' WEST &
 4012.32' NORTH OF THE SOUTHEAST
 CORNER OF SECTION 2

WELL #1 LOCATED
 5215.45' WEST &
 2627.40' NORTH OF THE
 SOUTHEAST CORNER OF
 SECTION 2
 FLOWMETER LOCATION
 12' FROM WELL

WELL #2 LOCATED 3509.58' WEST &
 187.26' NORTH OF THE SOUTHEAST
 CORNER OF SECTION 2

WELL #3 LOCATED 1089.8'
 WEST & 1290.7' NORTH OF
 THE SOUTHEAST CORNER OF
 SECTION 2

Acres Authorised and Claimed under T - 8588

Primary 561.17
 Supplemental 8.9

Certificate	31236						
Township	Range	Mer	Sec	Q-Q	GLot	Well #	Acres
27 S	15 E	WM	2	NW NE	2	4	8.35
27 S	15 E	WM	2	NE SE		3	32.9
27 S	15 E	WM	2	NW SE		3	6.03
27 S	15 E	WM	2	SW SE		3	4.9
27 S	15 E	WM	2	SE SE		3	31.72
Total Acres this Certificate							83.9

Certificate	72467						
Township	Range	Mer	Sec	Q-Q	Well #	Acres	
27 S	15 E	WM	2	NE SW	2	33.41	
27 S	15 E	WM	2	NW SW	2	0.31	
27 S	15 E	WM	2	SW SW	2	0.28	
27 S	15 E	WM	2	SE SW	2	24.45	
Total Acres this Certificate							58.45

Certificate	72465						
Township	Range	Mer	Sec	Q-Q	GLot	Well #	Acres
27 S	15 E	WM	2	NW NW	4	1	16.8

Certificate	72463						
Township	Range	Mer	Sec	Q-Q	Well #	Acres	
27 S	15 E	WM	2	NW SE	2	32.9	
27 S	15 E	WM	2	SW SE	2	17.3	
Total Acres this Certificate							50.2

Certificate	47919						
Township	Range	Mer	Sec	Q-Q	Well #	Acres	
27 S	15 E	WM	2	SW NW	1	14.75	
27 S	15 E	WM	2	NW SW	1	38.64	
27 S	15 E	WM	2	SW SW	1	33.71	
Total Acres this Certificate							87.1

Certificate	74297						
Township	Range	Mer	Sec	Q-Q	GLot	Well #	Acres
27 S	15 E	WM	2	NE NW	3	1	8.5
27 S	15 E	WM	2	NW NW	4	1	12.68
27 S	15 E	WM	2	SW NW		1	15.32
27 S	15 E	WM	2	SE NW		1	7.79
27 S	15 E	WM	2	NE SW		1	6.61
Total Acres this Certificate							50.9

Certificate	72468						
Township	Range	Mer	Sec	Q-Q	Well #	Acres	
27 S	15 E	WM	2	NW NE	4	6.66	
27 S	15 E	WM	2	SW NW	1	6.88	
Total Acres this Certificate							13.54

Certificate	74297 & 72465							
Township	Range	Mer	Sec	Q-Q	GLot	Well #	Primary Acres	Supplemental Acres
27 S	15 E	WM	2	NW NW	4	1	8.9	8.9
Total Acres this Certificate							8.9	8.9

Certificate	72464 Well #2						
Township	Range	Mer	Sec	Q-Q	Well #	Acres	
27 S	15 E	WM	2	SW SW	2	3.46	
27 S	15 E	WM	2	SE SW	2	9.05	
27 S	15 E	WM	2	SW SE	2	13.68	
Total Acres this Certificate							26.19

Certificate	41096						
Township	Range	Mer	Sec	Q-Q	GLot	Well #	Acres
27 S	15 E	WM	2	NE NE	1	4	1.81
27 S	15 E	WM	2	NW NE	2	4	21.15
27 S	15 E	WM	2	SW NE		4	35.63
27 S	15 E	WM	2	SE NE		4	1.77
27 S	15 E	WM	2	NE NW	3	4	32.45
27 S	15 E	WM	2	SE NW		4	31.69
Total Acres this Certificate							124.5

Certificate	76090 Place of use change only						
Township	Range	Mer	Sec	Q-Q	GLot	Well #	Acres
27 S	15 E	WM	1	NE NW		4	0.78
27 S	15 E	WM	2	NE NE	1	4	36.1
Total Acres this Certificate							36.88

Certificate	72464 Well #1						
Township	Range	Mer	Sec	Q-Q	GLot	Well #	Acres
27 S	15 E	WM	2	SE SW		#1	3.81
Total Acres this Certificate							3.81

REVISION	BY
2-6-2018	DA
4-17-2018	RC
12-12-2018	JEH

**ANDERSON ENGINEERING
 AND SURVEYING, INC.**
 P.O. BOX 28
 LAKEVIEW, OREGON
 97630
 (541) 947-4407
 FAX: 947-2321

FOR:
LLOYD MILES
 81341 BUICK LANE
 SILVER LAKE, OR
 97638

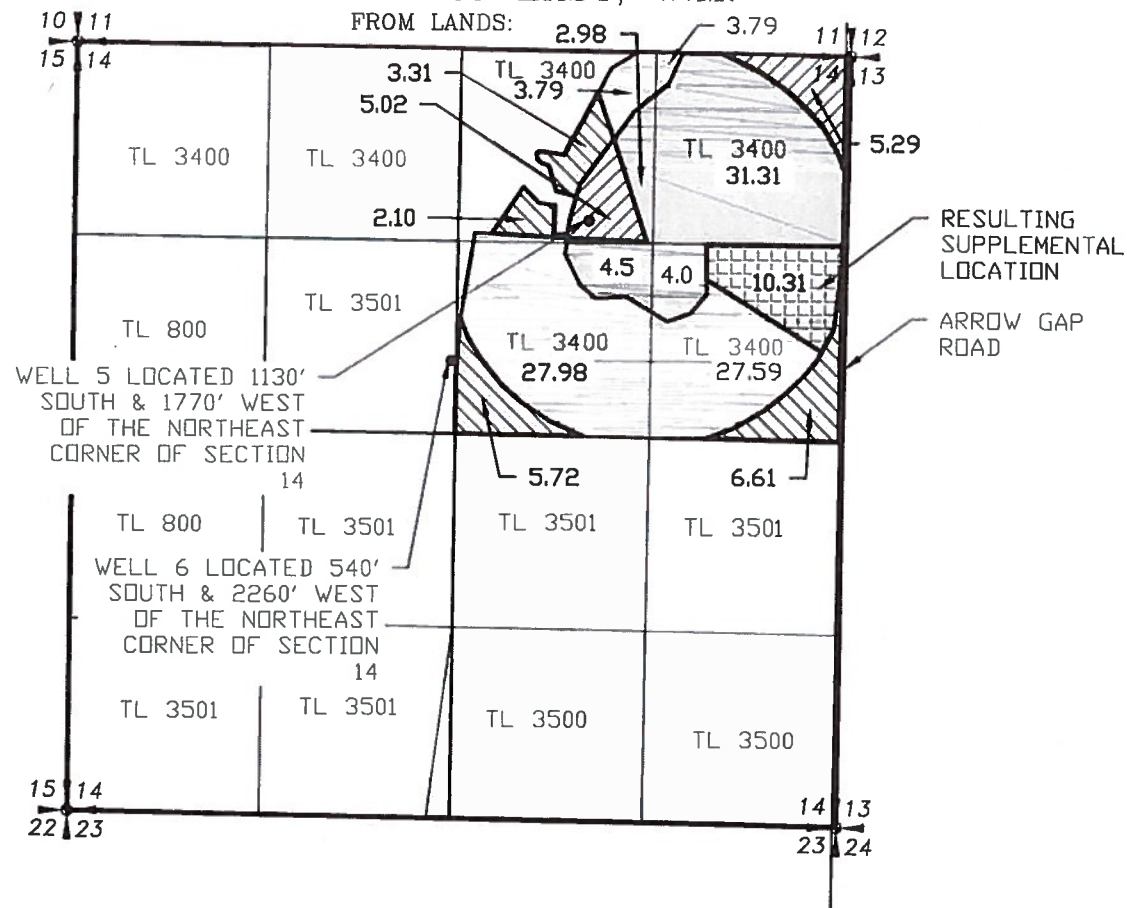
**CLAIM OF BENEFICIAL USE
 TRANSFER NO. T-8588**

DATE: 01-20-09
 SCALE: 1"=1320'
 DWG. BY: R.C.
 JOB: 2009-003
 FILE: 2009-003
 SHEET: 1 OF 1

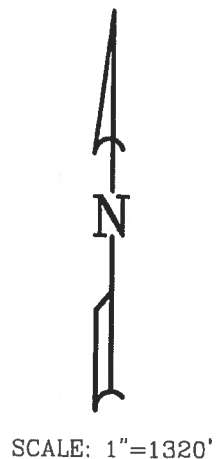
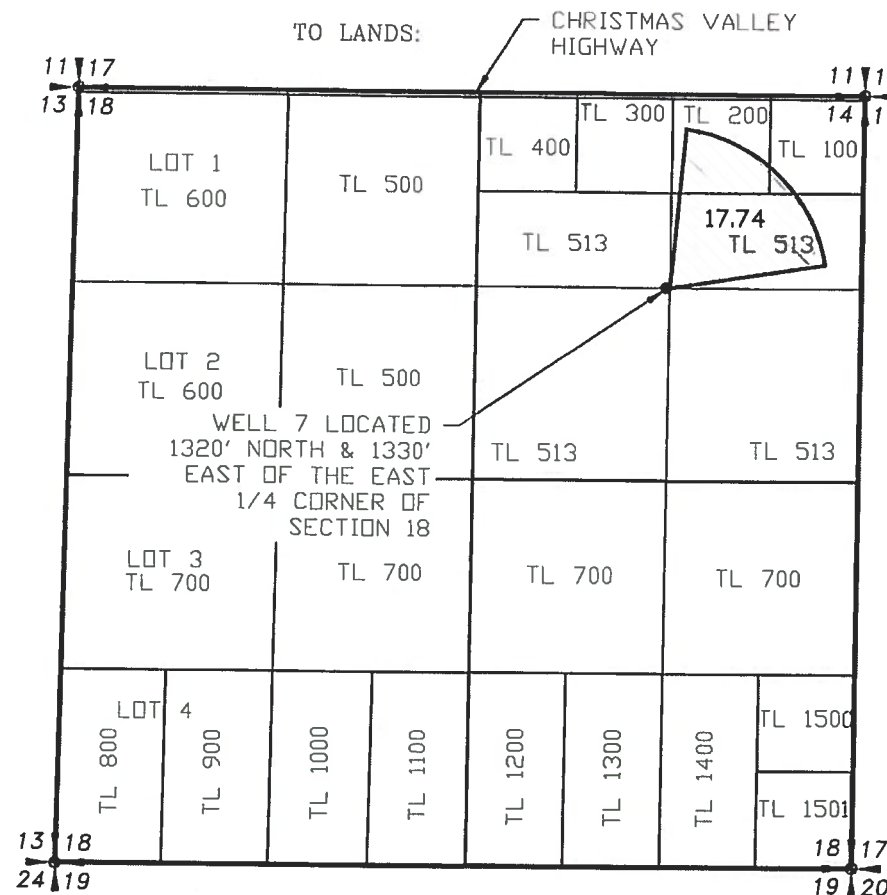
1159

CERTIFICATE 48608

SECTION 14, TOWNSHIP 27 SOUTH,
RANGE 15 EAST, W.M.



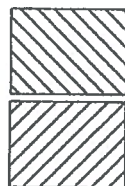
SECTION 18, TOWNSHIP 27 SOUTH,
RANGE 16 EAST, W.M.



- LEGEND**
- SECTION LINE
 - 1/4 SECTION LINE
 - - - 1/16 SECTION LINE

TO TRANSFER:

Certificate	48608	Priority	8/9/1976							
Township	Range	Mer	Sec	Q-Q	GLot	Well #	Primary Acres	Supplemental Acres	Primary cfs	
27 S	15 E	W2	14	NE NE	6	6	0.9	31.31	0.00	
27 S	15 E	W2	14	SW NE	6	6	3.79	2.98	0.00	
27 S	15 E	W2	14	SE NE	6	6	27.98	4.5	0.00	
27 S	15 E	W2	14	SE NE	6	6	27.59	4.0	0.00	
Total Acres this Certificate							17.74	10.31	0.22	0.22
										0.38



PRIMARY

SUPPLEMENTAL

TO REMAIN:

Certificate	48608	Priority	8/9/1976							
Township	Range	Mer	Sec	Q-Q	GLot	Well #	Primary Acres	Supplemental Acres	Primary cfs	
27 S	15 E	W2	14	NE NE	6	6	0.9	31.31	0.00	
27 S	15 E	W2	14	SW NE	6	6	3.79	2.98	0.00	
27 S	15 E	W2	14	SW NE	6	6	27.98	4.5	0.00	
27 S	15 E	W2	14	SE NE	6	6	27.59	4.0	0.00	
Total Acres this Certificate							60.26	41.79	0.75	0.63
										1.38



PRIMARY

SUPPLEMENTAL

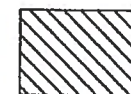
Received by OWRD

JUN 02 2020

Salem, OR

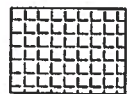
NEW LOCATION:

Certificate	48608	Priority	8/9/1976						
Township	Range	Mer	Sec	Q-Q	GLot	Well #	Primary Acres	Supplemental Acres	Primary cfs
27 S	16 E	W2	18	SE NE	7	7	17.74	0.22	0.22
Total Acres this Certificate							17.74	0.22	0.22

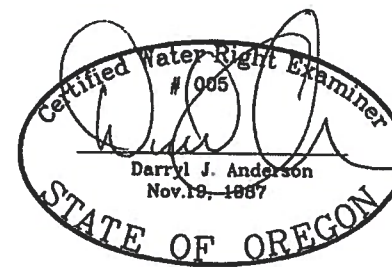


PRIMARY

Certificate	48608	Priority	8/9/1976						
Township	Range	Mer	Sec	Q-Q	GLot	Well #	Supplemental Acres	Supplemental cfs	Supplemental cfs
27 S	15 E	W2	14	SE NE	6	6	10.31	0.22	0.22
Total Acres this Certificate							10.31	0.22	0.22



SUPPLEMENTAL



RENEWAL 12/31/21

NOTE:
PREPARATION OF THIS MAP IS FOR IDENTIFYING WATER RIGHTS ONLY. IT HAS NO INTENT TO PROVIDE LOCATIONS OR DIMENSIONS OF PROPERTY BOUNDARIES.

REVISION	BY
5/28/2020	RC

ANDERSON ENGINEERING AND SURVEYING, INC.
P.O. BOX 28
LAKEVIEW, OREGON 97630
(541) 947-4407
FAX: 947-2321

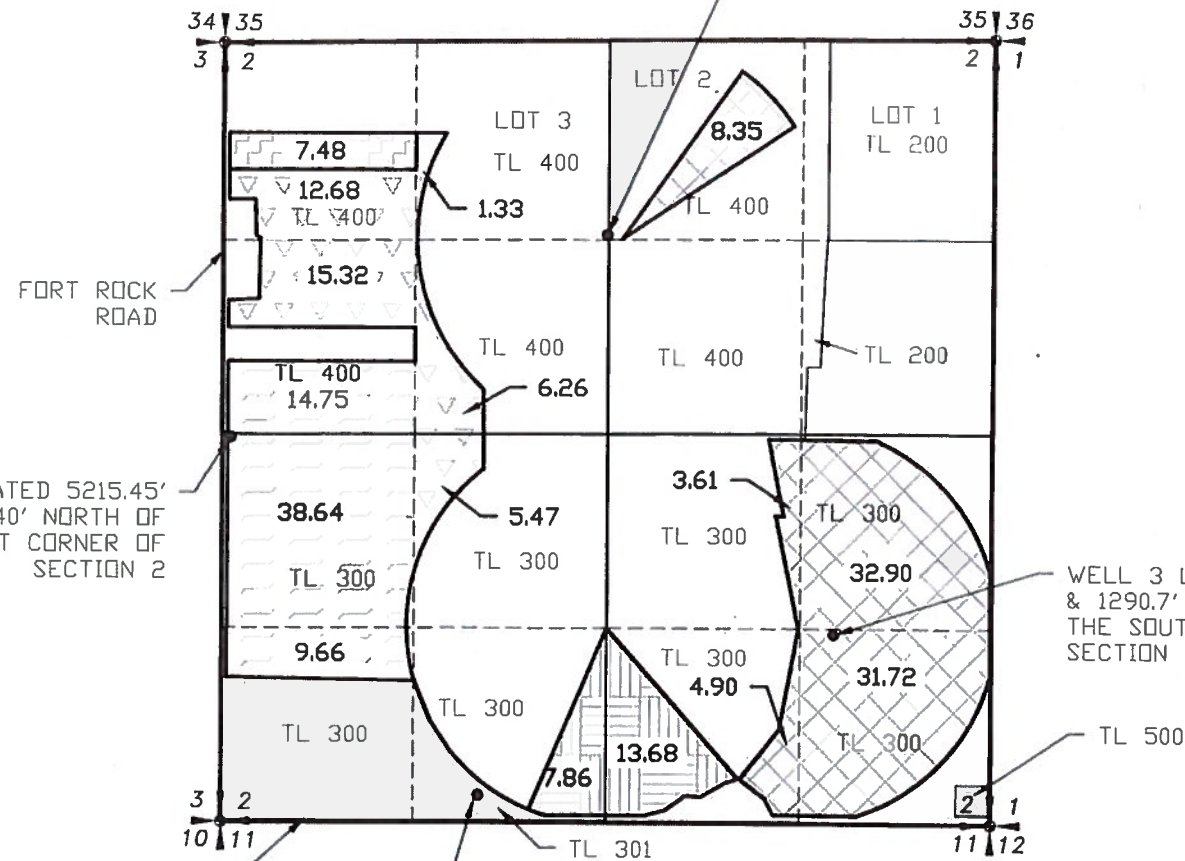
FOR: DANIEL & LEANNE MILES
81341 BUICK LANE
SILVER LAKE, OR 97688

MAP TO ACCOMPANY
TRANSFER APPLICATION
CERTIFICATE 48608

DATE:	04/15/20
SCALE:	1"=1320'
DWG. BY:	R.C.
JOB:	2019-083
FILE:	2019-083
SHEET:	1 OF 1

SECTION 2, TOWNSHIP 27 SOUTH,
RANGE 15 EAST, W.M.

WELL 4 LOCATED 2643.37'
WEST & 4012.32' NORTH OF
THE SOUTHEAST CORNER OF
SECTION 2



WELL 1 LOCATED 5215.45'
WEST & 2627.40' NORTH OF
THE SOUTHEAST CORNER OF
SECTION 2

WELL 3 LOCATED 1089.8' WE
& 1290.7' NORTH OF
THE SOUTHEAST CORNER OF
SECTION 2

WELL 2 LOCATED 3509.58'
WEST & 187.26' NORTH OF THE
SOUTHEAST CORNER OF
SECTION 2

SCALE: 1"=1320'

LEGEND
 — SECTION LINE
 — 1/4 SECTION LINE
 - - - 1/16 SECTION LINE

Certificate	94837	Priority	1/5/1950					
Township	Range	Mer	Sec	Q-Q	GLot	Well #	Acres	cf
27 S	15 E	W.M.	2	NWNE	2	4	8.35	0.104
27 S	15 E	W.M.	3	NESE	3	3	12.9	0.411
27 S	15 E	W.M.	3	SWSE	3	3	3.61	0.043
27 S	15 E	W.M.	3	SESE	3	3	4.9	0.063
27 S	15 E	W.M.	3	SESE	3	5	14.75	0.307
Total Acres this Certificate							81.19	1.019

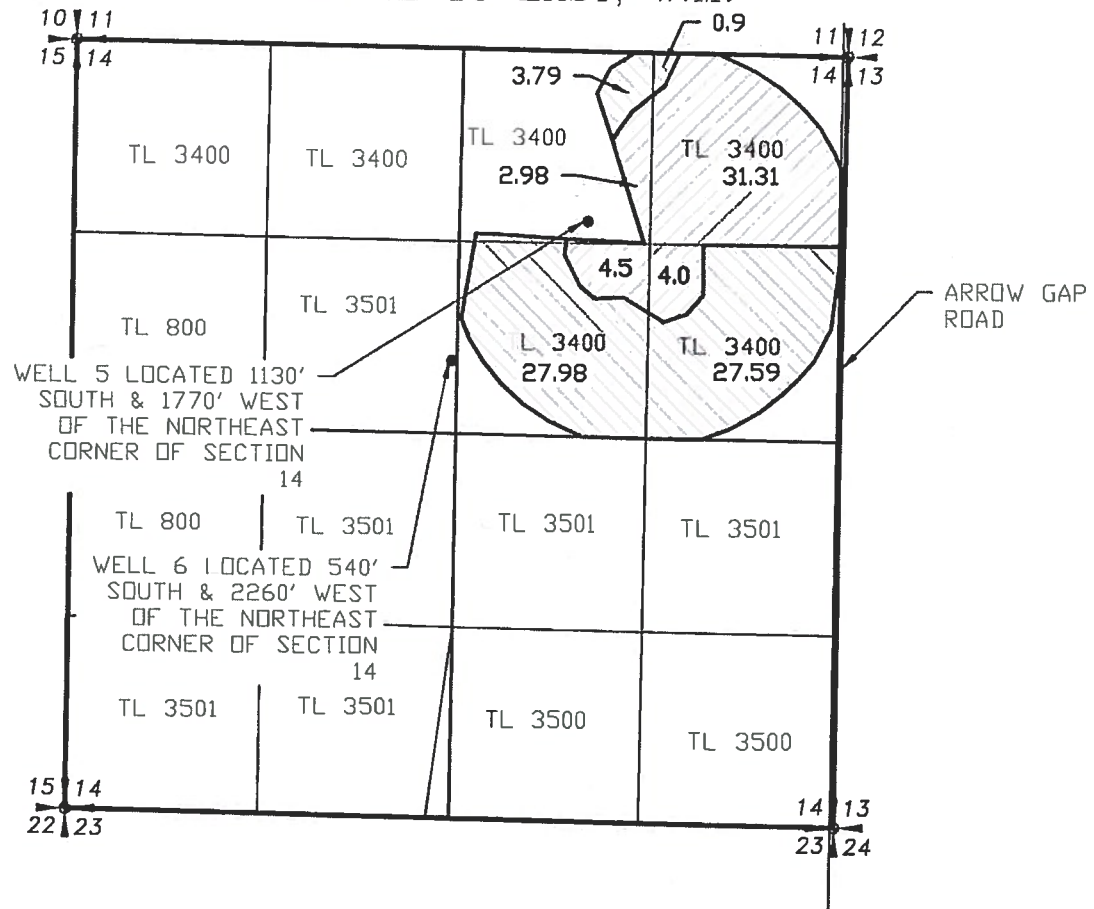
Certificate	94359	Priority	2/14/1974					
Township	Range	Mer	Sec	Q-Q	GLot	Well #	Acres	cf
27 S	15 E	W.M.	2	SWNW	1	1	14.75	0.18
27 S	15 E	W.M.	2	SWSW	1	1	38.64	0.48
27 S	15 E	W.M.	2	SWSW	1	1	9.66	0.13
Total Acres this Certificate							63.05	0.79

Certificate	94361	Priority	1/17/1955					
Township	Range	Mer	Sec	Q-Q	GLot	Well #	Acres	cf
27 S	15 E	W.M.	2	SESW	2	2	7.86	0.10
27 S	15 E	W.M.	2	SWSE	2	2	13.68	0.17
Total Acres this Certificate							21.54	0.27

Certificate	94362	Priority	4/10/1956							
Township	Range	Mer	Sec	Q-Q	GLot	Well #	Primary Acres	Supplemental Acres	Primary cfs	Supplemental cfs
27 S	15 E	W.M.	2	SWNW	4	1	0	7.18	0.00	0.00
Total Acres this Certificate							0	7.18	0.00	0.00
							Total cfs	0.09		

Certificate	94365	Priority	2/6/1959					
Township	Range	Mer	Sec	Q-Q	GLot	Well #	Acres	cf
27 S	15 E	W.M.	2	NESE	3	1	1.33	0.02
27 S	15 E	W.M.	2	SWNW	2	1	2.16	0.03
27 S	15 E	W.M.	2	SWNW	1	1	12.32	0.16
27 S	15 E	W.M.	2	SESW	1	1	6.26	0.08
27 S	15 E	W.M.	2	NESE	1	1	4.9	0.06
Total Acres this Certificate							48.24	0.41

SECTION 14, TOWNSHIP 27 SOUTH,
RANGE 15 EAST, W.M.



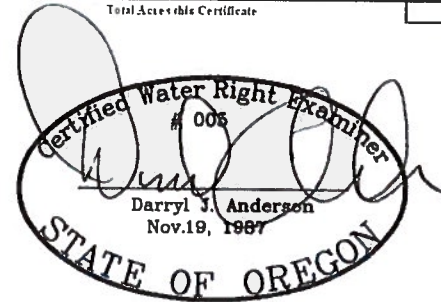
WELL 5 LOCATED 1130'
SOUTH & 1770' WEST
OF THE NORTHEAST
CORNER OF SECTION
14

WELL 6 LOCATED 540'
SOUTH & 2260' WEST
OF THE NORTHEAST
CORNER OF SECTION
14

Certificate	48608	Priority	8/9/1976							
Township	Range	Mer	Sec	Q-Q	GLot	Well #	Primary Acres	Supplemental Acres	Primary cfs	Supplemental cfs
27 S	15 E	W.M.	14	SENE	6	0	0.0	31.31	0.01	0.34
27 S	15 E	W.M.	14	SENE	6	0	0	0.0	0.0	0.0
27 S	15 E	W.M.	14	SWNE	6	0	27.98	4.0	0.3	0.4
27 S	15 E	W.M.	14	SENE	6	0	37.50	4.0	0.3	0.4
Total Acres this Certificate							60.16	42.79	0.75	0.54
							Total cfs		1.29	

Certificate	35750	Priority	11/6/1958					
Township	Range	Mer	Sec	Q-Q	GLot	Well #	Acres	cf
27 S	15 E	W.M.	14	NESE	5	5	31.31	0.39
27 S	15 E	W.M.	14	SWNE	5	5	2.98	0.03
27 S	15 E	W.M.	14	SWNE	5	5	4.0	0.05
27 S	15 E	W.M.	14	SENE	5	5	1.0	0.01
Total Acres this Certificate							42.79	0.53

PRIMARY
 SUPPLEMENTAL



Received by OWRD

JUN 02 2020

Salem, OR

NOTE:
PREPARATION OF THIS MAP IS FOR
IDENTIFYING WATER RIGHTS ONLY. IT
HAS NO INTENT TO PROVIDE
LOCATIONS OR DIMENSIONS OF
PROPERTY BOUNDARIES.

REVISION	BY
5/28/2020	RC

**ANDERSON ENGINEERING
AND SURVEYING, INC.**
 P.O. BOX 28
 LAKEVIEW, OREGON 97630
 (541) 947-4407
 FAX: 947-2321

FOR:
DANIEL & LEANNE MILES
 81341 BUCK LANE
 SILVER LAKE, OR
 97638

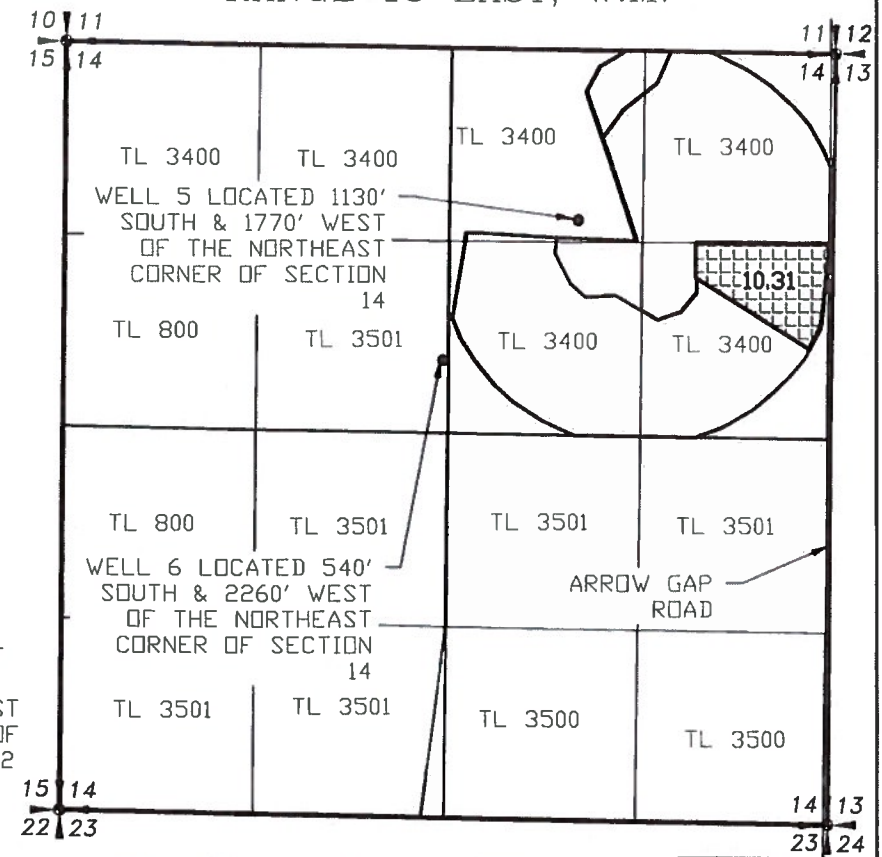
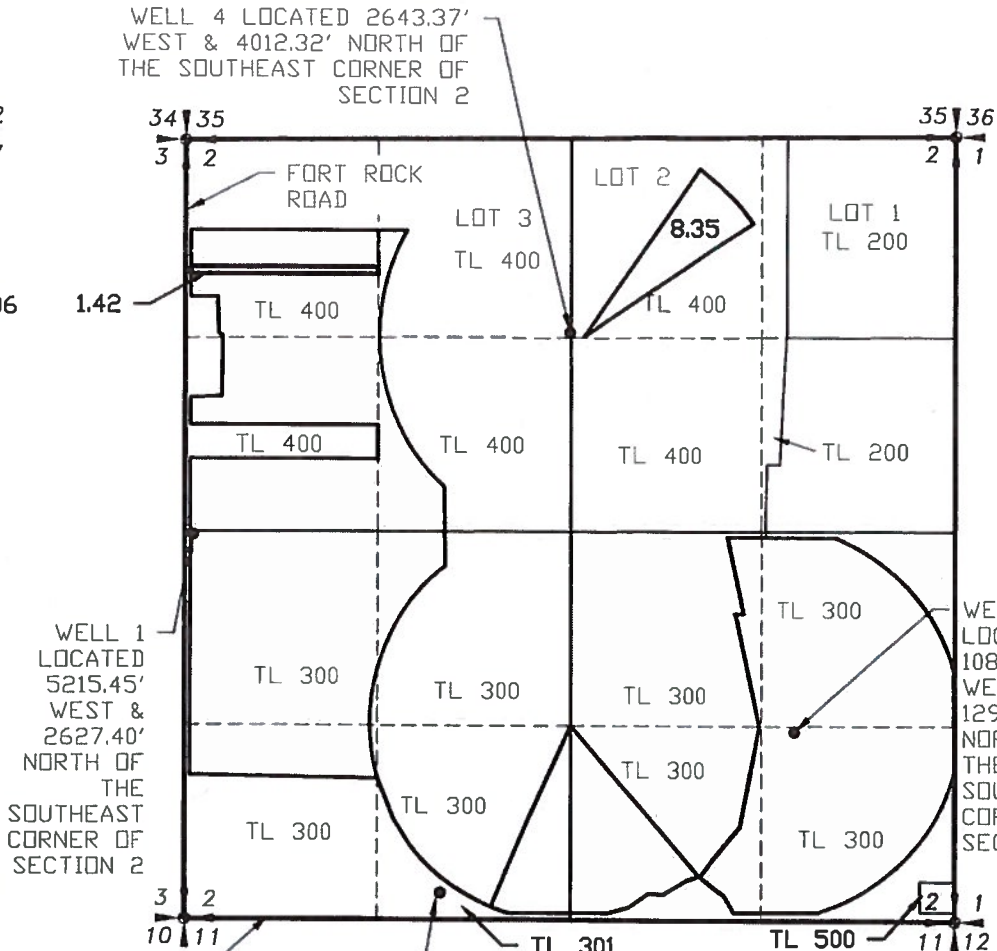
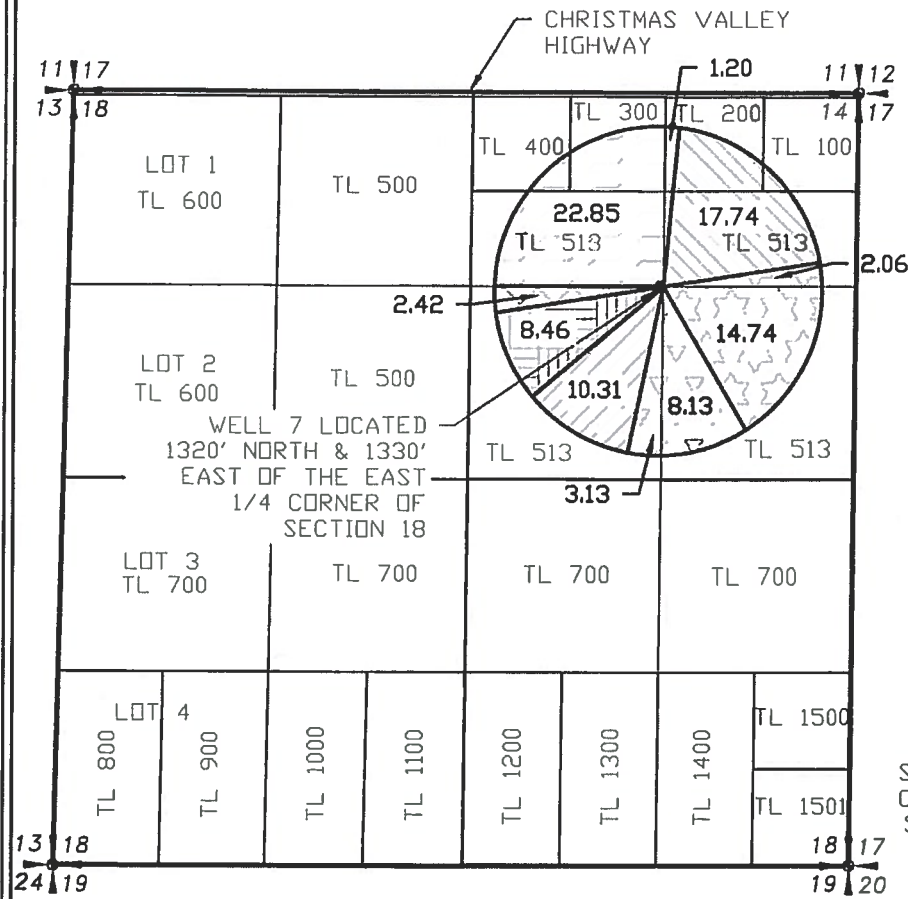
**MAP TO ACCOMPANY
TRANSFER APPLICATION
AREAS TO REMAIN**

DATE:	04/15/20
SCALE:	1"=1320'
DWG. BY:	R.C.
JOB:	2019-083
FILE:	2019-083
SHEET:	4 OF 4

SECTION 18, TOWNSHIP 27 SOUTH,
RANGE 16 EAST, W.M.

SECTION 2, TOWNSHIP 27 SOUTH,
RANGE 15 EAST, W.M.

SECTION 14, TOWNSHIP 27 SOUTH,
RANGE 15 EAST, W.M.



Certificate	Range	Mer	Sec	Q-Q	GLot	Well #	Acres	cfs	
94357	16E	W3/4	18	SW-NE	7	?	2.42	0.01	
94357	16E	W3/4	18	SE-NE	7	?	8.46	0.01	
Total Acres this Certificate								2.42	0.020

Certificate	Range	Mer	Sec	Q-Q	GLot	Well #	Acres	cfs	
94359	16E	W3/4	18	NE-NE	7	?	1.7	0.01	
94359	16E	W3/4	18	NW-NE	7	?	22.8	0.26	
Total Acres this Certificate								24.05	0.34

Certificate	Range	Mer	Sec	Q-Q	GLot	Well #	Acres	cfs	
94361	16E	W3/4	18	SW-NE	7	?	8.46	0.14	
Total Acres this Certificate								8.46	0.14

Certificate	Range	Mer	Sec	Q-Q	GLot	Well #	Primary Acres	Primary cfs	
94362	16E	W3/4	18	NE-NE	7	?	7.00	0.05	
94362	16E	W3/4	18	SE-NE	7	?	14.74	0.18	
Total Acres this Certificate								16.6	0.23

Certificate	Range	Mer	Sec	Q-Q	GLot	Well #	Acres	cfs	
94365	16E	W3/4	18	SW-NE	7	?	8.13	0.11	
94365	16E	W3/4	18	SE-NE	7	?	3.13	0.04	
Total Acres this Certificate								11.26	0.14

Certificate	Range	Mer	Sec	Q-Q	GLot	Well #	Primary Acres	Primary cfs	
49608	16E	W3/4	18	NE-NE	7	?	17.74	0.23	
Total Acres this Certificate								17.74	0.23

Certificate	Range	Mer	Sec	Q-Q	GLot	Well #	Acres	cfs	
35750	16E	W3/4	18	SW-NE	7	?	10.31	0.13	
Total Acres this Certificate								10.31	0.13

Certificate	Range	Mer	Sec	Q-Q	GLot	Well #	Supplemental Acres	Supplemental cfs	
94362	16E	W3/4	18	SW-NE	7	?	1.42	0.02	
Total Acres this Certificate								1.42	0.02

Certificate	Range	Mer	Sec	Q-Q	GLot	Well #	Supplemental Acres	Supplemental cfs	
49608	16E	W3/4	18	NE-NE	7	?	10.31	0.13	
Total Acres this Certificate								10.31	0.13

- LEGEND**
- SECTION LINE
 - 1/4 SECTION LINE
 - 1/16 SECTION LINE



RENEWAL 12/31/21

Received by OWRD

JUN 02 2020

Salem, OR

SCALE: 1"=1320'

NOTE:
PREPARATION OF THIS MAP IS FOR IDENTIFYING WATER RIGHTS ONLY. IT HAS NO INTENT TO PROVIDE LOCATIONS OR DIMENSIONS OF PROPERTY BOUNDARIES.

REVISION	BY
5/28/2020	RC

ANDERSON ENGINEERING AND SURVEYING, INC.
P.O. BOX 28
LAKEVIEW, OREGON 97630
(541) 947-4407
FAX: 947-2321

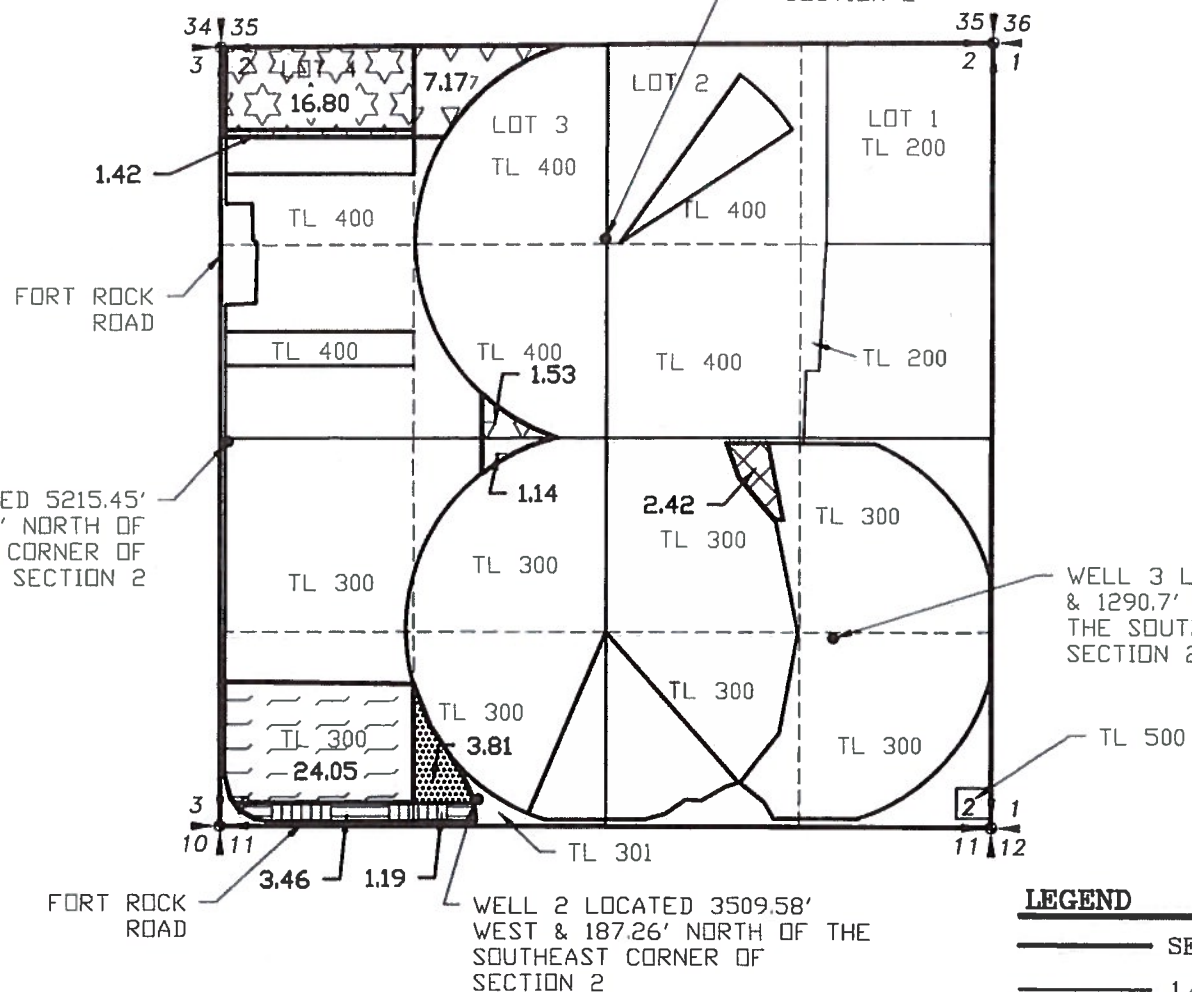
FOR:
DANIEL & LEANNE MILES
81841 BUICK LANE
SILVER LAKE, OR 97638

MAP TO ACCOMPANY
TRANSFER APPLICATION
RESULTING LOCATIONS

DATE:	04/15/20
SCALE:	1"=1320'
DWG. BY:	R.C.
JOB:	2019-083
FILE:	2019-083
SHEET:	3 OF 4

SECTION 2, TOWNSHIP 27 SOUTH,
RANGE 15 EAST, W.M.

WELL 4 LOCATED 2643.37'
WEST & 4012.32' NORTH OF
THE SOUTHEAST CORNER OF
SECTION 2



SCALE: 1"=1320'

- LEGEND**
- SECTION LINE
 - 1/4 SECTION LINE
 - - - 1/16 SECTION LINE

Certificate	94357	Priority	1/5/1950					
Township	Range	Mer	Sec	Q-Q	GLot	Well #	Acres	cfs
27 S	15 E	W.M.	14	NE	1	1	2.42	0.030
Total Acres this Certificate							2.42	0.030

Certificate	94362	Priority	4/10/1956							
Township	Range	Mer	Sec	Q-Q	GLot	Well #	Primary Acres	Supplemental Acres	Primary cfs	Supplemental cfs
27 S	15 E	W.M.	14	NW	4	1	16.2	1.42	0.21	0.05
Total Acres this Certificate							16.2	1.42	0.21	0.05
									0.23	

Certificate	94359	Priority	2/14/1974					
Township	Range	Mer	Sec	Q-Q	GLot	Well #	Acres	cfs
27 S	15 E	W.M.	14	SW	1	1	24.05	0.31
Total Acres this Certificate							24.05	0.30

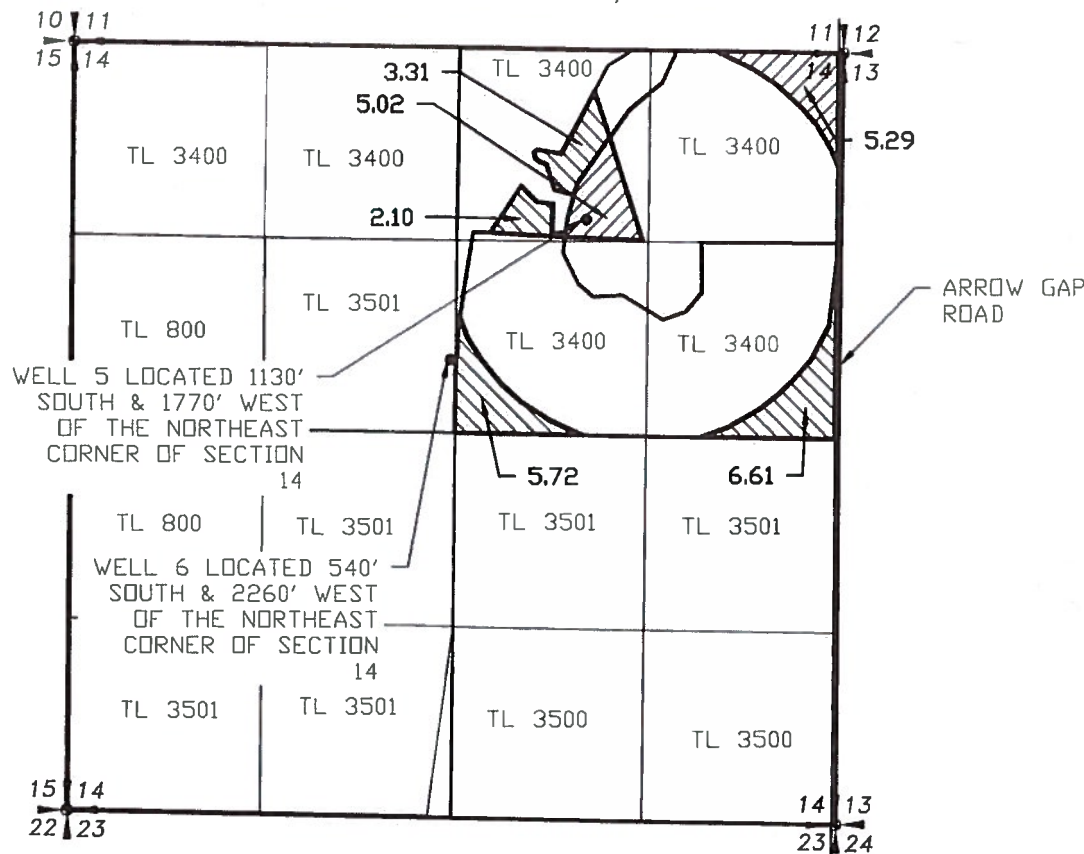
Certificate	94361	Priority	1/17/1955					
Township	Range	Mer	Sec	Q-Q	GLot	Well #	Acres	cfs
27 S	15 E	W.M.	14	SW	1	1	3.40	0.04
27 S	15 E	W.M.	14	SE	1	1	1.19	0.01
27 S	15 E	W.M.	14	SE	1	1	3.61	0.01
Total Acres this Certificate							8.20	0.11

WELL 1

WELL 2

Certificate	94365	Priority	7/6/1959					
Township	Range	Mer	Sec	Q-Q	GLot	Well #	Acres	cfs
27 S	15 E	W.M.	14	NE	1	1	7.17	0.08
27 S	15 E	W.M.	14	NW	1	1	1.4	0.01
27 S	15 E	W.M.	14	SE	1	1	1.52	0.02
27 S	15 E	W.M.	14	SE	1	1	11.4	0.01
Total Acres this Certificate							11.56	0.13

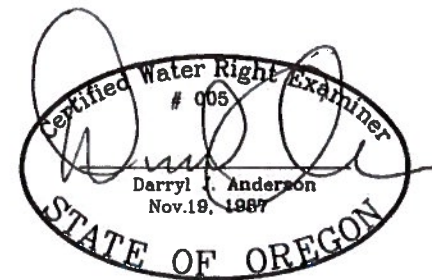
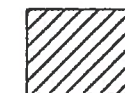
SECTION 14, TOWNSHIP 27 SOUTH,
RANGE 15 EAST, W.M.



Certificate	48608	Priority	8/9/1976							
Township	Range	Mer	Sec	Q-Q	GLot	Well #	Primary Acres	Supplemental Acres	Primary cfs	Supplemental cfs
27 S	15 E	W.M.	14	NE	14	6	0	0	0	0
27 S	15 E	W.M.	14	NW	14	6	4.41	4.02	0.0	0.24
27 S	15 E	W.M.	14	SW	14	6	2.73	0	0.0	0.01
27 S	15 E	W.M.	14	SE	14	6	0.63	0	0.00	0.1
Total Acres this Certificate							17.74	10.31	0.32	0.13
									0.32	0.13

- PRIMARY
- SUPPLEMENTAL

Certificate	35750	Priority	11/6/1958					
Township	Range	Mer	Sec	Q-Q	GLot	Well #	Acres	cfs
27 S	15 E	W.M.	14	NE	14	6	5.29	
27 S	15 E	W.M.	14	NW	14	6	5.07	
Total Acres this Certificate							10.31	0.13



RENEWAL 12/31/21

Received by OWRD

JUN 02 2020

Salem, OR

NOTE:
PREPARATION OF THIS MAP IS FOR
IDENTIFYING WATER RIGHTS ONLY. IT
HAS NO INTENT TO PROVIDE
LOCATIONS OR DIMENSIONS OF
PROPERTY BOUNDARIES.

REVISION	BY
5/28/2020	RC

**ANDERSON ENGINEERING
AND SURVEYING, INC.**
P.O. BOX 28
LAKEVIEW, OREGON
97630
(541) 947-4407
FAX: 947-2321

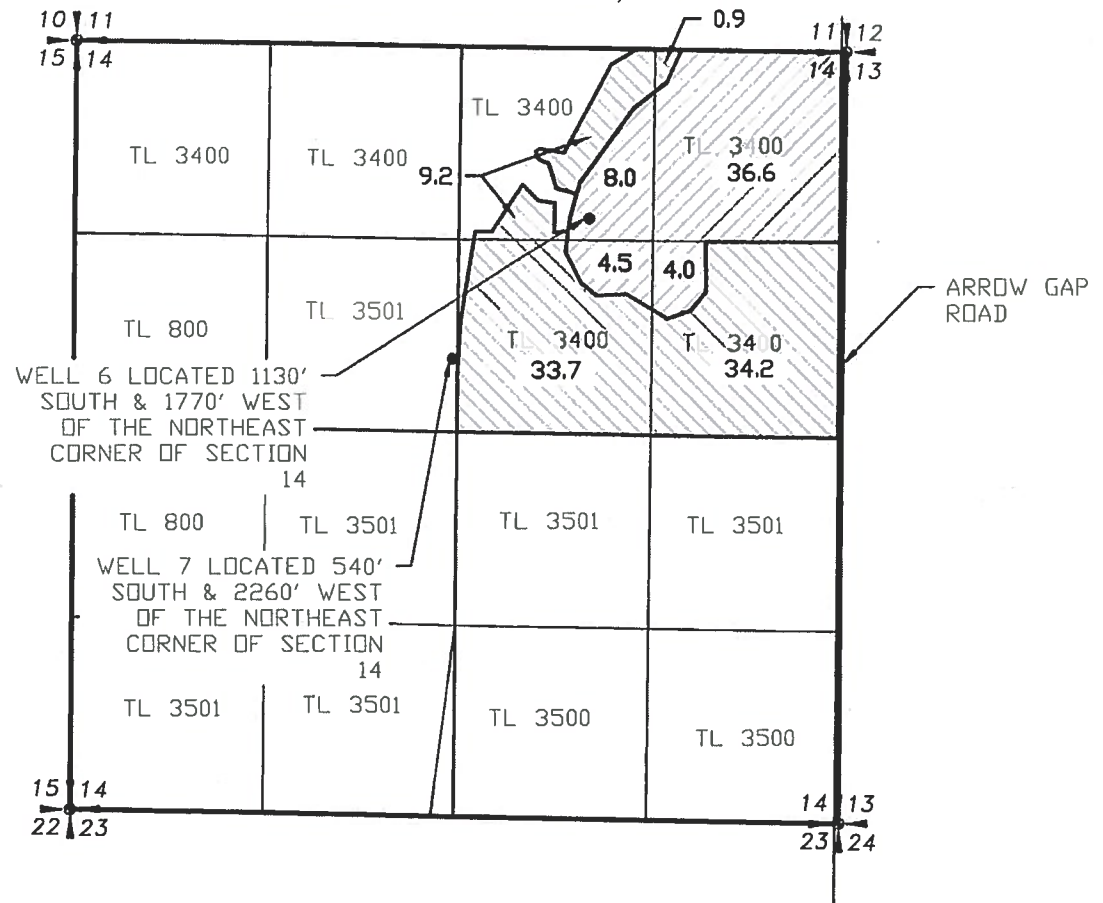
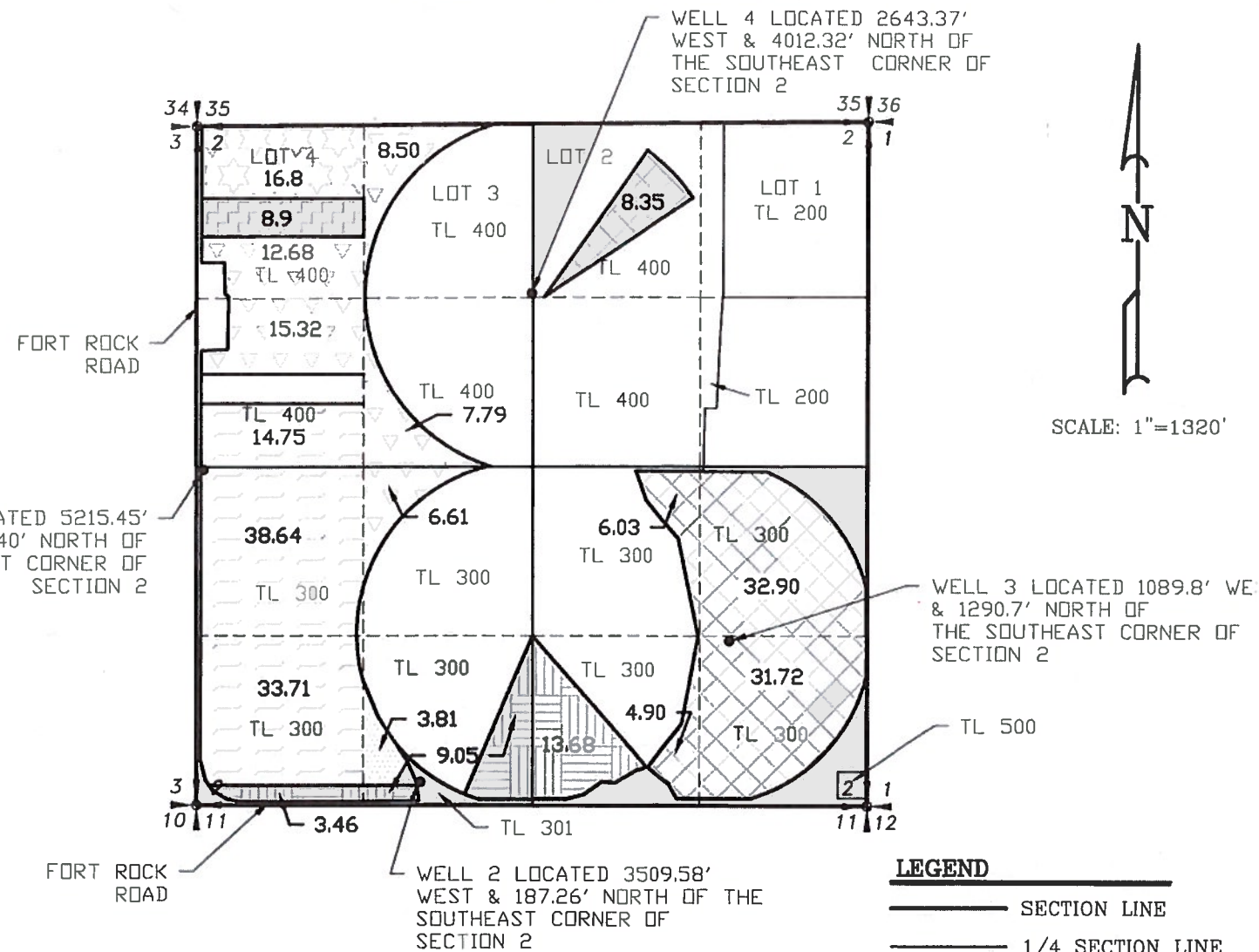
FOR:
DANIEL & LEANNE MILES
81341 BUICK LANE
SILVER LAKE, OR
97688

MAP TO ACCOMPANY
TRANSFER APPLICATION
AREAS TO TRANSFER

DATE:	04/15/20
SCALE:	1"=1320'
DWG. BY:	R.C.
JOB:	2019-083
FILE:	2019-083
SHEET:	2 OF 4

SECTION 2, TOWNSHIP 27 SOUTH,
RANGE 15 EAST, W.M.

SECTION 14, TOWNSHIP 27 SOUTH,
RANGE 15 EAST, W.M.



LEGEND

— SECTION LINE

— 1/4 SECTION LINE

- - - 1/16 SECTION LINE

Certificate	48608	Priority	8/9/1976							
Township	Range	Mer	Sec	Q-Q	GLot	Well #	Primary Acres	Supplemental Acres	Primary cfs	Supplemental cfs
27 S	15 E	WM	14	NNE		6	0.2	0	0.1	0.0
27 S	15 E	WM	14	SWNE		6	9.2	0	0.1	0.0
27 S	15 E	WM	14	SWNE		6	33.7	4	0.1	0.0
27 S	15 E	WM	14	SENE		6	34.2	4	0.1	0.0
Total Acres this Certificate							78	53.1	0.98	0.68
							Total cfs		1.68	

PRIMARY

SUPPLEMENTAL

Certificate	94357	Priority	1/5/1950					
Township	Range	Mer	Sec	Q-Q	GLot	Well #	Acres	cfs
27 S	15 E	WM	14	SWNE	2	2	8.35	0.10
27 S	15 E	WM	14	SESE	2	3	32.4	0.41
27 S	15 E	WM	14	SWSE	3	3	40.3	0.27
27 S	15 E	WM	14	SWSE	3	4	2.4	0.04
27 S	15 E	WM	14	SESE	3	5	31.2	0.38
Total Acres this Certificate							83.9	1.09

Certificate	94362	Priority	4/10/1956							
Township	Range	Mer	Sec	Q-Q	GLot	Well #	Primary Acres	Supplemental Acres	Primary cfs	Supplemental cfs
27 S	15 E	WM	14	NW NW	4	1	16.8	8.9	0.21	0.11
Total Acres this Certificate							16.8	8.9	0.21	0.11
							Total cfs		0.32	

PRIMARY

SUPPLEMENTAL

Certificate	94359	Priority	2/14/1974					
Township	Range	Mer	Sec	Q-Q	GLot	Well #	Acres	cfs
27 S	15 E	WM	14	SW NW		1	14.7	0.18
27 S	15 E	WM	14	NW SW		1	38.64	0.48
27 S	15 E	WM	14	SW SW		1	33.71	0.42
Total Acres this Certificate							87.1	1.08

Certificate	94361	Priority	1/17/1955					
Township	Range	Mer	Sec	Q-Q	GLot	Well #	Acres	cfs
27 S	15 E	WM	14	SW SW		2	3.46	0.04
27 S	15 E	WM	14	SW SW		2	9.05	0.11
27 S	15 E	WM	14	SE SW		1	3.81	0.05
27 S	15 E	WM	14	SW SE		2	13.68	0.17
Total Acres this Certificate							30	0.37

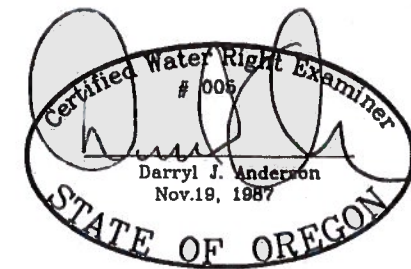
WELL 1

WELL 2

Certificate	94365	Priority	2/6/1959					
Township	Range	Mer	Sec	Q-Q	GLot	Well #	Acres	cfs
27 S	15 E	WM	14	NW NW		1	8	0.11
27 S	15 E	WM	14	NW NW		4	1.53	0.02
27 S	15 E	WM	14	SW NW		1	13.52	0.15
27 S	15 E	WM	14	SE NW		1	7.3	0.1
27 S	15 E	WM	14	SE SW		1	6.61	0.08
Total Acres this Certificate							39.5	0.25

PRIMARY

PRIMARY



Received by OWRD

JUN 02 2020

Salem, OR

NOTE:
PREPARATION OF THIS MAP IS FOR IDENTIFYING WATER RIGHTS ONLY. IT HAS NO INTENT TO PROVIDE LOCATIONS OR DIMENSIONS OF PROPERTY BOUNDARIES.

REVISION	BY
5/28/2020	RC

ANDERSON ENGINEERING AND SURVEYING, INC.
P.O. BOX 28
LAKEVIEW, OREGON 97630
(541) 947-4407
FAX: 947-2321

FOR: DANIEL & LEANNE MIDES
81341 BUICK LANE
SILVER LAKE, OR 97638

MAP TO ACCOMPANY
TRANSFER APPLICATION
ORIGINAL CERTIFICATE LAYOUTS

DATE:	04/15/20
SCALE:	1"=1320'
DWG. BY:	R.C.
JOB:	2019-083
FILE:	2019-083
SHEET:	1 OF 4

94357																													
Township	Range	Sec	Q-Q	Taxlot	GLot	Acres	Use	POA Well	Priority	Proposed Change	Township	Range	Sec	Q-Q	Taxlot	GLot	Acres	Use	POA Well	Priority									
27	S	15	E	2	NW SE	300		2.42	Irrigation	3	1/5/1950	POD/POU	27	S	16	E	18	SW NE	513		2.42	Irrigation	7	1/5/1950					
						2.42																	2.42						

94359																													
Township	Range	Sec	Q-Q	Taxlot	GLot	Acres	Use	POA Well	Priority	Proposed Change	Township	Range	Sec	Q-Q	Taxlot	GLot	Acres	Use	POA Well	Priority									
27	S	15	E	2	SW SW	300		24.05	Irrigation	1	2/14/1974	POD/POU	27	S	16	E	18	NE NE	200, 513		1.2	Irrigation	7	2/14/1974					
												27	S	16	E	18	NW NE	300, 400, 513			22.85	Irrigation	7	2/14/1974					
						24.05																	24.05						

94361																													
Township	Range	Sec	Q-Q	Taxlot	GLot	Acres	Use	POA Well	Priority	Proposed Change	Township	Range	Sec	Q-Q	Taxlot	GLot	Acres	Use	POA Well	Priority									
27	S	15	E	2	SW SW	300		3.46	Irrigation	2	1/17/1955	POD/POU	27	S	16	E	18	SW NE	513		8.46	Irrigation	7	1/17/1955					
27	S	15	E	2	SE SW	300		1.19	Irrigation	2	1/17/1955	POD/POU																	
27	S	15	E	2	SE SW	300		3.81	Irrigation	1	1/17/1955	POD/POU																	
						8.46																	8.46						

94362																													
Township	Range	Sec	Q-Q	Taxlot	GLot	Primary Acres	Use	POA Well	Priority	Proposed Change	Township	Range	Sec	Q-Q	Taxlot	GLot	Primary Acres	Use	POA Well	Priority									
27	S	15	E	2	NW NW	400	4	16.8	Primary Irrigation		4/10/1956	POD/POU	27	S	16	E	18	NW NE	513		2.06	Primary Irrigation	7	4/10/1956					
													27	S	16	E	18	SE NE	513		14.74	Primary Irrigation	7	4/10/1956					
						16.8																	16.8						

94362																													
Township	Range	Sec	Q-Q	Taxlot	GLot	Supplemental Acres	Use	POA Well	Priority	Proposed Change	Township	Range	Sec	Q-Q	Taxlot	GLot	Supplemental Acres	Use	POA Well	Priority									
27	S	15	E	2	NW NW	400	4	1.42	Supplemental Irrigation		4/10/1956	POU	27	S	15	E	2	NW NW	400	4	1.42	Supplemental Irrigation	1	4/10/1956					
						1.42																	1.42						

94365																													
Township	Range	Sec	Q-Q	Taxlot	GLot	Acres	Use	POA Well	Priority	Proposed Change	Township	Range	Sec	Q-Q	Taxlot	GLot	Acres	Use	POA Well	Priority									
27	S	15	E	2	NE NW	400	3	7.17	Irrigation	1	2/6/1959	POD/POU	27	S	16	E	18	SW NE	513		3.13	Irrigation	7	2/6/1959					
27	S	15	E	2	NW NW	400	4	1.42	Irrigation	1	2/6/1959	POD/POU	27	S	16	E	18	SE NE	513		8.13	Irrigation	7	2/6/1959					
27	S	15	E	2	SE NW	400		1.53	Irrigation	1	2/6/1959	POD/POU																	
27	S	15	E	2	NE SW	300		1.14	Irrigation	1	2/6/1959	POD/POU																	
						11.26																	11.26						

35750																													
Township	Range	Sec	Q-Q	Taxlot	GLot	Acres	Use	POA Well	Priority	Proposed Change	Township	Range	Sec	Q-Q	Taxlot	GLot	Acres	Use	POA Well	Priority									
27	S	15	E	14	NE NE	3400		5.29	Irrigation	5	11/6/1958	POD/POU	27	S	16	E	18	SW NE	513		10.31	Irrigation	7	11/6/1958					
27	S	15	E	14	NW NE	3400		5.02	Irrigation	5	11/6/1958	POD/POU																	
						10.31																	10.31						

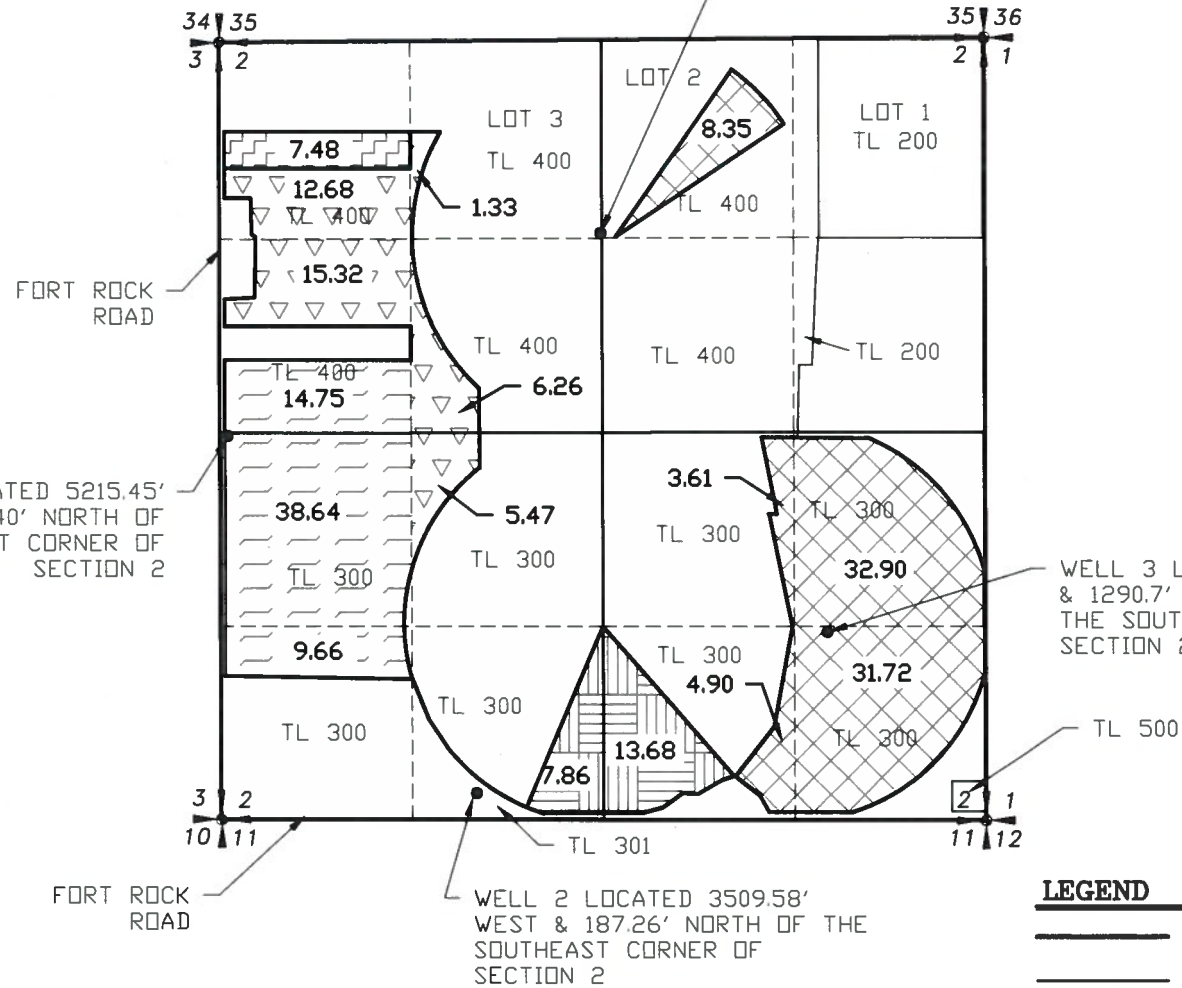
48606																													
Township	Range	Sec	Q-Q	Taxlot	GLot	Primary Acres	Use	POA Well	Priority	Proposed Change	Township	Range	Sec	Q-Q	Taxlot	GLot	Acres	Primary Acres	POA Well	Priority									
27	S	15	E	14	NW NE	3400		5.41	Primary Irrigation	6	8/9/1976	POD/POU	27	S	16	E	18	NE NE	100, 200, 513		17.74	Primary Irrigation	7	8/9/1976					
27	S	15	E	14	SW NE	3400		5.72	Primary Irrigation	6	8/9/1976	POD/POU																	
27	S	15	E	14	SE NE	3400		6.61	Primary Irrigation	6	8/9/1976	POD/POU																	
						17.74																	17.74						

48606																													
Township	Range	Sec	Q-Q	Taxlot	GLot	Supplemental Acres	Use	POA Well	Priority	Proposed Change	Township	Range	Sec	Q-Q	Taxlot	GLot	Supplemental Acres	Use	POA Well	Priority									
27	S	15	E	14	NE NE	3400		5.29	Supplemental Irrigation	6	8/9/1976	POU	27	S	15	E	14	SE NE	3400		10.31	Supplemental Irrigation	6	8/9/1976					
27	S	15	E	14	NW NE	3400		5.02	Supplemental Irrigation	6	8/9/1976	POU																	
						10.31																	10.31						

RECEIVED
MAY 26 2020
OWRD

SECTION 2, TOWNSHIP 27 SOUTH,
RANGE 15 EAST, W.M.

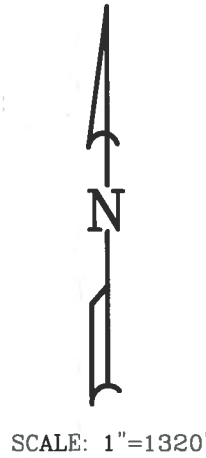
WELL 4 LOCATED 2643.37'
WEST & 4012.32' NORTH OF
THE SOUTHEAST CORNER OF
SECTION 2



WELL 1 LOCATED 5215.45'
WEST & 2627.40' NORTH OF
THE SOUTHEAST CORNER OF
SECTION 2

WELL 2 LOCATED 3509.58'
WEST & 187.26' NORTH OF THE
SOUTHEAST CORNER OF
SECTION 2

WELL 3 LOCATED 1089.8' WE
& 1290.7' NORTH OF
THE SOUTHEAST CORNER OF
SECTION 2



LEGEND

- SECTION LINE
- 1/4 SECTION LINE
- - - 1/16 SECTION LINE

Certificate	94357	Priority	1/5/1950					
Township	Range	Mer	Sec	Q-Q	GLot	Well #	Acres	cfs
27 S	15 E	WM	2	NWNE	2	4	8.35	0.104
27 S	15 E	WM	2	NESE	3	3	12.9	0.411
27 S	15 E	WM	2	NWSE	3	3	3.01	0.043
27 S	15 E	WM	2	SWSE	3	3	4.9	0.061
27 S	15 E	WM	2	SESE	3	3	31.72	0.397
Total Acres this Certificate							81.48	1.019

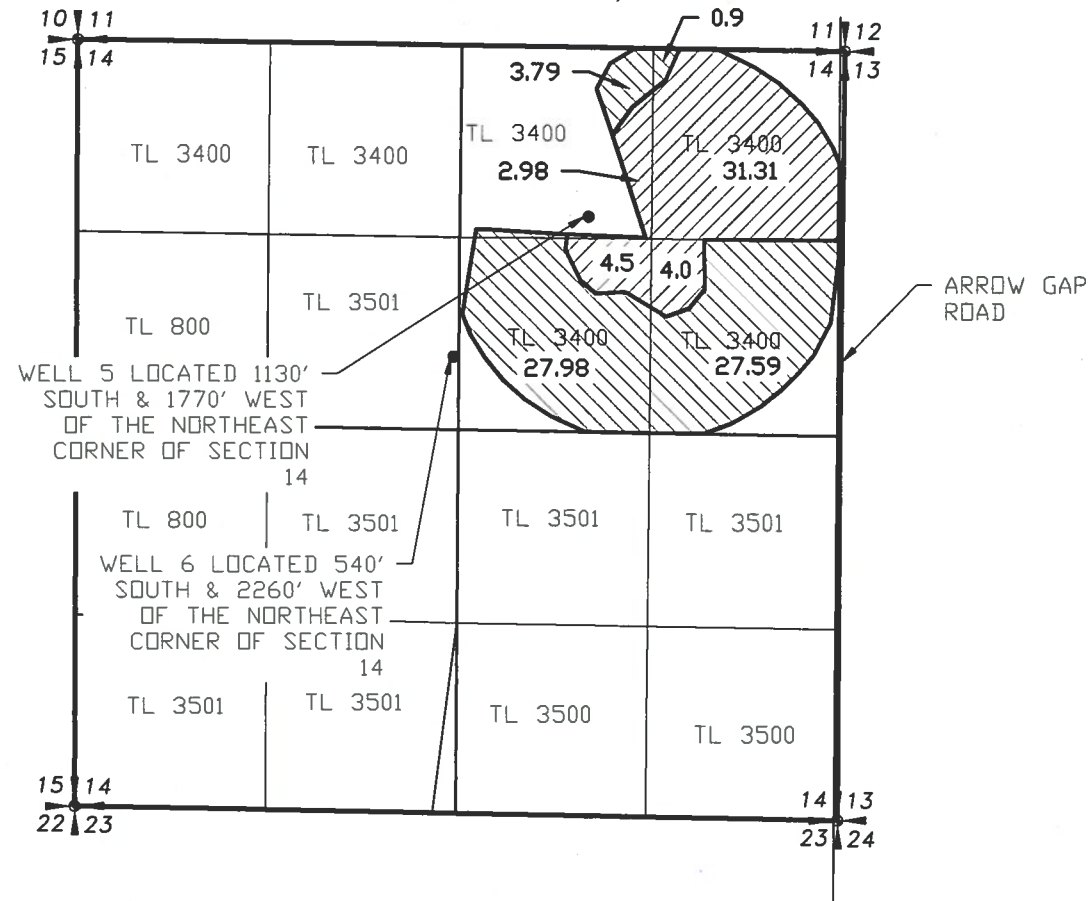
Certificate	94359	Priority	2/14/1974					
Township	Range	Mer	Sec	Q-Q	GLot	Well #	Acres	cfs
27 S	15 E	WM	2	SWNW	1	1	14.75	0.18
27 S	15 E	WM	2	NW SW	1	1	38.64	0.48
27 S	15 E	WM	2	SW SW	1	1	9.66	0.12
Total Acres this Certificate							63.05	0.79

Certificate	94361	Priority	1/17/1955					
Township	Range	Mer	Sec	Q-Q	GLot	Well #	Acres	cfs
27 S	15 E	WM	2	SE SW	2	2	7.86	0.10
27 S	15 E	WM	2	SW SE	2	2	13.68	0.17
Total Acres this Certificate							21.54	0.27

Certificate	94362	Priority	4/10/1956							
Township	Range	Mer	Sec	Q-Q	GLot	Well #	Primary Acres	Supplemental Acres	Primary cfs	Supplemental cfs
27 S	15 E	WM	2	NW NW	4	1	0	7.48	0.00	0.09
Total Acres this Certificate							0	7.48	0.00	0.09
							Total cfs		0.09	

Certificate	94365	Priority	2/6/1959					
Township	Range	Mer	Sec	Q-Q	GLot	Well #	Acres	cfs
27 S	15 E	WM	2	NE NW	3	1	1.33	0.02
27 S	15 E	WM	2	NW NW	4	1	20.16	0.25
27 S	15 E	WM	2	SW NW	1	1	15.32	0.19
27 S	15 E	WM	2	SE NW	1	1	6.26	0.08
27 S	15 E	WM	2	NE SW	1	1	3.47	0.07
Total Acres this Certificate							48.54	0.61

SECTION 14, TOWNSHIP 27 SOUTH,
RANGE 15 EAST, W.M.

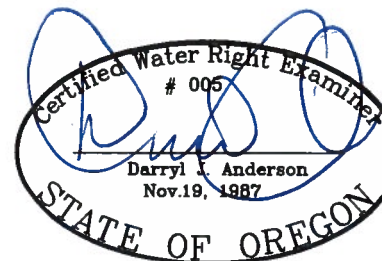
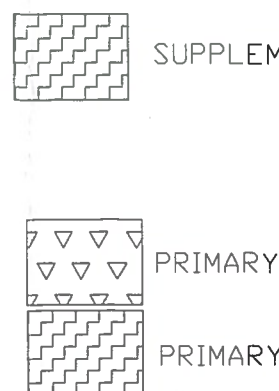


WELL 5 LOCATED 1130'
SOUTH & 1770' WEST
OF THE NORTHEAST
CORNER OF SECTION
14

WELL 6 LOCATED 540'
SOUTH & 2260' WEST
OF THE NORTHEAST
CORNER OF SECTION
14

Certificate	48606	Priority	8/9/1976							
Township	Range	Mer	Sec	Q-Q	GLot	Well #	Primary Acres	Supplemental Acres	Primary cfs	Supplemental cfs
27 S	15 E	WM	14	NE NE	6	6	0.9	31.31	0.01	0.39
27 S	15 E	WM	14	NW NE	6	6	3.79	2.98	0.05	0.04
27 S	15 E	WM	14	SW NE	6	6	27.98	4.5	0.35	0.06
27 S	15 E	WM	14	SE NE	6	6	27.59	4	0.34	0.05
Total Acres this Certificate							60.26	42.79	0.75	0.53
							Total cfs		1.29	

Certificate	35750	Priority	11/6/1958					
Township	Range	Mer	Sec	Q-Q	GLot	Well #	Acres	cfs
27 S	15 E	WM	14	NE NE	5	5	31.31	0.39
27 S	15 E	WM	14	NW NE	5	5	2.98	0.04
27 S	15 E	WM	14	SW NE	5	5	4.5	0.06
27 S	15 E	WM	14	SE NE	5	5	4	0.05
Total Acres this Certificate							42.79	0.53



RENEWAL 12/31/21

NOTE:
PREPARATION OF THIS MAP IS FOR
IDENTIFYING WATER RIGHTS ONLY. IT
HAS NO INTENT TO PROVIDE
LOCATIONS OR DIMENSIONS OF
PROPERTY BOUNDARIES.

REVISION	BY

**ANDERSON ENGINEERING
AND SURVEYING, INC.**
P.O. BOX 28
LAKEVIEW, OREGON 97630
(541) 947-4407
FAX: 947-2321

FOR:
DANIEL & LEANNE MILES
81341 BUICK LANE
SILVER LAKE, OR
97638

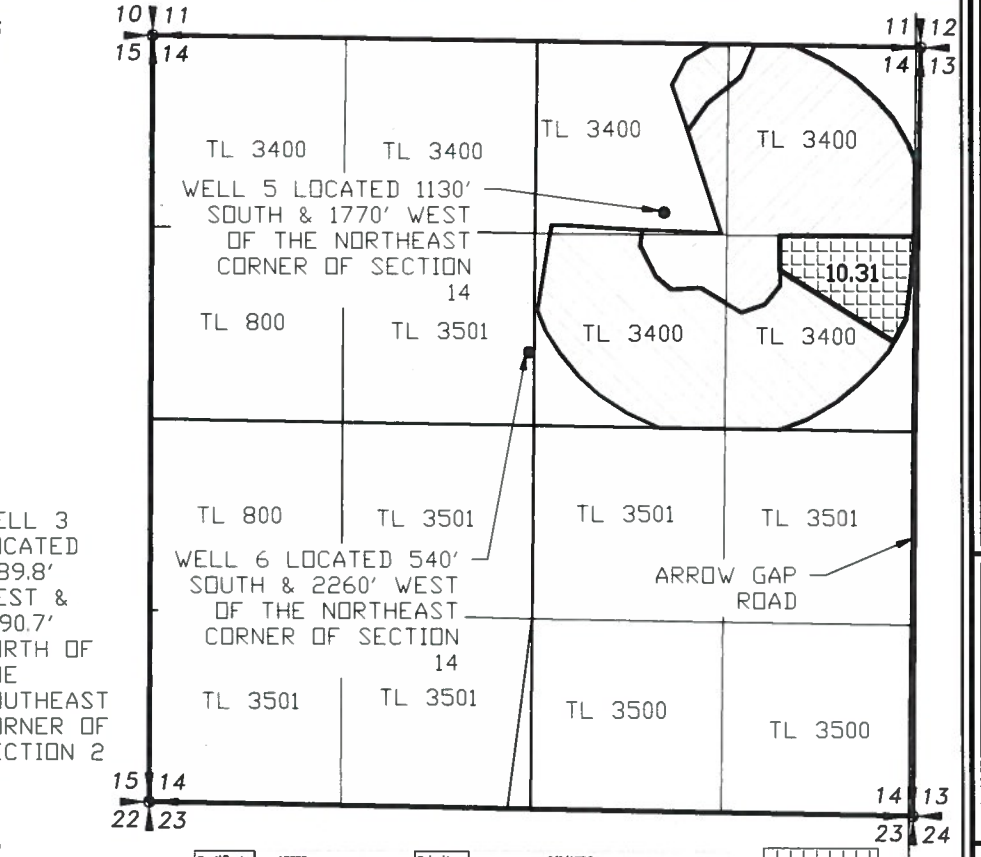
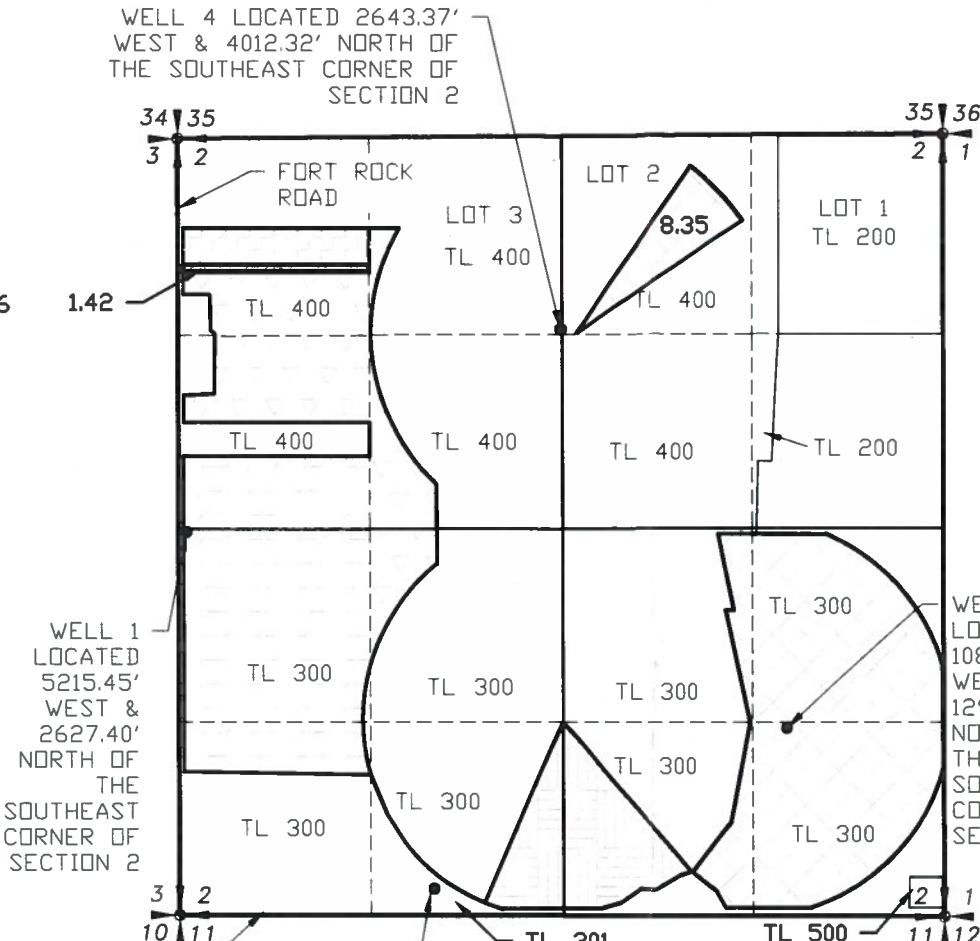
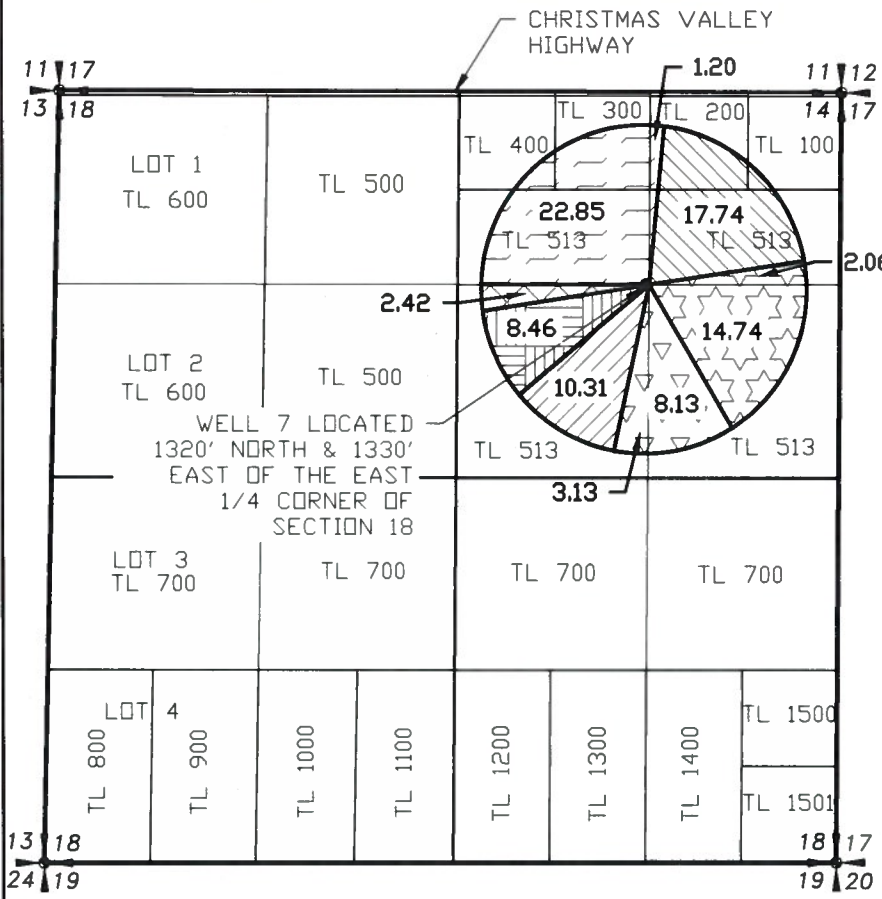
MAP TO ACCOMPANY
TRANSFER APPLICATION
AREAS TO REMAIN

DATE:	04/15/20
SCALE:	1"=1320'
DWG. BY:	R.C.
JOB:	2019-083
FILE:	2019-083
SHEET:	4 OF 4

SECTION 18, TOWNSHIP 27 SOUTH,
RANGE 16 EAST, W.M.

SECTION 2, TOWNSHIP 27 SOUTH,
RANGE 15 EAST, W.M.

SECTION 14, TOWNSHIP 27 SOUTH,
RANGE 15 EAST, W.M.



Certificate	94357	Priority	1/5/1950					
Township	Range	Mer	Sec	Q-Q	GLot	Well #	Acres	cf
27 S	16 E	W.M.	18	SW NE	7	7	2.42	0.03
27 S	16 E	W.M.	18	SE NE	7	7	0	0.00
Total Acres this Certificate							2.42	0.030

Certificate	94359	Priority	2/14/1974					
Township	Range	Mer	Sec	Q-Q	GLot	Well #	Acres	cf
27 S	16 E	W.M.	18	NE NE	7	7	1.2	0.02
27 S	16 E	W.M.	18	SW NE	7	7	22.85	0.29
Total Acres this Certificate							24.05	0.30

Certificate	94361	Priority	1/17/1955					
Township	Range	Mer	Sec	Q-Q	GLot	Well #	Acres	cf
27 S	16 E	W.M.	18	SW NE	7	7	8.46	0.11
Total Acres this Certificate							8.46	0.11

Certificate	94362	Priority	4/10/1956					
Township	Range	Mer	Sec	Q-Q	GLot	Well #	Primary Acres	Primary cf
27 S	16 E	W.M.	18	NE NE	7	7	2.06	0.03
27 S	16 E	W.M.	18	SE NE	7	7	14.74	0.18
Total Acres this Certificate							16.8	0.21

Certificate	94365	Priority	2/6/1959					
Township	Range	Mer	Sec	Q-Q	GLot	Well #	Acres	cf
27 S	16 E	W.M.	18	SW NE	7	7	8.13	0.10
27 S	16 E	W.M.	18	SE NE	7	7	3.13	0.04
Total Acres this Certificate							11.26	0.14

Certificate	48606	Priority	8/9/1976					
Township	Range	Mer	Sec	Q-Q	GLot	Well #	Primary Acres	Primary cf
27 S	16 E	W.M.	18	NE NE	7	7	17.74	0.22
Total Acres this Certificate							17.74	0.22

Certificate	94362	Priority	4/10/1956					
Township	Range	Mer	Sec	Q-Q	GLot	Well #	Supplemental Acres	Supplemental cf
27 S	16 E	W.M.	18	SW NW	4	1	1.42	0.02
Total Acres this Certificate							1.42	0.02

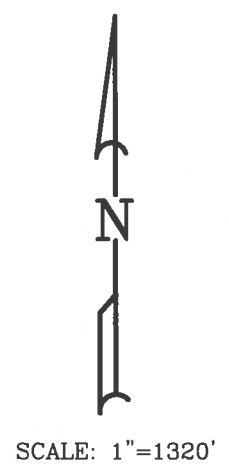
Certificate	35750	Priority	11/6/1958					
Township	Range	Mer	Sec	Q-Q	GLot	Well #	Acres	cf
27 S	16 E	W.M.	18	SW NE	7	7	10.31	0.13
Total Acres this Certificate							10.31	0.13

Certificate	48606	Priority	8/9/1976					
Township	Range	Mer	Sec	Q-Q	GLot	Well #	Supplemental Acres	Supplemental cf
27 S	16 E	W.M.	18	SE NE	6	6	10.31	0.13
Total Acres this Certificate							10.31	0.13

LEGEND
 — SECTION LINE
 - - - 1/4 SECTION LINE
 - - - - 1/16 SECTION LINE



RENEWAL 12/31/21



RECEIVED
MAY 26 2020
OWRD

NOTE:
PREPARATION OF THIS MAP IS FOR IDENTIFYING WATER RIGHTS ONLY. IT HAS NO INTENT TO PROVIDE LOCATIONS OR DIMENSIONS OF PROPERTY BOUNDARIES.

REVISION	BY

ANDERSON ENGINEERING AND SURVEYING, INC.
 P.O. BOX 28
 LAKEVIEW, OREGON 97630
 (541) 947-4407
 FAX: 947-2321

FOR:
DANIEL & LEANNE MILES
 81341 BUICK LANE
 SILVER LAKE, OR
 97638

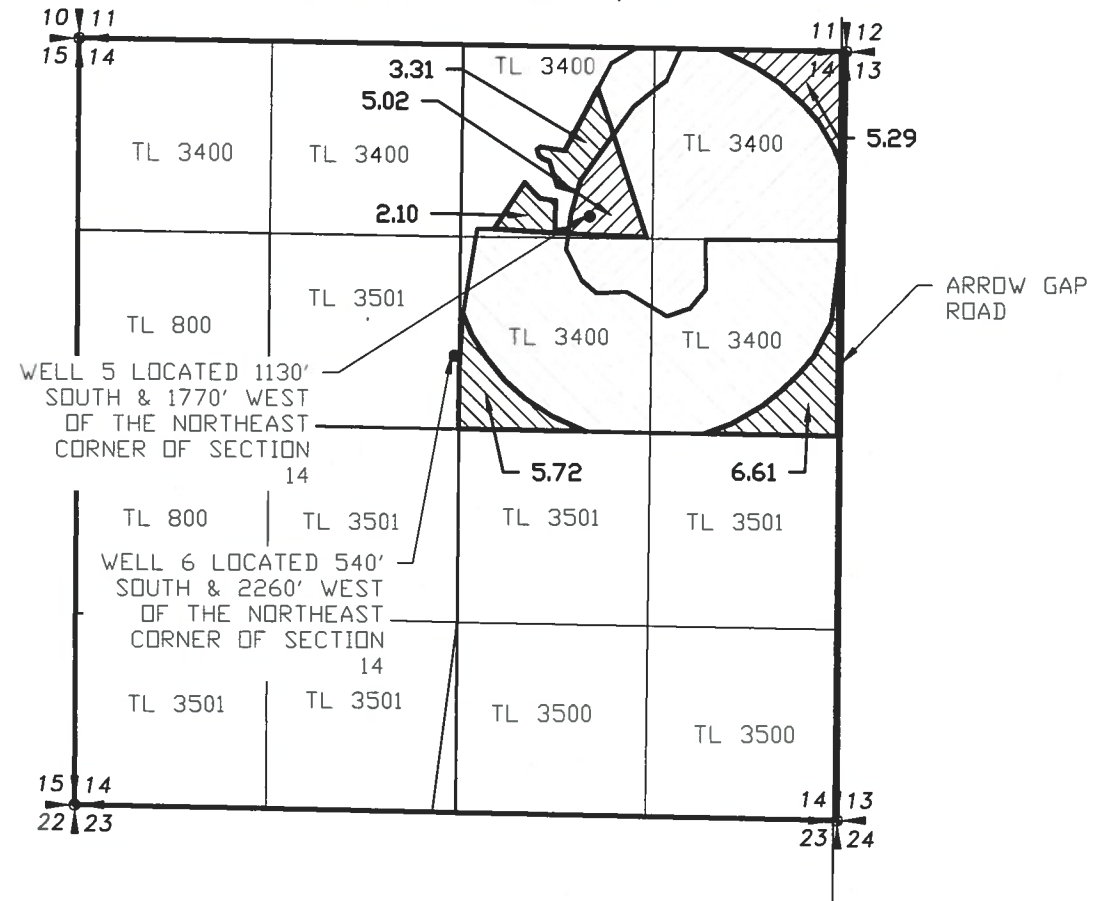
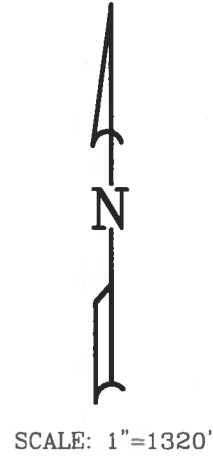
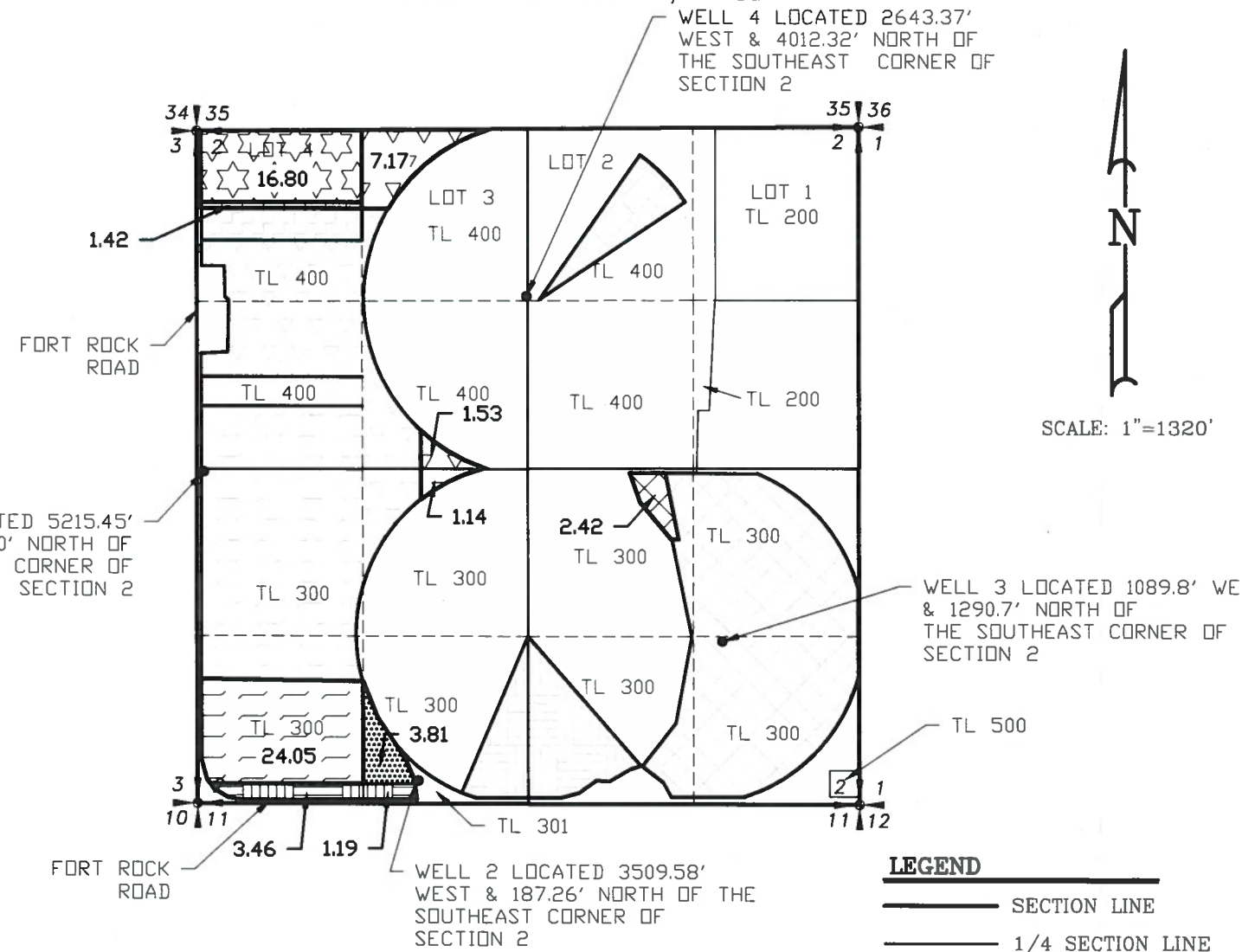
**MAP TO ACCOMPANY
 TRANSFER APPLICATION
 RESULTING LOCATIONS**

DATE:	04/15/20
SCALE:	1"=1320'
DWG. BY:	R.C.
JOB:	2019-083
FILE:	2019-083
SHEET:	3 OF 4

18457 -

SECTION 2, TOWNSHIP 27 SOUTH,
RANGE 15 EAST, W.M.

SECTION 14, TOWNSHIP 27 SOUTH,
RANGE 15 EAST, W.M.



LEGEND

— SECTION LINE

— 1/4 SECTION LINE

- - - 1/16 SECTION LINE

Certificate	48606	Priority	8/9/1976	Primary Acres	Supplemental Acres	Primary cfs	Supplemental cfs
Township	Range	Mer	Sec	Q-Q	GLot	Well#	
27 S	15 E	WM	14	NE NE		6	0
27 S	15 E	WM	14	NW NE		6	5.41
27 S	15 E	WM	14	SW NE		6	5.72
27 S	15 E	WM	14	SE NE		6	6.61
Total Acres this Certificate							17.74
							10.31
							0.25
							0.13
							0.35



Certificate	94357	Priority	1/5/1950	Primary Acres	Supplemental Acres	Primary cfs	Supplemental cfs
Township	Range	Mer	Sec	Q-Q	GLot	Well#	
27 S	15 E	WM	2	NW SE		3	2.42
Total Acres this Certificate							0.030
							2.42
							0.030

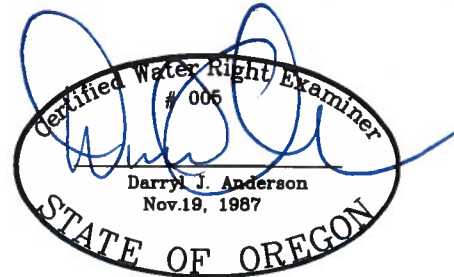
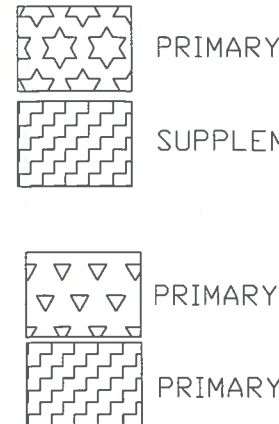
Certificate	94362	Priority	4/10/1956	Primary Acres	Supplemental Acres	Primary cfs	Supplemental cfs
Township	Range	Mer	Sec	Q-Q	GLot	Well#	
27 S	15 E	WM	2	NW NW		4	1.42
Total Acres this Certificate							0.21
							0.02
							0.23

Certificate	94359	Priority	2/14/1974	Primary Acres	Supplemental Acres	Primary cfs	Supplemental cfs
Township	Range	Mer	Sec	Q-Q	GLot	Well#	
27 S	15 E	WM	2	SW SW		1	24.05
Total Acres this Certificate							0.30
							3.405
							0.30

Certificate	94361	Priority	1/17/1955	Primary Acres	Supplemental Acres	Primary cfs	Supplemental cfs
Township	Range	Mer	Sec	Q-Q	GLot	Well#	
27 S	15 E	WM	2	SW SW		2	3.46
27 S	15 E	WM	2	SE SW		2	1.19
27 S	15 E	WM	2	SE SW		1	3.81
Total Acres this Certificate							0.11
							8.46
							0.11

Certificate	94365	Priority	2/6/1959	Primary Acres	Supplemental Acres	Primary cfs	Supplemental cfs
Township	Range	Mer	Sec	Q-Q	GLot	Well#	
27 S	15 E	WM	2	NENW		3	7.17
27 S	15 E	WM	2	NW NW		4	1.42
27 S	15 E	WM	2	SE NW		1	1.53
27 S	15 E	WM	2	NE SW		1	1.14
Total Acres this Certificate							0.14
							11.26
							0.14

Certificate	35750	Priority	11/6/1958	Primary Acres	Supplemental Acres	Primary cfs	Supplemental cfs
Township	Range	Mer	Sec	Q-Q	GLot	Well#	
27 S	15 E	WM	14	NENE		5	5.29
27 S	15 E	WM	14	NW NE		5	5.02
Total Acres this Certificate							0.07
							10.31
							0.13



RECEIVED
MAY 26 2020
OWRD

NOTE:
PREPARATION OF THIS MAP IS FOR IDENTIFYING WATER RIGHTS ONLY. IT HAS NO INTENT TO PROVIDE LOCATIONS OR DIMENSIONS OF PROPERTY BOUNDARIES.

REVISION	BY

ANDERSON ENGINEERING AND SURVEYING, INC.
P.O. BOX 28
LAKEVIEW, OREGON 97630
(541) 947-4407
FAX: 947-2321

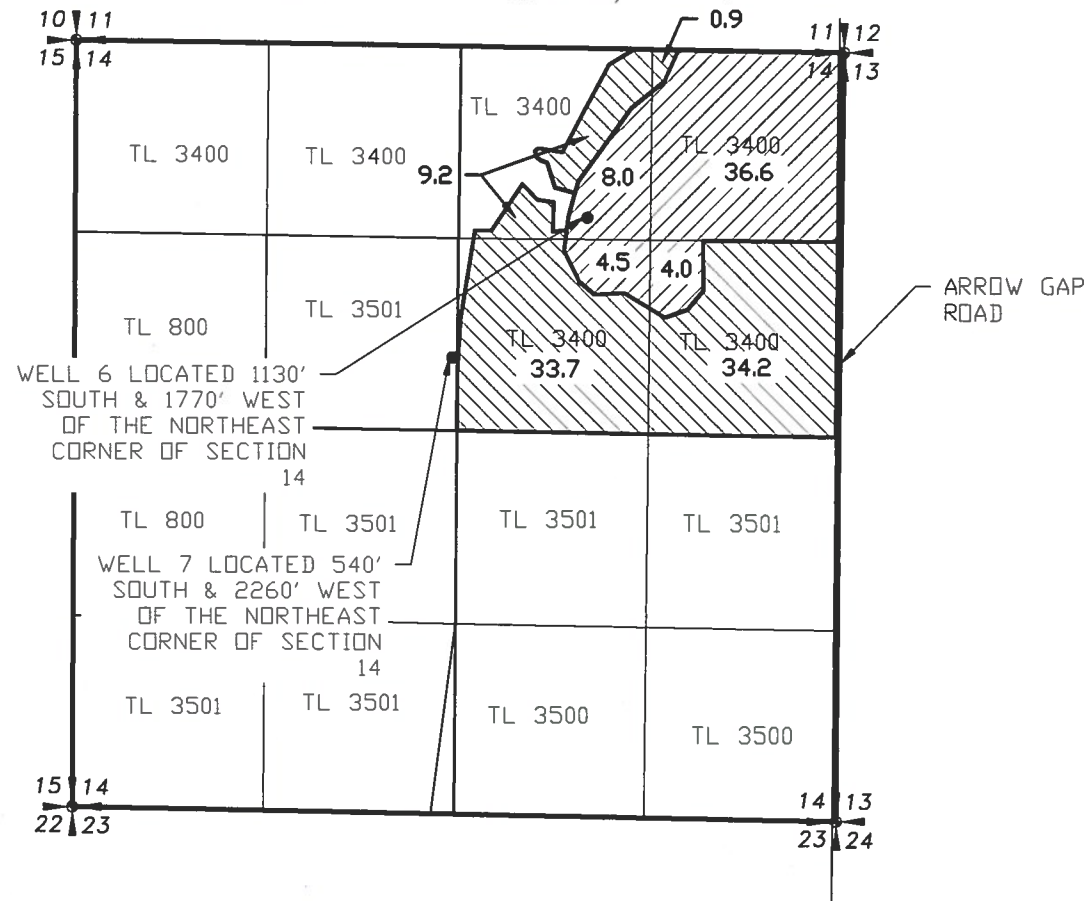
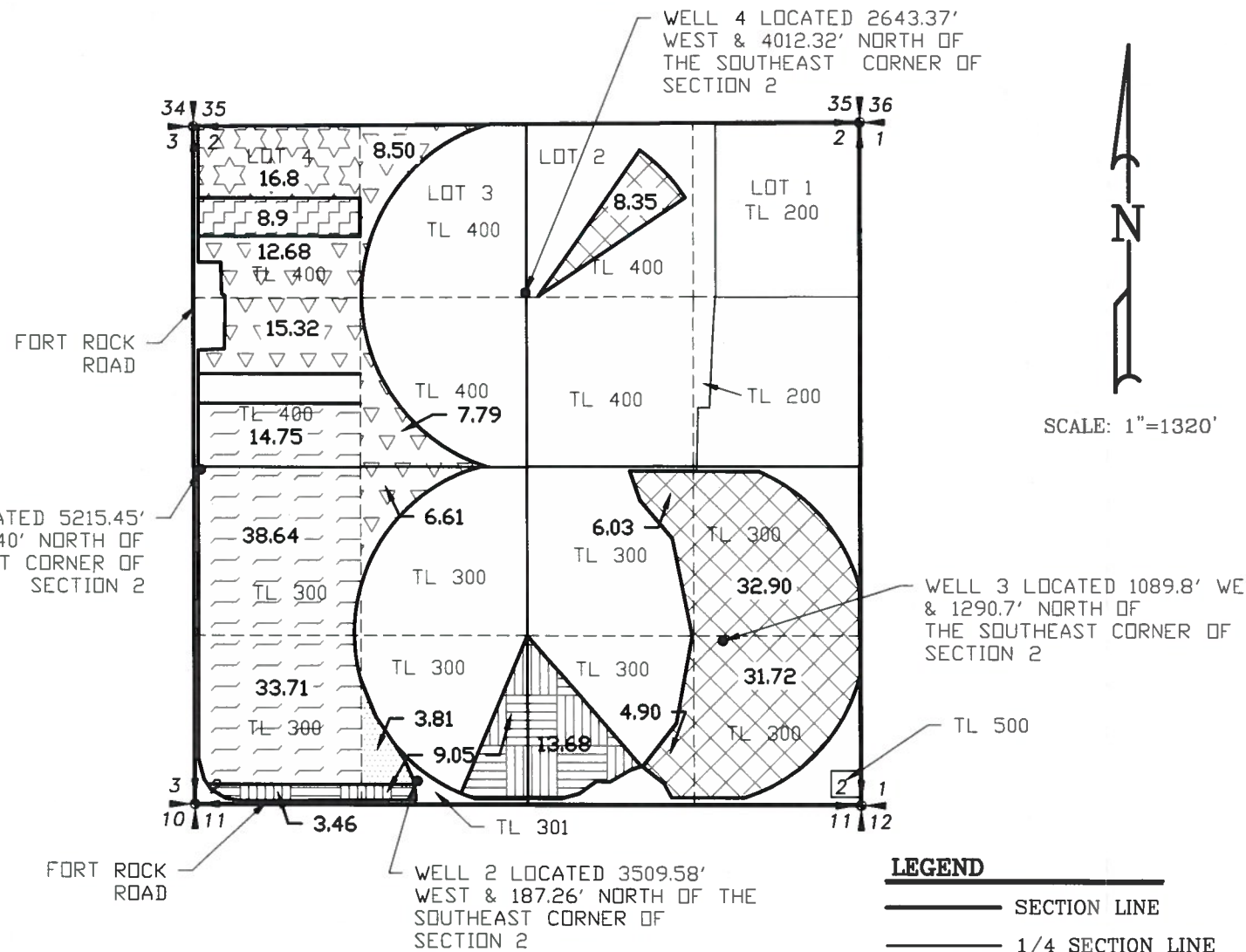
FOR: DANIEL & LEANNE MILES
81341 BUICK LANE
SILVER LAKE, OR 97638

MAP TO ACCOMPANY
TRANSFER APPLICATION
AREAS TO TRANSFER

DATE:	04/15/20
SCALE:	1"=1320'
DWG. BY:	R.C.
JOB:	2019-083
FILE:	2019-083
SHEET:	2 OF 4

SECTION 2, TOWNSHIP 27 SOUTH,
RANGE 15 EAST, W.M.

SECTION 14, TOWNSHIP 27 SOUTH,
RANGE 15 EAST, W.M.



LEGEND

— SECTION LINE

— 1/4 SECTION LINE

--- 1/16 SECTION LINE

Certificate	48606	Priority	8/9/1976	Primary Acres	Supplemental Acres	Primary cfs	Supplemental cfs
Township	Range	Mer	Sec	Q-Q	GLot	Well #	
27 S	15 E	WM	14	NENE	6	0.9	36.6
27 S	15 E	WM	14	NW NE	6	9.2	8
27 S	15 E	WM	14	SW NE	6	33.7	4.5
27 S	15 E	WM	14	SE NE	6	34.2	4
Total Acres this Certificate				78	53.1	0.98	0.66



Certificate	94357	Priority	1/5/1950	Primary Acres	Supplemental Acres	Primary cfs	Supplemental cfs
Township	Range	Mer	Sec	Q-Q	GLot	Well #	
27 S	15 E	WM	2	NW NE	2	4	83.5
27 S	15 E	WM	2	NE SE	3	3	32.9
27 S	15 E	WM	2	NW SE	3	6.03	0.075
27 S	15 E	WM	2	SW SE	3	4.9	0.061
27 S	15 E	WM	2	SE SE	3	31.72	0.397
Total Acres this Certificate				83.9	1.049		

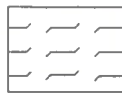
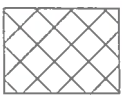
Certificate	94362	Priority	4/10/1956	Primary Acres	Supplemental Acres	Primary cfs	Supplemental cfs
Township	Range	Mer	Sec	Q-Q	GLot	Well #	
27 S	15 E	WM	2	NW NW	4	1	16.8
Total Acres this Certificate				16.8	8.9	0.21	0.11



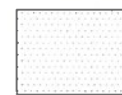
Certificate	35750	Priority	11/6/1958	Primary Acres	Supplemental Acres	Primary cfs	Supplemental cfs
Township	Range	Mer	Sec	Q-Q	GLot	Well #	
27 S	15 E	WM	14	NENE	5	5	36.6
27 S	15 E	WM	14	NW NE	5	5	8
27 S	15 E	WM	14	SW NE	5	5	4.5
27 S	15 E	WM	14	SE NE	5	5	4
Total Acres this Certificate				53.1	0.66		



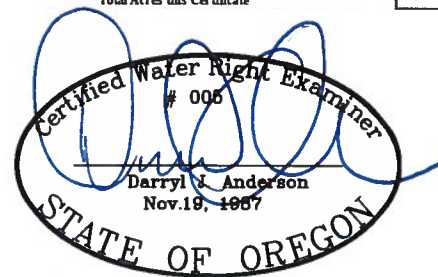
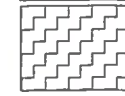
Certificate	94359	Priority	2/14/1974	Primary Acres	Supplemental Acres	Primary cfs	Supplemental cfs
Township	Range	Mer	Sec	Q-Q	GLot	Well #	
27 S	15 E	WM	2	SW NW	1	1	14.75
27 S	15 E	WM	2	NW SW	1	1	38.64
27 S	15 E	WM	2	SW SW	1	1	33.71
Total Acres this Certificate				87.1	1.09		



Certificate	94361	Priority	1/17/1955	Primary Acres	Supplemental Acres	Primary cfs	Supplemental cfs
Township	Range	Mer	Sec	Q-Q	GLot	Well #	
27 S	15 E	WM	2	SW SW	2	2	3.46
27 S	15 E	WM	2	SE SW	2	2	9.05
27 S	15 E	WM	2	SE SW	1	1	3.81
27 S	15 E	WM	2	SE SW	2	2	13.68
Total Acres this Certificate				30	0.38		



Certificate	94365	Priority	2/6/1959	Primary Acres	Supplemental Acres	Primary cfs	Supplemental cfs
Township	Range	Mer	Sec	Q-Q	GLot	Well #	
27 S	15 E	WM	2	NENW	3	1	8.5
27 S	15 E	WM	2	NW NW	4	1	21.58
27 S	15 E	WM	2	SW NW	1	1	15.32
27 S	15 E	WM	2	SE NW	1	1	7.79
27 S	15 E	WM	2	SE SW	1	1	6.61
Total Acres this Certificate				59.8	0.75		



RECEIVED
MAY 26 2020
OWRD

NOTE: PREPARATION OF THIS MAP IS FOR IDENTIFYING WATER RIGHTS ONLY. IT HAS NO INTENT TO PROVIDE LOCATIONS OR DIMENSIONS OF PROPERTY BOUNDARIES.

REVISION	BY

ANDERSON ENGINEERING AND SURVEYING, INC.
P.O. BOX 28
LAKEVIEW, OREGON 97630
(541) 947-4407
FAX: 947-2321

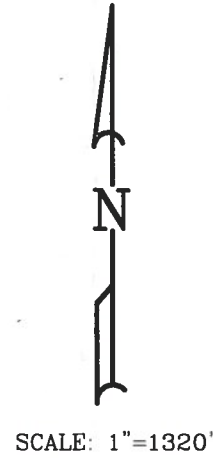
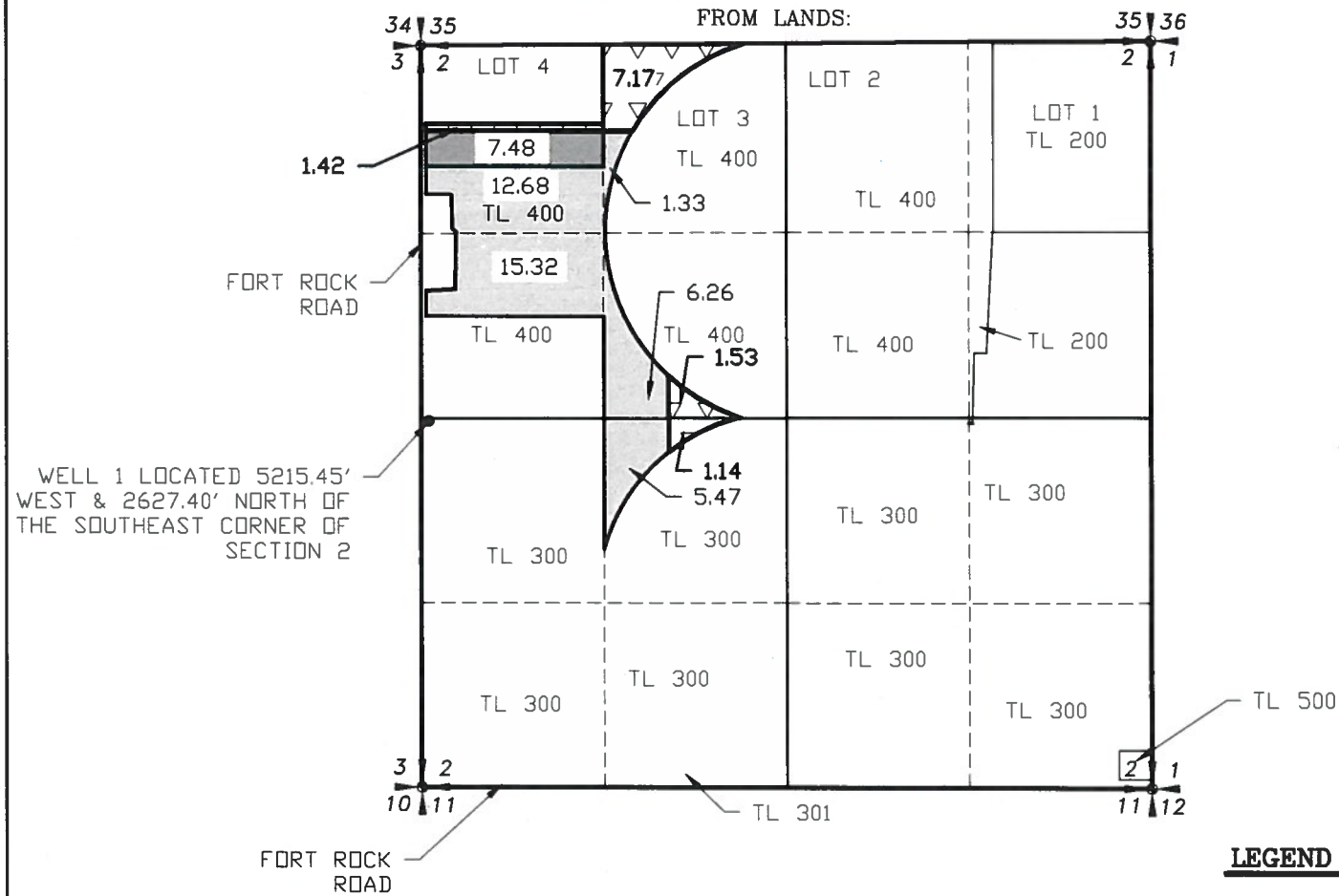
FOR: DANIEL & LEANNE MILES
81341 BUICK LANE
SILVER LAKE, OR 97638

MAP TO ACCOMPANY
TRANSFER APPLICATION
ORIGINAL CERTIFICATE LAYOUTS

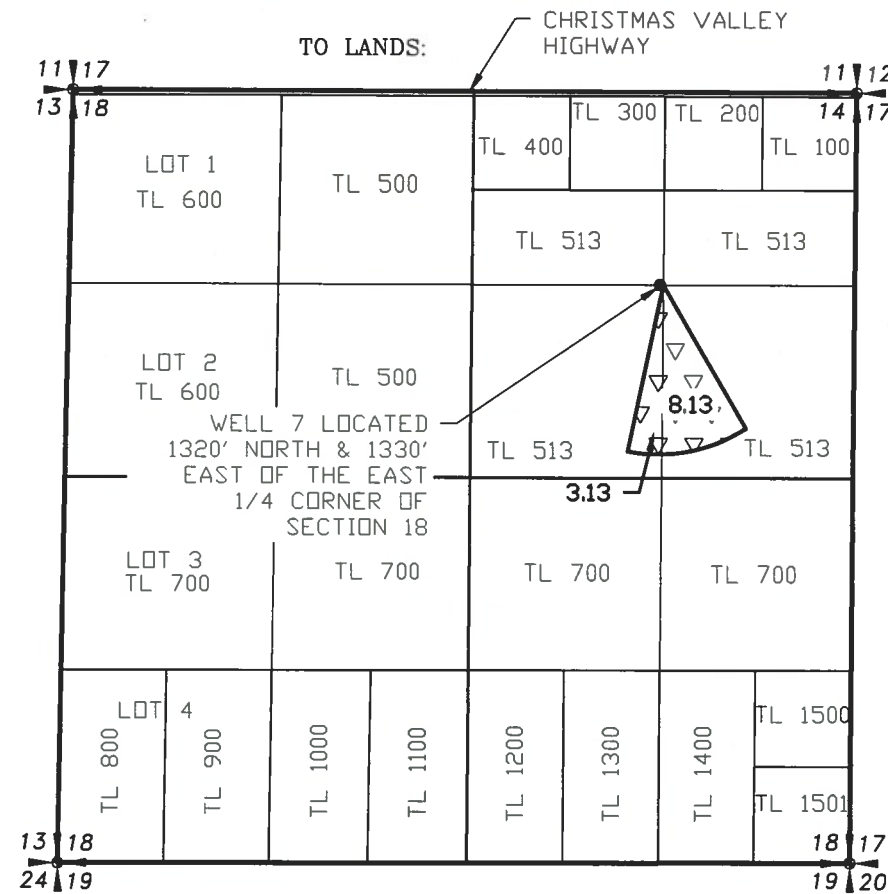
DATE:	04/15/20
SCALE:	1"=1320'
DWG. BY:	R.C.
JOB:	2019-083
FILE:	2019-083
SHEET:	1 OF 4

CERTIFICATE 94365

SECTION 2, TOWNSHIP 27 SOUTH,
RANGE 15 EAST, W.M.



SECTION 18, TOWNSHIP 27 SOUTH,
RANGE 16 EAST, W.M.



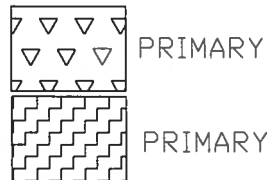
- LEGEND**
- SECTION LINE
 - 1/4 SECTION LINE
 - - - 1/16 SECTION LINE

NEW LOCATION:

Certificate	94365			Priority	2/6/1959			
Township	Range	Mer	Sec	Q-Q	GLot	Well#	Acres	cfs
27 S	15 E	W.M.	2	NE NW	3	1	7.17	0.09
27 S	15 E	W.M.	2	NW NW	4	1	1.42	0.02
27 S	15 E	W.M.	2	SE NW		1	1.53	0.02
27 S	15 E	W.M.	2	NE SW		1	1.14	0.01
Total Acres this Certificate							11.26	0.14

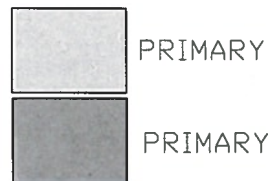
TO TRANSFER:

Certificate	94365			Priority	2/6/1959			
Township	Range	Mer	Sec	Q-Q	GLot	Well#	Acres	cfs
27 S	15 E	W.M.	2	NE NW	3	1	7.17	0.09
27 S	15 E	W.M.	2	NW NW	4	1	1.42	0.02
27 S	15 E	W.M.	2	SE NW		1	1.53	0.02
27 S	15 E	W.M.	2	NE SW		1	1.14	0.01
Total Acres this Certificate							11.26	0.14



TO REMAIN:

Certificate	94365			Priority	2/6/1959			
Township	Range	Mer	Sec	Q-Q	GLot	Well#	Acres	cfs
27 S	15 E	W.M.	2	NE NW	3	1	1.33	0.02
27 S	15 E	W.M.	2	NW NW	4	1	20.16	0.25
27 S	15 E	W.M.	2	SW NW		1	15.32	0.19
27 S	15 E	W.M.	2	SE NW		1	6.26	0.08
27 S	15 E	W.M.	2	NE SW		1	5.47	0.07
Total Acres this Certificate							48.54	0.61

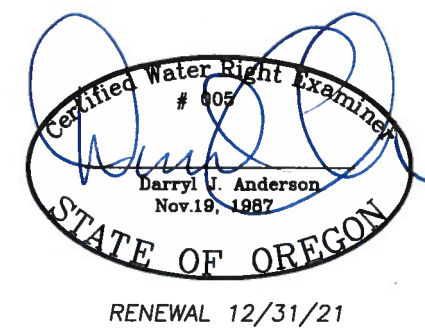


REVISION	BY

ANDERSON ENGINEERING AND SURVEYING, INC.
P.O. BOX 28
LAKEVIEW, OREGON 97630
(541) 947-4407
FAX: 947-2321

FOR: DANIEL & LEANNE MILES
81341 BUCK LANE
SILVER LAKE, OR 97638

MAP TO ACCOMPANY
TRANSFER APPLICATION
CERTIFICATE 94365



RECEIVED
MAY 26 2020
OWRD

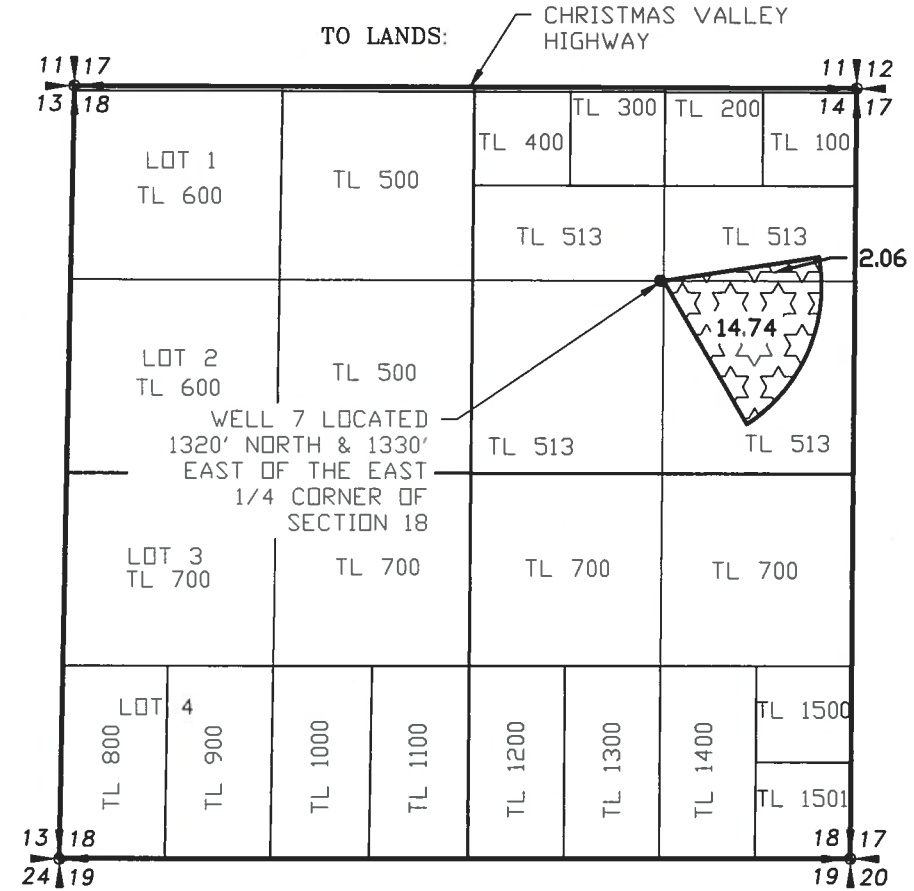
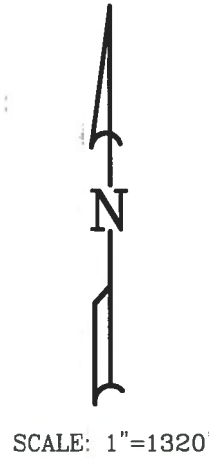
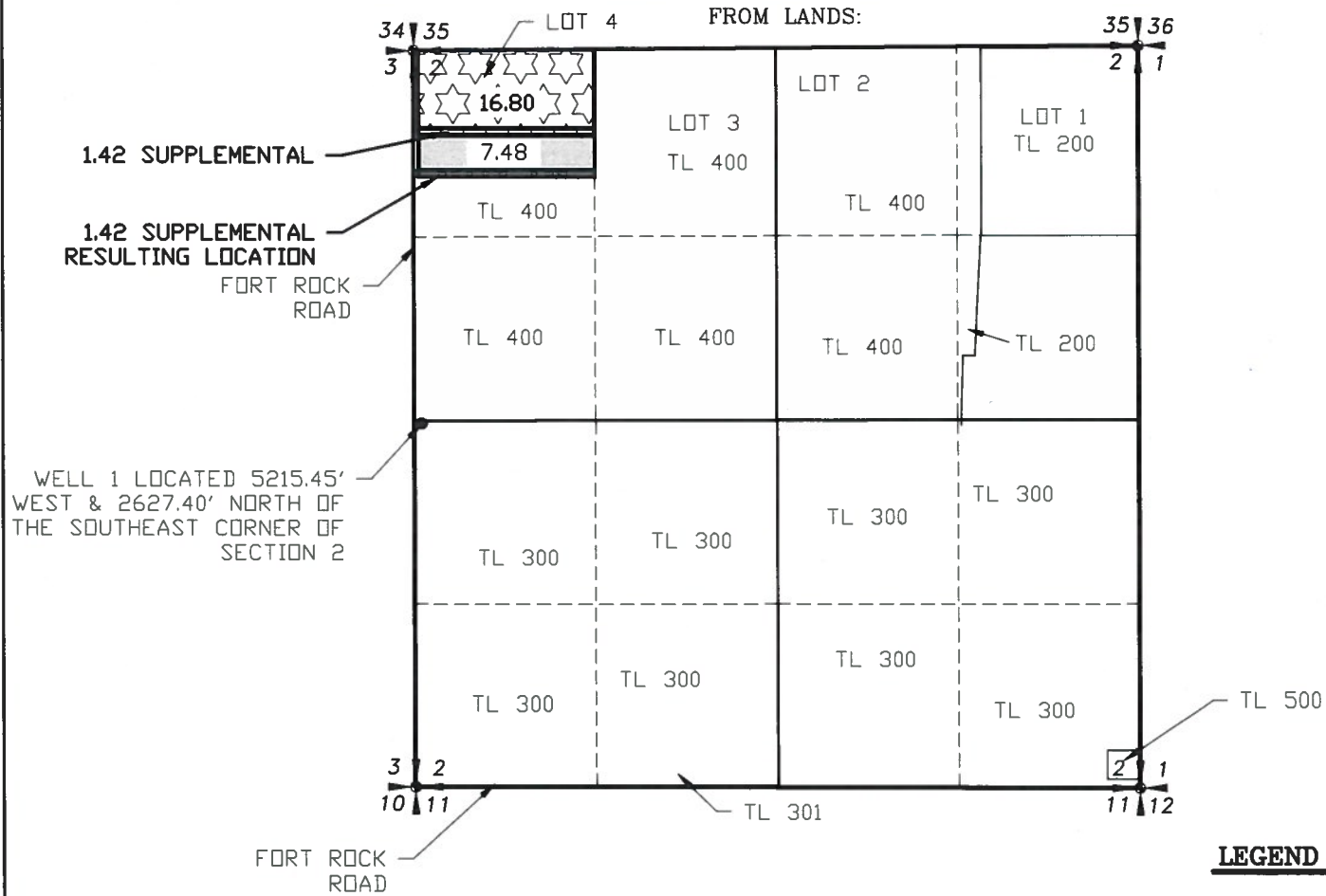
NOTE: PREPARATION OF THIS MAP IS FOR IDENTIFYING WATER RIGHTS ONLY. IT HAS NO INTENT TO PROVIDE LOCATIONS OR DIMENSIONS OF PROPERTY BOUNDARIES.

DATE:	04/15/20
SCALE:	1"=1320'
DWG. BY:	R.C.
JOB:	2019-083
FILE:	2019-083
SHEET:	1 OF 1

CERTIFICATE 94362

SECTION 2, TOWNSHIP 27 SOUTH,
RANGE 15 EAST, W.M.

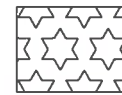
SECTION 18, TOWNSHIP 27 SOUTH,
RANGE 16 EAST, W.M.



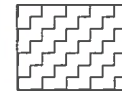
LEGEND
 — SECTION LINE
 — 1/4 SECTION LINE
 - - - 1/16 SECTION LINE

TO TRANSFER:

Certificate		94362		Priority		4/10/1956					
Township	Range	Mer	Sec	Q-Q	GLot	Well #	Primary Acres	Supplemental Acres	Primary cfs	Supplemental cfs	Total cfs
27 S	15 E	WM	2	NW-NW	4	1	16.8	1.42	0.21	0.02	
Total Acres this Certificate							16.8	1.42	0.21	0.02	
											0.23



PRIMARY



SUPPLEMENTAL

TO REMAIN:

Certificate		94362		Priority		4/10/1956					
Township	Range	Mer	Sec	Q-Q	GLot	Well #	Primary Acres	Supplemental Acres	Primary cfs	Supplemental cfs	Total cfs
27 S	15 E	WM	2	NW-NW	4	1	0	7.48	0.00	0.00	0.00
Total Acres this Certificate							0	7.48	0.00	0.00	0.00
											0.00



SUPPLEMENTAL

NEW LOCATION:

Certificate		94362		Priority		4/10/1956					
Township	Range	Mer	Sec	Q-Q	GLot	Well #	Primary Acres	Supplemental Acres	Primary cfs	Supplemental cfs	Total cfs
27 S	16 E	WM	18	NE-NE		7	2.06		0.03		
27 S	16 E	WM	18	SE-NE		7	14.74		0.18		
Total Acres this Certificate							16.8		0.21		

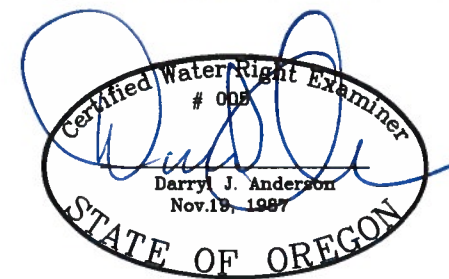


PRIMARY

Certificate		94362		Priority		4/10/1956					
Township	Range	Mer	Sec	Q-Q	GLot	Well #	Supplemental Acres	Supplemental cfs			Total cfs
27 S	15 E	WM	2	NW-NW	4	1	1.42		0.02		
Total Acres this Certificate							1.42		0.02		



SUPPLEMENTAL



RENEWAL 12/31/21

RECEIVED

MAY 26 2020

OWRD

NOTE:
PREPARATION OF THIS MAP IS FOR IDENTIFYING WATER RIGHTS ONLY. IT HAS NO INTENT TO PROVIDE LOCATIONS OR DIMENSIONS OF PROPERTY BOUNDARIES.

REVISION	BY

ANDERSON ENGINEERING AND SURVEYING, INC.
 P.O. BOX 28
 LAKEVIEW, OREGON 97630
 (541) 947-4407
 FAX: 947-2321

FOR:
DANIEL & LEANNE MILES
 81341 BUICK LANE
 SILVER LAKE, OR 97638

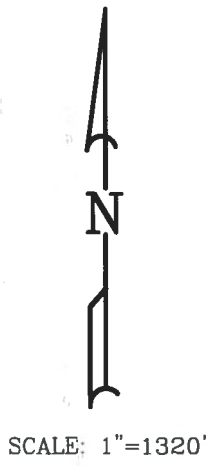
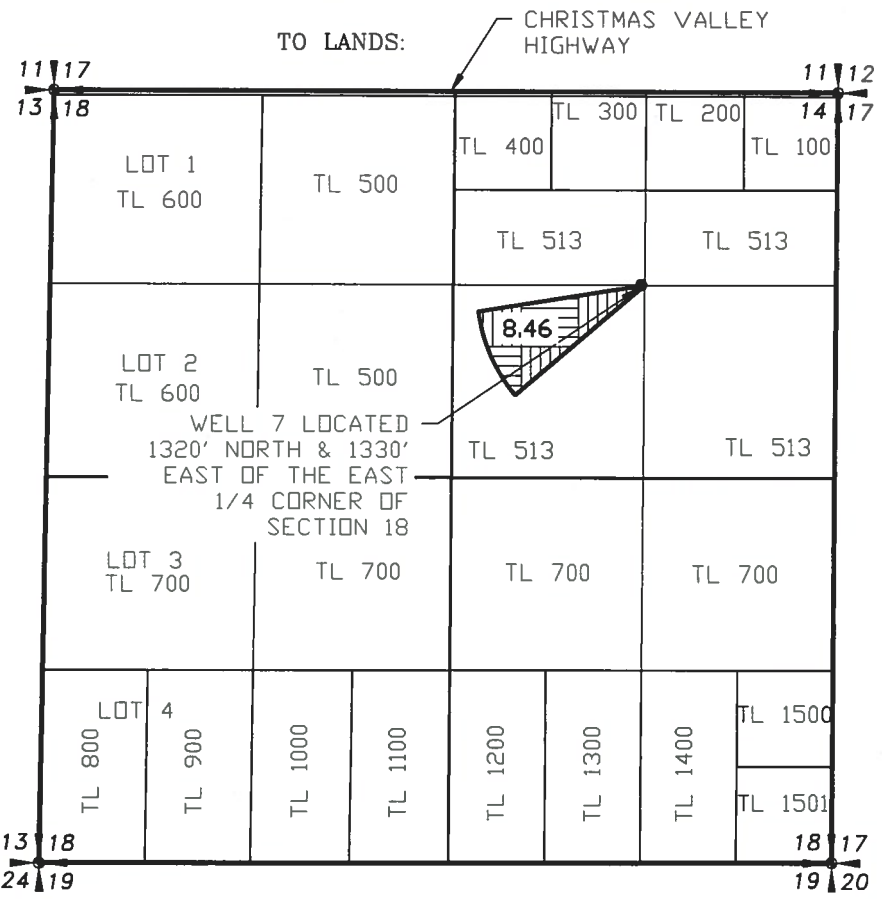
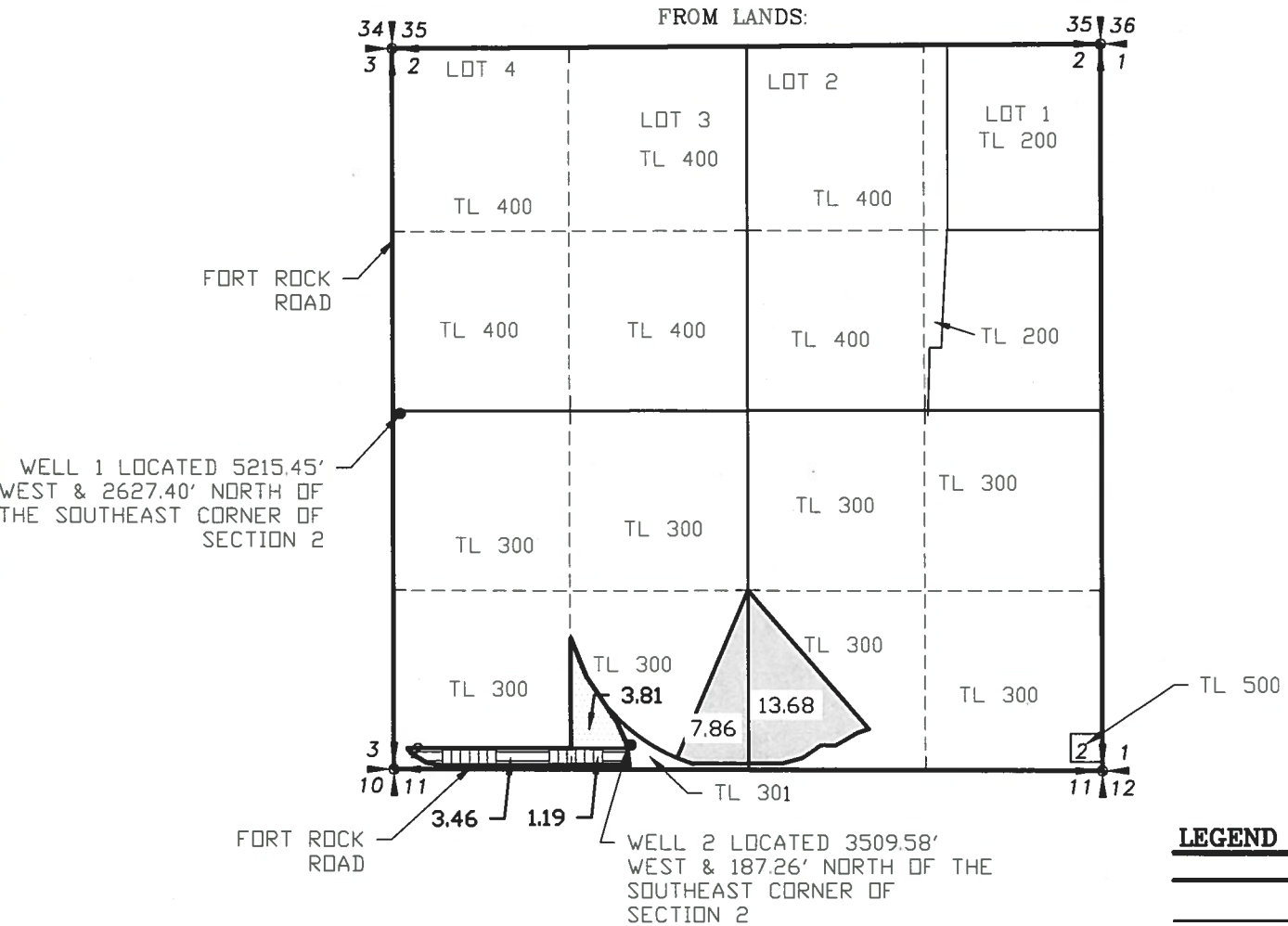
MAP TO ACCOMPANY
 TRANSFER APPLICATION
 CERTIFICATE 94362

DATE:	04/15/20
SCALE:	1"=1320'
DWG. BY:	R.C.
JOB:	2019-083
FILE:	2019-083
SHEET:	1 OF 1

CERTIFICATE 94361

SECTION 2, TOWNSHIP 27 SOUTH,
RANGE 15 EAST, W.M.

SECTION 18, TOWNSHIP 27 SOUTH,
RANGE 16 EAST, W.M.



LEGEND

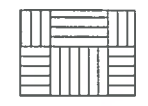
— SECTION LINE

— 1/4 SECTION LINE

- - - - 1/16 SECTION LINE

NEW LOCATION:

Certificate	94361	Priority	1/17/1955
Township	Range	Mer	Sec
27 S	16 E	WM	18 SW SE
			GLot Well# Acres cfs
			7 8.46 0.11
Total Acres this Certificate			8.46 0.11



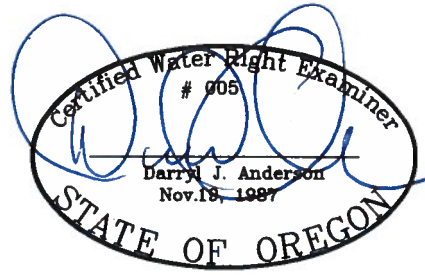
TO TRANSFER:

Certificate	94361	Priority	1/17/1955
Township	Range	Mer	Sec
27 S	15 E	WM	2 SW SW
27 S	15 E	WM	2 SE SW
27 S	15 E	WM	2 SE SW
Total Acres this Certificate			8.46 0.11



TO REMAIN:

Certificate	94361	Priority	1/17/1955
Township	Range	Mer	Sec
27 S	15 E	WM	2 SE SW
27 S	15 E	WM	2 SW SE
Total Acres this Certificate			21.54 0.27



RENEWAL 12/31/21

RECEIVED
MAY 26 2020
OWRD

NOTE:
PREPARATION OF THIS MAP IS FOR IDENTIFYING WATER RIGHTS ONLY. IT HAS NO INTENT TO PROVIDE LOCATIONS OR DIMENSIONS OF PROPERTY BOUNDARIES.

REVISION	BY

ANDERSON ENGINEERING AND SURVEYING, INC.
P.O. BOX 28
LAKEVIEW, OREGON 97630
(541) 947-4407
FAX: 947-2321

FOR: DANIEL & LEANNE MILES
81341 BUICK LANE
SILVER LAKE, OR 97638

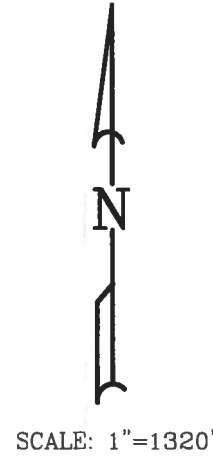
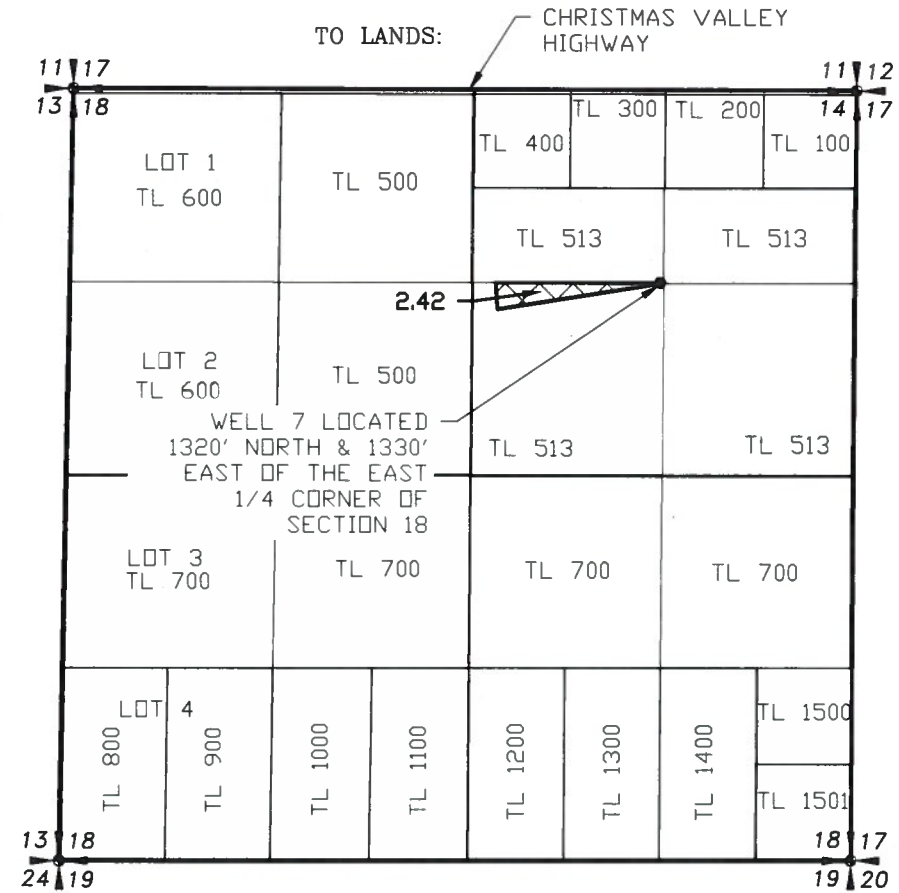
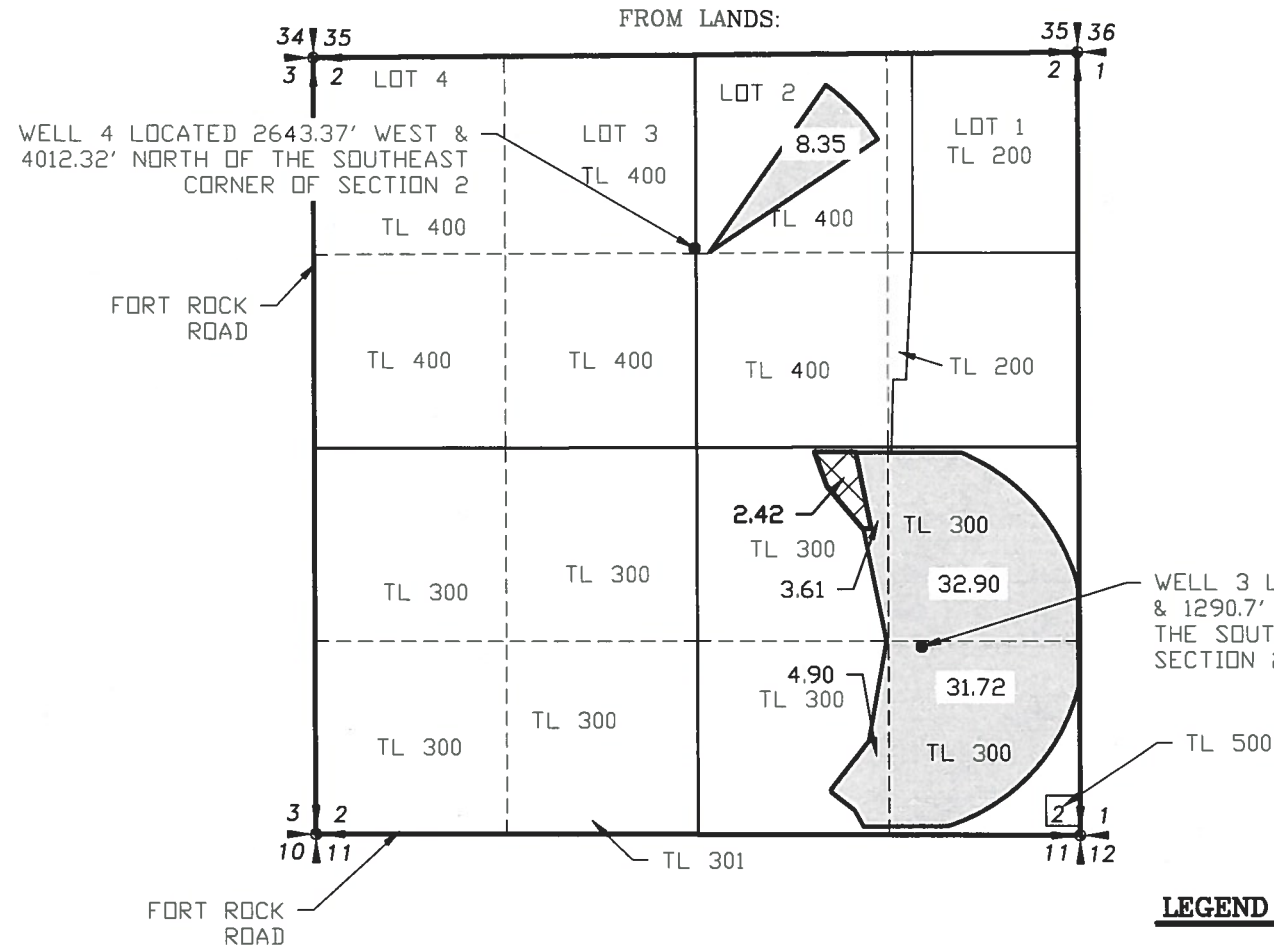
MAP TO ACCOMPANY
TRANSFER APPLICATION
CERTIFICATE 94361

DATE:	04/15/20
SCALE:	1"=1320'
DWG. BY:	R.C.
JOB:	2019-083
FILE:	2019-083
SHEET:	1 OF 1

CERTIFICATE 94357

SECTION 2, TOWNSHIP 27 SOUTH,
RANGE 15 EAST, W.M.

SECTION 18, TOWNSHIP 27 SOUTH,
RANGE 16 EAST, W.M.



- LEGEND**
- SECTION LINE
 - 1/4 SECTION LINE
 - - - - 1/16 SECTION LINE

NEW LOCATION:

Certificate	94357	Priority	1/5/1950					
Township	Range	Mer	Sec	Q-Q	GLot	Well #	Acres	cfs
27 S	16 E	WM	18	SW NE		7	2.42	0.03
27 S	16 E	WM	18	SE NE		7	0	0.00
Total Acres this Certificate							2.42	0.030



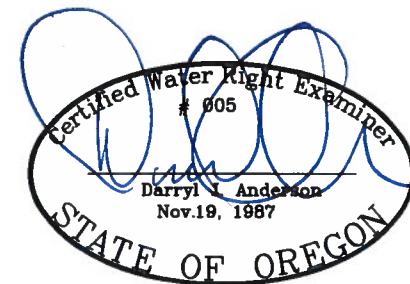
TO TRANSFER:

Certificate	94357	Priority	1/5/1950					
Township	Range	Mer	Sec	Q-Q	GLot	Well #	Acres	cfs
27 S	15 E	WM	2	NW SE		3	2.42	0.030
Total Acres this Certificate							2.42	0.030



TO REMAIN:

Certificate	94357	Priority	1/5/1950					
Township	Range	Mer	Sec	Q-Q	GLot	Well #	Acres	cfs
27 S	15 E	WM	2	NW NE		4	8.35	0.104
27 S	15 E	WM	2	NE SE		3	32.9	0.411
27 S	15 E	WM	2	NW SE		3	3.61	0.045
27 S	15 E	WM	2	SW SE		3	4.9	0.061
27 S	15 E	WM	2	SE SE		3	31.72	0.397
Total Acres this Certificate							81.48	1.019



RENEWAL 12/31/21

RECEIVED

MAY 26 2020

OWRD

NOTE:
PREPARATION OF THIS MAP IS FOR IDENTIFYING WATER RIGHTS ONLY. IT HAS NO INTENT TO PROVIDE LOCATIONS OR DIMENSIONS OF PROPERTY BOUNDARIES.

REVISION	BY

ANDERSON ENGINEERING AND SURVEYING, INC.
P.O. BOX 28
LAKEVIEW, OREGON 97630
(541) 947-4407
FAX: 947-2321

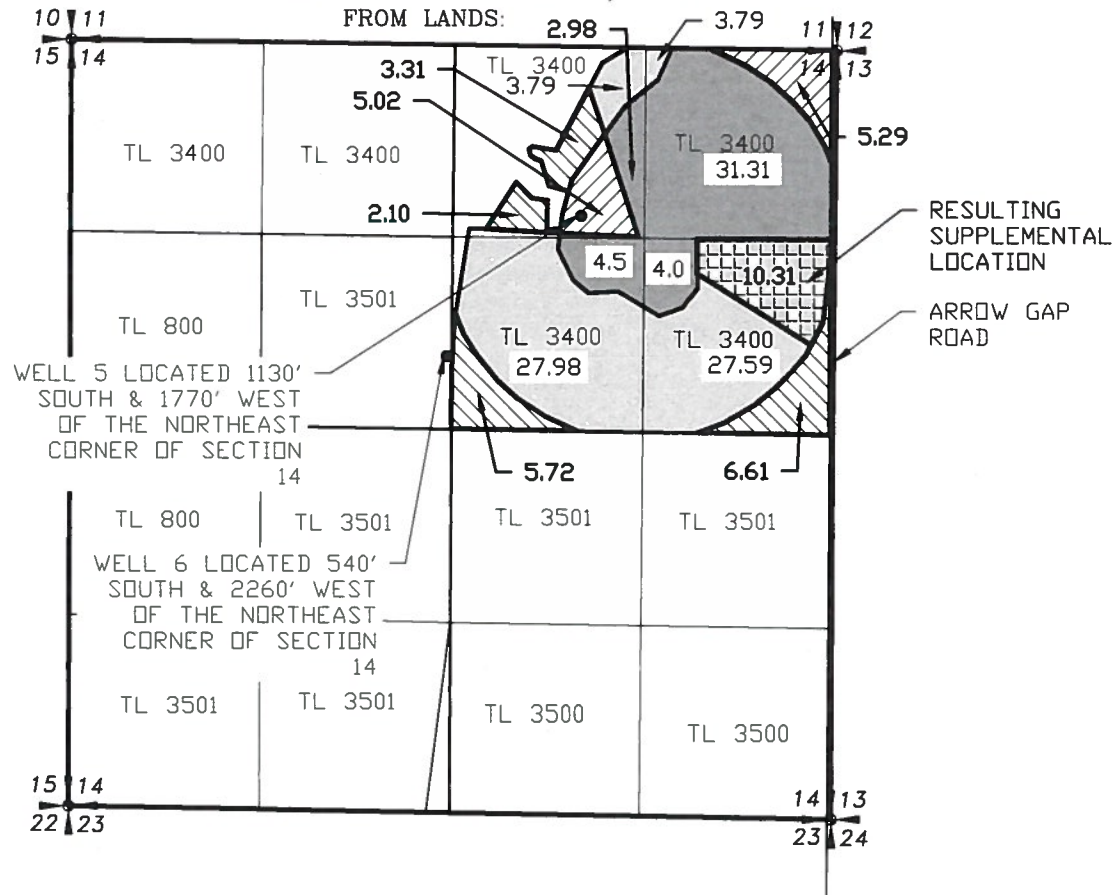
FOR: DANIEL & LEANNE MILES
81341 BUICK LANE
SILVER LAKE, OR 97638

MAP TO ACCOMPANY
TRANSFER APPLICATION
CERTIFICATE 94357

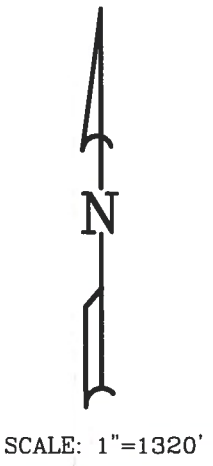
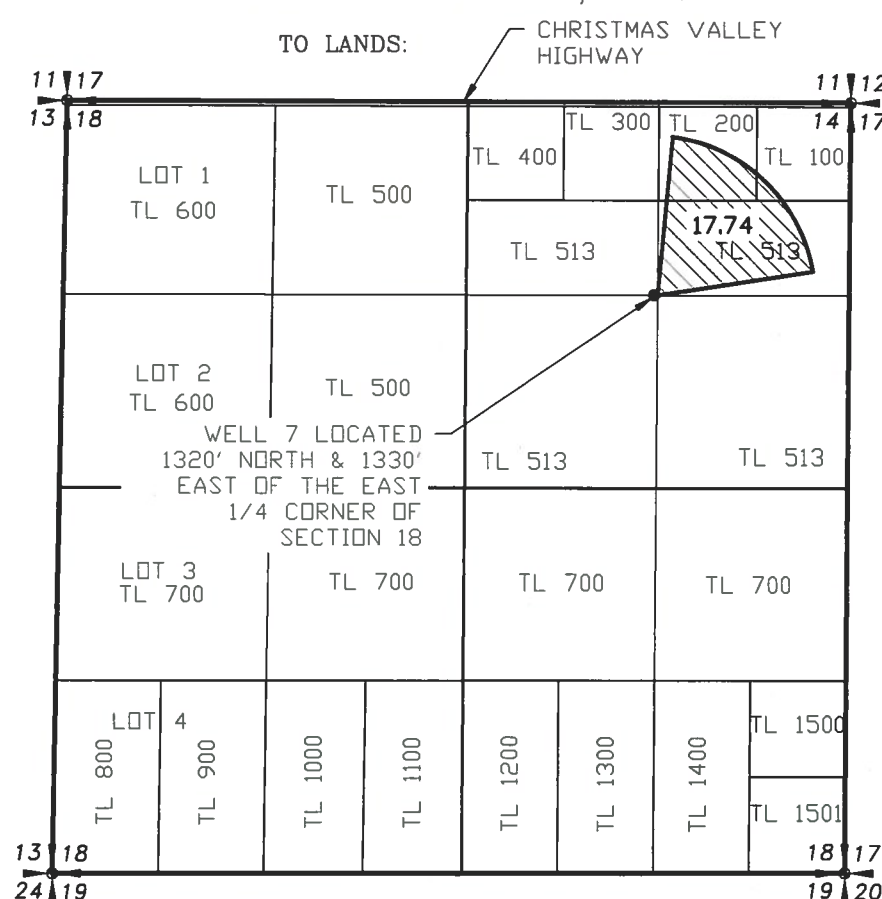
DATE:	04/15/20
SCALE:	1"=1320'
DWG. BY:	R.C.
JOB:	2019-083
FILE:	2019-083
SHEET:	1 OF 1

CERTIFICATE 48606

SECTION 14, TOWNSHIP 27 SOUTH,
RANGE 15 EAST, W.M.



SECTION 18, TOWNSHIP 27 SOUTH,
RANGE 16 EAST, W.M.



LEGEND
 — SECTION LINE
 — 1/4 SECTION LINE
 - - - 1/16 SECTION LINE

TO TRANSFER:

Certificate	48606	Priority		8/9/1976							
		Range	Mer	Sec	Q-Q	GLot	Well #	Primary Acres	Supplemental Acres	Primary cfs	Supplemental cfs
27 S	15 E	WM	14	NE NE		6	0	5.29	0.00	0.07	
27 S	15 E	WM	14	NW NE		6	3.41	5.02	0.07	0.06	
27 S	15 E	WM	14	SW NE		6	5.72	0	0.07	0.00	
27 S	15 E	WM	14	SE NE		6	6.61	0	0.08	0.00	
Total Acres this Certificate							17.74	10.31	0.22	0.13	
											0.35



TO REMAIN:

Certificate	48606	Priority		8/9/1976							
		Range	Mer	Sec	Q-Q	GLot	Well #	Primary Acres	Supplemental Acres	Primary cfs	Supplemental cfs
27 S	15 E	WM	14	NE NE		6	0.9	31.31	0.01	0.39	
27 S	15 E	WM	14	NW NE		6	3.79	2.98	0.05	0.04	
27 S	15 E	WM	14	SW NE		6	27.98	4.5	0.35	0.06	
27 S	15 E	WM	14	SE NE		6	27.59	4	0.34	0.05	
Total Acres this Certificate							60.26	42.79	0.75	0.53	
											1.29



NEW LOCATION:

Certificate	48606	Priority		8/9/1976						
		Range	Mer	Sec	Q-Q	GLot	Well #	Primary Acres	Primary cfs	
27 S	16 E	WM	18	NE NE		7	17.74	0.22		
Total Acres this Certificate							17.74	0.22		



Certificate	48606	Priority		8/9/1976						
		Range	Mer	Sec	Q-Q	GLot	Well #	Supplemental Acres	Supplemental cfs	
27 S	15 E	WM	14	SE NE		6	10.31	0.13		
Total Acres this Certificate							10.31	0.13		



RECEIVED
 MAY 26 2020
OWRD

NOTE: PREPARATION OF THIS MAP IS FOR IDENTIFYING WATER RIGHTS ONLY. IT HAS NO INTENT TO PROVIDE LOCATIONS OR DIMENSIONS OF PROPERTY BOUNDARIES.

REVISION	BY

ANDERSON ENGINEERING AND SURVEYING, INC.
 P.O. BOX 28
 LAKEVIEW, OREGON 97630
 (541) 947-4407
 FAX: 947-2321

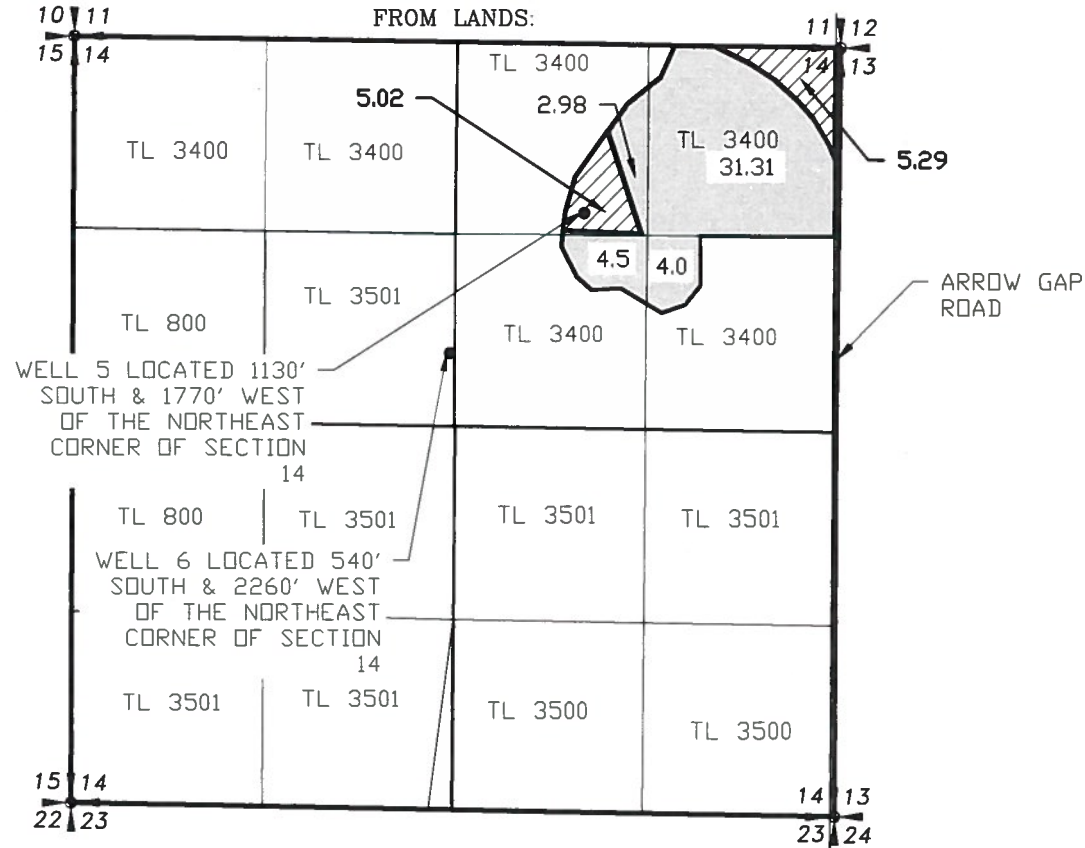
FOR: DANIEL & LEANNE MILES
 81341 BUICK LANE
 SILVER LAKE, OR 97638

MAP TO ACCOMPANY
 TRANSFER APPLICATION
 CERTIFICATE 48606

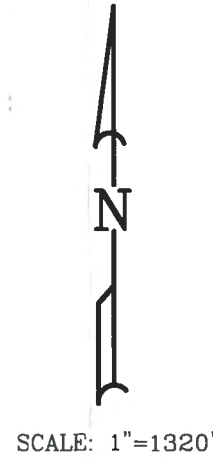
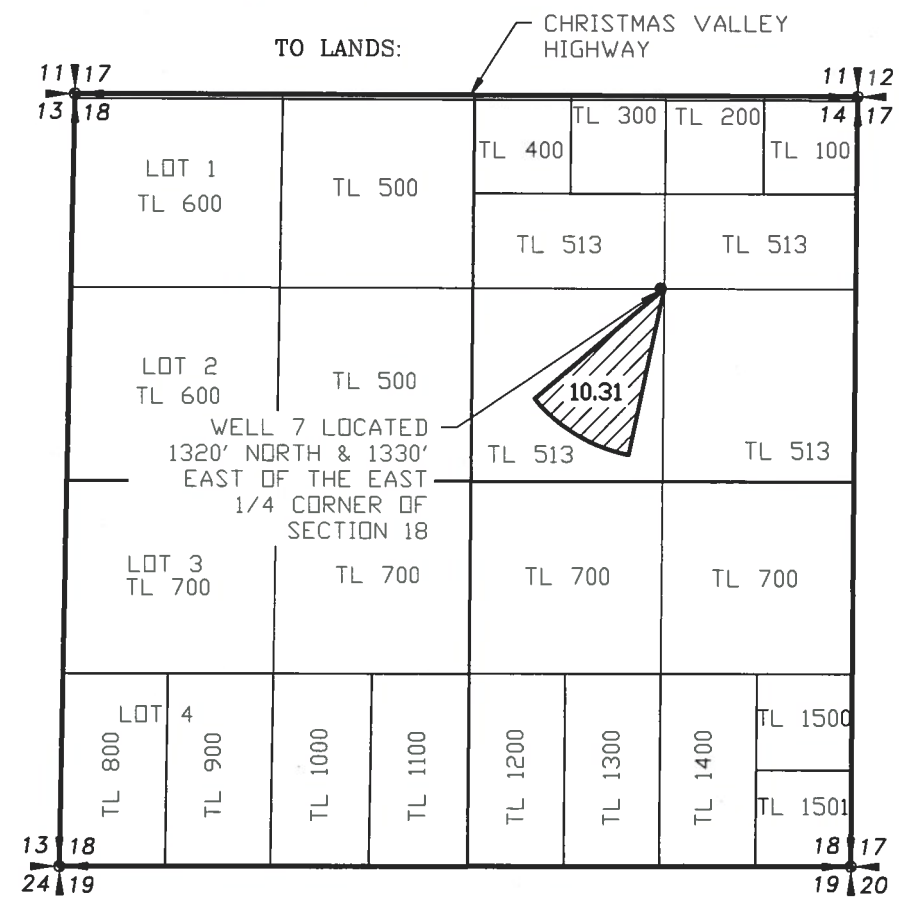
DATE:	04/15/20
SCALE:	1"=1320'
DWG. BY:	R.C.
JOB:	2019-083
FILE:	2019-083
SHEET:	1 OF 1

CERTIFICATE 35750

SECTION 14, TOWNSHIP 27 SOUTH,
RANGE 15 EAST, W.M.



SECTION 18, TOWNSHIP 27 SOUTH,
RANGE 16 EAST, W.M.



- LEGEND**
- SECTION LINE
 - 1/4 SECTION LINE
 - - - - 1/16 SECTION LINE

TO TRANSFER:

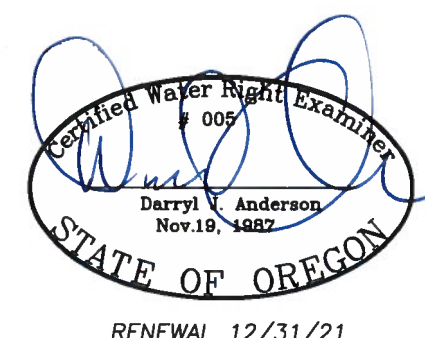
Certificate	35750	Priority	11/6/1958						
Township	Range	Mer	Sec	Q-Q	GLat	Well #	Acres	cf	
27 S	15 E	WM	14	NE NE		5	5.29	0.07	
27 S	15 E	WM	14	NW NE		5	5.02	0.06	
Total Acres this Certificate							10.31	0.13	

TO REMAIN:

Certificate	35750	Priority	11/6/1958						
Township	Range	Mer	Sec	Q-Q	GLat	Well #	Acres	cf	
27 S	15 E	WM	14	NE NE		5	31.31	0.39	
27 S	15 E	WM	14	NW NE		5	2.98	0.04	
27 S	15 E	WM	14	SW NE		5	4.5	0.06	
27 S	15 E	WM	14	SE NE		5	4.0	0.03	
Total Acres this Certificate							42.79	0.53	

NEW LOCATION:

Certificate	35750	Priority	11/6/1958						
Township	Range	Mer	Sec	Q-Q	GLat	Well #	Acres	cf	
27 S	16 E	WM	18	SW NE		7	10.31	0.13	
Total Acres this Certificate							10.31	0.13	



RECEIVED
MAY 26 2020
OWRD

NOTE:
PREPARATION OF THIS MAP IS FOR IDENTIFYING WATER RIGHTS ONLY. IT HAS NO INTENT TO PROVIDE LOCATIONS OR DIMENSIONS OF PROPERTY BOUNDARIES.

REVISION	BY

ANDERSON ENGINEERING AND SURVEYING, INC.
P.O. BOX 28
LAKEVIEW, OREGON 97630
(541) 947-4407
FAX: 947-2321

FOR: DANIEL & LEANNE MILES
81341 BUICK LANE
SILVER LAKE, OR 97638

MAP TO ACCOMPANY
TRANSFER APPLICATION
CERTIFICATE 35750

DATE:	04/15/20
SCALE:	1"=1320'
DWG. BY:	R.C.
JOB:	2019-083
FILE:	2019-083
SHEET:	1 OF 1